

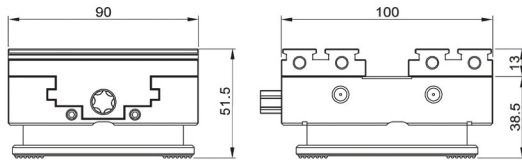
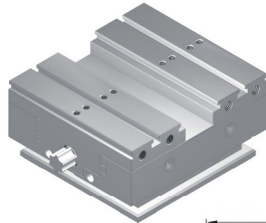
# PQV 自定心虎鉗 Self-Centering Vice

PQV100W

M Stainless steel  
H HRC50°~52°

## 特點

- ▶ 鉗口快速更換方向，旋轉180°增大夾持範圍。
- ▶ 根據夾持大小選用兩種鉗口，中間有防塵片防護。
- ▶ 鉗口重複夾持精度0.005mm。
- ▶ 可接並列虎鉗基座，EROWA,SYSTEM-3R系統。

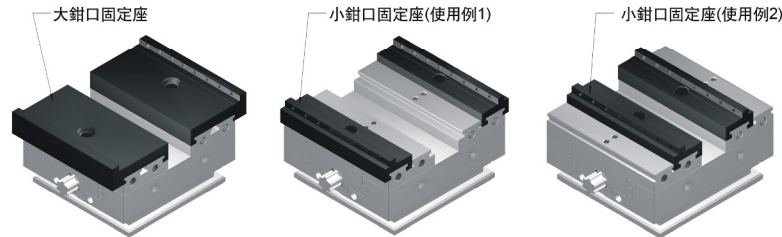


## Features

- ▶ Quickly change the direction of the jaws and rotate 180° to increase the clamping range.
- ▶ Dust protective cover is included.
- ▶ Clamping repeating accuracy within 0.005mm.
- ▶ Compatible with EROWA & System-3R

可安裝不同鉗口使用(標配大小鉗口各一組)

A02 (Standard large and small jaw sets provided)



訂購編號 Order No.	型號 Model	描述 Description	重量 N.W.
64850-100W	PQV100W	可接並列虎鉗基座，EROWA,SYSTEM-3R系統。	3.0kg

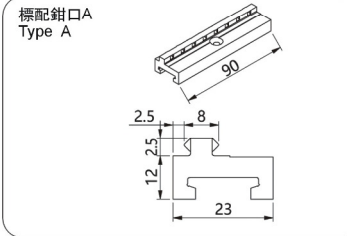
A01

# PQV 自定心虎鉗 Self-Centering Vice

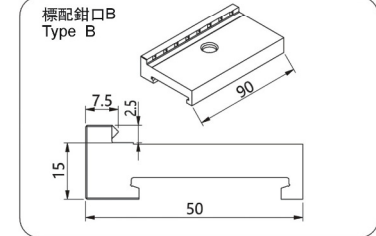
PQV100W / PQV100WA通用夾爪(鉗口)

Standard Jaw sets

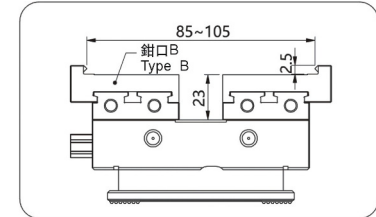
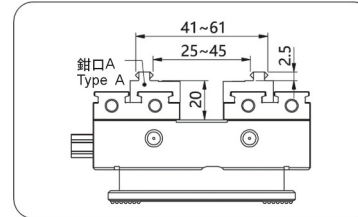
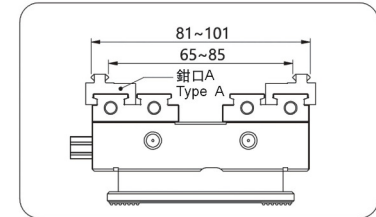
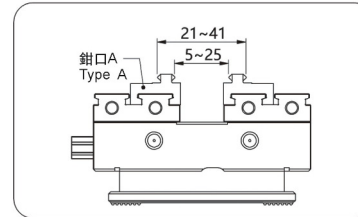
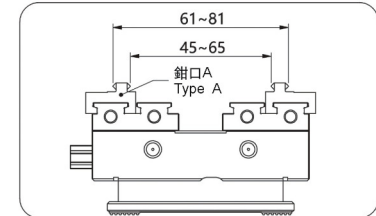
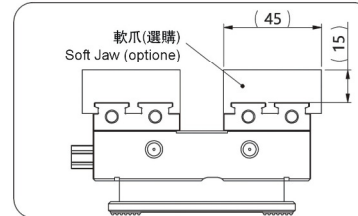
M SKD61 S QPQ HV950°



M SKD61 S QPQ HV950°



夾持範圍示意Clamping demo



A02

# PQV 自定心虎鉗 Self-Centering Vise

## PQV100W

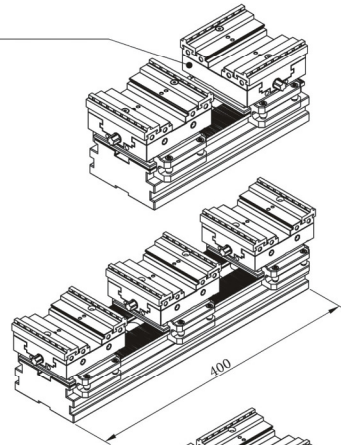
### 多種型式使用 Versatility Application

底部90°雙向齒排結構  
可旋轉方向安裝於  
並列式虎鉗基座

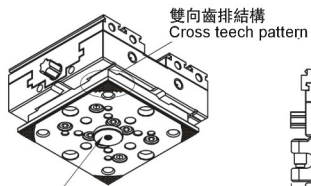
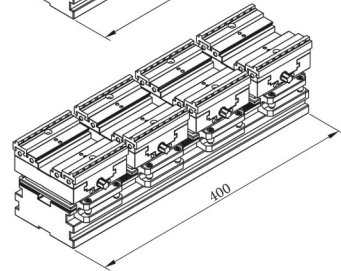


Cross teeth pattern at the bottom  
which compatible with MKS system  
base on two directions.

400mm基座  
橫向夾持可擺放3台  
3 vises could be mouted on a 400mm  
base.

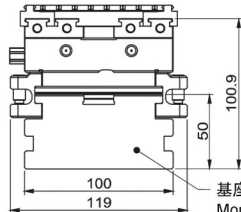


400mm基座  
直向夾持可擺放4台  
Cross teeth pattern at the bottom  
4 vises could be mouted on a 400mm  
base.



雙向齒排結構  
Cross teech pattern

可選購  
安裝於並列式虎鉗基座用的定位柱  
Optional centering stub for MKS base

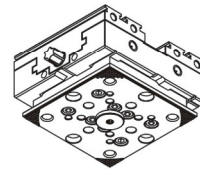


參照 **C17**  
並搭配K型夾持塊×2件  
即可安裝於並列虎鉗基座

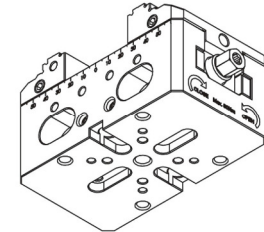
參照 **C13~C15**  
More info on MKS base length refer to

# PQV 自定心虎鉗 Self-Centering Vise

## 通用配件 Accessories

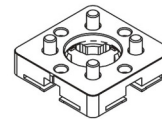


PQV100W

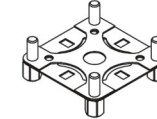


PQV204V / PQV305V / PQV407V  
(PQV204V 無法使用ER-011599-1)

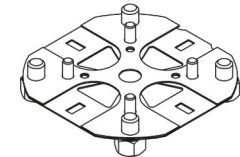
可選購零件Optional accessories:  
EROWA: ER-011599或ER-009214定位片Centering plate  
SYSTEM-3R: 3R-651.7-P微托盤Macro pallet



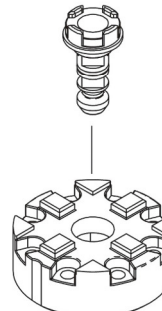
3R-651.7-P



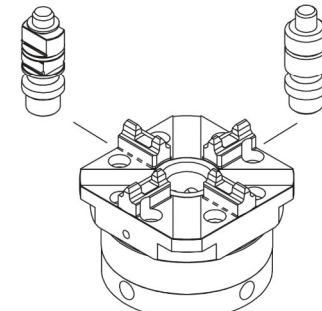
ER-009214-1



ER-011599-1



SYSTEM-3R



EROWA

# PQV 自定心虎鉗 Self-Centering Vise

PQV204VE / 305VE / 407VE

## 特點

- 鉗口快速更換方向，旋轉180°增大夾持範圍。
- 夾爪鉗口和帶動螺母設有角固式結合，能減少夾持上浮量。
- 鉗口重複夾持精度0.005mm。
- 單邊夾持端的鉗口，可隨毛胚工件的不平行而擺動，增加毛胚素材夾緊力。
- 標配EROWA定位板(不含拉桿)。

## Features

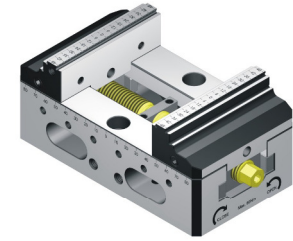
- Quickly change the direction of the jaws and rotate 180° to increase the clamping range.
- Angle lock mechanism between clamping jaws and driven nut reducing lifting while clamping.
- Clamping repeating accuracy within 0.005mm.
- Special swing 1.5° design on one side clamping jaw for better gripping when workpiece is non-parallel.
- Standard with EROWA centering plate. (Spigot not included)



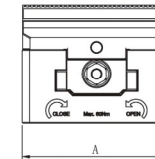
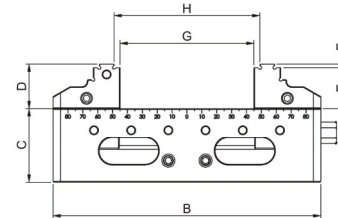
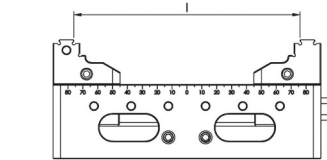
訂購編號 / Order No.	64850-204VE	64850-305VE	64850-407VE
型號 / Model	PQV204VE	PQV305VE	PQV407VE
本體長度 / Body length	mm 105	130	180
夾持範圍 / Clamping range	mm 0~77	0~102	0~152
鉗口寬度 / Jaw width	mm 54	75	100
鉗口材質 & 硬度 /  &  Jaw	SCM440 HRC53°~55°		
主體材質 & 硬度 /  &  Body	不銹鋼INOX HRC50°~52°	SKS3 HRC50°	SKS3 HRC50°
擰緊力矩 / Tightening torque	Nm 60	70	80
夾緊力 / Clamping force	kN 12	14	16
中心定位精度 / Centring accuracy	mm 0.005		
重量 / Weight	kg 2.3	3.8	6.8

# PQV 自定心虎鉗 Self-Centering Vise

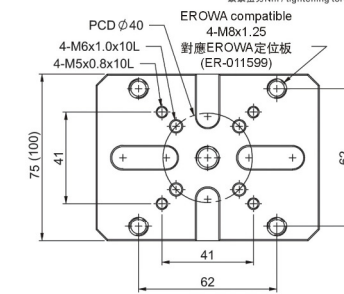
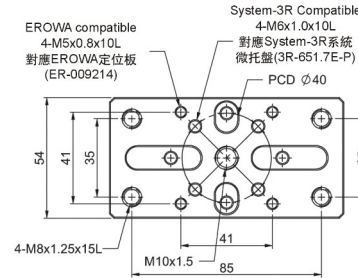
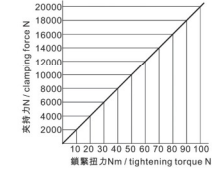
PQV204V / 305V / 407V



型號 Model	可連接EROWA及SYSTEM-3R系統 Compatible with
PQV204V	ER-009214 / 3R-651.7-P
PQV305V	ER-009214 / ER-011599 / 3R-651.7-P
PQV407V	ER-009214 / ER-011599 / 3R-651.7-P



夾持曲線圖  
(CLAMPING CURVE)



主體Body & 鉗口Jaws A05

Unit:mm

訂購編號 Order No.	型號 Model	A	B	C	D	E	F	G	H	I	重量 N.W.
64850-204V	PQV204V	54	105	50	20	18	2	0~35	8~43	42~77	2.3kg
64850-305V	PQV305V	75	130	50	21.5	19.5	2	0~50	8~58	52~102	3.8kg
64850-407V	PQV407V	100	180	50	30	27.5	2.5	0~90	8~98	62~152	6.8g

1.適用於四軸、五軸、CNC分度盤、立臥式銑床。夾持工作物使之精密加工。

2.虎鉗中心定位精度保持0.005mm。

3.虎鉗本體材質使用合金鋼，可保持高耐磨性。

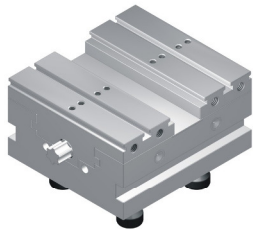
# PQV 自定心虎鉗 Self-Centering Vise

PQV100WA

Alloy Tool Steel 合金工具鋼  
HRC50°~52°

## 特點

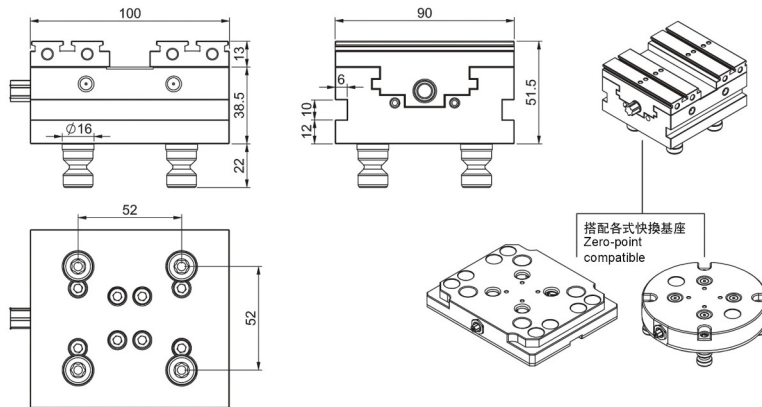
- 鉗口快速更換方向，旋轉180°增大夾持範圍。
- 根據夾持大小選用兩種鉗口，中間有防塵片防護。
- 鉗口重複夾持精度0.005mm。
- 可搭配52零點定位快換基座。



注：標配如P.A02頁所示大小鉗口各一組  
Note: Standard two jaw sets are included (A02)

## Features

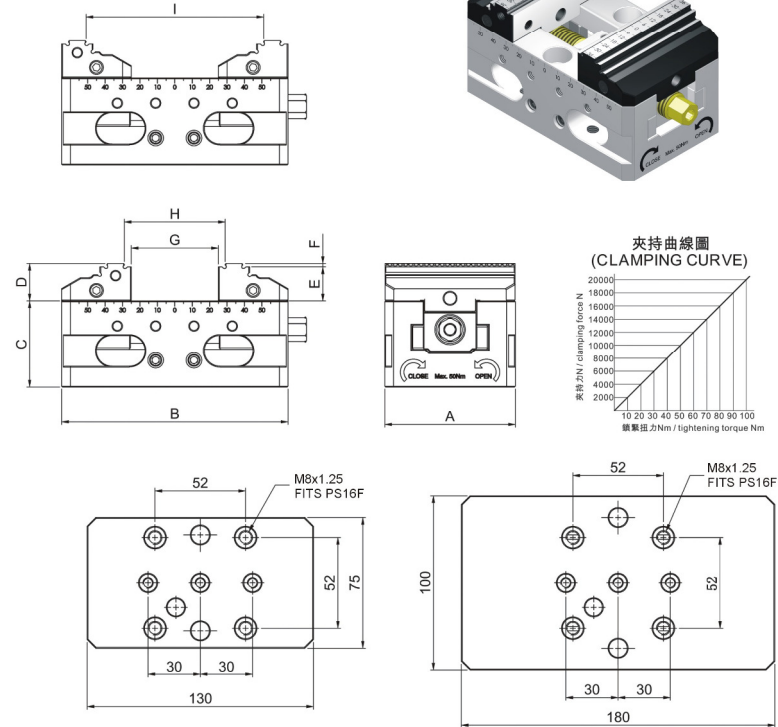
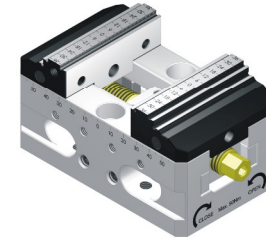
- Quickly change the direction of the jaws and rotate 180° to increase the clamping range.
- Dust protective cover is included.
- Clamping repeating accuracy within 0.005mm.
- Compatible with zero-point 52mm



訂購編號 Order No.	型號 Model	描述 Description	重量 N.W.
64850-100WA	PQV100WA	可接零點定位快換系統 Zero-point point compatible	3.0kg

# PQV 自定心虎鉗 Self-Centering Vise

PQV305 / 407



主體 M SKS3 鉗口 M SCM440  
Body H HRC50° Jaws H HRC53°~55°

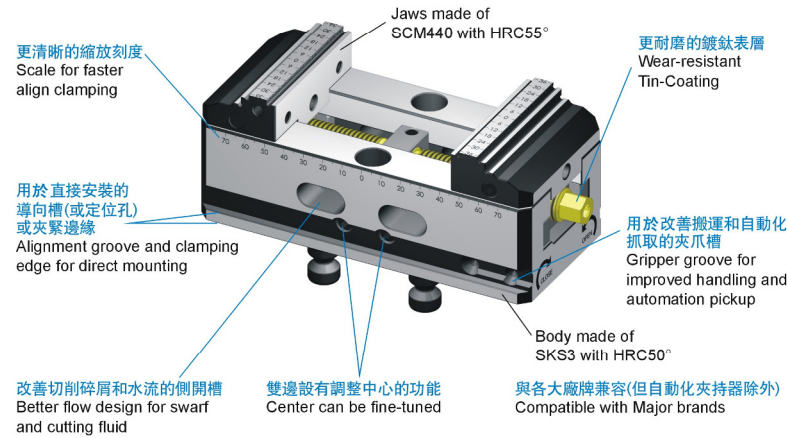
訂購編號 Order No.	型號 Model	A	B	C	D	E	F	G	H	I	重量 N.W.
64850-305	PQV305	75	130	50	21.5	19.5	2	0~50	8~58	52~102	3.8kg
64850-407	PQV407	100	180	50	30	27.5	2.5	0~90	8~98	62~152	6.8g

- 適用於四軸、五軸、CNC分度盤、立臥式銑床。夾持工作物使之精密加工。
- 虎鉗中心定位精度保持0.005mm。
- 虎鉗本體材質使用合金鋼，可保持高耐磨性。

PQV

## 五軸自定心虎鉗 5-Axis Self-Centering Vise

### 全系列優化 Optimisation in innovation



#### 技術簡單，應用靈活

虎鉗的設計實用，可提供廣泛的應用，無論是立式三軸、第四軸或臥式及五軸加工機都有正確的解決方案。

在我們更新設計，優化使用上的方便性，以提供客戶使用上的簡易性。開發中零點定位螺柱採用96和52安裝，保持著和世界各國大廠牌兼容。並增加了四大特點：

1. 無螺絲快換式鉗口可在幾秒內180°反爪裝夾使夾持尺寸變大。
2. 單邊鉗口搖擺1.5°的專利設計，可隨著毛料工件不平行擺動貼合夾持，使夾持更穩定。
3. 提供了專利設計中心微調功能，可快速調整中心的位移。
4. 鉗口與帶動螺母使用角固式結構，可防止被夾持工件的上浮量。

#### SIMPLICITY AND FLEXIBILITY

PQV 5-axis centering vise is designed to be practical and can be utilised for a wide range of applications; 3-axis Vertical, 4-axis horizontal and 5-axis machining center all have the right solution.

In our updated design, optimization on the ease of use, with simplicity and flexibility. Compatible with 52 & 96 system on major brands. Features are added below:

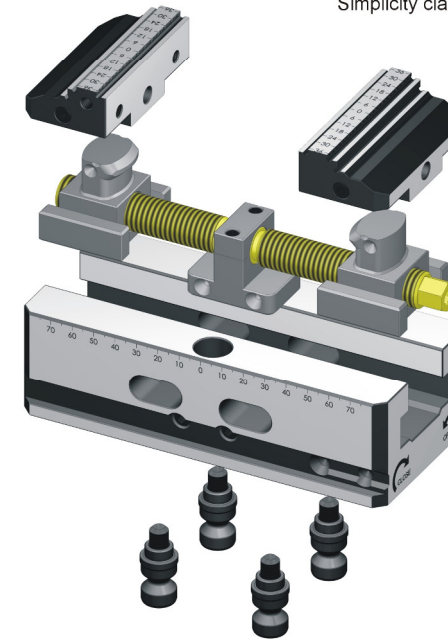
1. The screwless clamping jaws can be assembly 180° over in seconds for larger clamping range.
2. Patented swing 1.5° design on one side clamping jaw for better gripping when workpiece is non-parallel.
3. Patented fine-tuning center mechanism, easy to adjustify.
4. Special angle lock mechanism, preventing workpiece lifting when locked.

PQV

## 五軸自定心虎鉗 5-Axis Self-Centering Vise

#### 極簡易的夾持組裝

Simplicity clamping assembly



#### 功能特點

簡單而又巧妙。基本上由8個單個零件組成，設計簡化為基本。形狀功能決定，以在實踐中產生最大效益。重點是可適用性，操作和靈活性。

虎鉗可用於各種夾緊任務，除了毛胚夾緊外還可與各種附件選項一起使用。

#### FUNCTIONAL CHARACTERISTICS

Simple and clever. Basically composed of 8 individual parts, the design is simplified to basic. Shape is determined by function to produce maximum benefit in practice. The emphasis is on serviceability, operation and flexibility.

The vise can be used for a variety of clamping tasks, in addition to blank clamping, and with a variety of accessory options.

# PQV 五軸自定心虎鉗 5-Axis Self-Centering Vise

PQV77-54

鉗口寬度54mm

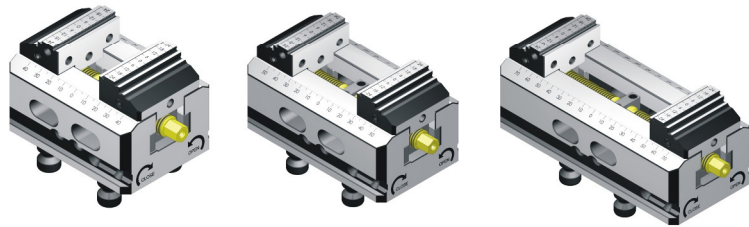
Jaw width 54mm

### 特點

- 鉗口快速更換方向，旋轉180°增大夾持範圍。
- 夾爪鉗口和帶動螺母設有角固式接合，能減少夾持上浮量。
- 鉗口重複夾持精度0.005mm。
- 單邊夾持端的鉗口，可隨毛胚工件的不平行而擺動，增加毛胚素材夾緊力。

### Features

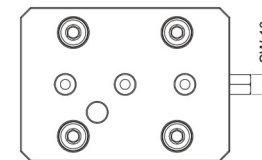
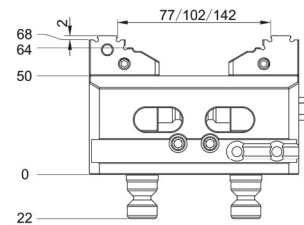
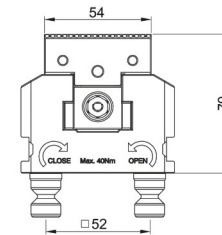
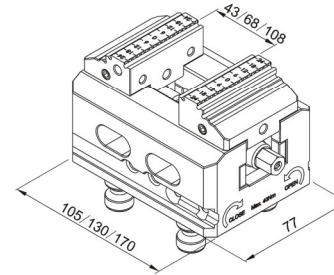
- Quickly change the direction of the jaws and rotate 180° to increase the clamping range.
- Special angle lock mechanism, preventing workpiece lifting when locked.
- Clamping repeating accuracy within 0.005mm.
- Special swing 1.5° design on one side clamping jaw for better gripping when workpiece is non-parallel.



訂購編號 / Order No.	64880-54	64881-54	64882-54
型號 / Model	PQV354105	PQV354130	PQV354170
本體長度 / Body length	mm 105	130	170
夾持範圍 / Clamping range	mm 0~77	0~102	0~142
鉗口寬度 / Jaw width	mm	54	
零點系統 / Zero-point system		52	
零點螺栓 / Zero-point bolt		16	
擰緊力矩 / Tightening torque	Nm	60	
夾緊力 / Clamping force	kN	12	
中心定位精度 / Centring accuracy	mm	0.005	
重量 / Weight	kg	3.0	3.7
			4.6

# PQV 五軸自定心虎鉗 5-Axis Self-Centering Vise

PQV77-54



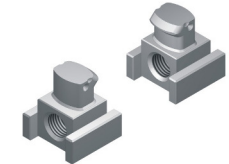
● 左右鉗口  
Jaw set



訂購編號 Order No. 64800-J54

鉗口寬度 / Jaw width	mm 54
適用於 / Compatible	PQV354105 / 130 / 170

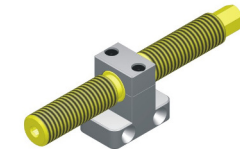
● 左右螺母  
Nut set



訂購編號 Order No. 64800-N14

螺母尺寸 / Screw Nut	mm M14
適用於 / Compatible	PQV354105 / 130 / 170

● 螺桿組件  
Screw set



訂購編號 Order No. 64800-S14-105 / 130 / 170

螺桿尺寸 / Screw size	mm M14x115 / 140 / 180
適用於 / Compatible	PQV354105 / 130 / 170

● 零點螺栓  
Zero-point bolt set



訂購編號 Order No. 64942-16

螺栓尺寸 / Bolt size	mm 16
適用於 / Compatible	PQV354105 / 130 / 170

# PQV 五軸自定心虎鉗 5-Axis Self-Centering Vice

## PQV77-75

鉗口寬度75mm

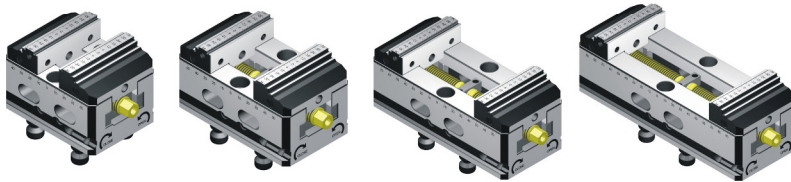
Jaw width 75mm

### 特點

- ▶ 鉗口快速更換方向，旋轉180°增大夾持範圍。
- ▶ 夾爪鉗口和帶動螺母有角固式接合，能減少夾持上浮量。
- ▶ 鉗口重複夾持精度0.005mm。
- ▶ 單邊夾持端的鉗口，可隨毛胚工件的不平行而擺動，增加毛胚素材夾緊力。

### Features

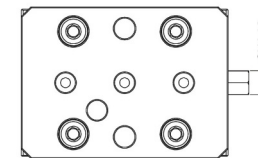
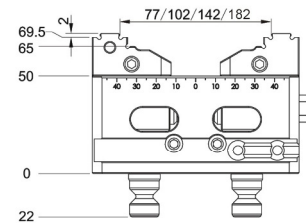
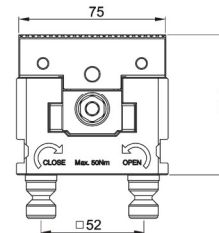
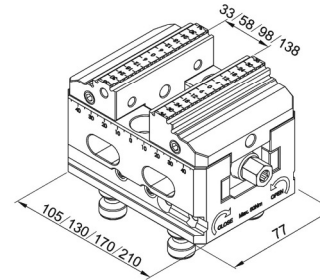
- ▶ Quickly change the direction of the jaws and rotate 180° to increase the clamping range.
- ▶ Special angle lock mechanism, preventing workpiece lifting when locked.
- ▶ Clamping repeating accuracy within 0.005mm.
- ▶ Special swing 1.5° design on one side clamping jaw for better gripping when workpiece is non-parallel.



訂購編號 / Order No.	64883-75	64884-75	64885-75	64886-75	
型號 / Model	PQV375105	PQV375130	PQV375170	PQV375210	
本體長度 / Body length	mm	105	130	170	210
夾持範圍 / Clamping range	mm	0-77	0-102	0-142	0-182
鉗口寬度 / Jaw width	mm	75			
零點系統 / Zero-point system	52				
零點螺栓 / Zero-point bolt	16				
擰緊力矩 / Tightening torque	Nm	70			
夾緊力 / Clamping force	kN	14			
中心定位精度 / Centring accuracy	mm	0.005			
重量 / Weight	kg	3.3	3.9	4.8	5.7

# PQV 五軸自定心虎鉗 5-Axis Self-Centering Vice

## PQV77-75



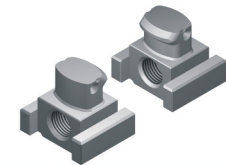
### ● 左右鉗口 Jaw set



訂購編號 Order No. 64800-J75

鉗口寬度 / Jaw width	mm	75
適用於 / Compatible	PQV375105 / 130 / 170 / 210	

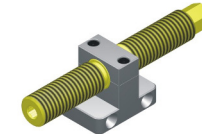
### ● 左右螺母 Nut set



訂購編號 Order No. 64800-N16

螺母尺寸 / Screw Nut	mm	M16
適用於 / Compatible	PQV375105 / 130 / 170 / 210	

### ● 螺桿組件 Screw set



訂購編號 Order No. 64800-S16-105/130/170/210

螺桿尺寸 / Screw size	mm	M16x115 / 140 / 180 / 220
適用於 / Compatible	PQV375105 / 130 / 170 / 210	

### ● 零點螺栓 Zero-point bolt set



訂購編號 Order No. 64942-16

螺栓尺寸 / Bolt size	mm	16
適用於 / Compatible	PQV375105 / 130 / 170 / 210	

# PQV 五軸自定心虎鉗 5-Axis Self-Centering Vise

## PQV125-75

鉗口寬度75mm

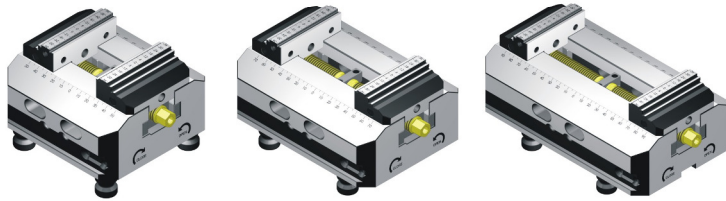
Jaw width 75mm

### 特點

- ▶ 鉗口快速更換方向，旋轉180°增大夾持範圍。
- ▶ 夾爪鉗口和帶動螺母設有角固式接合，能減少夾持上浮量。
- ▶ 鉗口重複夾持精度0.005mm。
- ▶ 單邊夾持端的鉗口，可隨毛胚工件的不平行而擺動，增加毛胚素材夾緊力。

### Features

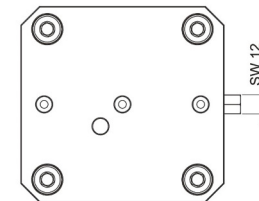
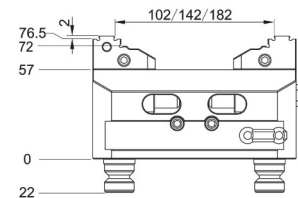
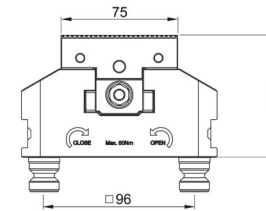
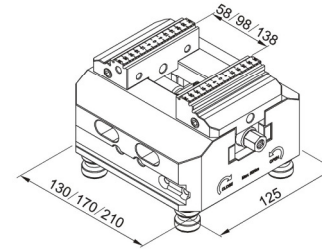
- ▶ Quickly change the direction of the jaws and rotate 180° to increase the clamping range.
- ▶ Special angle lock mechanism, preventing workpiece lifting when locked.
- ▶ Clamping repeating accuracy within 0.005mm.
- ▶ Special swing 1.5° design on one side clamping jaw for better gripping when workpiece is non-parallel.



訂購編號 / Order No.	64887-75	64888-75	64889-75
型號 / Model	PQV575130	PQV575170	PQV575210
本體長度 / Body length	mm 130	mm 170	mm 210
夾持範圍 / Clamping range	mm 0-102	mm 0-142	mm 0-182
鉗口寬度 / Jaw width	mm	75	
零點系統 / Zero-point system		96	
零點螺栓 / Zero-point bolt		20	
擰緊力矩 / Tightening torque	Nm	70	
夾緊力 / Clamping force	kN	14	
中心定位精度 / Centring accuracy	mm	0.005	
重量 / Weight	kg 6.7	kg 8.6	kg 10.4

# PQV 五軸自定心虎鉗 5-Axis Self-Centering Vise

## PQV125-75



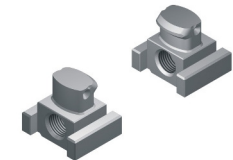
### ● 左右鉗口 Jaw set



訂購編號 Order No. 64800-J75

鉗口寬度 / Jaw width	mm 75
適用於 / Compatible	PQV575130 / 170 / 210

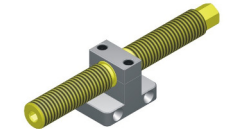
### ● 左右螺母 Nut set



訂購編號 Order No. 64800-N16

螺母尺寸 / Screw Nut	mm M16
適用於 / Compatible	PQV575130 / 170 / 210

### ● 螺桿組件 Screw set



訂購編號 Order No. 64800-S16-130/170/210

螺桿尺寸 / Screw size	mm M16x140 / 180 / 220
適用於 / Compatible	PQV575130 / 170 / 210

### ● 零點螺栓 Zero-point bolt set



訂購編號 Order No. 64942-20

螺栓尺寸 / Bolt size	mm 20
適用於 / Compatible	PQV575130 / 170 / 210



# PQV 五軸自定心虎鉗 5-Axis Self-Centering Vise

## PQV125-125

鉗口寬度125mm

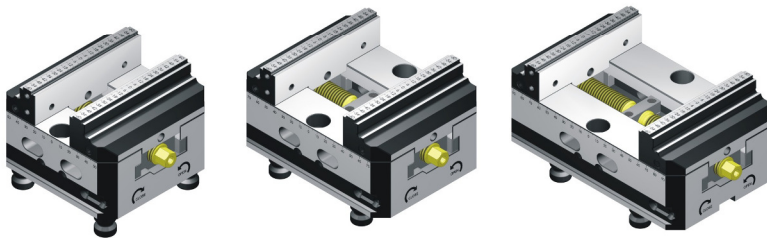
Jaw width 125mm

### 特點

- ▶ 鉗口快速更換方向，旋轉180°增大夾持範圍。
- ▶ 夾爪鉗口和帶動螺母設有角固式接合，能減少夾持上浮量。
- ▶ 鉗口重複夾持精度0.005mm。
- ▶ 單邊夾持端的鉗口，可隨毛胚工件的不平行而擺動，增加毛胚素材夾緊力。

### Features

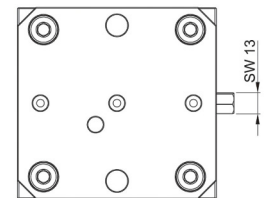
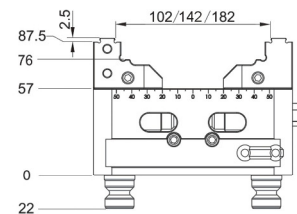
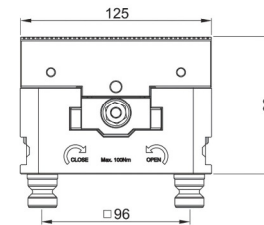
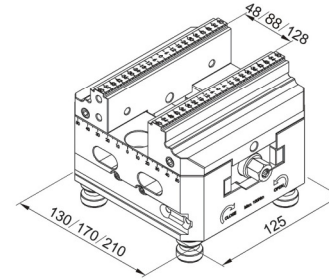
- ▶ Quickly change the direction of the jaws and rotate 180° to increase the clamping range.
- ▶ Special angle lock mechanism, preventing workpiece lifting when locked.
- ▶ Clamping repeating accuracy within 0.005mm.
- ▶ Special swing 1.5° design on one side clamping jaw for better gripping when workpiece is non-parallel.



訂購編號 / Order No.	64890-125	64891-125	64892-125
型號 / Model	PQV125130	PQV125170	PQV125210
本體長度 / Body length	mm 130	mm 170	mm 210
夾持範圍 / Clamping range	mm 0-102	mm 0-142	mm 0-182
鉗口寬度 / Jaw width	mm	125	
零點系統 / Zero-point system		96	
零點螺栓 / Zero-point bolt		20	
擰緊力矩 / Tightening torque	Nm	100	
夾緊力 / Clamping force	kN	16	
中心定位精度 / Centring accuracy	mm	0.005	
重量 / Weight	kg 8.0	kg 9.8	kg 11.5

# PQV 五軸自定心虎鉗 5-Axis Self-Centering Vise

## PQV125-125



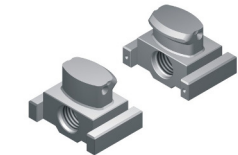
### ● 左右鉗口 Jaw set



訂購編號 Order No. 64800-J125

鉗口寬度 / Jaw width	mm 125
適用於 / Compatible	PQV125130 / 170 / 210

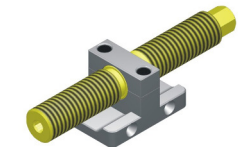
### ● 左右螺母 Nut set



訂購編號 Order No. 64800-N19

螺母尺寸 / Screw Nut	mm M19
適用於 / Compatible	PQV125130 / 170 / 210

### ● 螺桿組件 Screw set



訂購編號 Order No. 64800-S19-130/170/210

螺桿尺寸 / Screw size	mm M19x140 / 181 / 221
適用於 / Compatible	PQV125130 / 170 / 210

### ● 零點螺栓 Zero-point bolt set



訂購編號 Order No. 64942-20

螺栓尺寸 / Bolt size	mm 20
適用於 / Compatible	PQV125130 / 170 / 210

# PQV 五軸自定心虎鉗 5-Axis Self-Centering Vise

## PQV125-125

鉗口寬度125mm

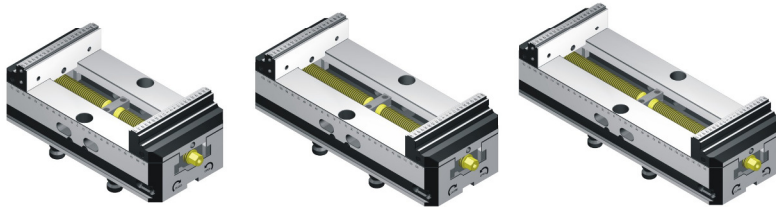
Jaw width 125mm

### 特點

- ▶ 鉗口快速更換方向，旋轉180°增大夾持範圍。
- ▶ 夾爪鉗口和帶動螺母設有角固式接合，能減少夾持上浮量。
- ▶ 鉗口重複夾持精度0.005mm。
- ▶ 單邊夾持端的鉗口，可隨毛胚工件的不平行而擺動，增加毛胚素材夾緊力。

### Features

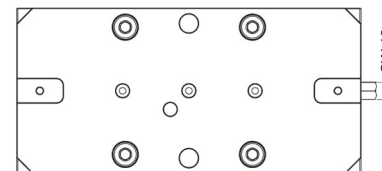
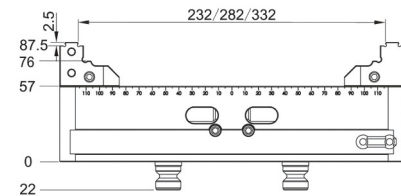
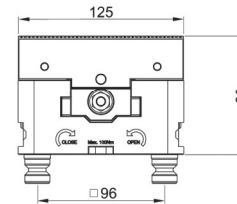
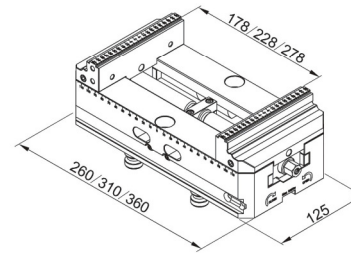
- ▶ Quickly change the direction of the jaws and rotate 180° to increase the clamping range.
- ▶ Special angle lock mechanism, preventing workpiece lifting when locked.
- ▶ Clamping repeating accuracy within 0.005mm.
- ▶ Special swing 1.5° design on one side clamping jaw for better gripping when workpiece is non-parallel.



訂購編號 / Order No.	64893-125	64894-125	64895-125
型號 / Model	PQV125260	PQV125310	PQV125360
本體長度 / Body length	mm 260	310	360
夾持範圍 / Clamping range	mm 0~232	0~282	0~332
鉗口寬度 / Jaw width	mm	125	
零點系統 / Zero-point system		96	
零點螺栓 / Zero-point bolt		20	
擰緊力矩 / Tightening torque	Nm	100	
夾緊力 / Clamping force	kN	16	
中心定位精度 / Centring accuracy	mm	0.005	
重量 / Weight	kg 13.8	16.1	18.4

# PQV 五軸自定心虎鉗 5-Axis Self-Centering Vise

## PQV125-125



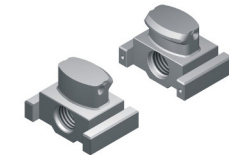
### ● 左右鉗口 Jaw set



訂購編號 Order No. 64800-J125

鉗口寬度 / Jaw width	mm 125
適用於 / Compatible	PQV125260 / 310 / 360

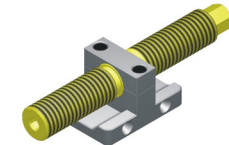
### ● 左右螺母 Nut set



訂購編號 Order No. 64800-N19

螺母尺寸 / Screw Nut	mm M19
適用於 / Compatible	PQV125260 / 310 / 360

### ● 螺桿組件 Screw set



訂購編號 Order No. 64800-S19-260/310/360

螺桿尺寸 / Screw size	mm M19x271 / 321 / 371
適用於 / Compatible	PQV125260 / 310 / 360

### ● 零點螺栓 Zero-point bolt set



訂購編號 Order No. 64942-20

螺栓尺寸 / Bolt size	mm 20
適用於 / Compatible	PQV125260 / 310 / 360