

內藏式增壓虎鉗 HYDRAULIC MACHINE VISE (BUILT-IN TYPE)

MODEL : HV-100、HV-130
HV-150、HV-200

本增壓系統保固一年

★PATENT : M314660



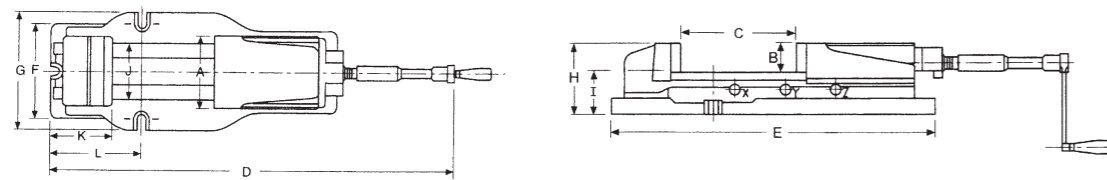
特點：

1. 適合立式綜合切削加工機，銑床使用。
2. 虎鉗本台使用高延展性鑄鐵，防止變形。
3. 本壓力系統只須小小施力，便可發揮強大的夾持力。
4. 三個夾持範圍設計，可快速變換且操作簡便。

FEATURES :

1. Most suitable for vertical machine center, milling machine.
2. Vise body is made of high quality ductile cast iron resists bending.
3. Pressure system for maximum clamping pressure with minimum force.
4. 3 clamping ranges design: Quick to change and easy to operate.
5. Vise pressure system with one year guarantee.

NO.	檢查項目 Inspection Item (100mm)	容許值 Allowance		1.	3.
		JIN YEAR	JIS CLASS		
1	鉗口面對本台底面導正鍵槽之平行度 Parallelism of guide block side of body bottom face and fixed jaw clamp face.	0.01	0.015		
2	鉗口面對滑動面之垂直度 Squareness of fixed jaw clamp face and jaw slideway.	0.02	0.03		
3	兩邊鉗口之平行度 Both jaw plate parallelism.	0.015	0.02		
4	本台滑動面對底面之平行度 Parallelism of body bottom face and jaw slideway.	0.01	0.015		



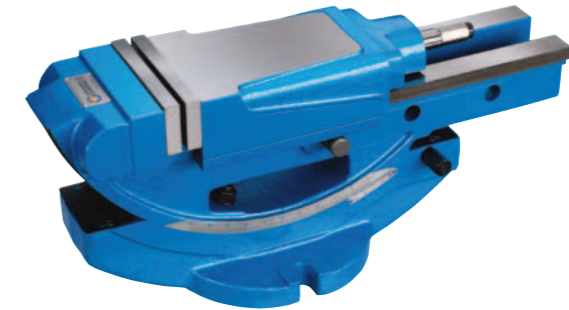
MODEL	A	B	C	D	E	F	G	H	I	J	K	L	Clamping range			Clamping force (kgf)	Weight(kg)	
													X position	Y position	Z position		Table	Disk Rotary
HV-100	105	36	170	525	440	135	170	95	58	80	95	147	0-57	55-114	112-170	2500	21	7
HV-130	130	48	220	670	550	175	207	120	70.5	97	107	195	0-73	72-146	145-220	3500	38	8
HV-150	150	53	300	970	620	182	225	135	82.5	116	117	210	0-100	98-200	198-300	4500	53	11
HV-200	200	62	300	900	680	260	280	162	100	160	150	260	0-100	99-200	198-300	8000	95	13

傾斜式增壓虎鉗 TILTING HYDRAULIC VISE

MODEL : THV-100
THV-150

★本增壓系統保固一年

PATENT : M314660

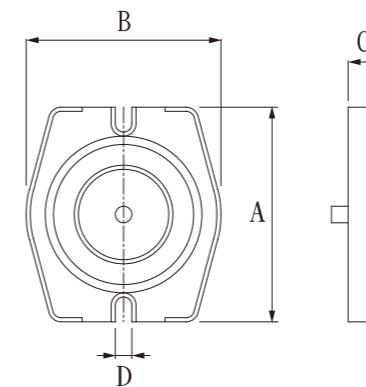


特點：

本虎鉗不同於一般的銑床虎鉗，可依不同需求直接調整出加工角度，其垂直方向調整角度可從0至45度自由調整，刻劃的度數極為精確，可直接調整出加工角度。

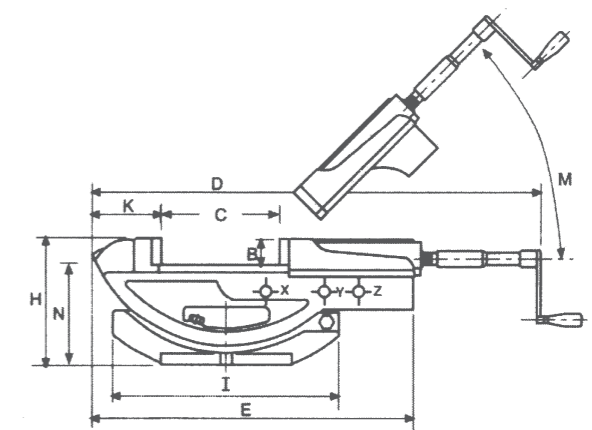
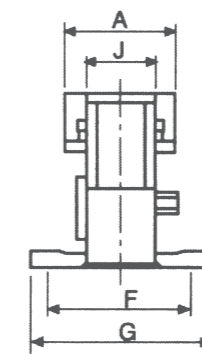
FEATURES :

The vise is different from general vise use for miller. It can be adjusted the angle for processing requirement, and its vertical angle can be adjusted freely 0-45. The graduation is very precise. You may read the processing angle clearly from the scale.



SWIVEL BASE 迴轉底座

ORDER NO.	A	B	C	D	G.W.(kg)
HS-4	270	240	40.7	15	7
HS-5	292	267	44	17	8
HS-6	330	300	40.8	17	11
HS-8	380	345	42.2	19	13



MODEL	A	B	C	D	E	F	G	H	I	J	K	M	N	夾持力 (kgf)	Weight(kg)	
THV-100	105	36	0-170	547	420	106	165	191	340	80	92	0°~45°	160	2500	Body 26kg	Swivel base 7kg
THV-150	150	53	0-300	790	600	165	230	250	435	116	123	0°~45°	197	4500	Body 70kg	Swivel base 11kg