

Now ready for any type of IR4.0 applications

INNGRIT's Zero Point Clamping system features proprietary oil circuit air pressure locking design is able to reach a precision of 0.005mm while sustaining a maximum pull force of 1,000 kg, and the strongest lateral force in the industry. Designed with more than utilitarian purpose in mind, it is also stunning to look at, with every curve and detail taken into consideration. To withstand the pressures of day-in and day-out, operation the team took months to perfect the alloy balance, achieving high wear resistance, toughness, strength and hardness, ensuring that the INNGRIT Zero Point system will be a reliable partner on the production line for years to come.

INNGRIT獨家專利設計的浮動機構,顛覆機械常理,在讓拉頭向下拉緊時,瞬間浮動機構會向上緊縮拉頭,補償至中心原點,達到定位精度0.005mm,並可自動補償使用時所造成耗損,模組單顆下拉力可強達1,000kg,及業界最強的側向力,讓作業速度變成一件很自然的事情,透過快速換模的標準化,達到工業4.0省省錢的高效率。

INNGRIT的原點定位夾持系統設計時不只考慮到功能性,每一個線修、曲線都被研究,不斷精緻化,另外為能承載每天在線上實際作業的考驗,研發團隊花了數月找到黃金比例的合金材質,讓耐磨耗、高強度、高硬度都達到材料最佳化,確保您的原點定位夾持系統可以一直在線上為您創造永續價值。



f



LINE



Web

T +886-6-2430253 F +886-6-2421869
 www.inngrit.com.tw
 inngritzps@gmail.com
 sales00@inngrit.com.tw
 709台灣台南市安南區安新五路1號

©2023.11.02 INNGRIT INC



智能製造

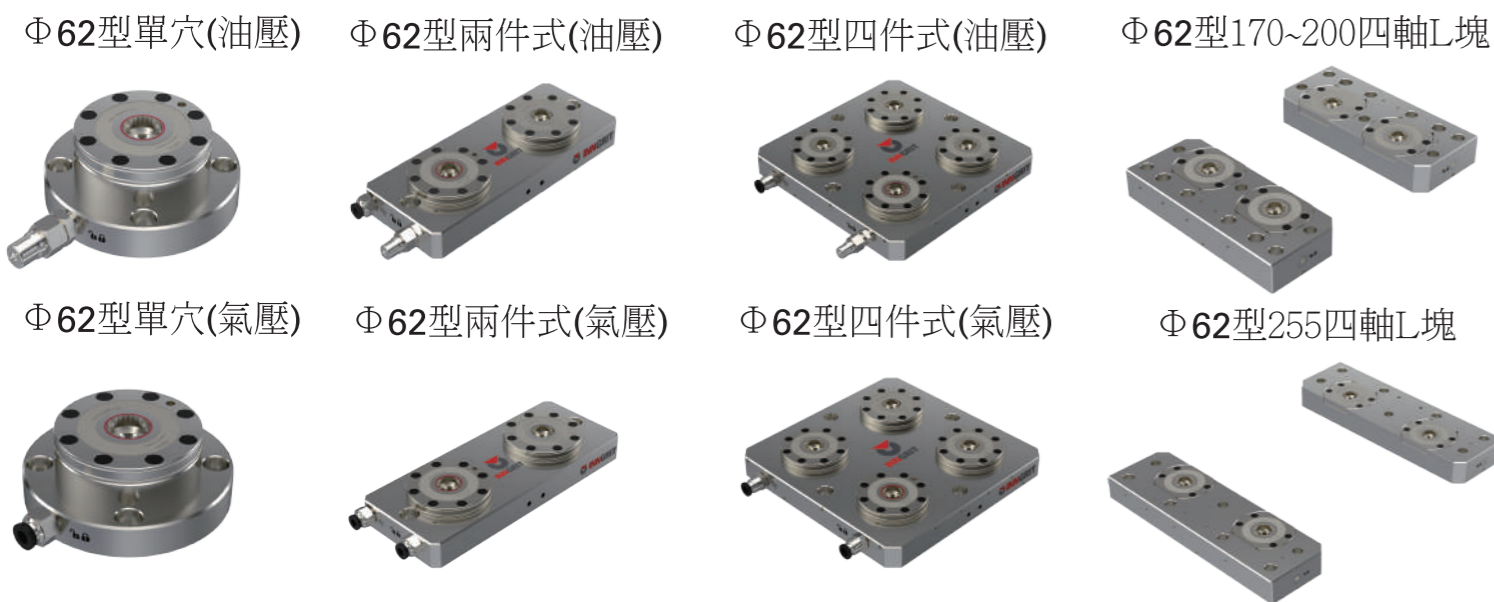
快速換模,精準定位

原點定位夾持系統



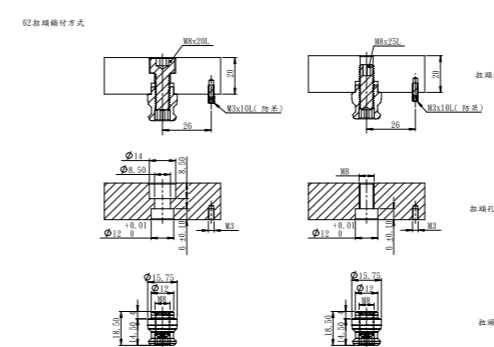
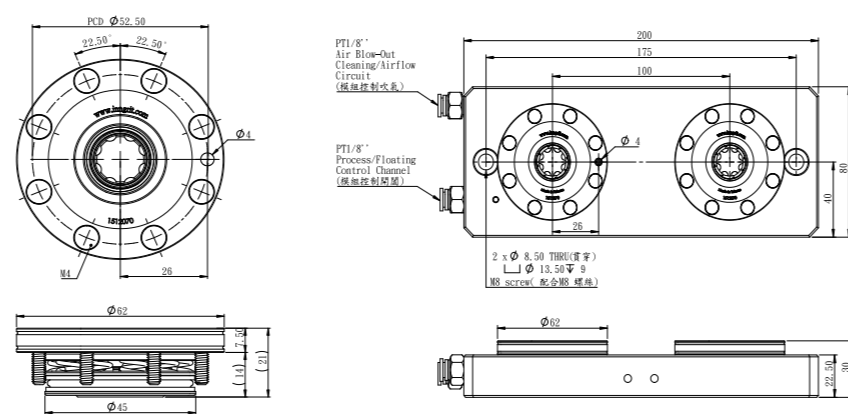
台灣精品獎
 TAIWAN EXCELLENCE
 2019

Φ62標準品 Standardized



兩件式原點定位夾持模組(Φ62 type) Base plates with 2 chucks

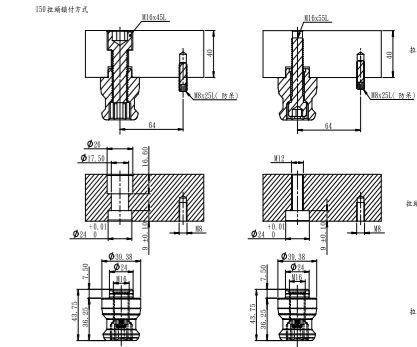
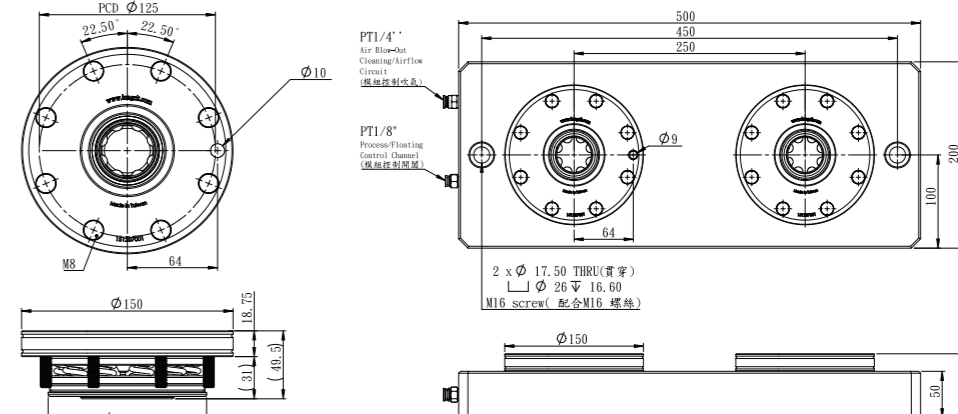
Φ62 定位拉栓鎖附方式 Chucking spigots



Φ62拉栓-使用扭力扳手鎖附最大扭力值:10-17 N.m

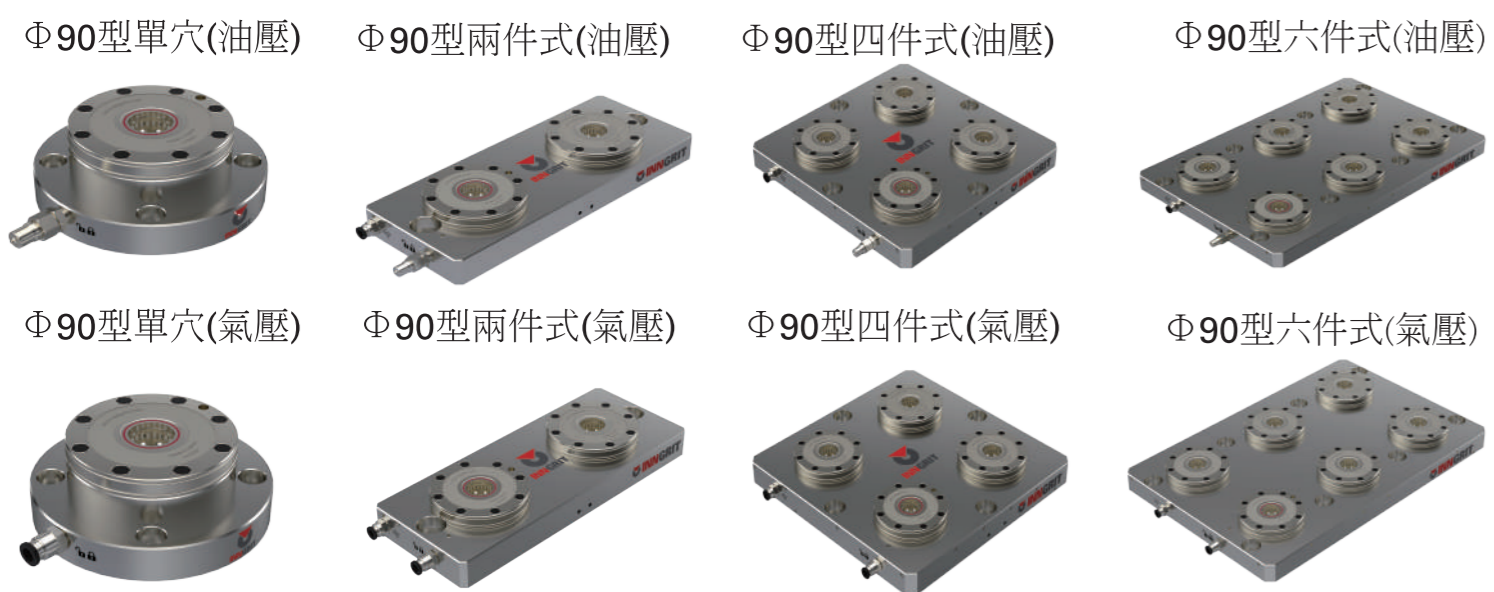
兩件式原點定位夾持模組(Φ150 type) Base plates with 2 chucks

Φ150 定位拉栓鎖附方式 Chucking spigots



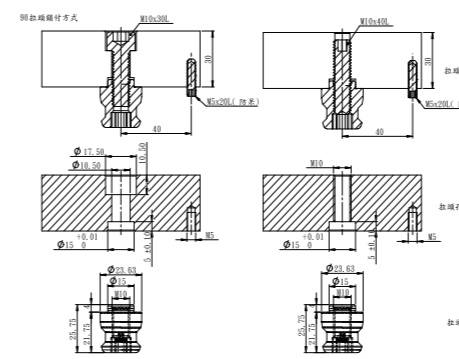
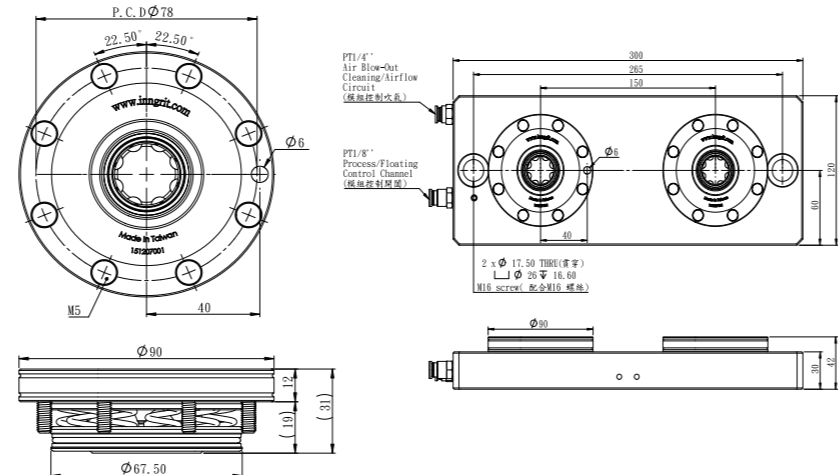
Φ150拉栓-使用扭力扳手鎖附最大扭力值:90-145 N.m

Φ90標準品 Standardized



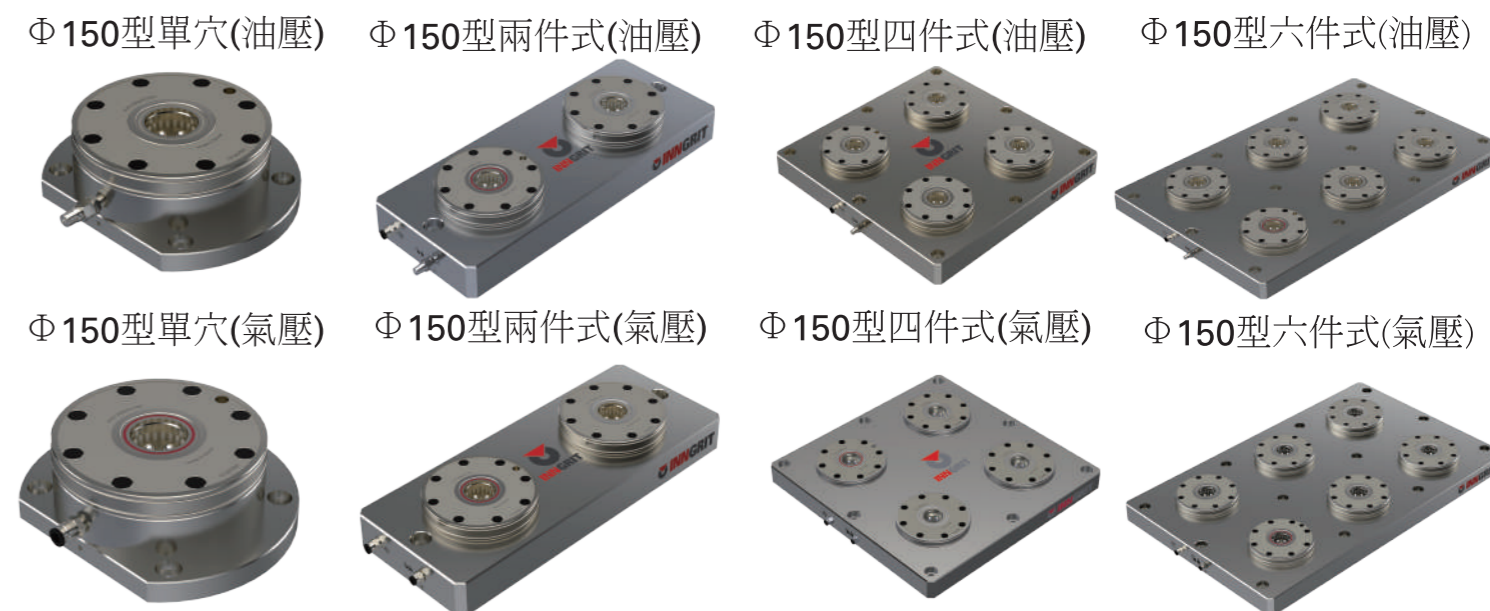
兩件式原點定位夾持模組(Φ90 type) Base plates with 2 chucks

Φ90 定位拉栓鎖附方式 Chucking spigots

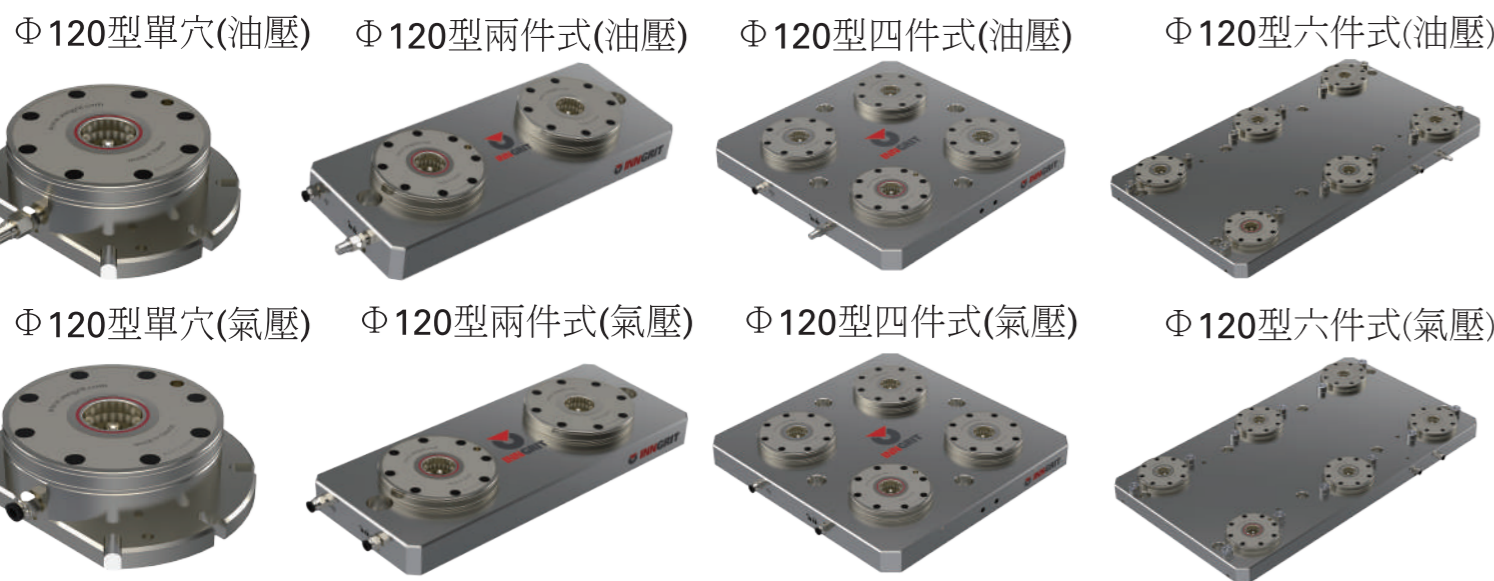


Φ90拉栓-使用扭力扳手鎖附最大扭力值:20-30 N.m

Φ150標準品 Standardized

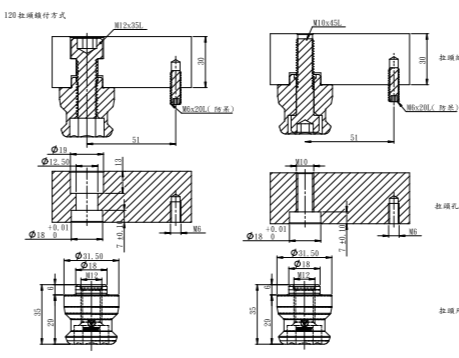
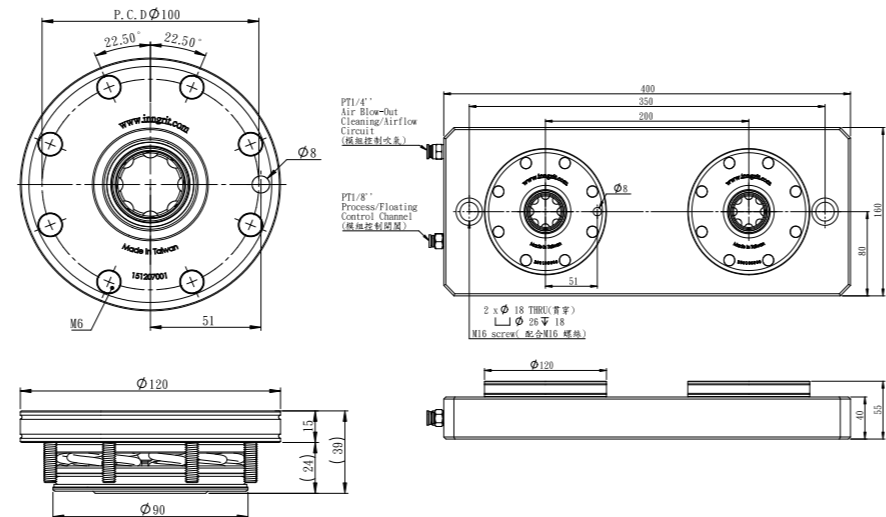


Φ120標準品 Standardized



兩件式原點定位夾持模組(Φ120 type) Base plates with 2 chucks

Φ120 定位拉栓鎖附方式 Chucking spigots



Φ120拉栓-使用扭力扳手鎖附最大扭力值:30-40 N.m

Φ客製化商品 customized

