



Laser welding perfectly solves
the problem of labor shortage



Designed and manufactured by Taiwan 3 Axle Technology Company

Maxweld SERIES FIBER LASER WELDING MACHINE

TAIWAN 3 AXLE TECHNOLOGY CO.,LTD

Designed with double handles for convenient pushing, adjusted to fit human height

Large-sized touch screen

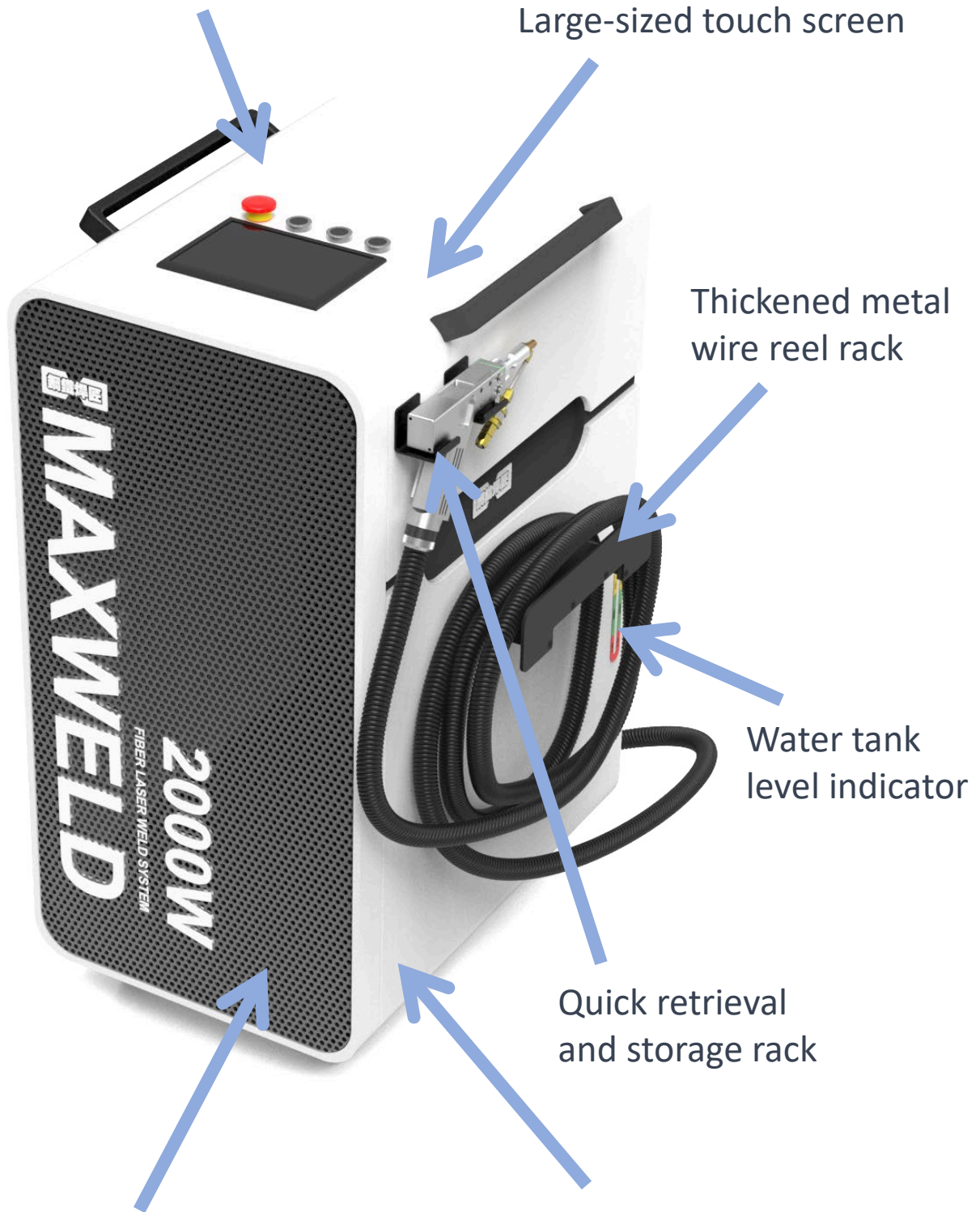
Thickened metal wire reel rack

Water tank level indicator

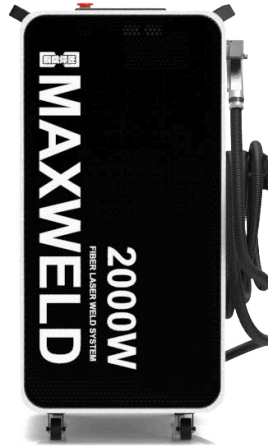
Quick retrieval and storage rack

Matte white baked paint

Large air intake, more effective for hot and cold air exchange

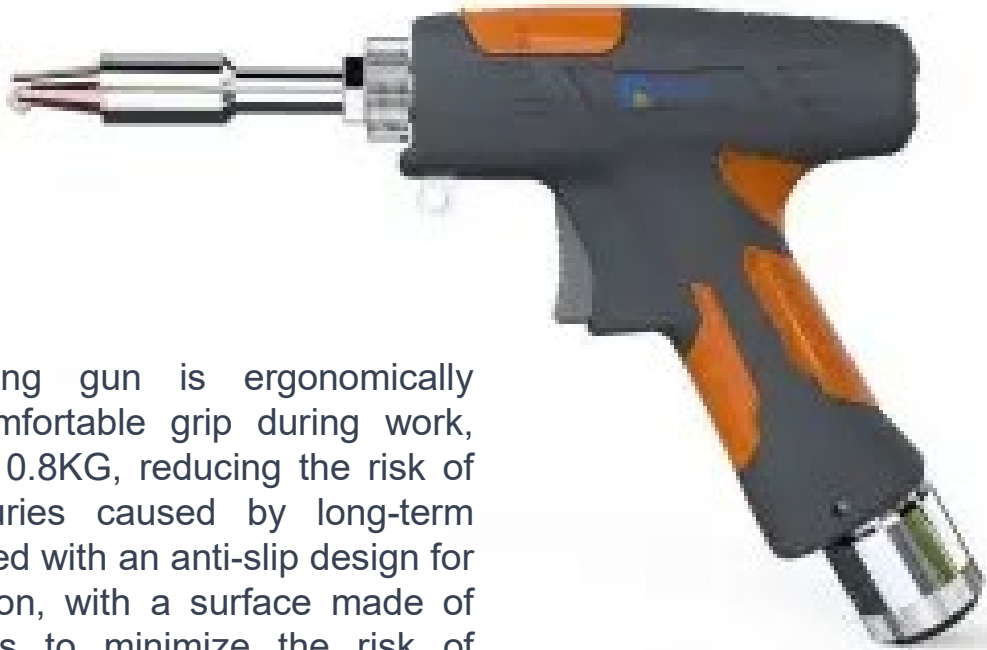


Equipment specifications



Model	Maxweld 1500W	Maxweld 2000W
Laser Brand	Max	
Function	cutting / welding / weld cleaning	
Laser lifespan	100,000Laser hour (Theoretical reference value, actual lifespan depends on processing conditions and parameters)	
Melting depth	3mm	5mm
Fiber length	8m	
Laser Spot	0.5~6mm	
Energy consumption	5.3Kw	7Kw
Voltage	Single phaseAC 220V / 50Hz-60Hz (Please specify 50Hz or 60Hz, default is 60Hz)	
Materials	Stainless steel, steel, iron, galvanized sheet, aluminum sheet, brass	
Size	570mm x 670mm x 1000mm	
Weight	125KG	

- The above parameters may be subject to minor adjustments due to equipment upgrades or design changes without prior notice. The latest quotation specifications shall prevail.



Welding gun

The new welding gun is ergonomically designed for comfortable grip during work, and weighs only 0.8KG, reducing the risk of occupational injuries caused by long-term work. It is equipped with an anti-slip design for handheld operation, with a surface made of non-slip materials to minimize the risk of slipping and accidental dropping.



Tool-less design

Replacing the protective lens can be done quickly and without tools, reducing the risk of dust entering the inside during the replacement process.



Welding copper nozzle

The welding torch comes with a range of interchangeable copper nozzles for different welding requirements, such as inside corner, outside corner, filling, and cutting. These nozzles are designed for high strength, hardness, and resistance to high temperature and heat reflection, making them suitable for various welding objects. They can be quickly replaced to simplify the welding process.

Wire feeding system

The welding machine features a dual drive wire feeding system and interchangeable wire feeding rollers to enhance the stability of wire feeding and welding. It also comes with a large touchscreen parameter adjustment system, allowing for quick and flexible adjustment of wire feeding speed and welding speed for welding objects of different sizes. These features make the welding process more efficient and easy. Additionally, the welding machine is coated with a matte black paint. The single feeder machine comes standard with 1500W



Dual feeding system

Designed for high-power welding machines of 2000W and above, the dual feeding function allows for automatic feeding of two 1.6mm welding rods simultaneously. This doubles the welding capacity and enables rapid filling of welds below 3mm. Additionally, for thicker metals, there is a sufficient amount of filling material to achieve a deeper melt.



Accessories list

Item	Unit	Quantity	Remarks
Laser welding machine	Set	1	Laser Brand: Max
Laser safety goggles	Pcs	1	Fiber laser protection level OD4
Heat-resistant gloves	Pcs	1	Leather heat-resistant gloves
Nitrogen gauge	Pcs	1	
Copper nozzle	Set	1	Inside corner filler * 2, outside corner filler * 2, outside corner * 2, cutting * 1
Protective lens	Pcs	3	
Wire feeder	set	1	

Mode	Description
Spot welding	A welding method used for fastening materials quickly, where the laser output time is controlled manually.
No wire feeding welding	A no-filler welding mode where the laser output is controlled manually for continuous full welding processing.
Auto. wire feeding welding	A welding mode that combines filler wire feeding to enhance the structural integrity of the weld.

Material	1500W	2000W
Stainless steel	3mm	5mm
Galvanized steel	3mm	5mm
Carbon steel	3mm	5mm
Aluminum	2.5mm	3.5mm

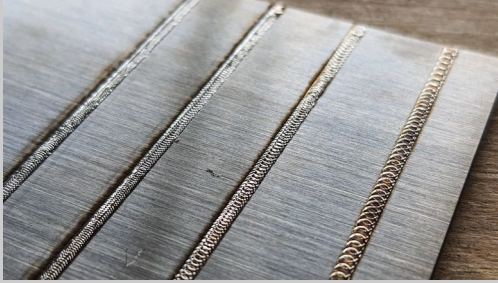


This machine allows for the setting of 9 groups of commonly used parameters, which can be quickly switched between. This helps to prevent welding failures caused by incorrect parameter settings, such as material classification or wire thickness classification.

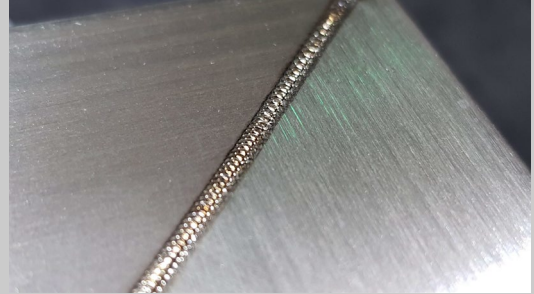


The machine supports 8 languages, including, English, Japanese, Korean, Russian, German, and French

設備細節



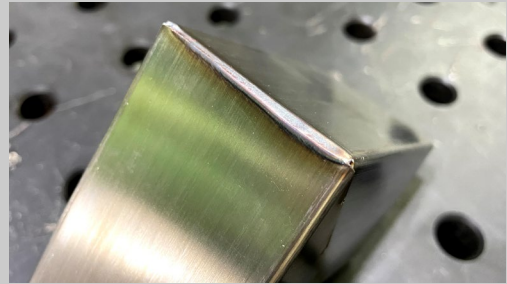
No-filler welding



No-filler welding



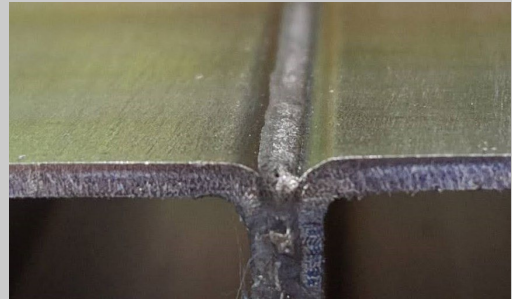
Filler welding



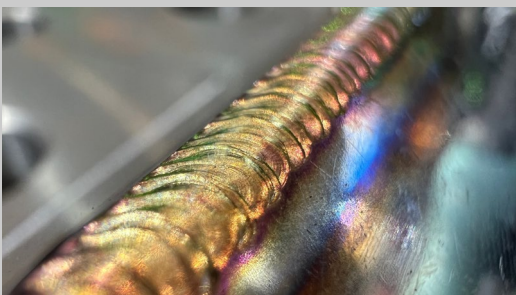
Filler welding



Filler welding



Filler welding



Filler welding



Filler welding



TAIWAN 3 AXLE TECHNOLOGY CO.,LTD

The best solution for laser cutting
/engraving/welding/rust Cleaning

Address : No.88-1, Ln. 10, Sec. 3, Wuquan W. Rd., Nantun Dist., Taichung City 408, Taiwan (R.O.C.)

Web : <https://www.3axle.com/>

Email : service@3axle.com