



艾克斯馬克全球有限公司

Item Of Maid Products:

- Magnetic Screw & Roller Conveyer
- Magnetic Separator
- Magnetic Chuck
- Magnetic Tools
- Magnetic Cleaner
- Magnetic Demagnetizer
- Work Piece Burring Machine
- Oil & Water Flowmeter
- Oil Circulation Lubrication Center

Magnetic Separator & Filters

Magnetic Screw & Rolling Conveyer

Magnetic Tools & Demagnetizer

Compact Band Filter Machine & Paper Bed Filter Machine



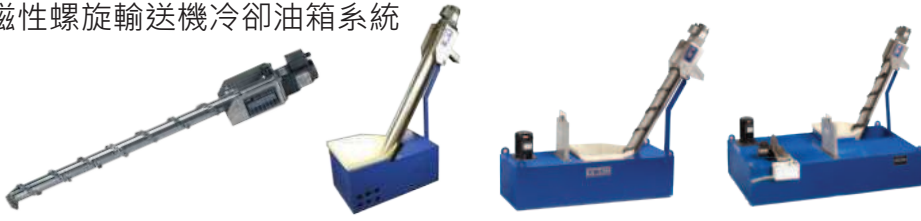
XMAC Global Co.,LTD.
艾克斯馬克全球有限公司

No.873,Jia-Dong Rd,Bade Dist.,Taoyuan,Taiwan
桃園市八德區茄苳路873號
TEL:+886(3)377-9855 FAX:+886(3)377-9050
<http://www.xmac-global.com>
e-mail:xmac@xmac-global.com

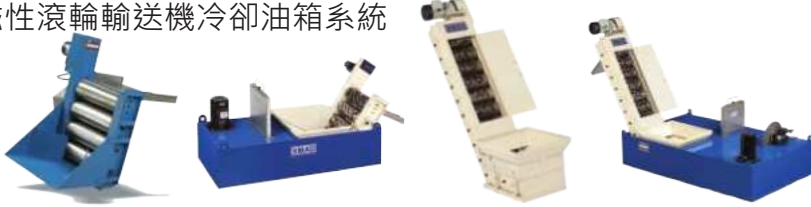
XMAC Global Co.,LTD.
<http://www.xmac-global.com>

Index

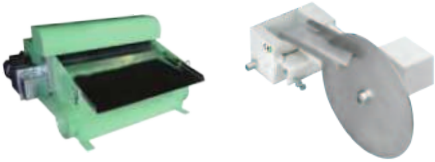
Magnetic Screw Conveyor & Tank Unit 3
磁性螺旋輸送機冷卻油箱系統



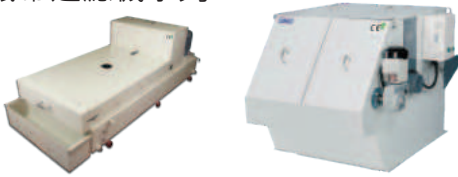
Magnetic Rolling Conveyor & Tank Unit 10
磁性滾輪輸送機冷卻油箱系統



Magnetic Rolling Separator & Disk Oil Simmer 15
磁筒鐵粉過濾機、盤式油水分離機



Paper Bed Filter Machine & Compact Band Filter Machine 17
紙帶過濾機系列



Magnetic Tool Series 21
磁性應用工具系列



Demagnetizer Series 29
脫磁機系列



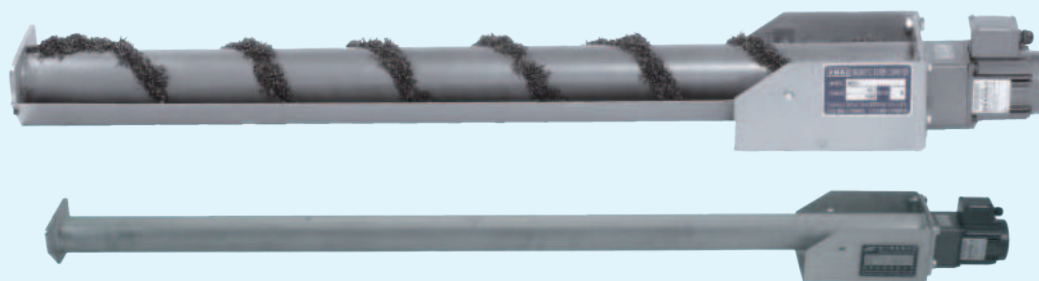
Magnetic Separator & Filter Equipment Series 33
磁選機系列



MAGNETIC SCREW CONVEYER

磁性螺旋輸送機

MSC



Application

- For removing and conveying metal chips left on broaching machines, sawing machines, gear hobbing machines and cut-off machines.
- For collecting and conveying tiny stamped parts, such as nuts and washers etc.
- Suitable for removing and conveying metal chips after processing for the cast-iron workpiece.

用途

- 拉床、滾齒機、鋸床、切斷機等加工機械切削鐵屑搬送分離。
- 螺帽、華司、鍊條等細小衝壓件搬送收集。
- 鑄鐵材料切削屑搬送清除效果最佳。

Example



Gundrill Machine



Cut-Off Machine



Sawing Machine

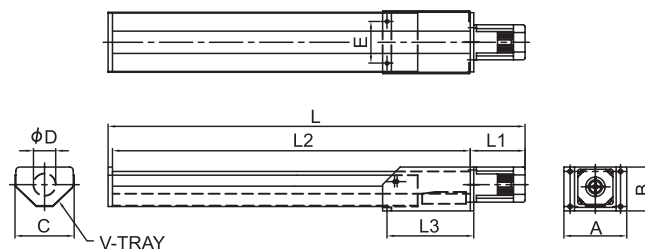


Hobbing Machine

MAGNETIC SCREW CONVEYER

磁性螺旋输送机

MSC50



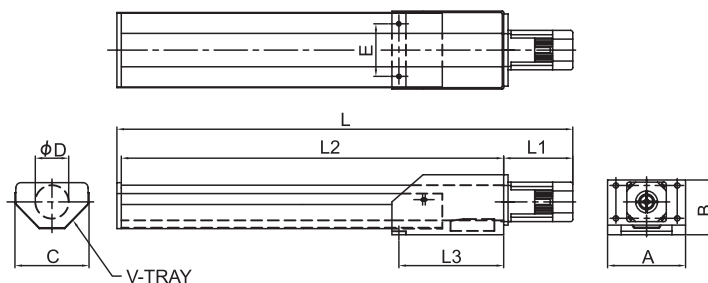
Specification

Unit(mm)

Size Model	Nominal Dimension	Dimension									Motor	Power Source	Rotation	Capacity
		A	B	C	D	E	L	L1	L2	L3				
MSC5005	Ø50x500 st	143	100	135	Ø50	95 2xM8	625	117	500	200	25W	3Phase AC 200V/380V	30/36Rpm. 50/60Hz	60kg/hr
MSC5008	Ø50x800 st						925		800					
MSC5010	Ø50x1000 st						1125		1000					

With different size can be custom-made

MSC75



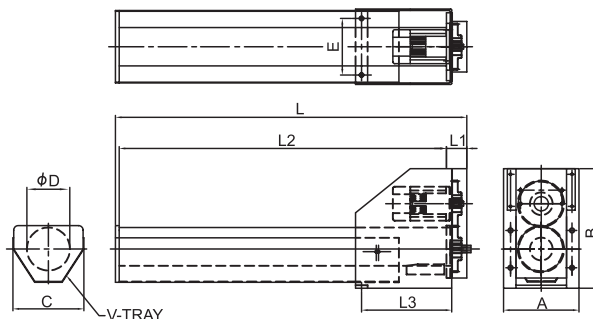
Specification

Unit(mm)

Size Model	Nominal Dimension	Dimension									Motor	Power Source	Rotation	Capacity
		A	B	C	D	E	L	L1	L2	L3				
MSC7508	Ø75x800 st	178	125	169	Ø76	120 2xM10	950	142	800	255	25W	3Phase AC 200V/380V	30/36Rpm. 50/60Hz	100kg/hr
MSC7510	Ø75x1000 st						1150		1000					
MSC7512	Ø75x1200 st						1350		1200					
MSC7515	Ø75x1500 st						1650		1500					
MSC7518	Ø75x1800 st						1950		1800					
MSC7520	Ø75x2000 st						2150		2000					

With different size can be custom-made

MSC100



Specification

Unit(mm)

Size Model	Nominal Dimension	Dimension									Motor	Power Source	Rotation	Capacity
		A	B	C	D	E	L	L1	L2	L3				
MSC1015	Ø101x1500 st	200	317	188	Ø101	150 2xM10	1564	54	1500	255	60W	3Phase AC 200V/380V	30/36Rpm. 50/60Hz	200kg/hr
MSC1020	Ø101x2000 st						2064		2000					
MSC1025	Ø101x2500 st						2564		2500					
MSC1030	Ø101x3000 st						3064		3000					

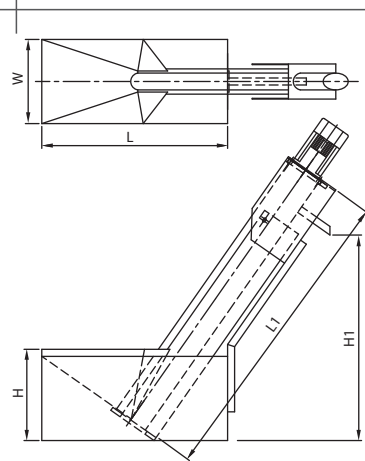
With different size can be custom-made

STANDARD MAGNETIC SCREW CONVEYER UNIT 標準型磁性螺旋輸送機單元組合

LSC-100



Dimension



Application

- Ⓛ Application for Broaching Machine, Gear Hobbing Machine and Band Sawing Machine etc.
- Ⓛ Filtration accuracy is within 50 μm.
- Ⓛ The length of iron scraps is within 100mm.
- Ⓛ Capacity: Water-based lubrication coolant: 200 ℓ/min
Cutting oil: 120 ℓ/min.

用途

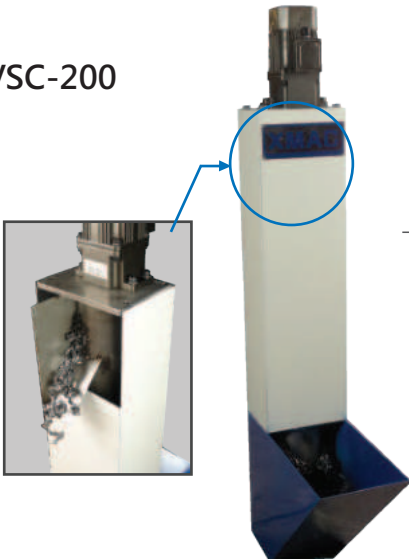
- Ⓛ 適合使用於拉床、齒輪切割機、切斷機等機器設備。
- Ⓛ 磁性體切削屑分離過濾精度50 μm。
- Ⓛ 搬送切削屑長度100mm以下。
- Ⓛ 處理能力:水溶性切削液200 ℓ/min
切削油120 ℓ/min

Specification

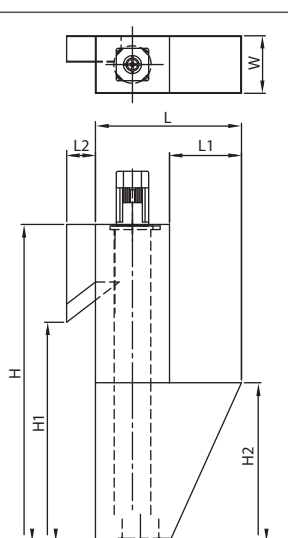
Model	Size	Capacity (kg/hr)	Dimension				Weight	
			L	W	H	L1	H1	(KG)
LSC-100		100	480	400	285	1200	1000	50

VERTICAL MAGNETIC SCREW CONVEYER UNIT 立式磁性螺旋輸送機單元組合

VSC-200



Dimension



Application

- Ⓛ Application for Broaching Machine, Gear Hobbing Machine and Band Sawing Machine etc.
- Ⓛ Filtration accuracy is within 50 μm.
- Ⓛ The length of iron scraps is within 100mm.
- Ⓛ Capacity: Water-based lubrication coolant: 200 ℓ/min
Cutting oil: 120 ℓ/min.

用途

- Ⓛ 適合使用於拉床、齒輪切割機、切斷機等機器設備。
- Ⓛ 磁性體切削屑分離過濾精度50 μm。
- Ⓛ 搬送切削屑長度100mm以下。
- Ⓛ 處理能力:水溶性切削液200 ℓ/min
切削油120 ℓ/min

Specification

Model	Size	Capacity (kg/hr)	Dimension						Weight	
			L	W	H	L1	L2	H1	H2	(KG)
VSC-200		200	590	190	1020	450	60	800	320	70

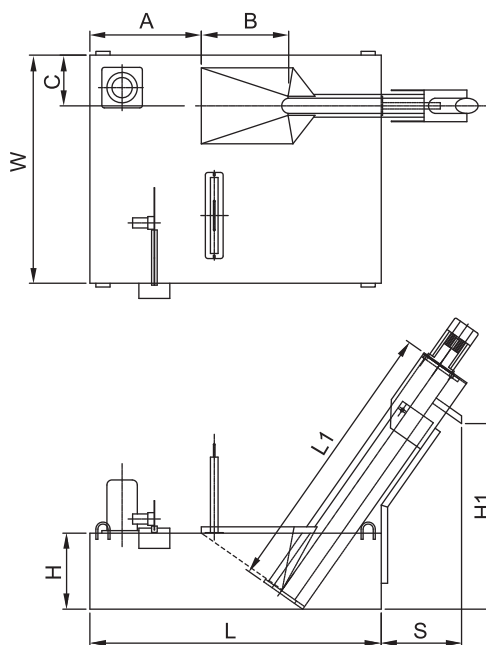
COOLANT SYSTEM & MAGNETIC SCREW CONVEYER

切削液冷卻系統 & 磁性螺旋輸送機

TSC



Dimension



Application

- Ⓛ Application for Broaching Machine, Gear Hobbing Machine and Band Sawing Machine etc.
- Ⓛ Filtration accuracy is within 50 μm.
- Ⓛ The length of iron scraps is within 100mm.
- Ⓛ Capacity: Water-based lubrication coolant: 200 ℓ/min
Cutting oil: 120 ℓ/min.

用途

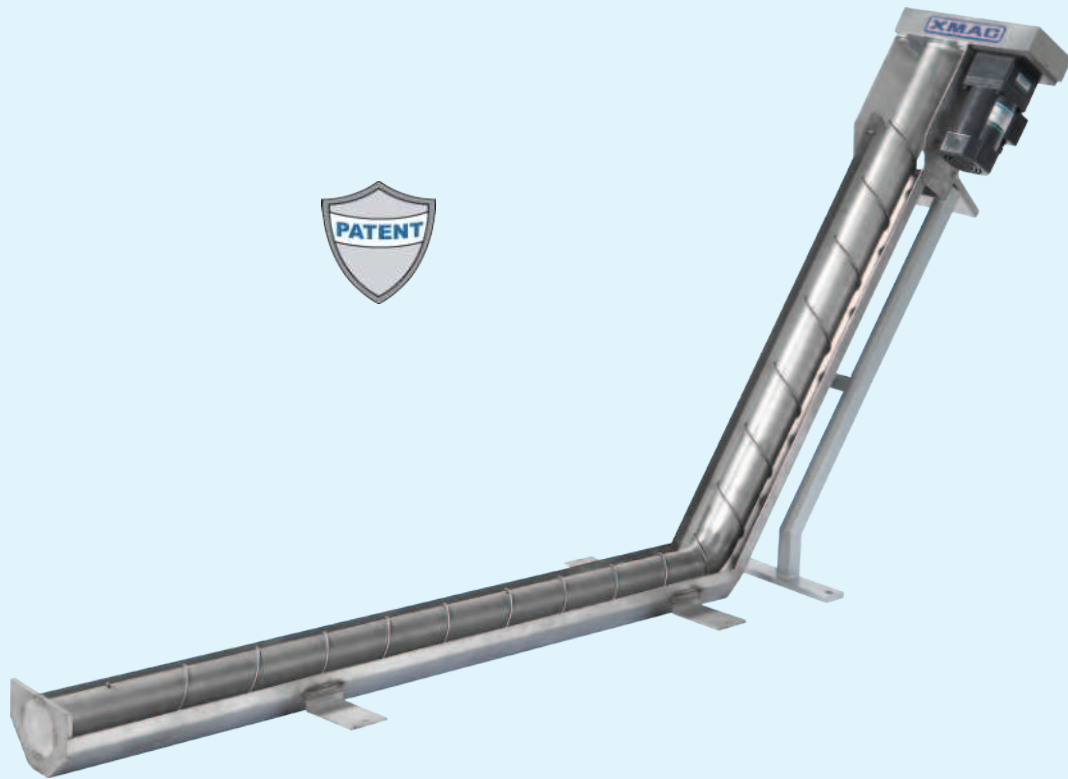
- Ⓛ 適合使用於拉床、齒輪切割機、切斷機等機器設備。
- Ⓛ 磁性體切削屑分離過濾精度50 μm。
- Ⓛ 搬送切削屑長度100mm以下。
- Ⓛ 處理能力:水溶性切削液200 ℓ/min
切削油120 ℓ/min

Specification

Size Model	Capacity (ℓ/ Min.)	Body Dimention							Tank Dimension			Tank (ℓ)	Weight (KG)
		L1	W1	H1	A	B	C	S	L	W	H		
TSC-A1	100	1190	300	860	190	300	200	190	900	1150	300	250	250
TSC-A2	100	1190	300	860	440	300	200	190	1150	900	300	250	250

Unit(mm)

L TYPE MAGNETIC SCREW CONVEYER L型磁性螺旋輸送機



Feature

- ▶ Transport wet or dry ferrous chips, scraps or parts.
- ▶ Patent design for transport system ensures to convey the scraps smoothly.
- ▶ Low energy consumption and light duty construction.
- ▶ Made of stainless steel and ensure the durability.
- ▶ Jam free operation by smooth surface.

Application

- The L type magnetic screw conveyor is used to transport a wide variety of scraps, chips and parts in different industry.
- ▶ Metal working industry
- ▶ Recycling plants
- ▶ Scraps material processing
- ▶ Chemical industry
- ▶ Mining Industry
- ▶ Auto parts industry

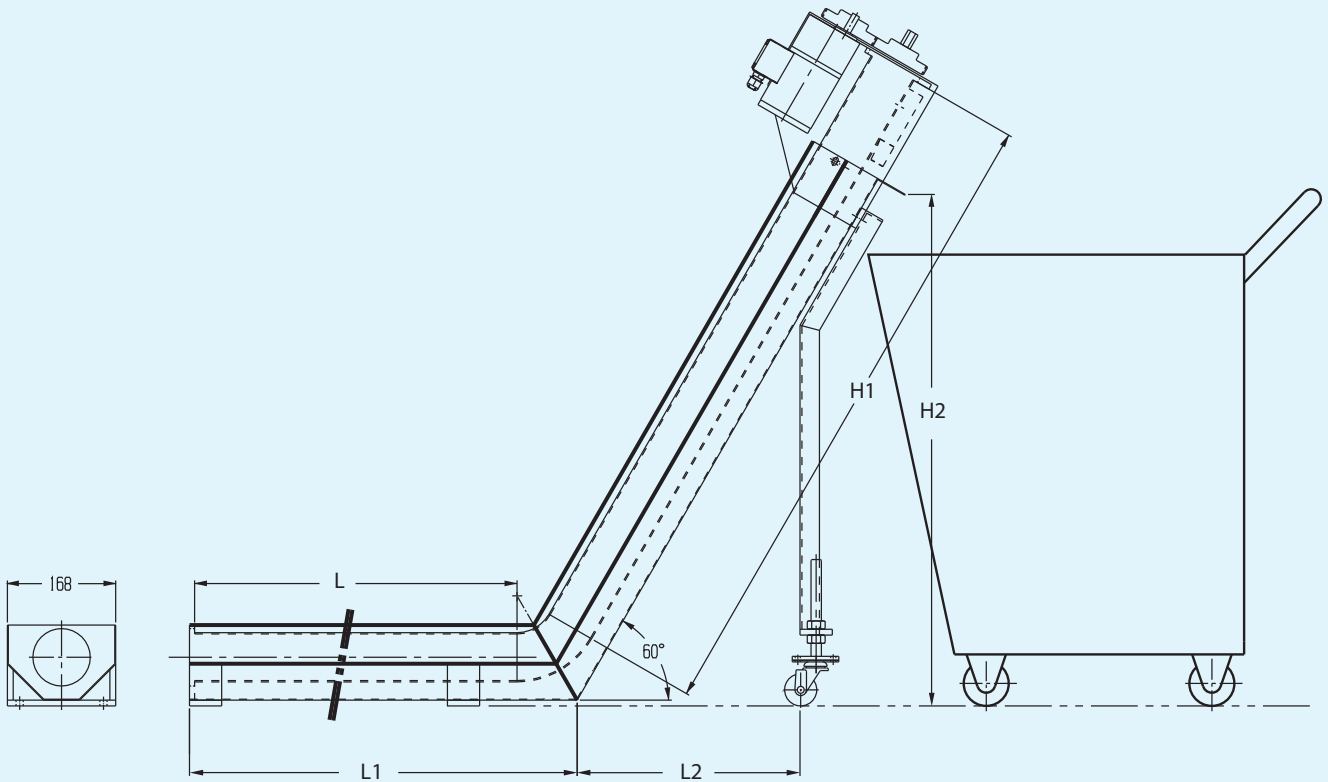
性能

- ▶ 不論乾燥或潮濕，含有鐵質之切削屑或零組件皆可輸送。
- ▶ L型專利結構設計，可確保輸送順暢。
- ▶ 低能源消耗、輕量化結構。
- ▶ 全機不鏽鋼製造，具耐久性。
- ▶ 運作中永不堵塞。

用途

- L型磁性螺旋輸送機可輸送各類型切削鐵屑、零組件，並用於以下不同產業。
- ▶ 金屬加工產業
- ▶ 資源回收產業
- ▶ 金屬切削處理
- ▶ 化學產業
- ▶ 汽車零組件產業
- ▶ 礦業

Dimension

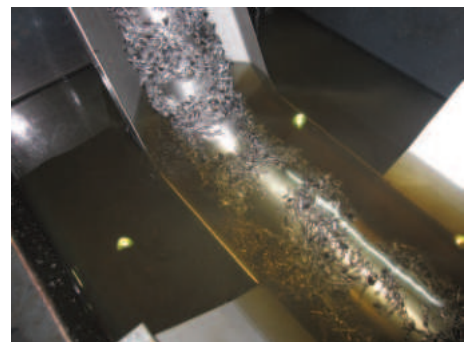


Specification

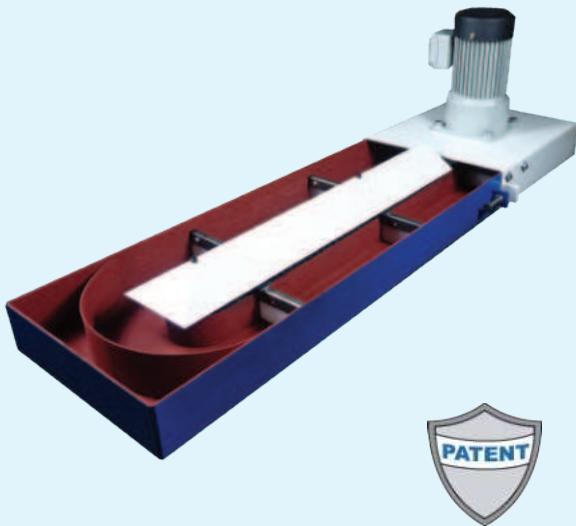
Unit(mm)

Model	Size	L	L2	H1	H2	Degree
LMSC-1000.1000		1000	Optional	1000	850	60°
LMSC-1100.1000		1100		1000	850	
LMSC-1200.1000		1200		1000	850	
LMSC-1300.1000		1300		1000	850	
LMSC-1000.1200		1000		1200	1020	
LMSC-1100.1200		1100		1200	1020	
LMSC-1200.1200		1200		1200	1020	

Example



RAIL-TYPE SCRAPS CONVEYER 軌道式除屑輸送機



Application

- Ⓜ Suitable for removing and conveying the magnetic & non-magnetic metal scraps simultaneously, such as stainless, aluminum, plastic and iron material.
- Ⓜ Low height and flat construction can save space; Easy to install in lathe machines, milling machines, drilling machines, broaching machines, gear hobbing machines, sawing machines, CNC M/C and all kinds of machine tools.
- Ⓜ Light weight; Enable to adjust angle of elevation for the removal of scraps.
- Ⓜ Low maintain cost, Low installed cost and high efficiency.

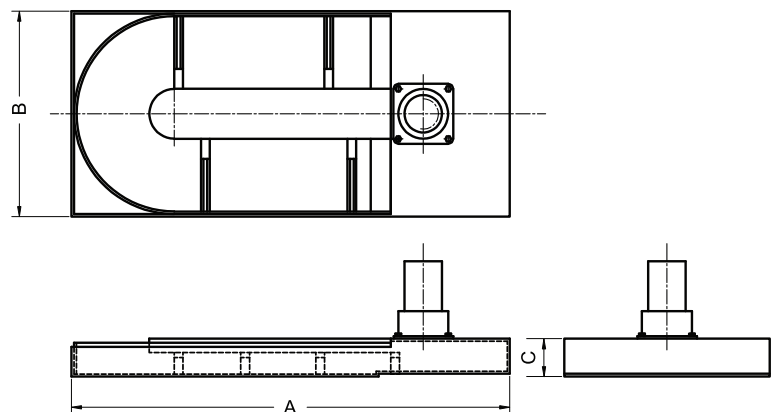
用途

- Ⓜ 軌道式除屑輸送機使用範圍非常寬廣，可解決不鏽鋼、銅材、鋁材等切削分離排除作業。
- Ⓜ 排屑運轉設計為平面式運轉，結構高度低，易於安裝於各類型車床、銑床、鑽床、拉床、滾齒機、鋸床、中心加工機及工具機。
- Ⓜ 造型輕薄，可作仰角式排屑使用，其分離排屑效果極佳。
- Ⓜ 低維護成本、低安裝成本與高效率。

Example



Dimension



Specification

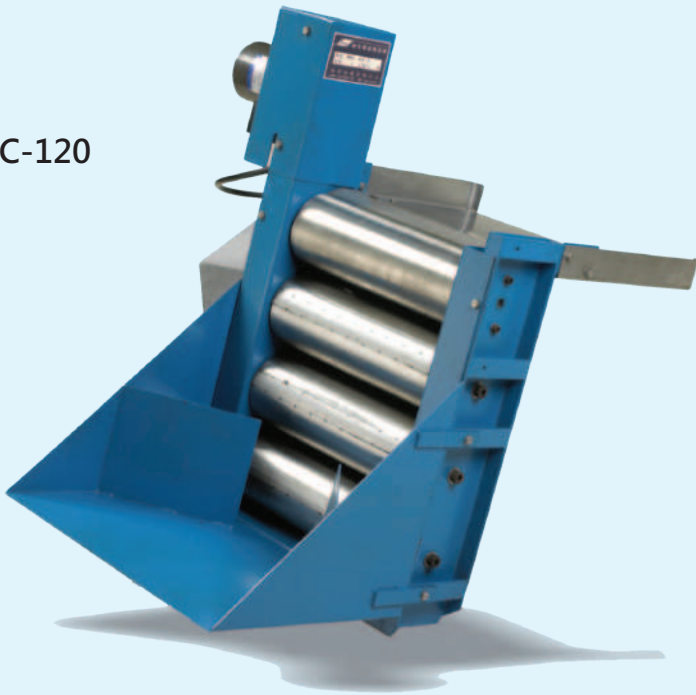
		Unit(mm)		
Model	Size	A	B	C
	RY-80AS	800	320	80

Custom size available upon request.

MAGNETIC ROLLER CONVEYER

磁性滾輪輸送機

MRC-120



Application

- ⌘ Suitable for removing the metal scraps on broaching machine, gear hobbing machine, gundrill machine, cut-off machine and SPM... etc.
- ⌘ Conveying the small workpiece.

用途

- ⌘ 拉床、滾齒機、槍鑽深孔機、自動切斷機、各式專用機具、切削鐵屑搬送。
- ⌘ 螺絲、螺母、沖壓件等細小部品零件輸送。

Example

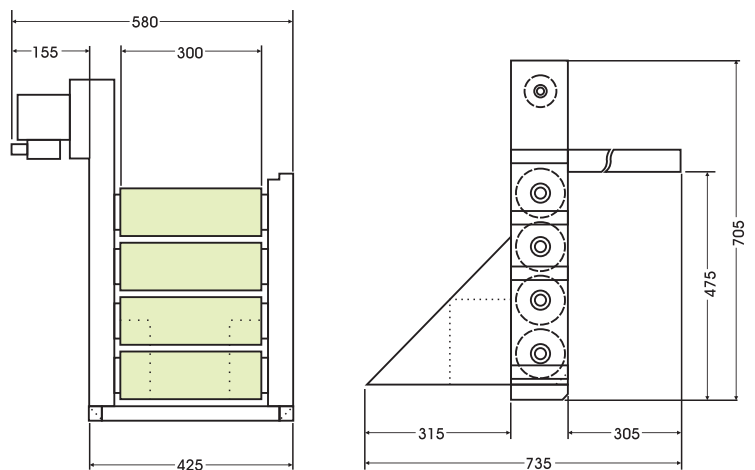


Gundrill Machine



Forging Press

Dimension



Specification

Size Model	Motor	Based On Oil Capacity	Conveying Capacity	Weight (KG)	Unit(mm)
MRC-120	40W 3Phase 220V/380V	120L/min	80kg/hr	50	

COOLANT TANK & MAGNETIC ROLLER CONVEYER 切削液冷卻油箱 & 磁性滾輪輸送機

TMP-138



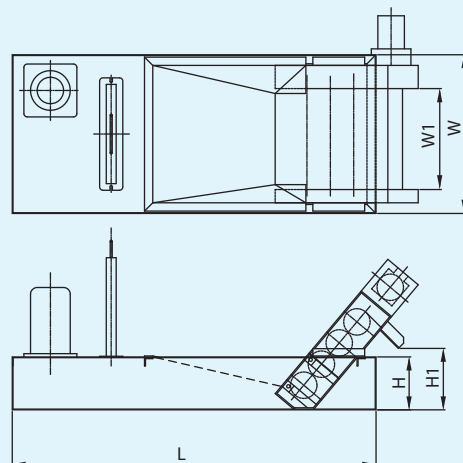
Application

- ☞ Suitable for Taping Machine, Deep-Hole Drilling Machine etc.
- ☞ Designed for conveying the iron scraps FC of material workpieces.
- ☞ Capacity: Water-based lubrication coolant 120 ℓ/min
Cutting oil 60 ℓ/min.
- ☞ Models with different specifications and sizes can be custom-made.

用途

- ☞ 適用NC攻牙機、小型深孔鑽孔機等設備。
- ☞ 特別適用於FC材質工件加工切削屑搬送分離作業。
- ☞ 處理能力: 切削液水容量120 ℓ/min
切削油容量60 ℓ/min
- ☞ 本產品規格、尺寸可由客戶指定製作。

Dimension



Specification

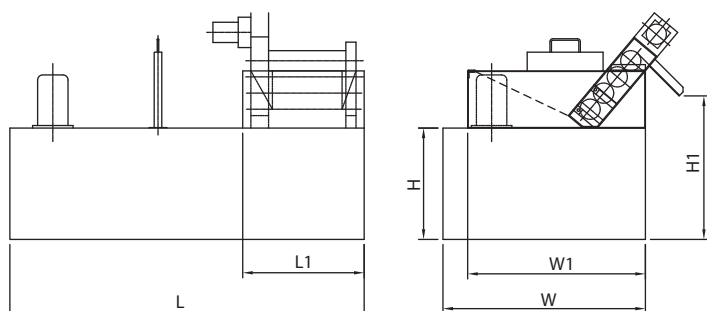
Model	Size	Capacity (ℓ/min.)	Dimension					Unit(mm)
			L	W	H	W1	H1	Weight (KG)
TMP-138		100	900	480	160	300	180	125

COOLANT TANK & MAGNETIC ROLLER CONVEYER 切削液冷卻油箱 & 磁性滾輪輸送機

TDS-200



Dimension



Application

- ☞ Suitable for Machine Centers, Deep-Hole Drilling Machine etc.
- ☞ Designed for conveying the iron scraps FC of material workpieces.
- ☞ Capacity: Water-based lubrication coolant 200 ℓ/min
Cutting oil 100 ℓ/min.
- ☞ Models with different specifications and sizes can be custom-made.

用途

- ☞ 適用NC攻牙機、小型深孔鑽孔機等設備。
- ☞ 特別適用於FC材質工件加工切削屑搬送分離作業。
- ☞ 處理能力: 切削液水容量200 ℓ/min
切削油容量100 ℓ/min
- ☞ 本產品規格、尺寸可由客戶指定製作。

Specification

Model	Size	Capacity (ℓ/min.)	Dimension						Unit(mm)
			L	W	H	L1	W1	H1	Weight (KG)
TDS-200		120	1400	800	530	470	650	430	225

L-TYPE MAGNETIC ROLLER CONVEYER

L型磁性滾輪輸送機



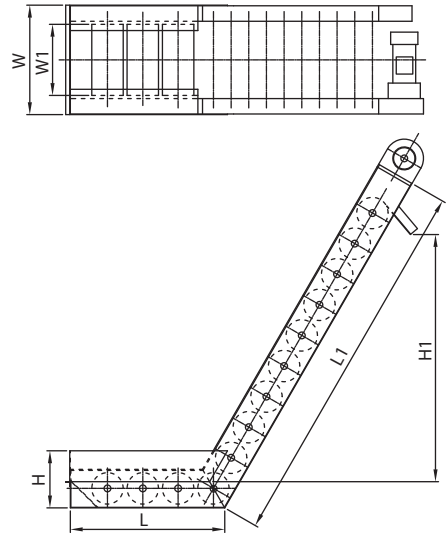
RCL

Specification

Model	Size	Capacity (ℓ/ Min.)	Dimension					Weight (KG)	
			L	W	H	L1	H1		W1
RCL-100	100	100	500	250	185	1150	900	200	110
RCL-200	200	200	735	250	185	1150	900	200	150
RCL-300	300	300	735	300	185	1150	900	250	195
RCL-400	400	400	980	350	185	1150	900	300	210

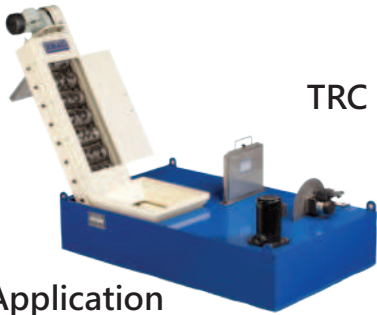
Unit(mm)

Dimension



COOLANT SYSTEM & L-TYPE MAGNETIC ROLLER CONVEYER

切削液冷卻系統 & L型磁性滾輪輸送機



TRC

Application

- Suitable for the removal of iron scraps on big size broaching machine, BTA deep hole drilling machine, machine centers and all kinds of machine tools etc.
- Used for conveying the punch workpiece.
- Designed for removing and conveying the iron scraps of FC material workpiece.
- Models with different specification and size can be custom-made.

用途

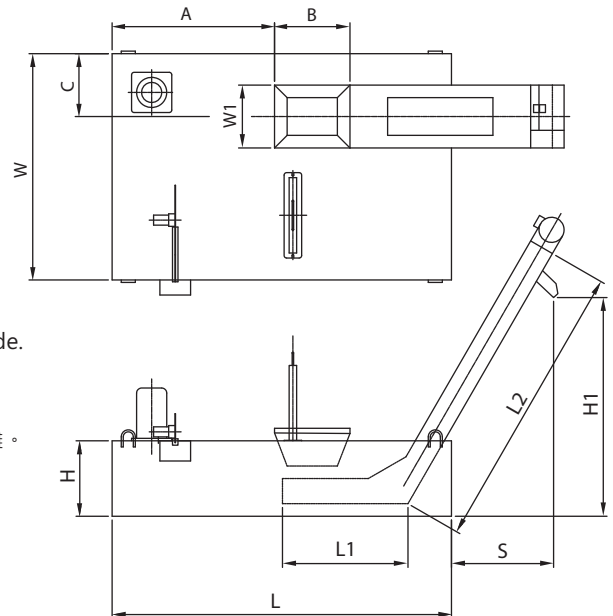
- 大型拉床、BTA深孔鑽孔機、切削中心機、專用機等切削屑搬送分離。
- 沖床作業、沖壓工件搬離輸送。
- 特別適用FC加工工件切削屑搬送分離作業。
- 本產品規格、尺寸可由客戶指定製作。

Specification

Model	Size	Capacity (ℓ/ Min.)	Body Dimension							Tank Dimension			Tank (ℓ)	Weight (KG)	
			W1	L1	L2	H1	A	B	C	S	W	L			H
TRC-A1	100	100	250	499	1149	870	196	300	250	340	1350	900	300	290	350
TRC-A2	100	100	250	499	1149	870	646	300	250	340	900	1350	300	290	350
TRC-B1	200	200	250	735	1149	870	210	300	250	340	1525	1150	300	420	500
TRC-B2	200	200	250	735	1149	870	585	300	250	340	1150	1525	300	420	500
TRC-C1	300	300	300	735	1149	870	410	300	300	340	1800	1350	350	700	650
TRC-C2	300	300	300	735	1149	870	860	300	300	340	1350	1800	350	700	650
TRC-D1	400	400	350	971	1149	870	324	300	350	340	2150	1500	350	900	750
TRC-D2	400	400	350	971	1149	870	974	300	350	340	1500	2150	350	900	700

Unit(mm)

Dimension



MAGNETIC SLIDE CONVEYER

磁性平板式輸送機



Feature

- ▶ Transport wet or dry ferrous chips, scraps or parts.
- ▶ Patent, self-adjusting system used for drive chain tension.
- ▶ Self lubricating for metal transmission chain.
- ▶ Not necessary to replace belt.
- ▶ Jam free operation by smooth surface.

Application

- The slide conveyer is applied for transmitting a wide variety of chips, scraps and parts in different industry.
- ▶ Automotive industry
- ▶ Metal working industry
- ▶ Recycling plants
- ▶ Scraps material processing
- ▶ Chemical industry
- ▶ Mining Industry
- ▶ Auto parts industry

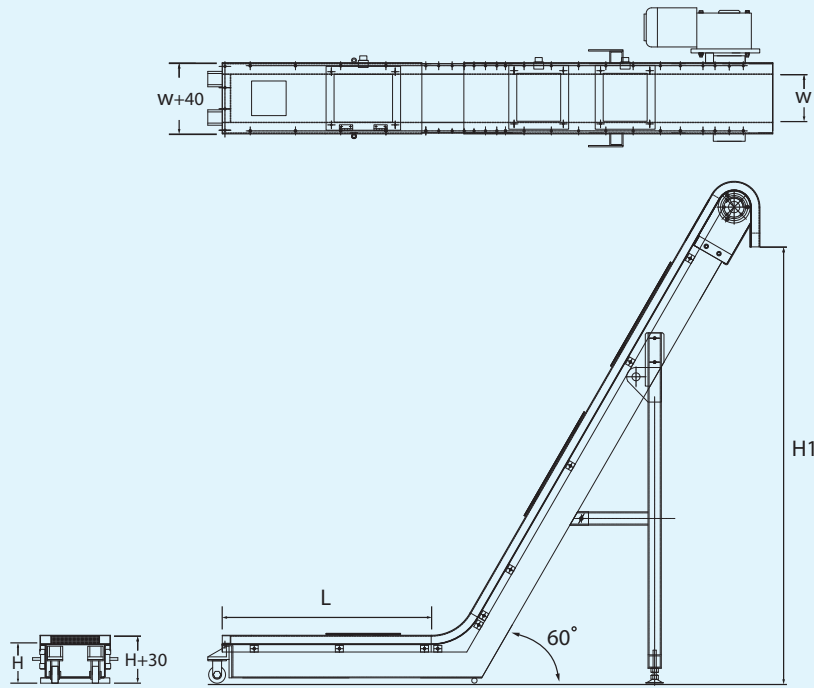
性能

- ▶ 不論乾性或濕性，含鐵質之切削、零組件皆可輸送。
- ▶ 可自行調整鏈條張力之專利系統。
- ▶ 可自行潤滑鏈條。
- ▶ 不需更換輸送版。
- ▶ 切削屑永不堵塞。

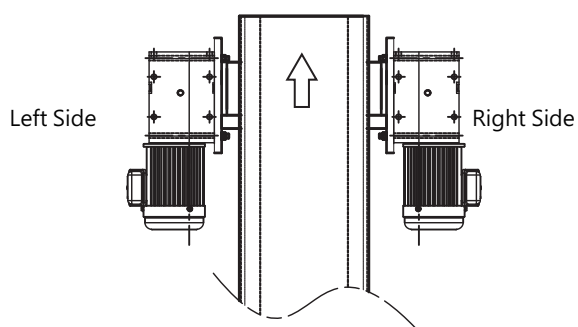
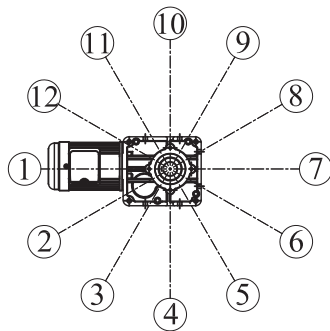
用途

- 磁性平板式輸送機可輸送各類型的鐵質切削屑、零組件，並用於以下不同產業。
- ▶ 自動化產業
- ▶ 金屬加工產業
- ▶ 資源回收產業
- ▶ 金屬切削處理
- ▶ 化學產業
- ▶ 礦業
- ▶ 汽車零組件產業

Dimension



Motor Direction



Standard Accessory

- Ⓛ Slide belt is made of stainless steel and permanent magnet assemblies.
- Ⓛ Heavy duty roller chain.
- Ⓛ Patent design, chain tension is adjusted automatically by self-control system.
- Ⓛ Heavy duty motor, reducer and bearing.

Optional Accessories

- Ⓛ Custom infeed hoppers and side guides
- Ⓛ Demagnetizer at discharge
- Ⓛ Leg supports and roller casters
- Ⓛ Special slide belt

Example



標準配備

- Ⓛ 不鏽鋼輸送面板與永久磁石
- Ⓛ 重負荷鏈輪
- Ⓛ 可自行調整鏈條張力之專利控制系統
- Ⓛ 重負荷馬達、減速機與培林

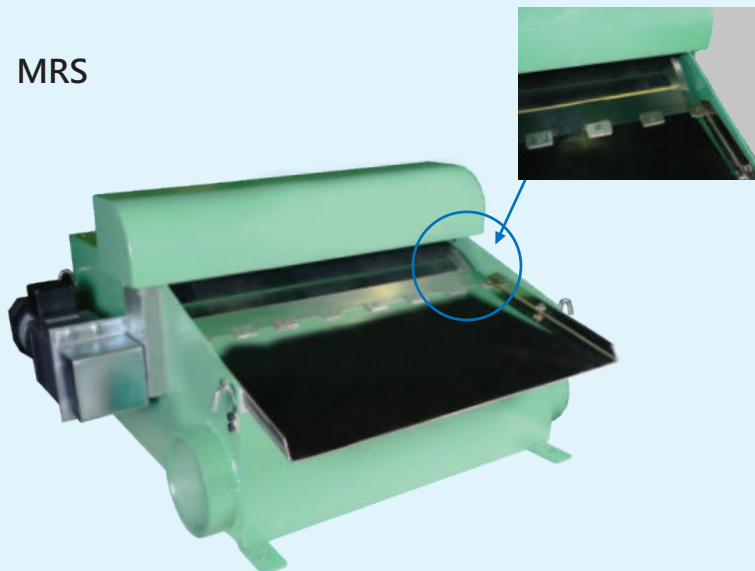
選購配備

- Ⓛ 集屑料斗與側導板
- Ⓛ 高效能脫磁機
- Ⓛ 輸送機支架與腳輪
- Ⓛ 特殊運輸面板

MAGNETIC ROLLER SEPARATOR

磁筒鐵粉過濾機

MRS



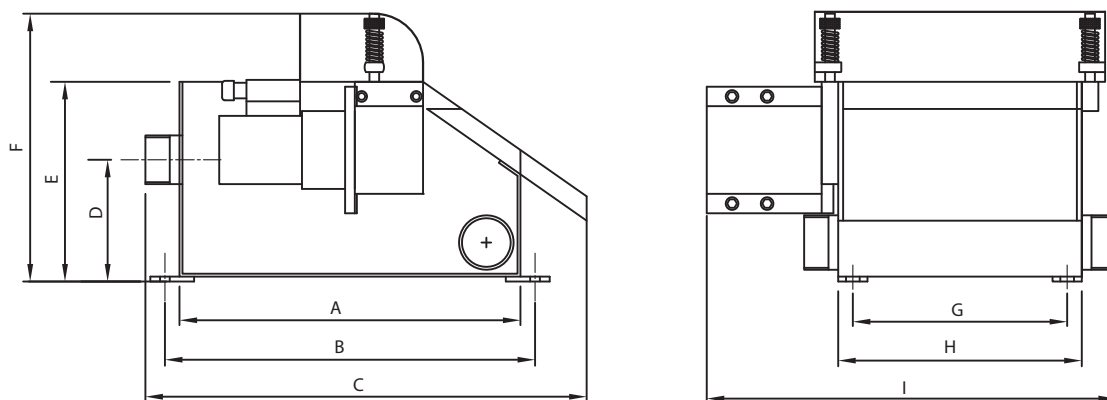
Application

- Suitable for cylindrical, centerless, surface & internal grinding machines, thread grinders, honing machines, rolling mills and EDM machines etc.
- Used as pre-filter along with other types of coolant filters, such as Paper Bed Filter Machine or Magnetic Conveyer etc.
- Ideal for the filtration of metalworking coolant oils, hone oils, cutting oils, quench oils for super hard alloy and quenched steel etc.

用途

- 應用於無心研磨機、平面研磨機、內外孔研磨機、搪磨機與放電加工機等。
- 可做為其他紙帶過濾機或磁性分離輸送機的預濾器。
- 可過濾切削液、研磨液、淬火油等中的雜質。

Dimension



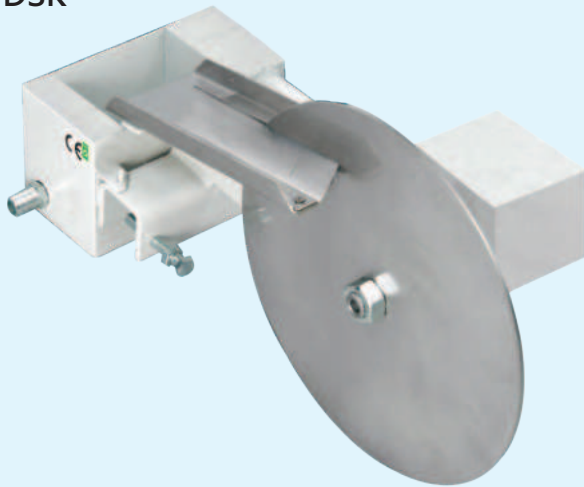
Specification

Size		Unit(mm)											
Model	Disposal Capacity (ℓ/ Min.)	A	B	C	D	E	F	G	H	I	Inlet	Outlet	Motor
MRS-80	Max.80	350	380	485	170	230	310	170	200	370	2"	2"	25W
MRS-100	Max.100	350	380	485	170	230	310	220	250	420	2"	2"	25W
MRS-120	Max.120	500	530	700	170	255	350	220	250	420	3"	3"	90W
MRS-170	Max.170	500	530	700	170	255	350	270	300	470	3"	3"	90W
MRS-220	Max.220	500	530	700	170	255	350	320	350	520	3"	3"	90W
MRS-280	Max.280	450	480	585	170	230	310	370	400	570	3"	3"	90W
MRS-300	Max.300	550	580	700	170	280	375	370	400	570	4"	4"	90W
MRS-350	Max.350	500	530	630	160	230	310	470	500	670	4"	4"	90W
MRS-400	Max.400	600	630	800	170	280	375	470	500	670	4"	4"	200W
MRS-450	Max.450	600	630	735	160	230	310	570	600	770	4"	4"	90W
MRS-550	Max.550	700	730	900	170	280	375	570	600	770	4"	4"	200W
MRS-800	Max.800	630	730	880	200	300	550	1050	1200	1400	5"	5"	1/2HP
MRS-1000	Max.1000	750	800	950	225	350	650	1450	1500	1700	6"	6"	1HP

DISK OIL SKIMMER

盤式油水分離機

DSK



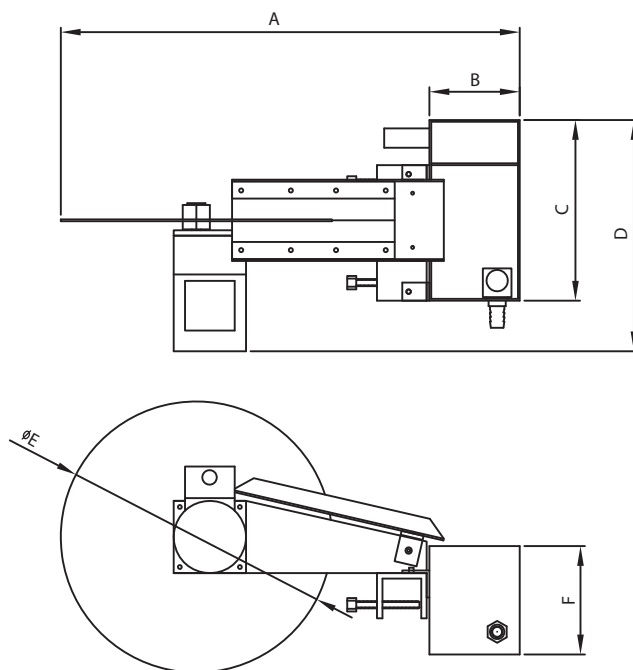
Application

- ▶ Extend metalworking coolant life time.
- ▶ Used to reduce fluid disposal costs from coolant and return clean coolant to sump.
- ▶ Unbreakable stainless disks with a life time guarantee.

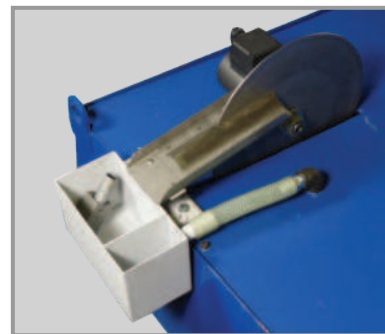
用途

- ▶ 增加切削液使用壽命。
- ▶ 有效刮除切削液之浮油浮渣等雜質。
- ▶ 不鏽鋼製轉盤擁有更長使用壽命。

Dimension



Example



Specification

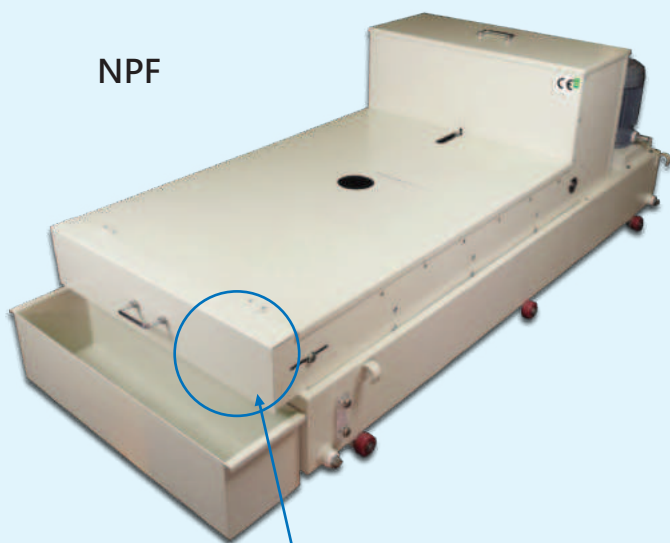
Size Model	Disposal Capacity (ℓ/ Min.)	A	B	C	D	F	ØE	Inlet	Outlet	Driving Motor
DSK-40	30~40	510	100	200	260	120	300	3/4"	3/8"	25W
DSK-50	40~50	560	100	200	260	120	400	3/4"	3/8"	25W
DSK-60	50~60	660	100	200	260	120	500	3/4"	3/8"	25W

Unit(mm)

PAPER BED FILTER MACHINE

紙帶過濾機

NPF



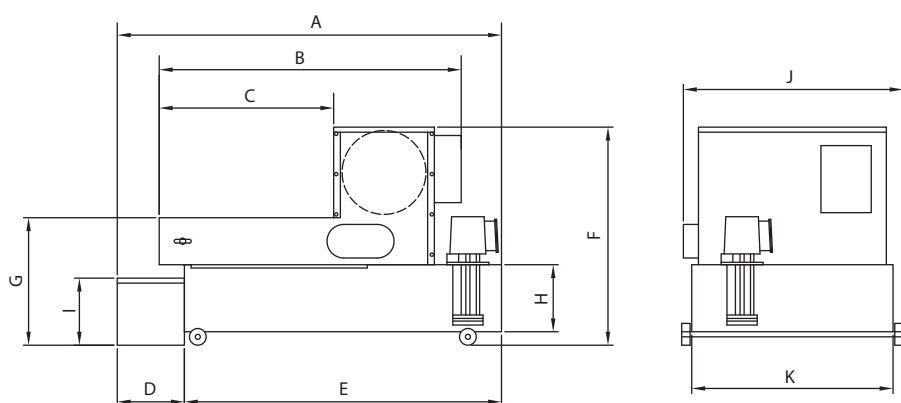
Application

- Ⓛ Separation of ultrafine particles in pure containers.
- Ⓛ Deep filter-bed, long dryer distance for sludge transfer without paper jam.
- Ⓛ Filter paper fed automatically by reliable level control.
- Ⓛ Suitable for the removal of ferrous & non-ferrous metals, organic & in-organic material, such as glass, rubber and plastic material.
- Ⓛ Used for surface grinding machine, inner/outer center grinding machine, centerless grinding machine and EDM machine etc.

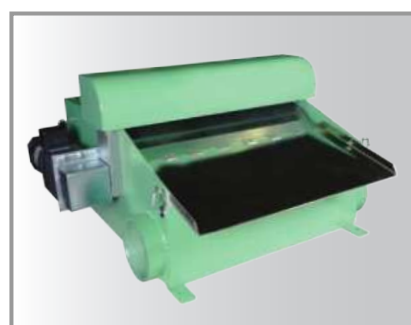
用途

- Ⓛ 用於過濾極小微粒的雜質，確保冷卻液品質。
- Ⓛ 較長的輸送距離確保過濾紙有效乾燥，而無卡紙問題發生。
- Ⓛ 可用於過濾且過濾鐵質與非鐵質，有機與非有機雜質，例如玻璃、橡膠與塑膠等。
- Ⓛ 應用於平面研磨機、內外孔研磨機、無心研磨機、搪磨機與放電加工機等。

Dimension



Optional Accessory



Magnetic Roller Separator For Paper Bed Filter Machine

Specification

Size Model	Tank Capacity (ℓ)	Disposal Capacity (ℓ/Min.)	A	B	C	D	E	F	G	H	I	J	K	Pump
NPF-40	110	Max.40	1150	970	530	200	950	660	400	190	200	665	600	1/8HP
NPF-80	140	Max.80	1380	1200	760	200	1180	660	400	190	200	665	600	1/4HP
NPF-120	230	Max.120	1030	1400	910	200	1430	660	400	190	200	865	800	1/2HP
NPF-160	300	Max.160	1880	1650	1210	200	1680	740	480	270	200	865	800	3/4HP
NPF-220	400	Max.220	1930	1650	1210	250	1680	740	480	270	250	1065	1100	1HP
NPF-300	500	Max.300	1230	1500	1500	250	1980	740	480	270	250	1065	1100	1HP

Unit(mm)

COMPACT BAND FILTER MACHINE

輪式紙帶過濾機

CB



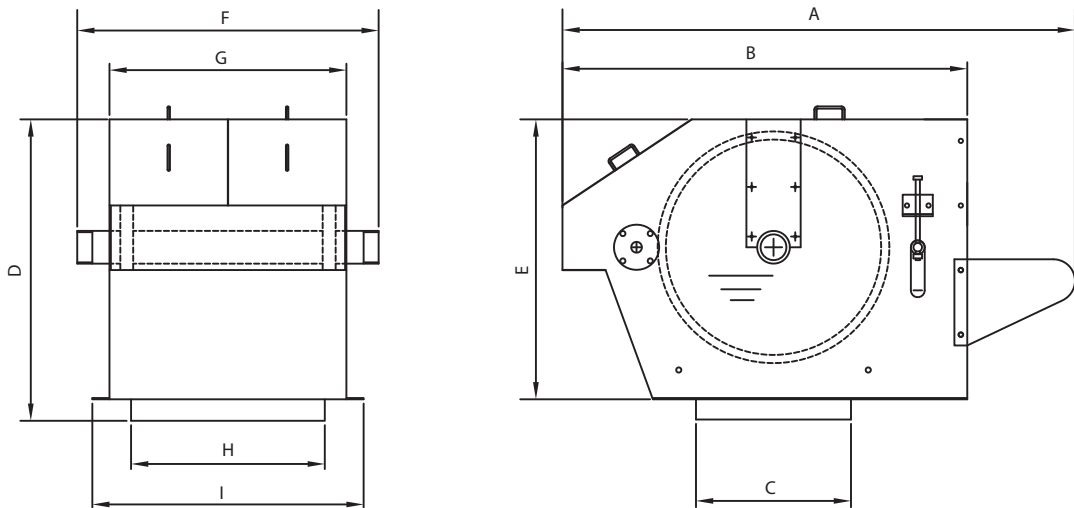
Application

- ⌚ The system requires up to 80 percent less space than a flat-band filter without any restrictions in terms of filtration output and indeed, with greater cleaning efficiency.
- ⌚ The high hydrostatic pressure produced in this way helps to ensure that the filter paper is used with maximum efficiency.
- ⌚ Enable to treat between 200 to 1000 liters of neat oil or water-based emulsions per minute containing both metallic and non-metallic particles.
- ⌚ Used for surface grinding machine, inner/outer grinding machine, honing machine, centerless grinding machine, EDM machine & laser engraving machine etc.

用途

- ⌚ 相較臥式紙帶過濾機可有效節省最多達80%的空間。
- ⌚ 強勁水壓可確保過濾紙更有效率的使用，而不造成浪費。
- ⌚ 可有效處理每分鐘流量達200-1000公升的切削液與研磨液等。
- ⌚ 應用於平面磨床、內外孔磨床、拋光機、搪磨機、放電加工機與雷射雕刻機等。

Dimension



Specification

Size Model	Disposal Capacity (ℓ/ Min.)	A	B	C	D	E	F	G	H	I	Inlet	Filter Paper Width(cm)	Driving Motor
CB-250	Max.250	1190	940	360	700	650	700	570	450	630	80A	500	1/4HP
CB-350	Max.350	1190	940	360	700	650	900	770	600	830	80A	700	1/4HP
CB-450	Max.450	1370	1120	450	900	850	900	770	600	830	100A	700	1/4HP
CB-550	Max.550	1370	1120	450	900	850	1200	1070	950	1130	100A	1000	1/4HP
CB-800	Max.800	1450	1200	450	950	900	1200	1070	950	1130	100A	1000	1/4HP
CB-1000	Max.1000	1830	1200	450	950	900	1600	1470	1350	1530	100A	1400	1/2HP

Unit(mm)

FULL AUTOMATIC STAINLESS CYCLONE FILTER MACHINE
全自動不鏽鋼鑄造渦流式過濾機



Custom-made



High Accuracy

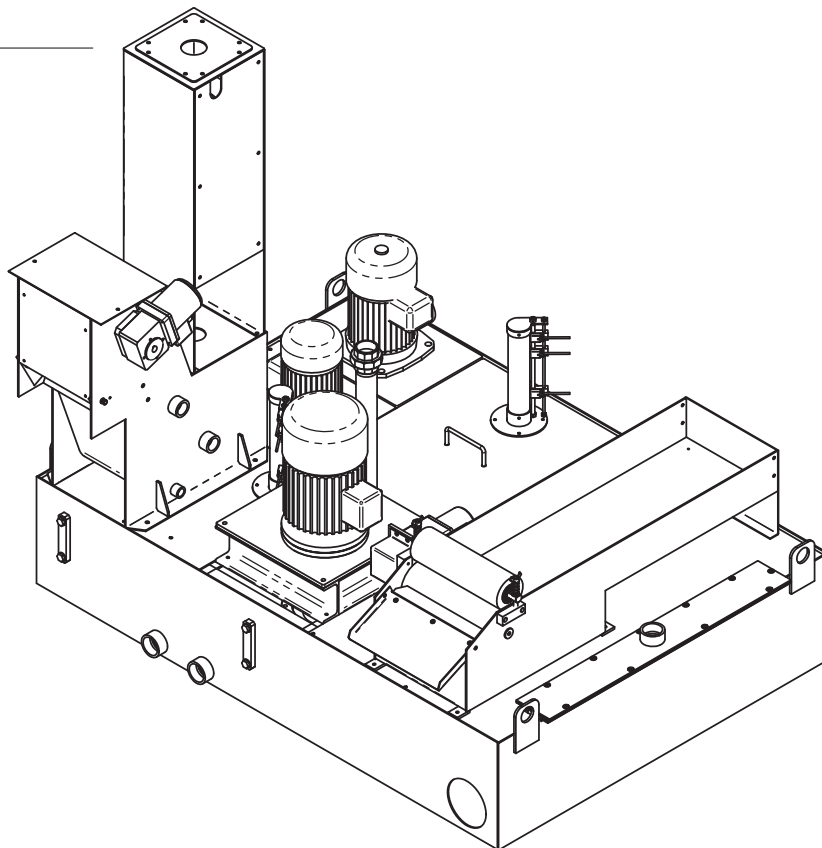


No Industrial Waste



Stainless Steel

Example



Feature

- Special design of construction requires neither filter replacement, nor disposal of industrial waste.
- High filtration performance. Under certain operating conditions, filtration performance could reach 99% for 25 μm of non-magnetic/magnetic scraps and over 90% for 10 μm of non-magnetic/magnetic scraps.
- No foams and bubbles. To reduce a mixture of coolant and air, it guarantees working environment without the pollution of foams and bubbles.
- The material for system is made out of stainless steel to guarantee long-time operation and anti-wear-out. Suitable for industrial water, coolant water and solvent.

Application

- Used to filter out the tiny cutting chips and abrasive scraps from coolant water/oil in EDM, Wire-EDM, grinding machine, CNC milling machine and M/C.
- Used to filter out the burrs and minute powders from circulated cleaning liquids in ultrasonic and high pressure industrial washing machine.
- Categorizing and classifying crystals or specific components in chemical, pharmaceutical and food production process.

Specification

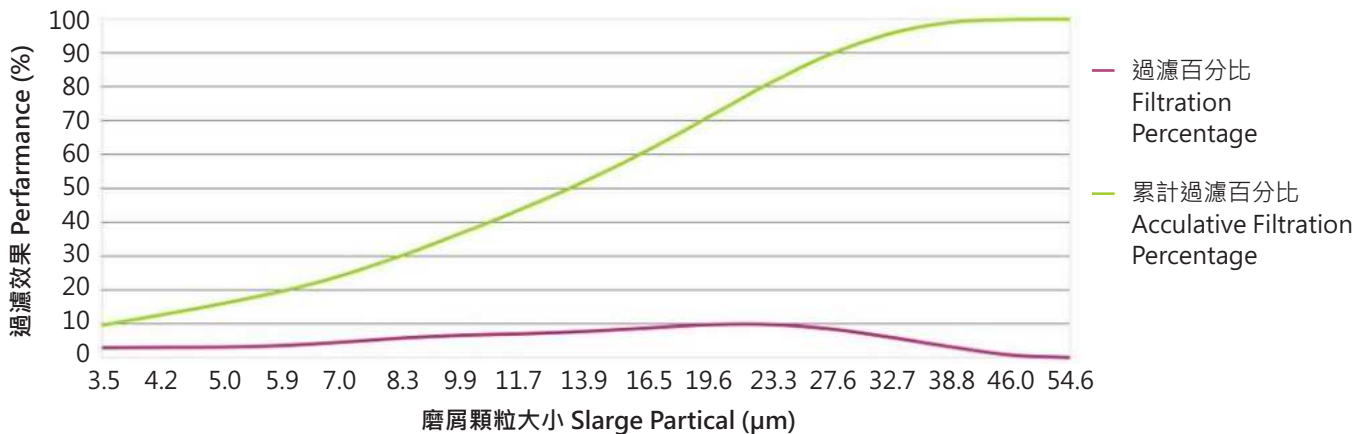
特性

- 無須更換濾心且無事業廢棄物。
- 經SGS等級實驗室進行測試，並提供測試報告，具高效能過濾效果。25 μm 以上雜質，可達99%過濾效果，10 μm 以上雜質，可達90%之過濾效果。
- 本體與零件均為不鏽鋼鑄造件，具有耐酸鹼、耐磨耗與抗酸鹼等特性，可運用在冷卻液、化學藥劑之過濾。
- 全自動過濾冷卻液中之雜質，並且自動運送排出集屑箱中之積存金屬屑，無須人工清除。
- 集屑箱中較為乾淨的冷卻液，自動進行二次過濾。
- 當冷卻液與空氣混合時，不會產生泡沫造成環境汙染。

用途

- 可用於過濾放電加工機、線切割機、研磨機、CNC等各類型加工機。
- 可用於超音波洗淨機、高壓清洗機等清洗設備。
- 可運用在化學藥劑清洗、製藥與食品業等。
- 可運用於電子產業、光學產業等。

研磨液過濾效果 Grinding Coolant Filtration Efficiency



Example



Grinding Machine



Wire-Cutting EDM



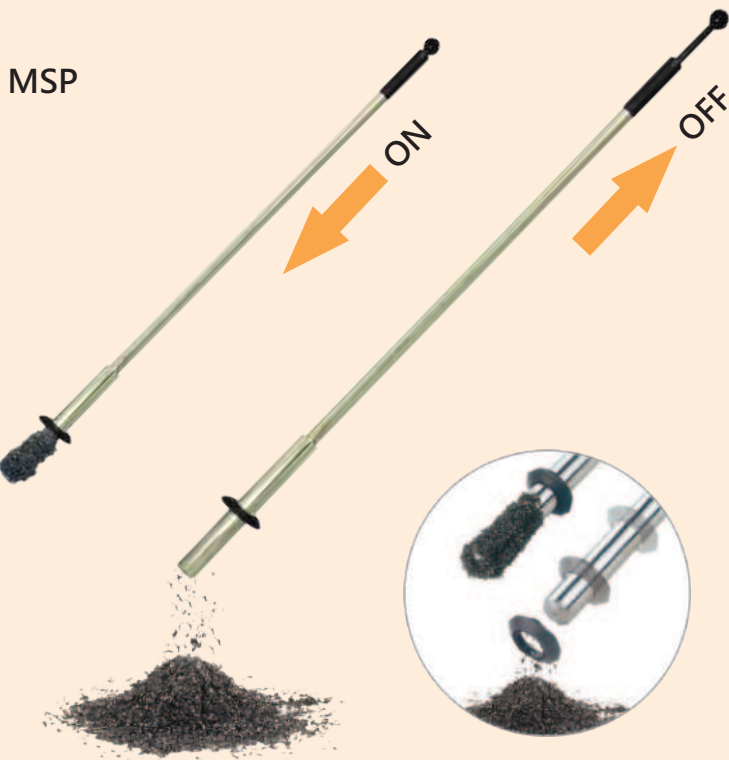
Milling Machine



Ultrasonic Washing Machine

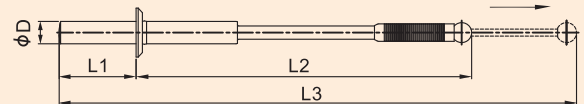
MAGNETIC REMOVER

鐵屑清除棒



PAT.123230

Dimension



Specification

Model	Size ØD	Dimension			Unit(mm)
		L1	L2	L3	Weight (KG)
MSP-600S	32	120	480	760	0.9
MSP-900S		120	780	1060	1.2
MSP-1200S		160	1040	1400	1.6

Example



Lathes Machine



Machining Center



Gear Hobbing Machine



Grinding Machine

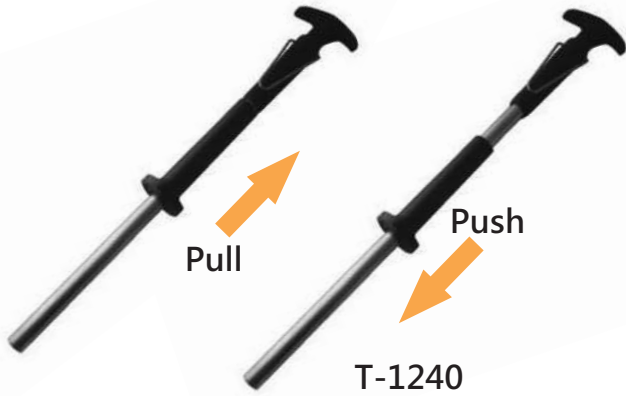
Application

- For removing metal chips left on lathes machines, milling machines, slotting machines, broaching machines, sawing machines and gear hobbing machines.
- Used for parts detection and classification in surface treatment industry, such as electroplating and press machine.
- For removing iron scraps left in the cutting fluid troughs or water troughs of grinding machine and other similar machines.

用途

- 各式車床、銑床、插床、拉床、鋸床、滾齒機等機械台鐵屑清除。
- 衝床、電鍍、染黑等表面處理業零件撿取分類。
- 研磨機等切削油槽、水槽鐵粉清除。

MAGBAR T槽除屑棒



Example



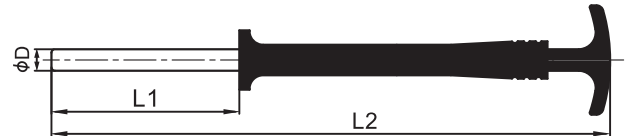
Application

- ☞ Suitable for T-Slot and the holes of workpiece to remove the metal scraps.

用途

- ☞ 適用床台T型槽，鐵屑清除。
- ☞ 工件加工孔內，鐵屑清除。

Dimension



Specification

Model	Size	Dimension		Weight
	ØD	L1	L2	(KG)
T-1240	12.5	180	400	0.4

Unit(mm)

MAG HOLDERS 手安全器



Application

- ☞ Improve security, easy to operation and no maintain cost.
- ☞ For picking up or moving the work pieces on press machine.

用途

- ☞ 增加安全性，易於操作，並無維修成本。
- ☞ 適用於衝床作業，工件成品搬送。

Example



Specification

Model	Length (mm)	Holding Capacity (kg)	Weight
			(g)
MA-1	240	1.5	135
MA-2	240	2	155
MA-3	240	3	220
MA-5	330	5	350

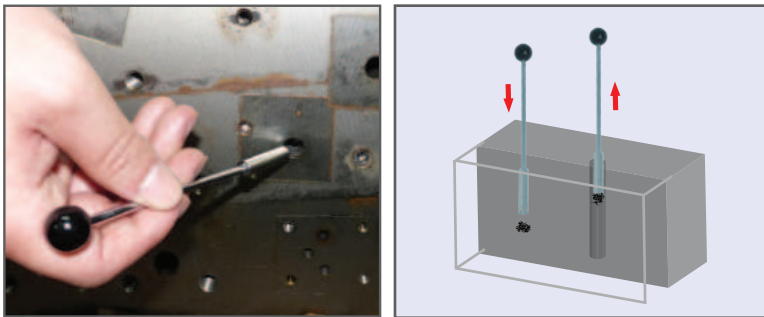
Unit(mm)

BLIND HOLE MAGNETIC REMOVER 盲孔鐵屑清除棒

MSP



Example



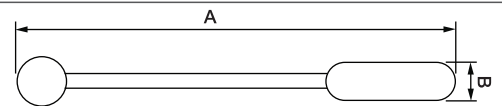
Application

- Magnetic head is covered by hardened metal. The black Knob-Ball is attached to pull rod of MSP-5, MSP-8 and MSP-11, MSP-1.6 and MSP-3 are offered without black Knob-Ball.
- Suitable for the removal of iron scraps in blind holes, drilling holes, tapping holes or reachless places.

用途

- 磁鐵頭是以堅硬金屬外殼包覆，內藏永久磁鐵。其中 MSP-5, MSP-8 及 MSP-11 尾端附黑球；至於 MSP-1.6 與 MSP-3 則位附黑球拉桿。
- 攻牙、鑽孔時所產生的鐵屑，或是太深、太窄以致難以清除的位置，均可使用盲孔鐵屑清除棒。
- 盲孔內的鐵屑可輕易清除。

Dimension



Specification

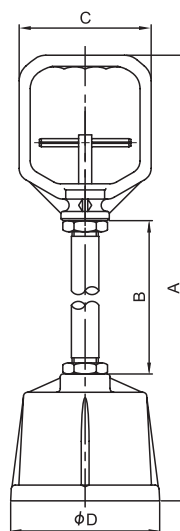
Model	A	B	Unit(mm)	
			Weight (kg)	
MSP-1.6	68	8	0.020	
MSP-3	102	11	0.038	
MSP-5	133	5	0.024	
MSP-8	158	8	0.032	
MSP-11	175	11	0.048	

MAG HANDLER 磁性手提吸鐵器

HMC



Dimension



Specification

Model	Size ØD	Dimension			Unit(mm)	
		A	B	C	Weight (KG)	
HMC-300	114	295	70	100	1.1	
HMC-600		590	365	100	1.6	

Application

- Suitable for removal of iron scraps on the machine or floor around the machine.
- Suitable for the segmentation or sorting of magnetic and non-magnetic materials in die-casting, plastic and metal working industries.

用途

- 適用於機械床台，地面週邊散落鐵屑清除。
- 適用於鑄造、塑膠、金屬加工業，磁性、非磁性材料磁選分離。

Example



MAG PEN
磁性伸縮棒

Example



MSB



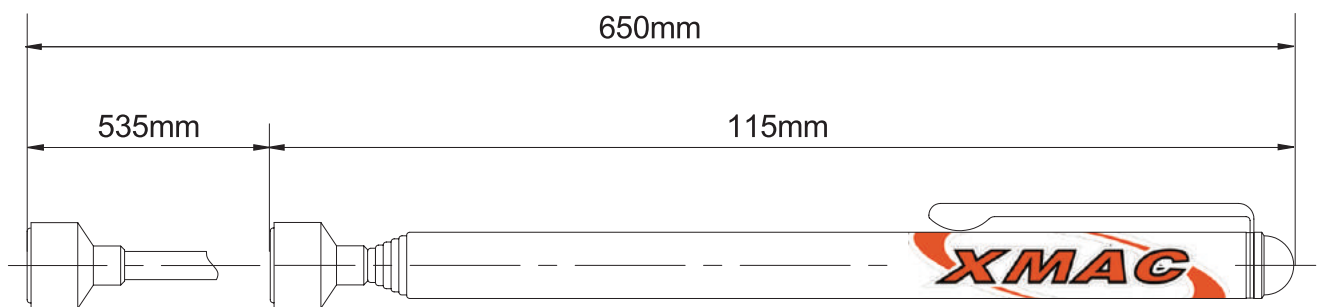
Application

- Used for picking up the hand tools or hardware and removing the iron scraps in the holes of workpiece.
- Suitable for a power panel, auto or machinery repair industry, office and house.

用途

- 配電盤、汽車修理、機器維修、辦公室、住家場所、五金零件、工具撿取。
- 加工零件孔內鐵屑清除。

Dimension



Specification

Size	Dimension	Hold Capacity	Weight (g)
Model MSB-150	Min.135/Max.650	Max.1.8kg	66

Unit(mm)

MAGNETIC CLEANER

油槽除屑器



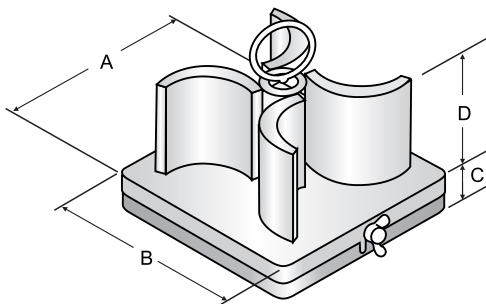
Application

- ④ Hydraulic power unit.
- ④ Circulating lubrication oil tank.
- ④ Oil troughs of wire-cut machines and EDMs.
- ④ Oil troughs and water troughs of washers and oil purifiers.

用途

- ④ 液壓動力油箱。
- ④ 潤滑循環油箱。
- ④ 線切割機、放電加工機。
- ④ 洗淨機、油淨化機...等。

Dimension

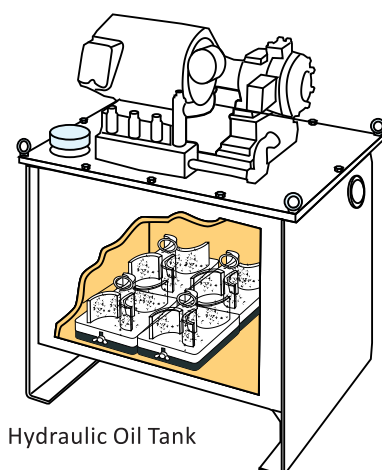
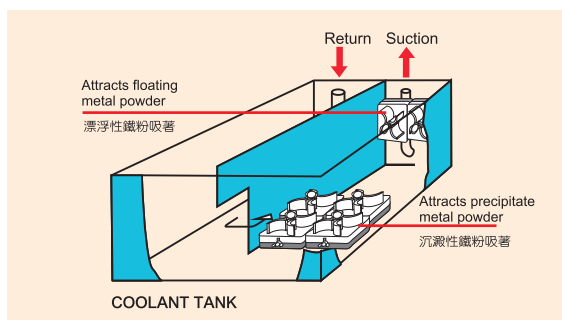


Specification

Model	Dimension				Flux Density	Body Color	Weight (KG)
	A	B	C	D			
MSR-100	110	110	20	42	800Goe	Black	0.6
MSR-300	110	110	20	42	3000Goe	Red	0.75

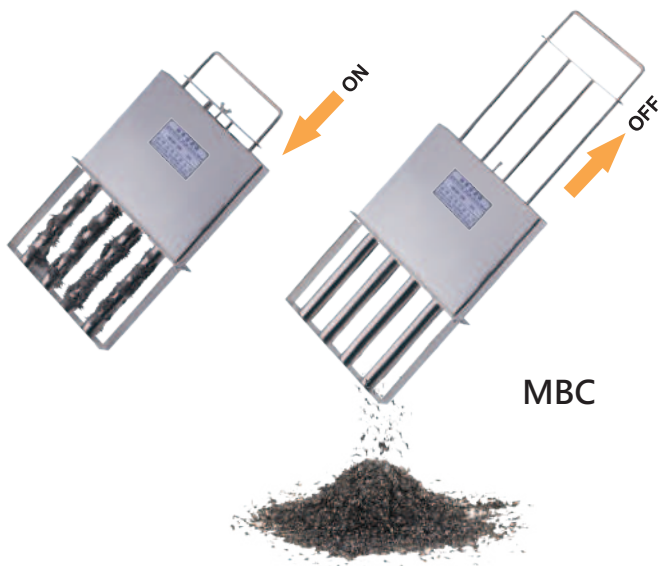
Unit(mm)

Example



MAGNETIC GATE CLEANER

磁性閘門過濾器



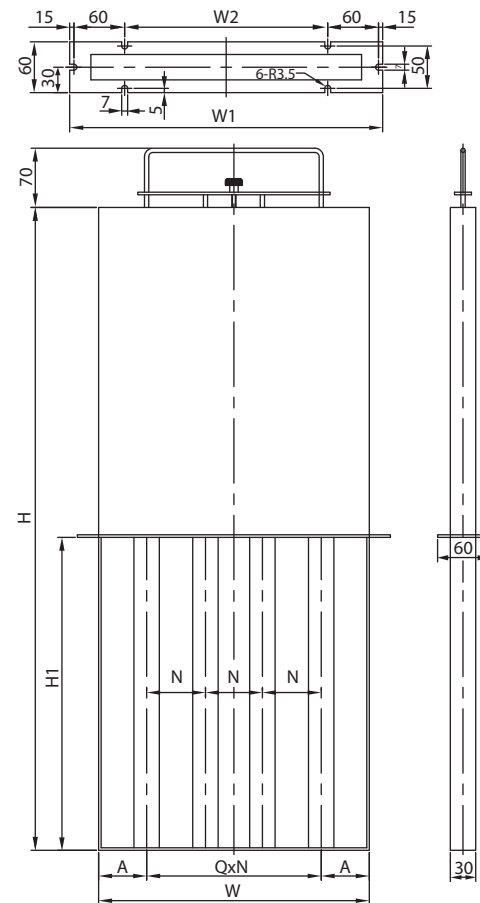
Application

- For attracting metal iron powders left in the cutting-fluid tanks of machine tools, such as machining centers, CNC lathes, EDMs and wire-cutting machines.
- Models with different specifications and sizes can be custom-made.

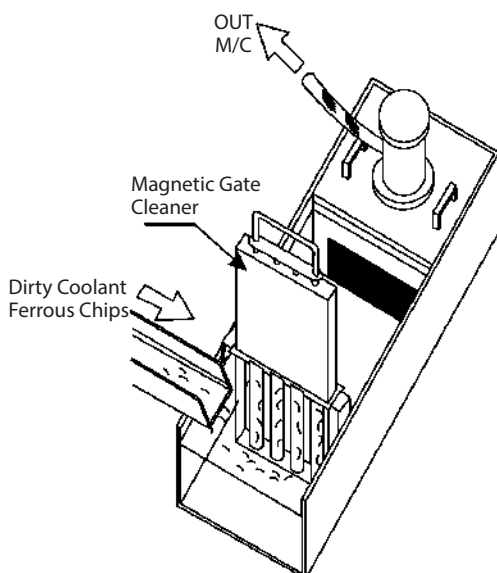
用途

- 切削中心機·CNC車床·放電加工機·拉床線切割機等工具機·切削油槽鐵粉吸著。
- 本產品規格、尺寸可由客戶指定製作。

Dimension



Example



Specification

Model	Size		Dimension				N Pitch	Q Bar Q'TY	Unit(mm)	
	A	H	H1	W	W1	W2			Weight (KG)	
MSR-201604	32.5	340	160	200	250	100	45	4pcs	3.3	
MSR-202504	32.5	520	250	200	250	100	45	4pcs	5.1	
MSR-323006	35	620	300	320	370	220	50	6pcs	8.6	
MSR-323706	35	760	370	320	370	220	50	6pcs	12.3	

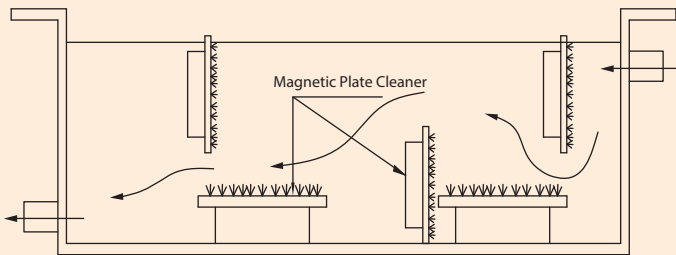
MAGNETIC PLATE CLEANER

磁性板式過濾器

23456



Example



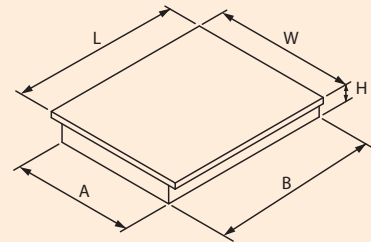
Application

- Used to remove ferrite scrapes in lubricating oil and coolant tank, hydraulic tank and pressure lubrication system.

用途

- 冷卻、潤滑油箱、液壓油箱、清洗機等設備，鐵粉過濾清除。

Dimension

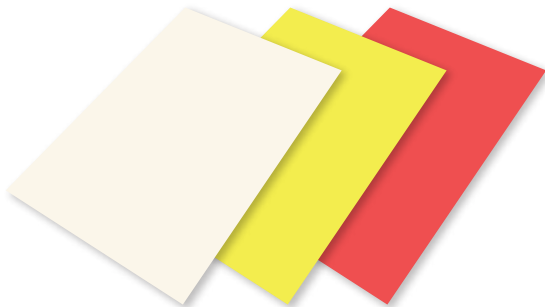


Specification

Model	Dimension					Unit(mm)
	A	B	W	L	H	Weight (KG)
JPMC-1020	100	200	120	230	42	1.07
JPMC-1515	150	150	170	170	42	1.13
JPMC-1530	150	300	170	330	42	2.02
JPMC-2025	200	250	230	280	42	2.20
JPMC-2030	200	300	230	330	42	2.58

MAGNET SHEET

軟性磁鐵



Example



Application

- Used for materials and production management, such as Marking Storage Rack.
- Suitable for advertising specialties, such as Signage, Sales Promotions, Toys, Premiums, Automobile Paint Masking, P.O.P. Displays.
- Easy to modify in different shapes and sizes by scissors or utility knife.
- Certificated by CE(EN71-3) and RoHS.

用途

- 運用於物料管理及生產管理，如料架卡。
- 運用於廣告貨展示用途。
- 可輕易用剪刀或美工刀剪裁出合適的尺寸。
- 符合CE(EN71-3)及RoHS規範。

Specification

Model	Size	Unit(mm)		
	Length	Width	Color	
MGS-30.10	300	100	White	
MGS-30.20	300	200	White	

Customized Available

SMART MAGTRAY

磁性零件盒



SMT-150

SMT-250

Application

- ▶ Used to hold tools or hardware in auto repair factory, machine factory etc.
- ▶ Suitable for office and kitchen to hold stationary and house hardware.

用途

- ▶ 汽、機車保養場、機器工廠、工具、五金零件放置。
- ▶ 辦公室、家庭、廚房、文具、工具放置。

Specification

Model	Dimension	Holding Capacity (kg)	Unit(mm)	
			Weight (g)	
SMT-150	Ø150xH30	2.5	365	
SMT-250	L240xW140xH30	5	730	

Example



CENTER DRILLING MACHINE

中心孔鉗孔機

DH-350



Example



Application

- ▶ Suitable for drilling center hole before the lathe process.
- ▶ Application for a wide clamping range of outer diameter from Ø30 to Ø350.

用途

- ▶ 適用於車床加工前，棒材中心孔鑽孔。
- ▶ 夾持範圍大，外徑從Ø30 ~ Ø350都可適用。

Specification

Model	Power	Holding DIA (Max)	Center Hole	Unit(mm)	
				Weight (kg)	
DH-350	450W.110V	Ø350mm	MaxØ13mm	20	

DEMAGNETIZER 脫磁器

DMC-40



Application

- ⌚ To demagnetize the drills and mills during the Processing.
- ⌚ To demagnetize the inspection equipment and measuring equipment.
- ⌚ Suitable for demagnetization of the workpiece.

用途

- ⌚ 消除鑽頭、銑刀等在加工過程中產生磁性。
- ⌚ 檢側、量測工具所附著磁性也可快速消除。
- ⌚ 加工工件消除磁性也可使用。

Example



Warnings

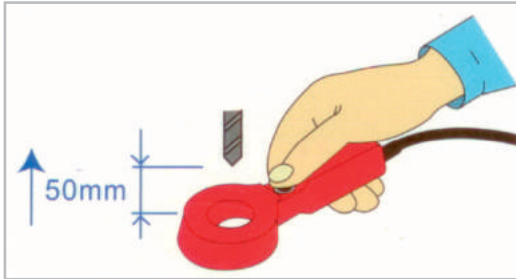
- ⌚ Keep away from flammable materials to avoid air explosions or fire.
- ⌚ Observe the operation frequency rules to avoid the overheating.
- ⌚ Environmental temperature should not exceed 80°C.
- ⌚ Forbid impacting or attacking during operation.
- ⌚ Keep away from precision instruments and electronic equipment at least 1M.

注意

- ⌚ 操作時必須遠離易燃物質，防止產生氣爆、引起燃燒。
- ⌚ 嚴格遵守操作頻率說明，防止產生過熱。
- ⌚ 使用過程中嚴禁敲擊。
- ⌚ 具有強力磁性，切勿靠近電子設備、醫療儀器。

Operation Instruction

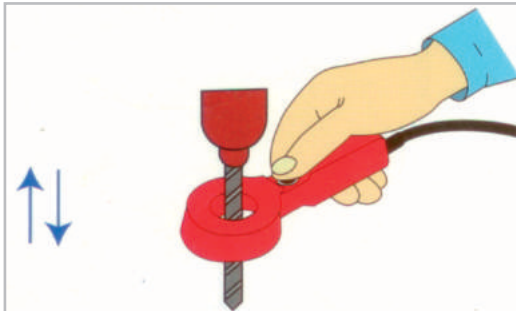
Step 1



1. Put the demagnetizer under the cutting tool by 50mm and press the switch button for the operation (The gravitation will occur when the button is pressed; the handle of the demagnetizer must be held tightly).

1. 將脫磁器至於刀具下方50mm以上，再按下押扣開關進行操作。(押扣開關按下時會產生吸引力，必須握緊脫磁把手)

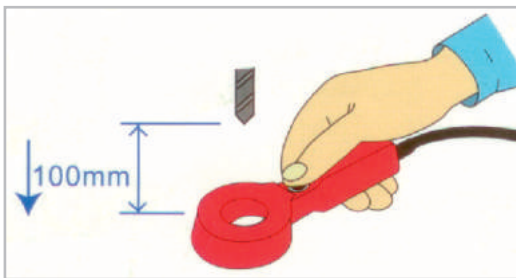
Step 2



2. After pressing the switch button, move the demagnetizer on two ends of cutting tools for 2-3 times (The operation time is about one minute).

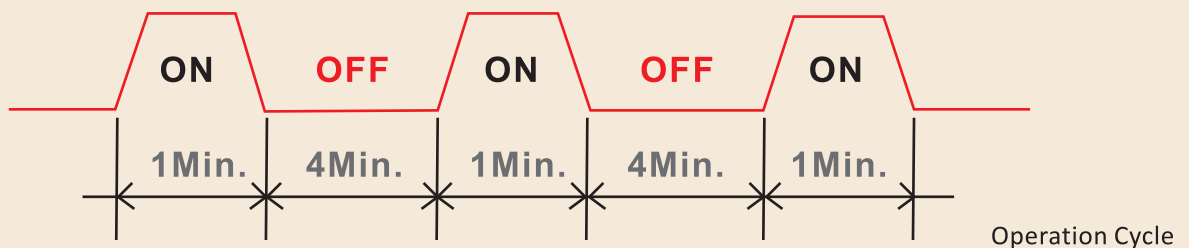
2. 按下押扣開關後，將脫磁器再刀具兩端來回2~3次，即可將附著之磁性消除。(動作時間在1分鐘以內)

Step 3



3. Release the switch button of the demagnetizer, when the demagnetization is completed. The demagnetizer must be kept away from the cutting tools by 100mm.

3. 脫磁動作完成，脫磁器必須遠離刀具100mm以上，才可將押扣開關釋放，避免再著磁可能。



Specification

Model	Power Source	Apparent Power	RMS Volume	Demagnetizing Dia	Weight (kg)
DMC-40	AC 110V/220V 50Hz/60Hz	75VA	60W	Ø40mm	0.9

Features

- Small size, light weight and easy to operate.
- No need to dismantle the drills and mills installed on the machine and enable to improve the production efficiency.

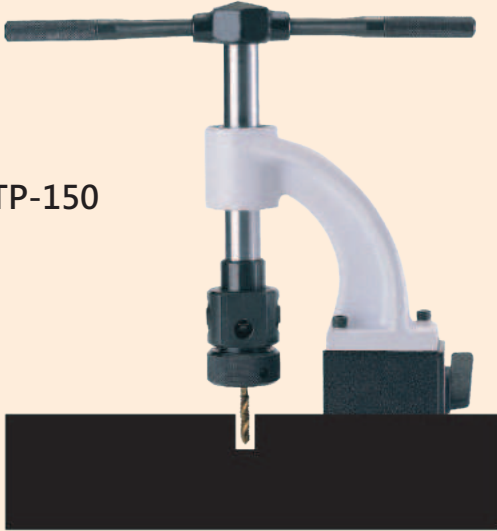
用途

- 體積小、重量輕、操作簡單。
- 裝置在機械之鉗頭、銑刀等不需取下，即可操作使用，提高生產效率。

MAGNETIC TAPER

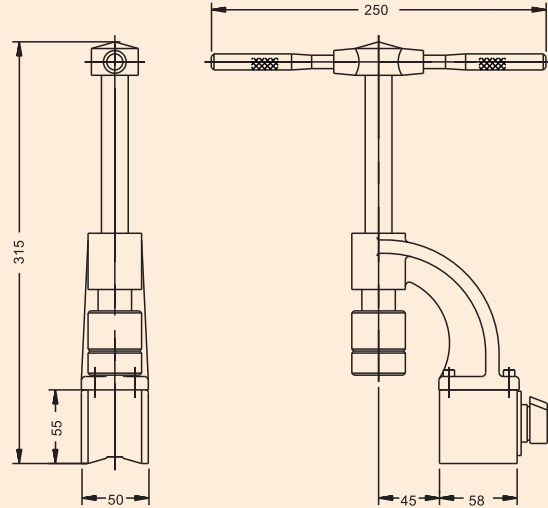
磁性攻牙機

MTP-150



Dimension

Unit(mm)



Application

- Suitable for taping the holes on the surface and sides of various machines.

Features

- Lightweight, easy to operate and convenient to carry.
- Guide bar design helps to position the tap and holes precisely.
- Even force-delivering during operation prevents the tap from breaking, reducing tool wear and lowering processing cost.
- Quick chuck enables the tap to be loaded and unloaded quickly.
- No maintain cost for powerful permanent-magnetic base.

Example



用途

- 適用於各種金屬磁料機床平面、側面之孔位攻牙。

特性

- 外型輕巧，操作簡單，攜帶方便。
- 採用導桿設計，絲攻和孔位快速正確定位。
- 操作出力均衡，避免絲攻折斷，減少刀具損耗，降低成本。
- 使用快速夾頭，絲攻拆裝快速簡單。
- 強力永磁磁性座，不需維修成本。

DEBURRING MACHINE

立式毛頭研磨機



JB-612

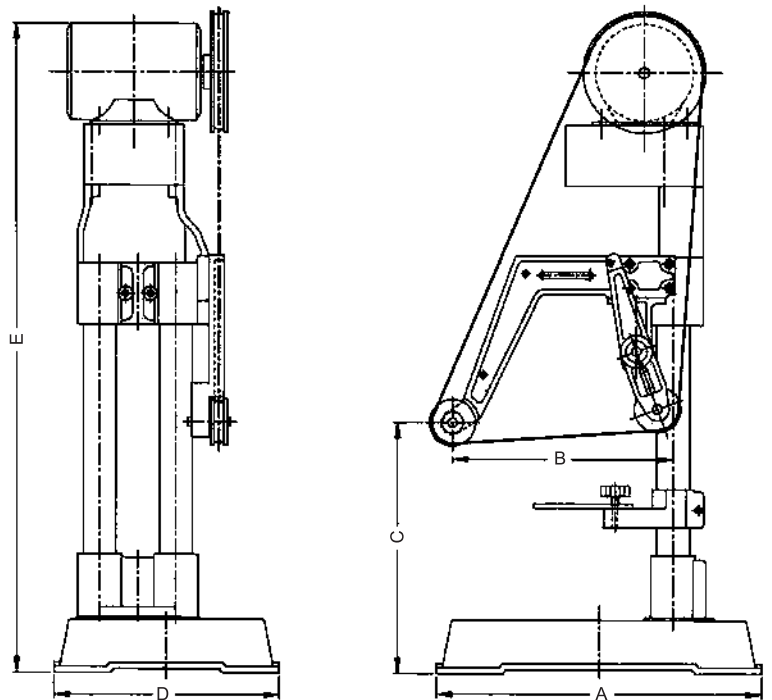
Application

- ▶ Put the workpiece upward and easy to check the working surface.
- ▶ Suitable for the workpiece in irregular shapes, such as de-waxing, forging, casting, pressing and machining.
- ▶ Ferrous metal, non-ferrous metal, wood and plastics are available.
- ▶ Lightweight, easy to operate and install.

用途

- ▶ 工件加工面朝上，目視可檢查加工面。
- ▶ 弧形、凹凸形等異形工件，如脫蠟、鍛造、壓鑄、沖床等加工件特別適用。
- ▶ 鐵金屬、非鐵金屬、木材、塑膠、電木等皆可使用。
- ▶ 外型輕巧，操作簡單，固定容易。

Dimension



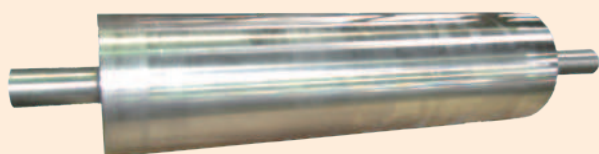
Example



Specification

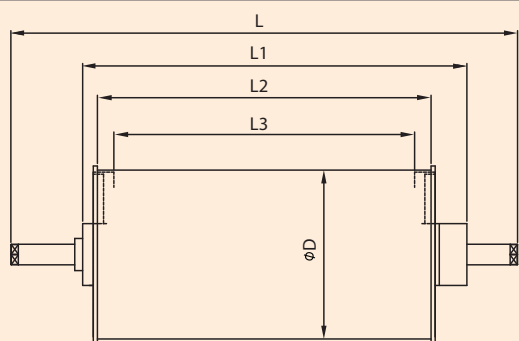
Model	Power	Grinding Belt	Dimension					Unit(mm)
			A	B	C	D	E	Weight (g)
JB-612	1/4HP 1Phase/3Phase 110V/220V	1/4" x60" 1/2" x60"	425	288	326	295	847	43

PERMANENT MAGNET DRUM 永磁轉筒



FDA

Dimension



Application

- ☞ Suitable for the separation of ferrite scrapes from powder material, such as food industry, mining industry, chemical industry and powder production industry etc.
- ☞ For removing and separating magnetic and non-magnetic powder production industry.

用途

- ☞ 礦業、窯業、化學和食品工業等粉粒體原料中鐵質磁性物分離。
- ☞ 廢棄物中鐵質磁性物和非磁性物磁選分類。

Specification

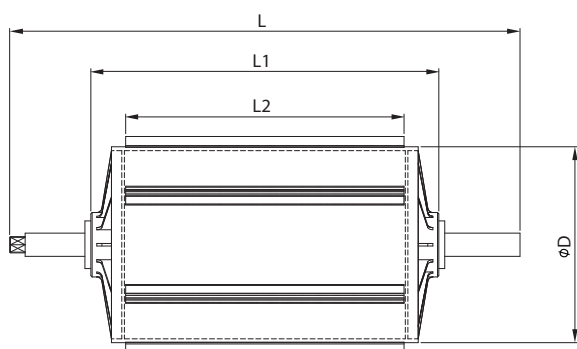
Size Model	Capacity	Dimension					Unit(mm)
		ØD	L	L1	L2	L3	Weight (KG)
FDA-3030	25m³/h	300	690	425	300	268	60
FDA-3050	45m³/h		890	650	500	468	100
FDA-4050	60m³/h	400	930	652	530	430	150
FDA-4080	90m³/h		1230	952	830	730	250
FDA-5050	80m³/h	500	930	652	530	430	215
FDA-5080	125m³/h		1230	952	830	730	345
FDA-6080	190m³/h	600	1230	952	830	730	410
FDA-60110	240m³/h		1530	1252	1130	1030	570

BIG SIZE PERMANENT MAGNET DRUM 大型永磁轉筒



FDB

Dimension



Application

- ☞ Application for the separation of large ferrite chips from the solid or liquid waste, such as recycle industry.

用途

- ☞ 粗大型廢棄物分離，各種原料中大形鐵片等磁性物體分離回收。

Specification

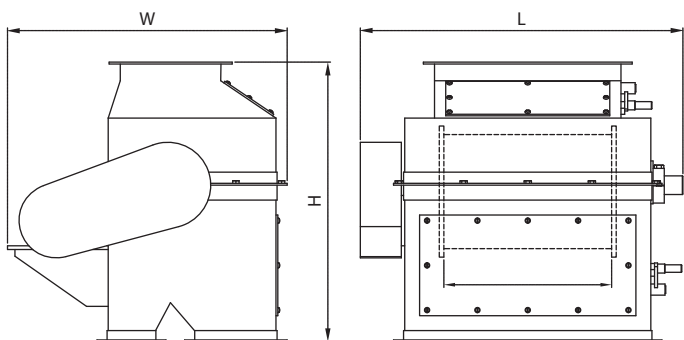
Size Model	Capacity	Dimension				Unit(mm)
		ØD	L	L1	L2	Weight (KG)
FDB-3026	12~17 t/h	760	1420	660	460	700
FDB-3048	20~32 t/h		1980	1220	1020	1000
FDB-3060	28~40 t/h		2280	1520	1320	1200
FDB-3636	16~24 t/h	930	1730	930	660	1000
FDB-3648	25~36 t/h		2020	1220	950	1350
FDB-3660	35~50 t/h		2320	1520	1250	1700
FDB-3672	42~60 t/h	1080	2620	1820	1550	2000
FDB-4260	40~56 t/h		2520	1520	1250	2500
FDB-4272	40~65 t/h		2820	1820	1550	3000

MAGNETIC DRUM SEPARATOR

永磁轉筒磁選機



Dimension



Application

- To separate magnetic or non-magnetic material from raw materials loaded from hopper in mining industry, chemical industry, foundry industry and powder production industry etc.

用途

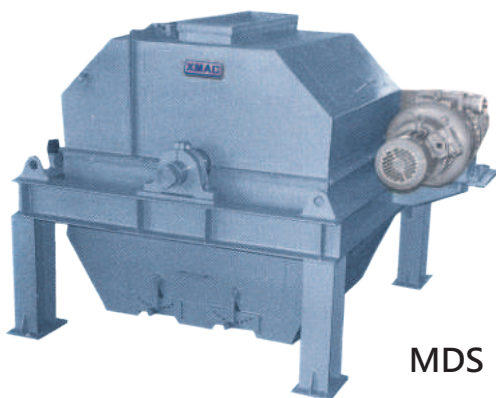
- 礦石、化學、鑄造等工業和粉粒體製造產業，原料中磁性和非磁性物質分離排除。

Specification

Size Model	Flow Capacity	Dimension			Motor	Weight (KG)
		L	W	H		
ADS-1525	15m ³ /h	630	700	700	0.2KW	110
ADS-2530	25m ³ /h	750	750	750		130
ADS-4030	40m ³ /h	900	750	750		210
ADS-5030	50m ³ /h	1050	800	750		330
ADS-7540	75m ³ /h	1000	950	850	0.4KW	450
ADS-9040	90m ³ /h	1150	950	850		550
ADS-10550	105m ³ /h	1000	1200	1100		600
ADS-12550	125m ³ /h	1200	1200	1100	0.75KW	740

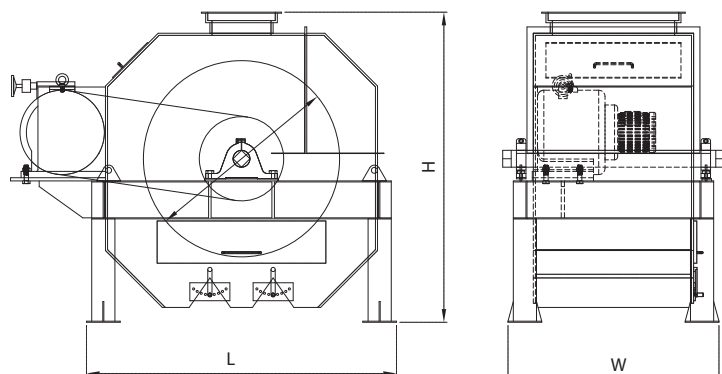
HIGH SPEED MAGNETIC SEPARATOR

高速轉筒磁選機



MDS

Dimension



Application

- Used for the separation of recovery slag and weakly magnetic mineral.
- Suitable for the separation of magnetic and non-magnetic powder production industry, such as foundry sand, waste foundry sand, ceramics, copper, aluminum, stainless etc.
- For removing and separating the iron scraps of machine tool, such as stainless, copper, aluminum, iron etc.

用途

- 礦渣礦石、弱磁性礦石原料中磁性物體磁選分離。
- 鑄造用砂、廢砂、樹脂、陶瓷、銅、鋁、不鏽鋼等粉末原料中磁性物體磁選分離。
- 機械加工產生不鏽鋼、銅、鋁、鐵等切削屑之磁選分離。

Specification

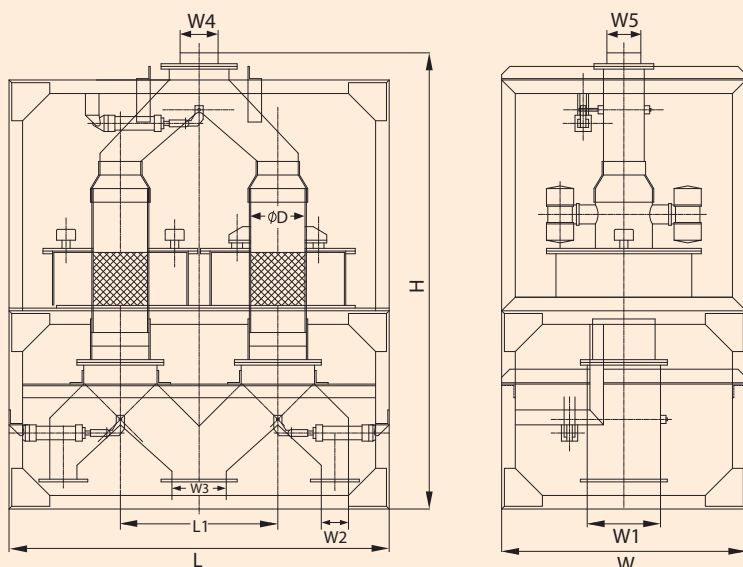
Size Model	Flow Capacity	Dimension			Weight (KG)
		L	W	H	
MDS-1015	2.5~12.0 t/h	1470	900	1500	1800
MDS-2430	4.5~24.0 t/h		1000		2200
MDS-3545	7.0~36.0 t/h		1150		2600
MDS-4560	9.0~48.0 t/h		1300		3300
MDS-6075	11.0~60.0 t/h		1500		3600
MDS-7090	13.0~72.0 t/h		1700		4000

ELECTRO MAGNETIC FILTER

高磁力電磁磁選機



Dimension



Example



Application

- Suitable for removal and segmentation of foundry industry, precision ceramics, copper, aluminum, stainless steel powder metallurgy, diamond wheels, diamond cutting tools and refractory plate industry.

用途

- 精密鑄造、精密陶瓷、銅、鋁、不鏽鋼粉末成型、鑽石砂輪、鑽石刀具、耐火板等製造產業，原料中鐵粉磁選過濾處理。

Features

- High voltage test for electrical windings is under 50Hz, AC 2000V in 1 second, and no damage.
- Used transformer oil as insulation and temperature of oil is less than 60°C.
- The magnetic screen is made by stainless high magnetic conduction material. Magnetic performance $\geq 15\%$ of the excitation magnetic field.
- Frame and the surface which touch the raw material are made by imported stainless steel SUS 304.
- Using safe and reliable cooling circulation system which not only extends the service life of the machinery but also ensure the machinery in working order for long period of time.
- An auto-warning device is installed in the electric cabinet which offers buzzer and beacon alarm, and reduce the impact of iron removing process while machine shut down.
- The feature for combining fully and semi automation in iron removing and discharging process offers easy cleaning, swift operation and time & effort saving.
- A series of effective measures have been taken into structure designs and manufacturing processes which extend the service life of the machinery dramatically.
- The electrical equipment of this machine can fully ensure personnel safety, reliability, long working hours, and easy installation and maintenance.

Specification

Size	Capacity	Dimension										Weight (KG)
		ØD	H	L	L1	W	W1	W2	W3	W4	W5	
MYM-20	2 ton/hr	1700	1700	1400	580	900	270	100	200	140	125	950
MYM-50	5 ton/hr	1900	1900	1600	690	1000	370	150	250	200	160	1300
MYM-100	10 ton/hr	2150	2150	1900	850	1200	510	200	350	300	250	1900

STRONG MAGNETIC SEPARATOR

高磁力磁選機

Application

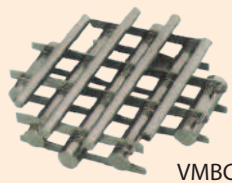
食品、化學工業、液體、粉粒體原料、高純度磁選材料，高純度磁選。

用途

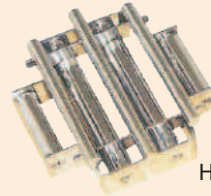
食品、化學工業、液體、粉粒體原料、高純度磁選分離。



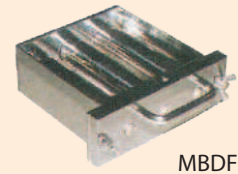
GMBC



VMBC



HMBC



MBDF



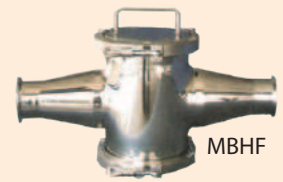
MPCF



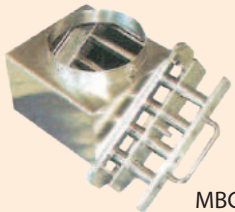
MPTF



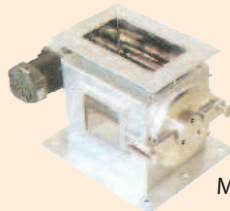
MBIF



MBHF



MBCF



MBRF

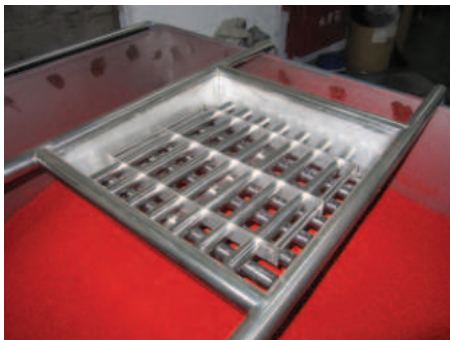


MBTE



MBYF

Example



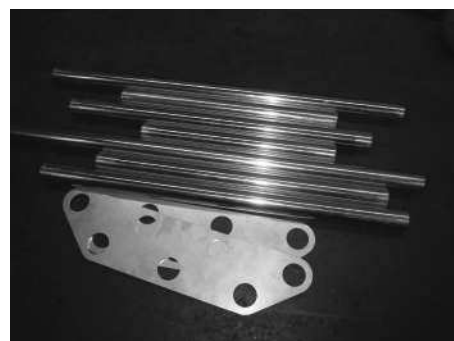
Chemicle Filtration



Coolant Tank



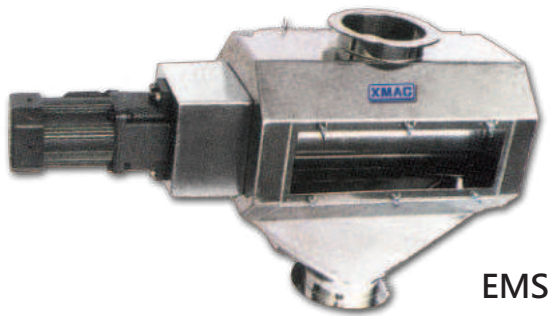
Plastic Injection Machine



Super Magnetic Bar

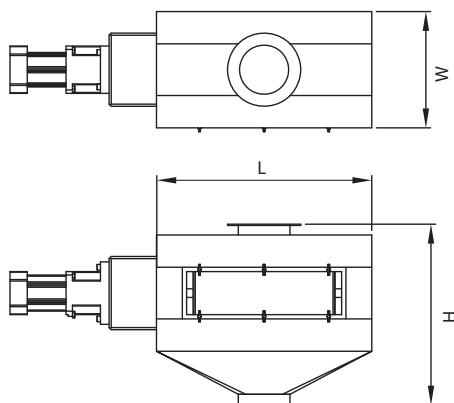
STRONG MAGNETIC SEPARATOR

高磁力永磁磁選機



EMS

Dimension



Application

- Suitable for removing and separating ferrite scraps in the processes of rice, beans, wheat and coffee bean etc.

用途

- 稻米、麥類、豆類、咖啡豆等農產品加工和精米碾製過程中鐵金屬物體磁選分離。

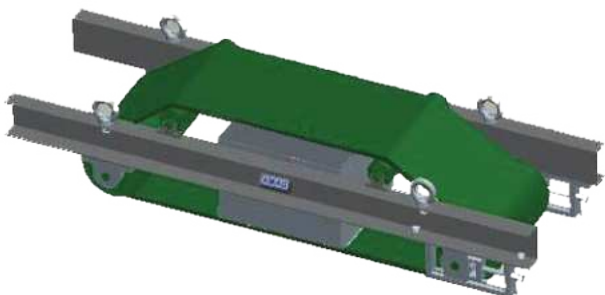
Specification

Size Model	Capacity	Motor	Dimention			Working Temperature	Weight (KG)
			L	W	H		
EMS-1630	3.0m ³ /h		550	260	450	Max.80°C	28
EMS-2135	4.5m ³ /h	0.1KW	600	310	500		40
EMS-2640	6.0m ³ /h		650	360	550		55

Unit(mm)

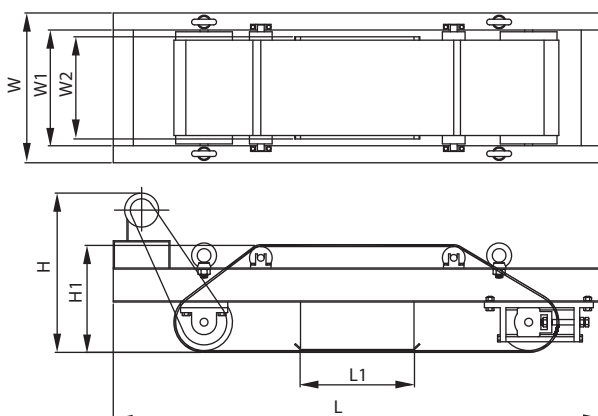
MAGNETIC PULLY CONVEYER

永磁帶輪輸送機



UBS

Dimension



Application

- For separating the ferrite impurities from the raw materials in food industry, chemical industry and agriculture etc.
- Suitable for the segmentation of magnetic and non-magnetic materials in recycle industries.
- Used for separating the recovery slag from the solid waste in the metal industry.

用途

- 礦石、化工、廢棄物等產業，製程中磁性物體磁選分離。
- 廢棄物作業流程中磁性物和非磁性物的磁選分離。
- 煤渣等產業廢棄物中磁性物體分離。

Specification

Size Model	Capacity Belt Width	Belt Width W1	Body Dimention			Magnet Unit		Weight (KG)
			L	W	H	L1	W2	
UBS-2540	350	300	1274	620	519	400	250	180
UBS-3550	450	400	1374	700	519	500	350	250
UBS-6550	600	600	1612	910	445	650	490	400

Unit(mm)