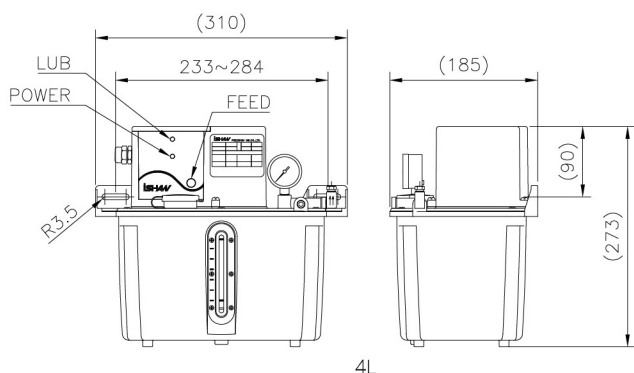


YET-C1

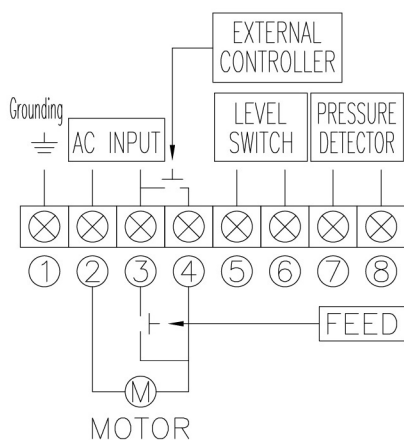
Resistant type Electric Lubricator



4L



4L



YET-C1 Resistant Type Electric Lubricator

1. CE mark
2. Check valve equipped to prevent the reverse flow.
3. The over temperature/load protector is attached to protect the motor.
4. The pressure relief valve equipped on the lubricator can prolong the system life and reduce damage on the gear pump and tubing.
5. The indicator on the panel can display the operation of the lubricator.
6. Float switch(NC contact) is designed to output signal when the lubricant is sufficient.
7. Pressure switch(NC contact) is upon request.
8. "FEED" key can force the lubricator to feed the lubricant.
9. Feed the lubricant through proportion devices or other metering distributors.

Model	YET-C1		YET-C1P1	
Voltage (Single Phase)	110V or 220V			
Consumption Power (W)	64			
Output Power (W)	8			
Capacity of Terminal Output	AC 240V/DC 200V 0.5A (Float switch)			
	DC 12V 3A (Pressure switch)			
Lubrication time (second/minute)	Cooperate with PLC control system			
Intermittent Time (second/minute/hour/cycle)	Cooperate with PLC control system			
Output Bore	Ø4 or Ø6			
Max. Output Pressure MPa (kgf/cm²)	0.6 (6)			
Output Volume (cc/ min)	200			
Pressure Release device	X			
Float Switch	O			
Pressure Switch (kgf/cm²)	X			O
Pressure Gauge	O			
Alarm Beeper	x			
Tank Capacity (L)	2	3	4	4(Metal)
Weight (kg)	2.6	2.9	3.2	3.6

Order Code | YET - C1 **P1** **004** **A** B 0 - **1** **06**

Control type	Pressure monitoring	Reservoir	Reservoir material	Mounting	Oil return device	Voltage	Output bore
C1 = PLC	P1 = with Null = without	002 = 2L 003 = 3L 004 = 4L 006 = 6L 008 = 8L	P = Resin (2/3/4L) S = Steel (6L up) A = Aluminum (Only 4L)	B= Rear bracket	0 = without	1 = 110V 2 = 220V	04 = 4mm 06 = 6mm