

**ASSURING
ULTRA
QUIET
BALANCED
PERFORMANCE**





سبل

Video



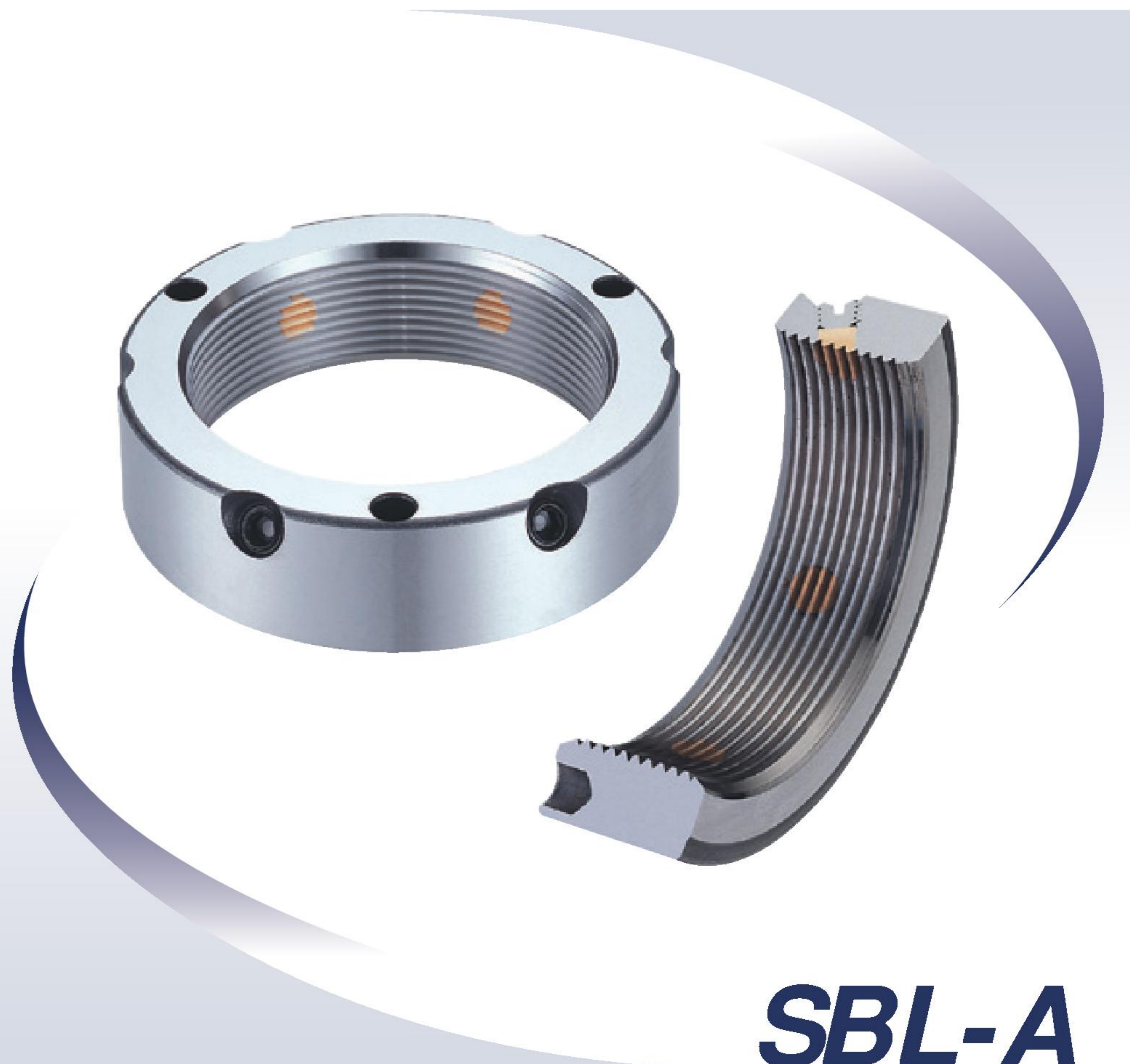
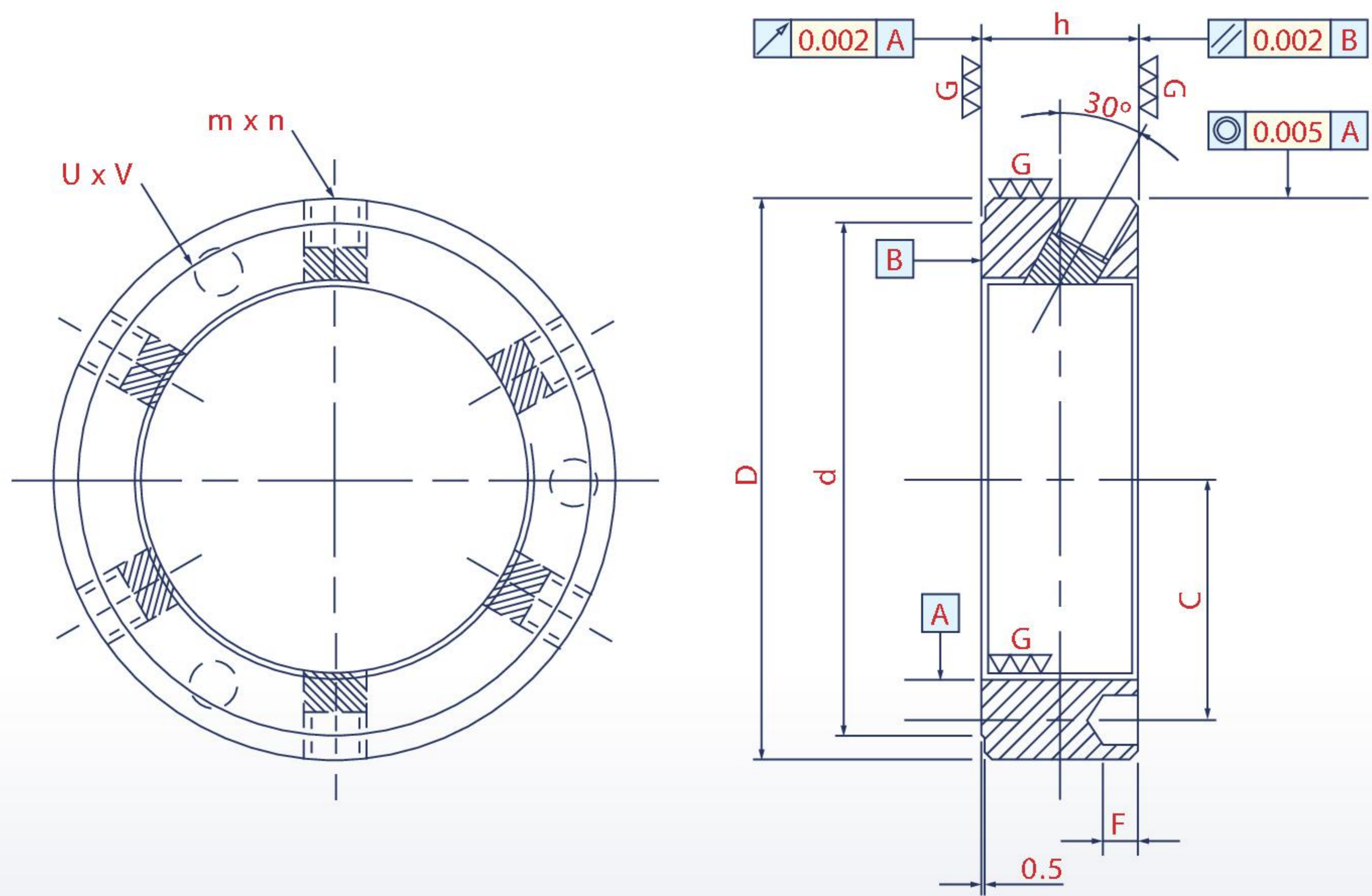


Yinsh Precision Ind. Co., Ltd. specializes in the production of superfine balanced locknuts for high speed machine tool spindles. Their newest SBL series is designed for all configurations of internal and direct drive spindles. Inner threads, outer skirts, clamping and trailing rims are all precision ground. Coupled with balance adjustment screws, these locknuts stay perfectly balanced at high speeds. Made of high grade SCM440 alloy steel and hardened to HRC50°C ±2, rigidity and precision at high speeds is given. All locknuts can be fitted with adjustment screw hole screw-in plugs (option), eliminating high frequency noise and subsequent vibration. Trust that Yinsh Precision Ind. Co., Ltd. has the right locknuts for your machine.



Contents

- _1_ SBL-A*
- _2_ SBL-B*
- _3_ SBL-C*
- _4_ SBL-D*
- _5_ SBL-E*
- _6_ Diagram of Locknuts in Use*
- _7_ Noise Elimination
Screw-in Plugs (Option) Specifications*
- _7_ Specifics for Installation*

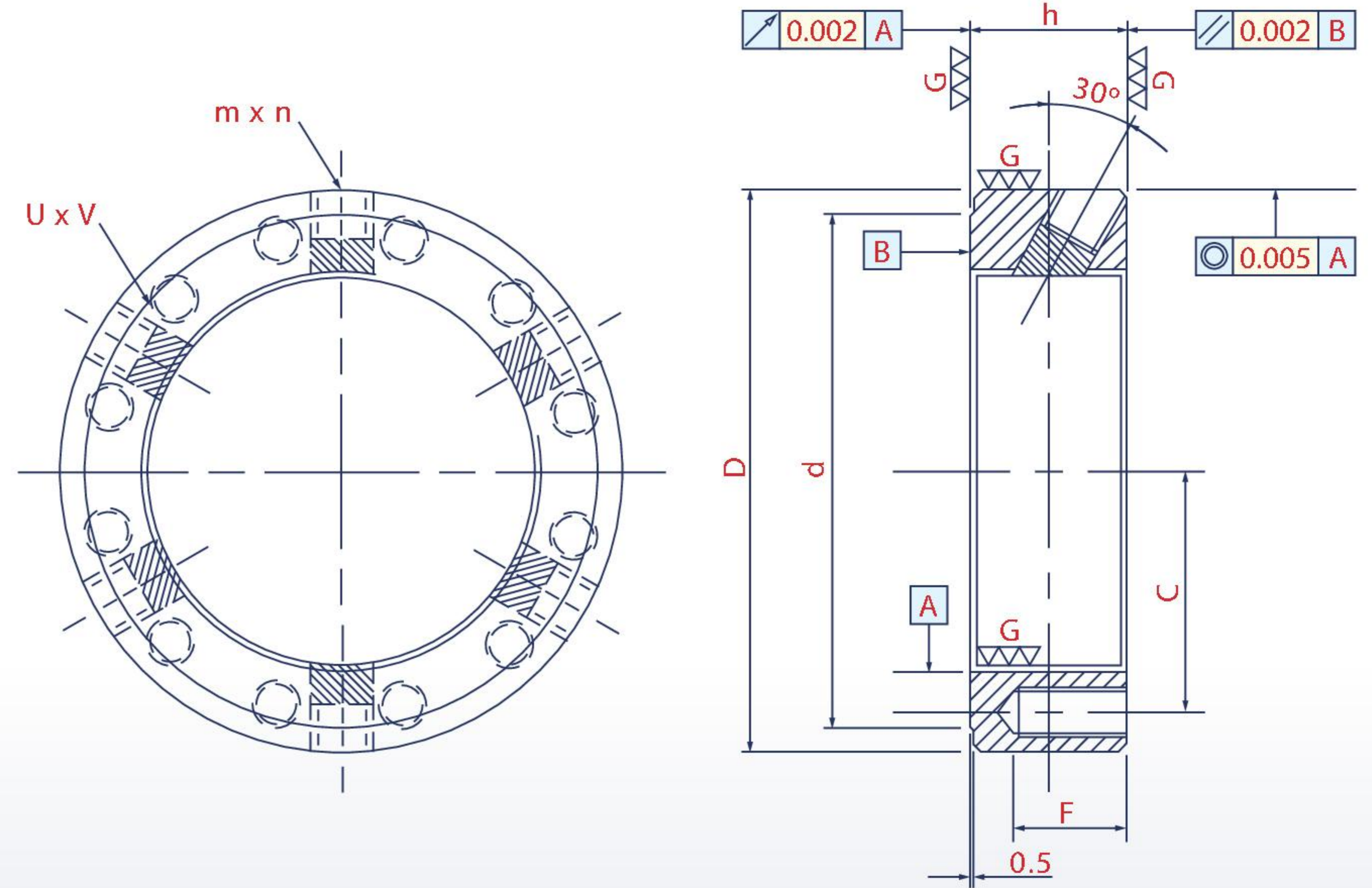


Lock screws intersect at a 30° angle. Superior to traditional locknuts with only 3 lock screws, the SBL-A employ 6 lock screws to the axis. Perfect mesh. Precision and balanced compression. Zero loosening under any load or speed. Inner threads, outer skirts, clamping and trailing rims are all precision ground, minimizing noise and vibration.

- Material Composition: SCM440(42CrMo4)
- Hardness: HRC48° ~ 52°
- Thread Precision: ISO 4H
- Edge Bevel: 0.002mm
- Parallelism: 0.002mm
- Concentricity: 0.005mm

SBL-A

Thread	D	h	d	U x V	C	F	m x n	MAX.Nm	Loosening Torque Nm	
SBL-A M20 x 1	38	16	33	Ø4.3 x 3	13	5	M5 x 6	4.5	28.9	
SBL-A M20 x 1.5					16		M6 x 6			8.0
SBL-A M25 x 1.5					19					
SBL-A M30 x 1.5	45	18	40	Ø4.3 x 3	22	5			32.4	
SBL-A M35 x 1.5	52		47		25					39.2
SBL-A M40 x 1.5	58		52		28					46.1
SBL-A M45 x 1.5	65	20	59	Ø4.3 x 3	30	5			61.8	
SBL-A M50 x 1.5	70		64		33					70.6
SBL-A M55 x 2	75		68		35					88.2
SBL-A M60 x 2	80	22	73	Ø5.3 x 3	38	6	M8 x 6	18.0	98.0	
SBL-A M65 x 2	85		78		41					127.5
SBL-A M70 x 2	92		84		43					147.1
SBL-A M75 x 2	98	24	90	Ø5.3 x 3	46	6			152.0	
SBL-A M80 x 2	105		96		49					156.9
SBL-A M85 x 2	110		102		53					176.5
SBL-A M90 x 2	120	26	108	Ø6.4 x 3	55	7			186.3	
SBL-A M95 x 2	125		113		58					201.0
SBL-A M100 x 2	130		118		61					220.6
SBL-A M105 x 2	140	28	125	Ø6.4 x 3	64	7			236.3	
SBL-A M110 x 2	145		132		66					252.0
SBL-A M115 x 2	150		137		69					268.1
SBL-A M120 x 2	155	30	142	Ø6.4 x 3	71	7	M10 x 6	35.0	279.4	
SBL-A M125 x 2	160		147		74					289.2
SBL-A M130 x 2	165		152		78					313.7
SBL-A M135 x 2	175	32	160	Ø6.4 x 3	80	7			352.9	
SBL-A M140 x 2	180		165		84					392.2
SBL-A M145 x 2	190		175		86					436.3
SBL-A M150 x 2	195		180						480.4	

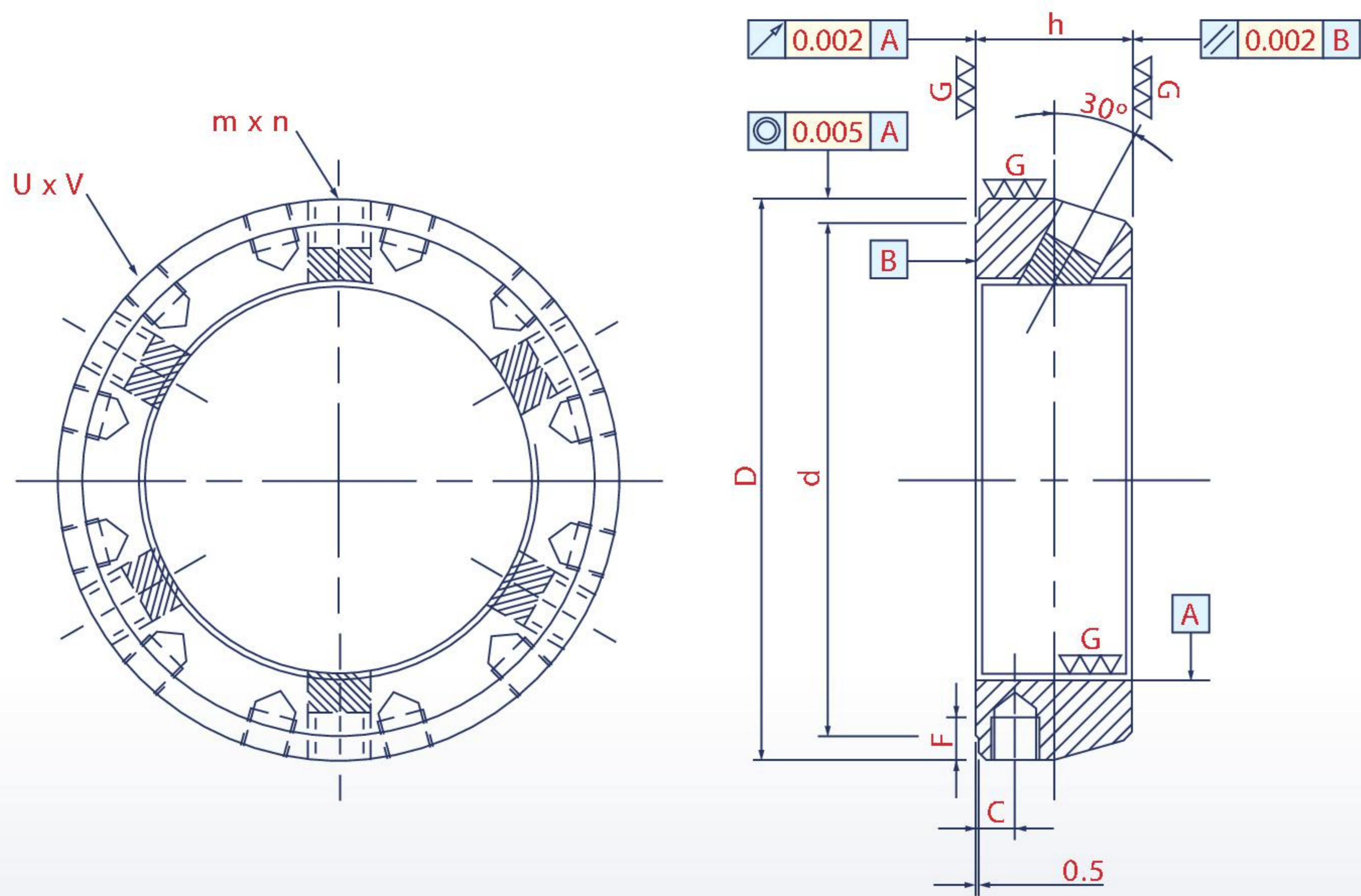


This design differs from the SBL-A in that there are balance adjustment screws added at the trailing surface, making for added convenience in precision adjustment. Balance adjustment screw holes can be fitted with screw-in plugs (option), eliminating high frequency noise and subsequent vibration.

- Material Composition: SCM440(42CrMo4)
- Hardness: HRC48° ~ 52°
- Thread Precision: ISO 4H
- Parallelism: 0.002mm
- Edge Bevel: 0.002mm
- Concentricity: 0.005mm

SBL-B

Thread	D	h	d	U x V	C	F	m x n	MAX.Nm	Loosening Torque Nm	
SBL-B M20 x 1	38	16	33	M4 x 6	13	10	M5 x 3	4.5	28.9	
SBL-B M20 x 1.5					16		M6 x 3			8.0
SBL-B M25 x 1.5					19		M5 x 9			12
SBL-B M30 x 1.5	45	18	40	M6 x 9	22	14	M8 x 3	18.0	39.2	
SBL-B M35 x 1.5	52		25		46.1					
SBL-B M40 x 1.5	58		28		61.8					
SBL-B M45 x 1.5	65	20	59	M6 x 12	30	16	M8 x 6	18.0	70.6	
SBL-B M50 x 1.5	70		33		88.2					
SBL-B M55 x 2	75		35		98.0					
SBL-B M60 x 2	80	22	73	M8 x 12	38	18	M10 x 6	35.0	127.5	
SBL-B M65 x 2	85		41		147.1					
SBL-B M70 x 2	92		43		152.0					
SBL-B M75 x 2	98	24	90	M8 x 12	46	20	M10 x 6	35.0	156.9	
SBL-B M80 x 2	105		49		176.5					
SBL-B M85 x 2	110		53		186.3					
SBL-B M90 x 2	120	26	108	M8 x 12	55	24	M10 x 6	35.0	201.0	
SBL-B M95 x 2	125		58		220.6					
SBL-B M100 x 2	130		61		236.3					
SBL-B M105 x 2	140	28	125	M8 x 12	64	26	M10 x 6	35.0	252.0	
SBL-B M110 x 2	145		66		268.1					
SBL-B M115 x 2	150		69		279.4					
SBL-B M120 x 2	155	30	142	M8 x 12	71	24	M10 x 6	35.0	289.2	
SBL-B M125 x 2	160		74		313.7					
SBL-B M130 x 2	165		78		352.9					
SBL-B M135 x 2	175	32	160	M8 x 12	80	26	M10 x 6	35.0	392.2	
SBL-B M140 x 2	180		84		436.3					
SBL-B M145 x 2	190		86		480.4					
SBL-B M150 x 2	195		180							

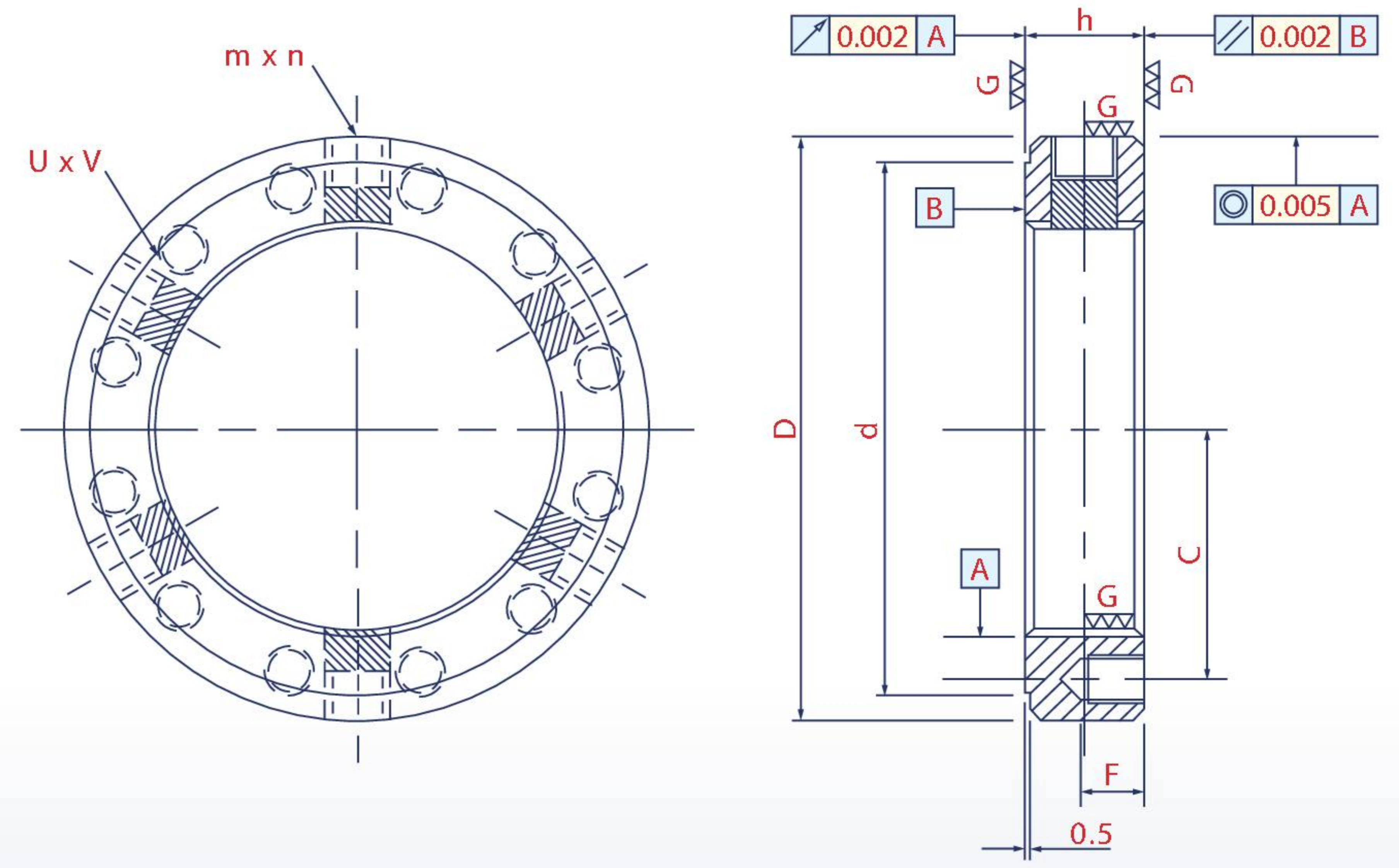


The difference with this design is that the balance adjustment screws tighten from the outer skirt at a radial angle. It is the optimal choice for spindles with restricted space. Balance adjustment screw holes can be fitted with screw-in plugs (option), eliminating high frequency noise and subsequent vibration.

- Material Composition: SCM440(42CrMo4)
- Hardness: HRC48° ~ 52°
- Thread Precision: ISO 4H
- Parallelism: 0.002mm
- Edge Bevel: 0.002mm
- Concentricity: 0.005mm

SBL-C

Thread	D	h	d	U x V	C	F	m x n	MAX.Nm	Loosening Torque Nm	
SBL-C M20 x 1	38	16	33	M5 x 6	4	5	M5 x 3	4.5	28.9	
SBL-C M20 x 1.5							M6 x 3			8.0
SBL-C M25 x 1.5							M5 x 9			4.5
SBL-C M30 x 1.5	45	18	40	M5 x 9	4.5	5	M8 x 3	18.0	39.2	
SBL-C M35 x 1.5	52		47						46.1	
SBL-C M40 x 1.5	58		52						61.8	
SBL-C M45 x 1.5	65	20	59	M6 x 9	5	6	M8 x 6	18.0	70.6	
SBL-C M50 x 1.5	70		64						88.2	
SBL-C M55 x 2	75		68						98.0	
SBL-C M60 x 2	80	22	73	M6 x 12	5.5	7	M8 x 6	18.0	127.5	
SBL-C M65 x 2	85		78						147.1	
SBL-C M70 x 2	92		84						152.0	
SBL-C M75 x 2	98	24	90	M8 x 12	6	8	M8 x 6	18.0	156.9	
SBL-C M80 x 2	105		96						176.5	
SBL-C M85 x 2	110		102						186.3	
SBL-C M90 x 2	120	26	108	M8 x 12	6.5	9	M8 x 6	18.0	201.0	
SBL-C M95 x 2	125		113						220.6	
SBL-C M100 x 2	130		118						236.3	
SBL-C M105 x 2	140	28	125	M8 x 12	7	11	M10 x 6	35.0	252.0	
SBL-C M110 x 2	145		132						268.1	
SBL-C M115 x 2	150		137						279.4	
SBL-C M120 x 2	155	30	142	M8 x 12	7.5	14	M10 x 6	35.0	289.2	
SBL-C M125 x 2	160		147						313.7	
SBL-C M130 x 2	165		152						352.9	
SBL-C M135 x 2	175	32	160	M8 x 12	8	16	M10 x 6	35.0	392.2	
SBL-C M140 x 2	180		165						436.3	
SBL-C M145 x 2	190		175						480.4	
SBL-C M150 x 2	195		180							

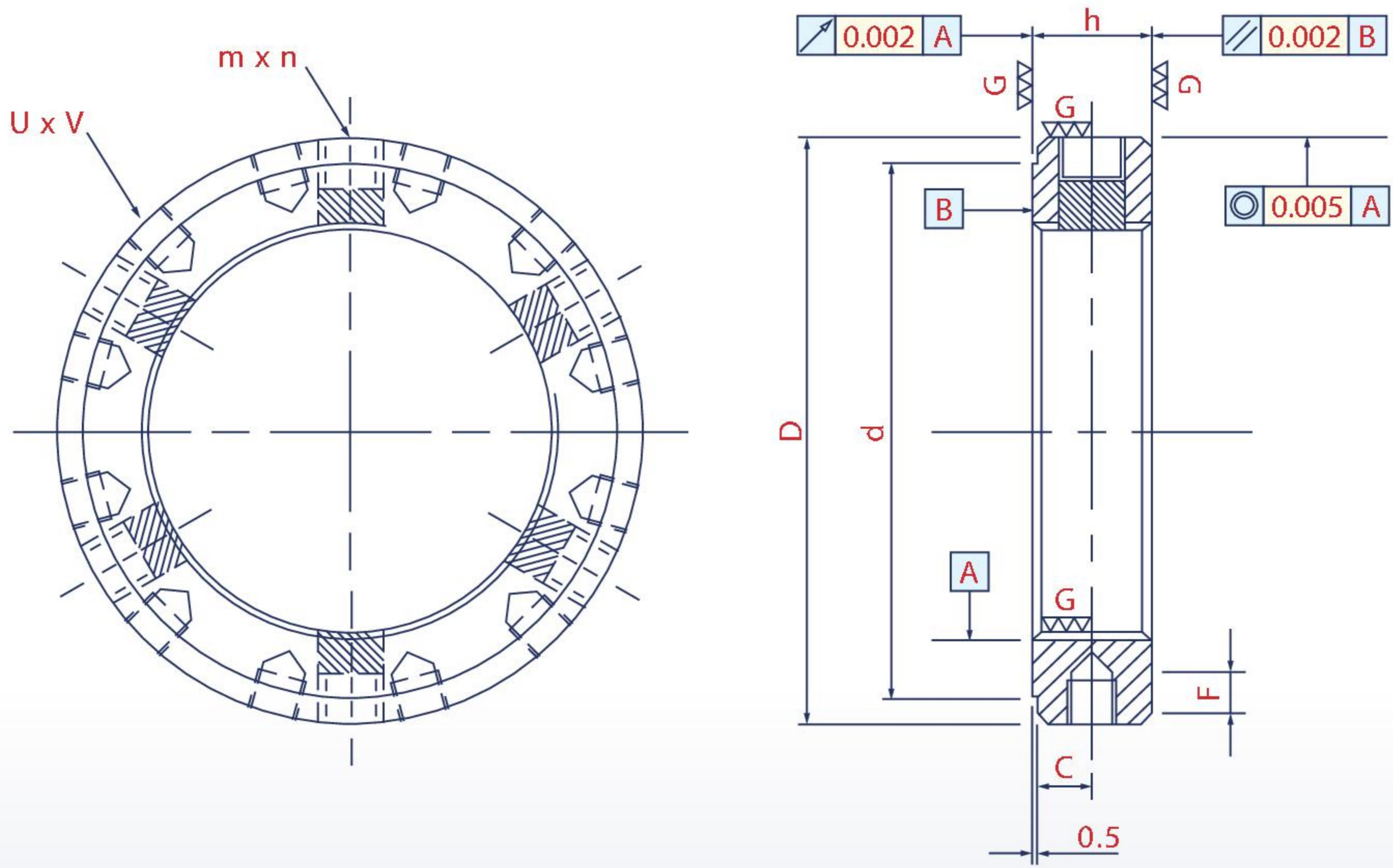


For spindles with exceptionally restricted or narrow space, this model is ideal in that it is super thin and requires no additional tooling or components to do its job. For thread sizes under M45 we offer the SBL-D with 3 lock screws, and for larger threads we offer the SBL-D with 6 lock screws. Balance adjustment screw holes can be fitted with screw-in plugs (option), eliminating high frequency noise and subsequent vibration.

- Material Composition: SCM440(42CrMo4)
- Thread Precision: ISO 4H
- Edge Bevel: 0.002mm
- Hardness: HRC48° ~ 52°
- Parallelism: 0.002mm
- Concentricity: 0.005mm

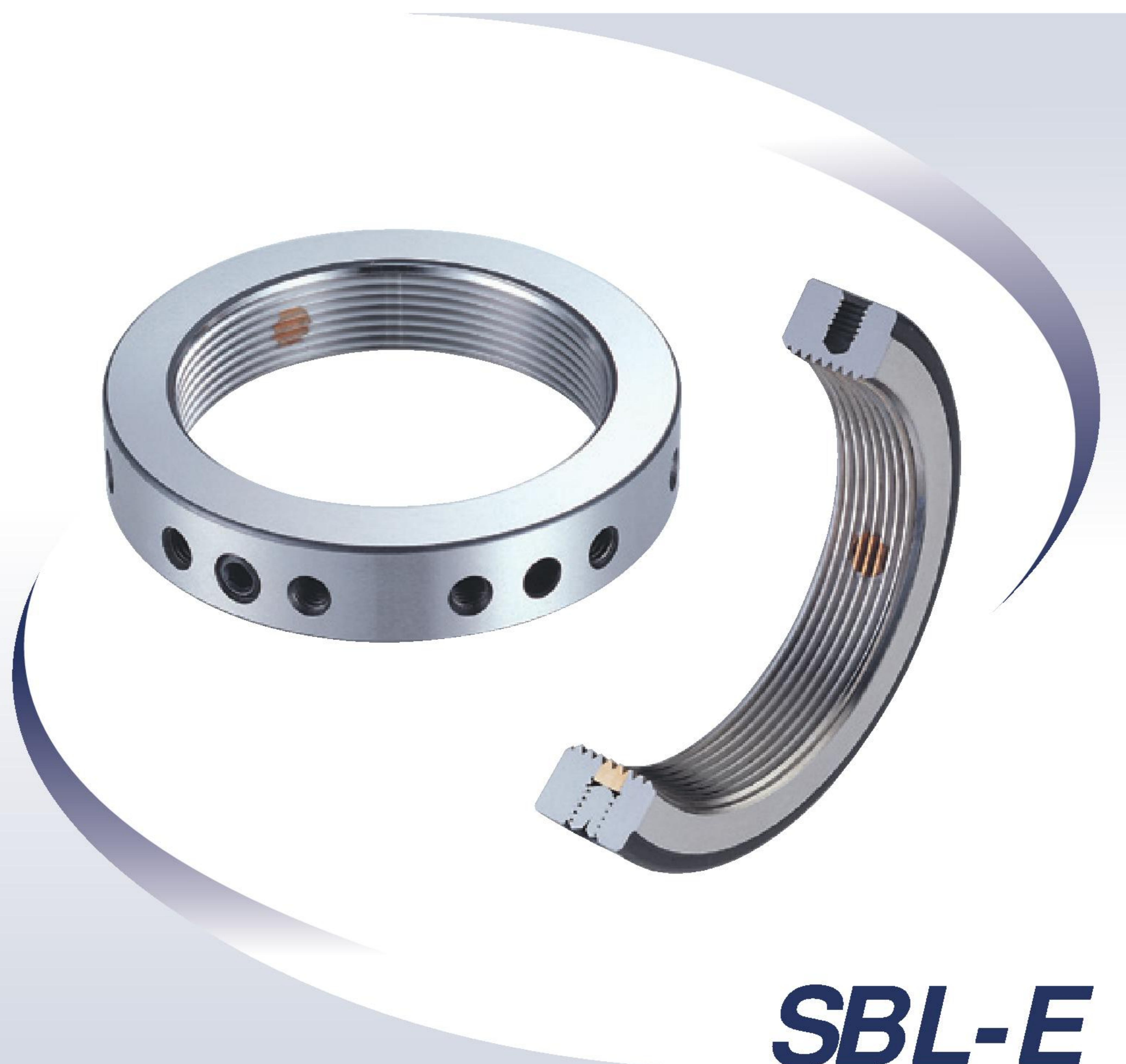
SBL-D

Thread	D	h	d	U x V	C	F	m x n	MAX.Nm	Loosening Torque Nm									
SBL-D M20 x 1	32	10	27	M4 x 6	13	5	M5 x 3	4.5	24.0									
SBL-D M20 x 1.5																		
SBL-D M25 x 1.5	38	12	33	M5 x 9	16	6	M6 x 3	8.0	26.5									
SBL-D M30 x 1.5																		
SBL-D M35 x 1.5																		
SBL-D M40 x 1.5	45	14	40	M6 x 9	19	8	M8 x 6	18.0	28.4									
SBL-D M45 x 1.5																		
SBL-D M50 x 1.5																		
SBL-D M55 x 2																		
SBL-D M60 x 2	52	16	47	M6 x 12	22	10	M10 x 6	35.0	34.3									
SBL-D M65 x 2																		
SBL-D M70 x 2																		
SBL-D M75 x 2																		
SBL-D M80 x 2																		
SBL-D M85 x 2	58	18	52	M8 x 12	25	12	M10 x 6	35.0	36.3									
SBL-D M90 x 2																		
SBL-D M95 x 2																		
SBL-D M100 x 2																		
SBL-D M105 x 2																		
SBL-D M110 x 2																		
SBL-D M115 x 2	65	20	59	M8 x 12	28	14	M10 x 6	35.0	56.9									
SBL-D M120 x 2																		
SBL-D M125 x 2																		
SBL-D M130 x 2																		
SBL-D M135 x 2																		
SBL-D M140 x 2																		
SBL-D M145 x 2																		
SBL-D M150 x 2	70	22	64	M8 x 12	30	16	M10 x 6	35.0	63.7									
SBL-D M155 x 2																		
SBL-D M160 x 2																		
SBL-D M165 x 2																		
SBL-D M170 x 2																		
SBL-D M175 x 2																		
SBL-D M180 x 2																		
SBL-D M185 x 2																		
SBL-D M190 x 2	75	24	68	M8 x 12	33	18	M10 x 6	35.0	68.6									
SBL-D M195 x 2																		
SBL-D M200 x 2																		
SBL-D M205 x 2																		
SBL-D M210 x 2																		
SBL-D M215 x 2																		
SBL-D M220 x 2																		
SBL-D M225 x 2																		
SBL-D M230 x 2																		
SBL-D M235 x 2	80	26	73	M8 x 12	35	20	M10 x 6	35.0	96.1									
SBL-D M240 x 2																		
SBL-D M245 x 2																		
SBL-D M250 x 2																		
SBL-D M255 x 2																		
SBL-D M260 x 2																		
SBL-D M265 x 2																		
SBL-D M270 x 2																		
SBL-D M275 x 2																		
SBL-D M280 x 2																		
SBL-D M285 x 2	85	26	78	M8 x 12	38	20	M10 x 6	35.0	112.7									
SBL-D M290 x 2																		
SBL-D M295 x 2																		
SBL-D M300 x 2																		
SBL-D M305 x 2																		
SBL-D M310 x 2																		
SBL-D M315 x 2																		
SBL-D M320 x 2																		
SBL-D M325 x 2																		
SBL-D M330 x 2																		
SBL-D M335 x 2																		
SBL-D M340 x 2	92	26	84	M8 x 12	41	20	M10 x 6	35.0	137.3									
SBL-D M345 x 2																		
SBL-D M350 x 2																		
SBL-D M355 x 2																		
SBL-D M360 x 2																		
SBL-D M365 x 2																		
SBL-D M370 x 2																		
SBL-D M375 x 2																		
SBL-D M380 x 2																		
SBL-D M385 x 2																		
SBL-D M390 x 2																		
SBL-D M395 x 2																		
SBL-D M400 x 2	98	26	90	M8 x 12	43	20	M10 x 6	35.0	145.1									
SBL-D M405 x 2																		
SBL-D M410 x 2																		
SBL-D M415 x 2																		
SBL-D M420 x 2																		
SBL-D M425 x 2																		
SBL-D M430 x 2																		
SBL-D M435 x 2																		
SBL-D M440 x 2																		
SBL-D M445 x 2																		
SBL-D M450 x 2																		
SBL-D M455 x 2																		
SBL-D M460 x 2										105	26	96	M8 x 12	46	20	M10 x 6	35.0	149.0
SBL-D M465 x 2																		
SBL-D M470 x 2																		
SBL-D M475 x 2																		
SBL-D M480 x 2																		
SBL-D M485 x 2																		
SBL-D M490 x 2																		
SBL-D M495 x 2																		
SBL-D M500 x 2																		
SBL-D M505 x 2																		
SBL-D M510 x 2																		
SBL-D M515 x 2																		
SBL-D M520 x 2																		
SBL-D M525 x 2	110	26	102	M8 x 12	49	20	M10 x 6	35.0	168.6									
SBL-D M530 x 2																		
SBL-D M535 x 2																		
SBL-D M540 x 2																		
SBL-D M545 x 2																		
SBL-D M550 x 2																		
SBL-D M555 x 2																		
SBL-D M560 x 2																		
SBL-D M565 x 2																		
SBL-D M570 x 2																		
SBL-D M575 x 2																		
SBL-D M580 x 2																		
SBL-D M585 x 2																		
SBL-D M590 x 2																		
SBL-D M595 x 2										110	26	108	M8 x 12	53	20	M10 x 6	35.0	178.4
SBL-D M600 x 2																		
SBL-D M605 x 2																		
SBL-D M610 x 2																		
SBL-D M615 x 2																		
SBL-D M620 x 2																		
SBL-D M625 x 2																		
SBL-D M630 x 2																		
SBL-D M635 x 2																		
SBL-D M640 x 2																		
SBL-D M645 x 2																		
SBL-D M650 x 2																		
SBL-D M655 x 2																		
SBL-D M660 x 2																		
SBL-D M665 x 2	120	26	113	M8 x 12	55	20	M10 x 6	35.0	193.1									
SBL-D M670 x 2																		
SBL-D M675 x 2																		
SBL-D M680 x 2																		
SBL-D M685 x 2																		
SBL-D M690 x 2																		
SBL-D M695 x 2																		
SBL-D M700 x 2																		
SBL-D M705 x 2																		
SBL-D M710 x 2																		
SBL-D M715 x 2																		
SBL-D M720 x 2																		
SBL-D M725 x 2																		
SBL-D M730 x 2																		
SBL-D M735 x 2										125	26	118	M8 x 12	58	20	M10 x 6	35.0	210.8
SBL-D M740 x 2																		
SBL-D M745 x 2																		
SBL-D M750 x 2																		
SBL-D M755 x 2																		
SBL-D M760 x 2																		
SBL-D M765 x 2																		
SBL-D M770 x 2																		
SBL-D M775 x 2																		
SBL-D M780 x 2																		
SBL-D M785 x 2																		
SBL-D M790 x 2																		
SBL-D M795 x 2																		
SBL-D M800 x 2																		
SBL-D M805 x 2	130	26	125	M8 x 12	61	20	M10 x 6	35.0	215.7									
SBL-D M810 x 2																		
SBL-D M815 x 2																		
SBL-D M820 x 2																		
SBL-D M825 x 2																		
SBL-D M830 x 2																		
SBL-D M835 x 2																		
SBL-D M840 x 2																		
SBL-D M845 x 2																		
SBL-D M850 x 2																		
SBL-D M855 x 2																		
SBL-D M860 x 2																		
SBL-D M865 x 2																		
SBL-D M870 x 2																		
SBL-D M875 x 2										140	26	132	M8 x 12	64	20	M10 x 6	35.0	230.4
SBL-D M880 x 2																		
SBL-D M885 x 2																		
SBL-D M890 x 2																		
SBL-D M895 x 2																		
SBL-D M900 x 2																		
SBL-D M905 x 2																		
SBL-D M910 x 2																		
SBL-D M915 x 2																		
SBL-D M920 x 2																		
SBL-D M925 x 2																		
SBL-D M930 x 2																		
SBL-D M935 x 2																		
SBL-D M940 x 2																		
SBL-D M945 x 2	145	26	137	M8 x 12	66	20	M10 x 6	35.0	250.0									
SBL-D M950 x 2																		
SBL-D M955 x 2																		
SBL-D M960 x 2																		
SBL-D M965 x 2																		
SBL-D M970 x 2																		
SBL-D M975 x 2																		
SBL-D M980 x 2																		
SBL-D M985 x 2																		
SBL-D M990 x 2																		
SBL-D M995 x 2																		
SBL-D M1000 x 2																		
SBL-D M1005 x 2																		
SBL-D M1010 x 2																		
SBL-D M1015 x 2										150	26	142	M8 x 12	69	20	M10 x 6	35.0	264.7
SBL-D M1020 x 2																		
SBL-D M1025 x 2																		
SBL-D M1030 x 2																		
SBL-D M1035 x 2																		
SBL-D M1040 x 2																		
SBL-D M1045 x 2																		
SBL-D M1050 x 2																		
SBL-D M1055 x 2																		
SBL-D M1060 x 2																		
SBL-D M1065 x 2																		
SBL-D M1070 x 2																		
SBL-D M1075 x 2																		
SBL-D M1080 x 2																		
SBL-D M1085 x 2	155	26	147	M8 x 12	71	20	M10 x 6	35.0	274.5									
SBL-D M1090 x 2																		
SBL-D M1095 x 2																		
SBL-D M1100 x 2																		
SBL-D M1105 x 2																		
SBL-D M1110 x 2																		
SBL-D M1115 x 2																		
SBL-D M1120 x 2																		
SBL-D M1125 x 2																		
SBL-D M1130 x 2																		
SBL-D M1135 x 2																		
SBL-D M1140 x 2																		
SBL-D M1145 x 2																		
SBL-D M1150 x 2																		
SBL-D M1155 x 2										160	26	152	M8 x 12	74	20	M10 x 6	35.0	294.1
SBL-D M1160 x 2																		
SBL-D M1165 x 2																		
SBL-D M1170 x 2																		
SBL-D M1175 x 2																		
SBL-D M1180 x 2																		
SBL-D M1185 x 2																		
SBL-D M1190 x 2																		
SBL-D M1195 x 2																		
SBL-D M1200 x 2																		
SBL-D M1205 x 2																		
SBL-D M1210 x 2																		
SBL-D M1215 x 2																		
SBL-D M1220 x 2																		
SBL-D M1225 x 2	165	26	160	M8 x 12	78	20	M10 x 6	35.0	328.4									
SBL-D M1230 x 2																		
SBL-D M1235 x 2																		
SBL-D M1240 x 2																		
SBL-D M1245 x 2																		
SBL-D M1250 x 2																		
SBL-D M1255 x 2																		
SBL-D M1260 x 2																		
SBL-D M1265 x 2																		
SBL-D M1270 x 2																		
SBL-D M1275 x 2																		
SBL-D M1280 x 2																		
SBL-D M1285 x 2																		
SBL-D M1290 x 2																		
SBL-D M1295 x 2										175	26	165	M8 x 12	80	20	M10 x 6	35.0	372.5
SBL-D M1300 x 2																		
SBL-D M1305 x 2																		
SBL-D M1310 x 2																		
SBL-D M1315 x 2																		
SBL-D M1320 x 2																		
SBL-D M1325 x 2																		
SBL-D M1330 x 2																		
SBL-D M1335 x 2																		
SBL-D M1340 x 2																		
SBL-D M1345 x 2																		
SBL-D M1350 x 2																		
SBL-D M1355 x 2																		
SBL-D M1360 x 2																		
SBL-D M1365 x 2	180	26	175	M8 x 12	84	20	M10 x 6	35.0	402.0									
SBL-D M1370 x 2																		
SBL-D M1375 x 2																		
SBL-D M1380 x 2																		
SBL-D M1385 x 2																		
SBL-D M1390 x 2																		
SBL-D M1395 x 2																		
SBL-D M1400 x 2																		
SBL-D M1405 x 2																		
SBL-D M1410 x 2																		
SBL-D M1415 x 2																		
SBL-D M1420 x 2																		
SBL-D M1425 x 2																		
SBL-D M1430 x 2																		
SBL-D M1435 x 2										190	26	180	M8 x 12	86	20	M10 x 6	35.0	421.6
SBL-D M1440 x 2																		
SBL-D M1445 x 2																		
SBL-D M1450 x 2																		
SBL-D M1455 x 2																		
SBL-D M1460 x 2																		
SBL-D M1465 x 2																		
SBL-D M1470 x 2																		
SBL-D M1475 x 2																		
SBL-D M1480 x 2																		
SBL-D M1485 x 2																		
SBL-D M1490 x 2																		
SBL-D M1495 x 2																		
SBL-D M1500 x 2																		



This model is for spindles with exceptionally restricted or narrow space, particularly where any adjustment from the trailing surface is inconvenient. Balance adjustment screw holes can be fitted with screw-in plugs (option), eliminating high frequency noise and subsequent vibration.

- Material Composition: SCM440(42CrMo4)
- Thread Precision: ISO 4H
- Edge Bevel: 0.002mm
- Hardness: HRC48° ~ 52°
- Parallelism: 0.002mm
- Concentricity: 0.005mm



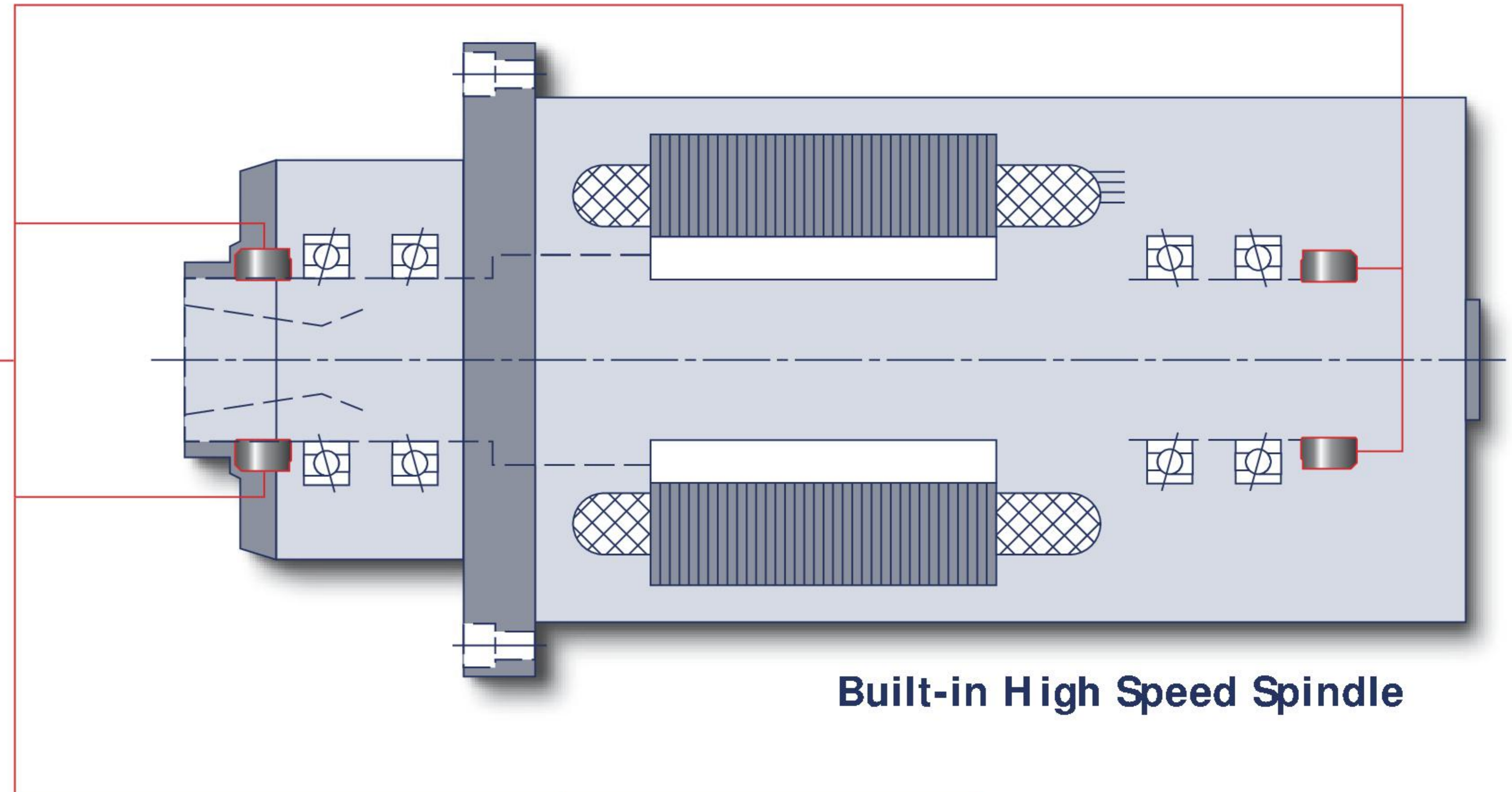
SBL-E

Thread	D	h	d	U x V	C	F	m x n	MAX.Nm	Loosening Torque Nm
SBL-E M20 x 1	32	10	27	M5 x 6	5	3	M5 x 3	4.5	24.0
SBL-E M20 x 1.5									
SBL-E M25 x 1.5	38	12	33	M5 x 9	6	4	M6 x 3	8.0	26.5
SBL-E M30 x 1.5									
SBL-E M35 x 1.5	45	14	40	M6 x 9	7	5	M6 x 3	8.0	28.4
SBL-E M40 x 1.5									
SBL-E M45 x 1.5	52	16	47	M6 x 12	8	6	M6 x 3	8.0	34.3
SBL-E M50 x 1.5									
SBL-E M55 x 2	58	18	52	M8 x 6	9	8	M8 x 6	18.0	36.3
SBL-E M60 x 2									
SBL-E M65 x 2	65	20	59	M8 x 12	10	9	M8 x 6	18.0	56.9
SBL-E M70 x 2									
SBL-E M75 x 2	70	22	64	M10 x 6	11	11	M10 x 6	35.0	63.7
SBL-E M80 x 2									
SBL-E M85 x 2	75	24	68	M10 x 6	12	14	M10 x 6	35.0	68.6
SBL-E M90 x 2									
SBL-E M95 x 2	80	26	73	M10 x 6	13	16	M10 x 6	35.0	96.1
SBL-E M100 x 2									
SBL-E M105 x 2	85	26	78	M10 x 6	13	16	M10 x 6	35.0	112.7
SBL-E M110 x 2									
SBL-E M115 x 2	92	26	84	M10 x 6	13	16	M10 x 6	35.0	137.3
SBL-E M120 x 2									
SBL-E M125 x 2	98	26	90	M10 x 6	13	16	M10 x 6	35.0	145.1
SBL-E M130 x 2									
SBL-E M135 x 2	105	26	96	M10 x 6	13	16	M10 x 6	35.0	149.0
SBL-E M140 x 2									
SBL-E M145 x 2	110	26	102	M10 x 6	13	16	M10 x 6	35.0	168.6
SBL-E M150 x 2									
SBL-E M150 x 2	120	20	108	M8 x 6	10	9	M8 x 6	18.0	178.4
SBL-E M150 x 2	125	20	113	M8 x 6	10	9	M8 x 6	18.0	193.1
SBL-E M150 x 2	130	20	118	M8 x 6	10	9	M8 x 6	18.0	210.8
SBL-E M150 x 2	140	22	125	M8 x 12	11	11	M8 x 12	18.0	215.7
SBL-E M150 x 2	145	22	132	M8 x 12	11	11	M8 x 12	18.0	230.4
SBL-E M150 x 2	150	22	137	M8 x 12	11	11	M8 x 12	18.0	250.0
SBL-E M150 x 2	155	22	142	M8 x 12	11	11	M8 x 12	18.0	264.7
SBL-E M150 x 2	160	24	147	M8 x 12	12	12	M8 x 12	18.0	274.5
SBL-E M150 x 2	165	24	152	M8 x 12	12	12	M8 x 12	18.0	294.1
SBL-E M150 x 2	175	24	160	M8 x 12	12	12	M8 x 12	18.0	328.4
SBL-E M150 x 2	180	26	165	M10 x 6	13	14	M10 x 6	35.0	372.5
SBL-E M150 x 2	190	26	175	M10 x 6	13	16	M10 x 6	35.0	402.0
SBL-E M150 x 2	195	26	180	M10 x 6	13	16	M10 x 6	35.0	421.6

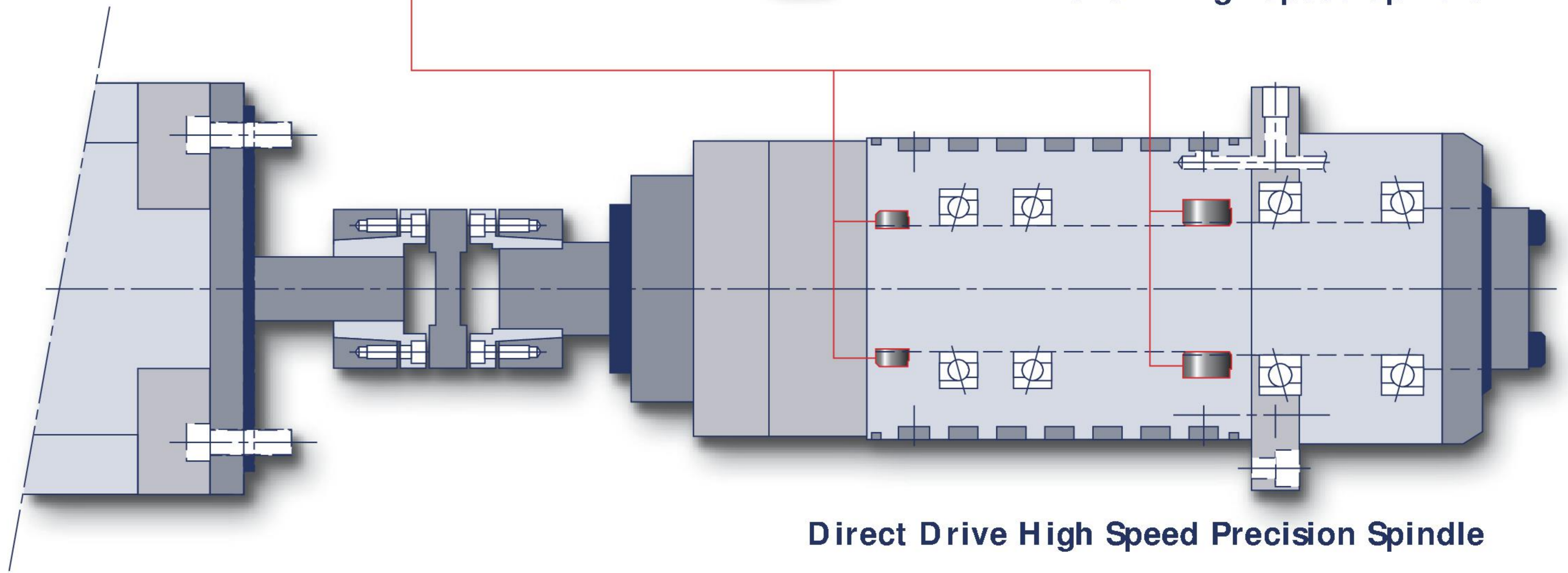


Diagram of Locknuts in Use

SBL Series
Superfine Balanced Locknuts



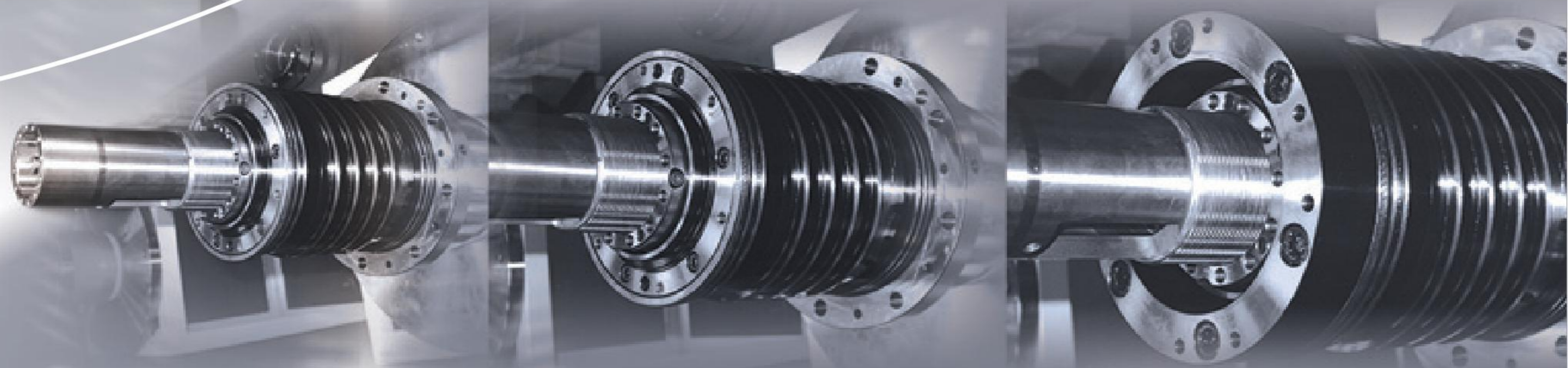
Built-in High Speed Spindle



Direct Drive High Speed Precision Spindle

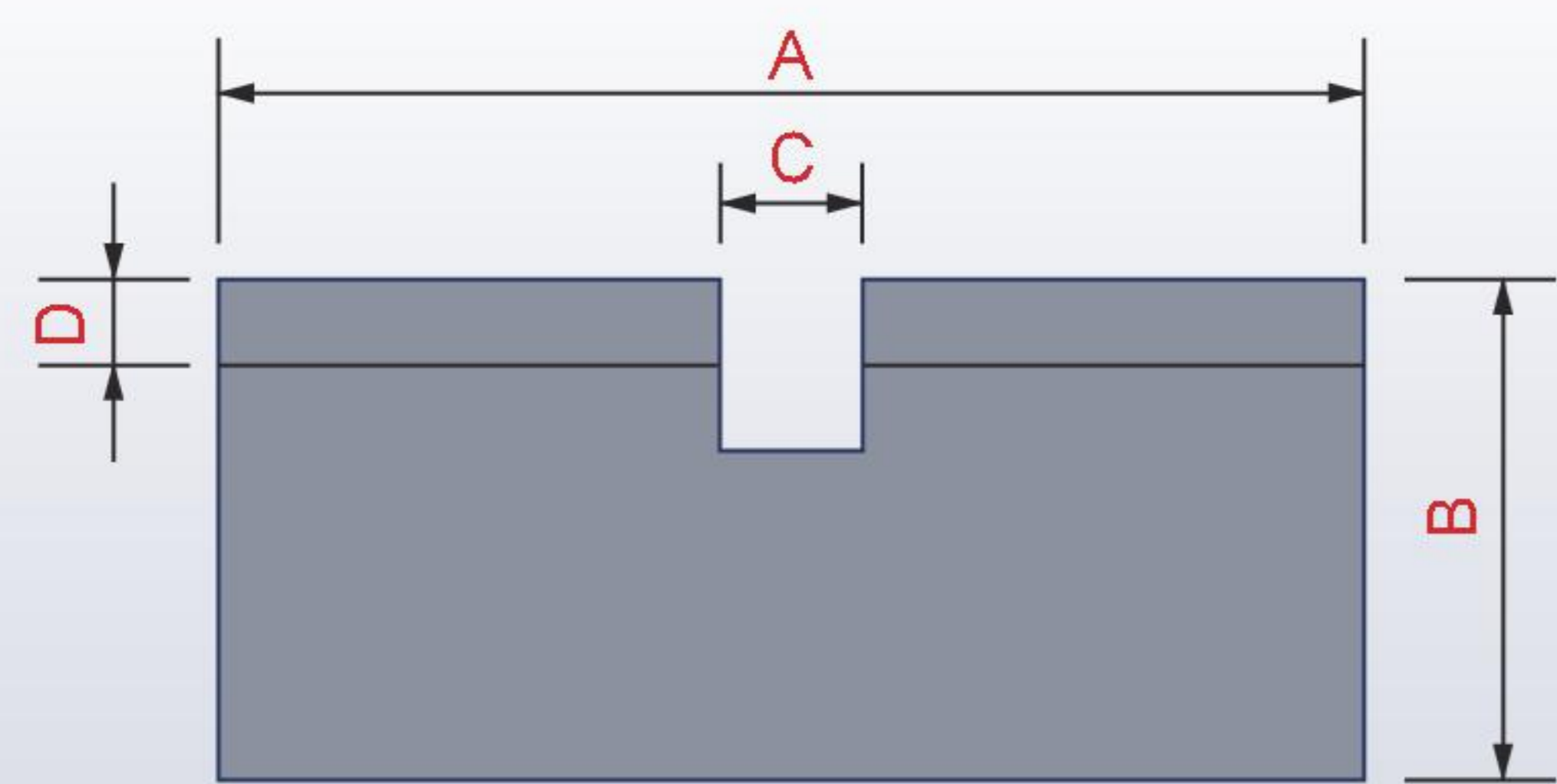


**ASSURING
ULTRA
QUIET
BALANCED
PERFORMANCE**

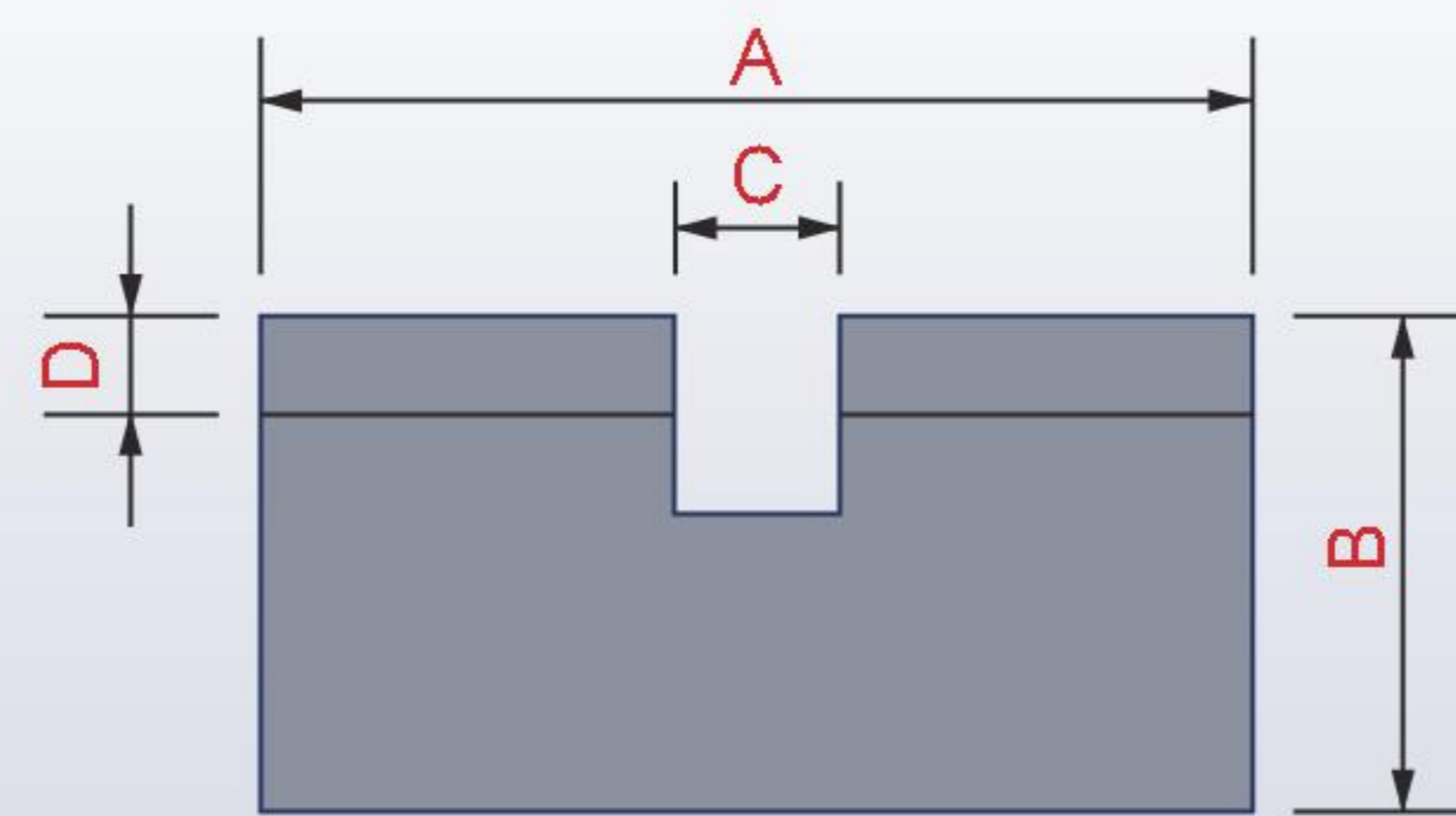


Noise Elimination Screw-in Plugs (Option)

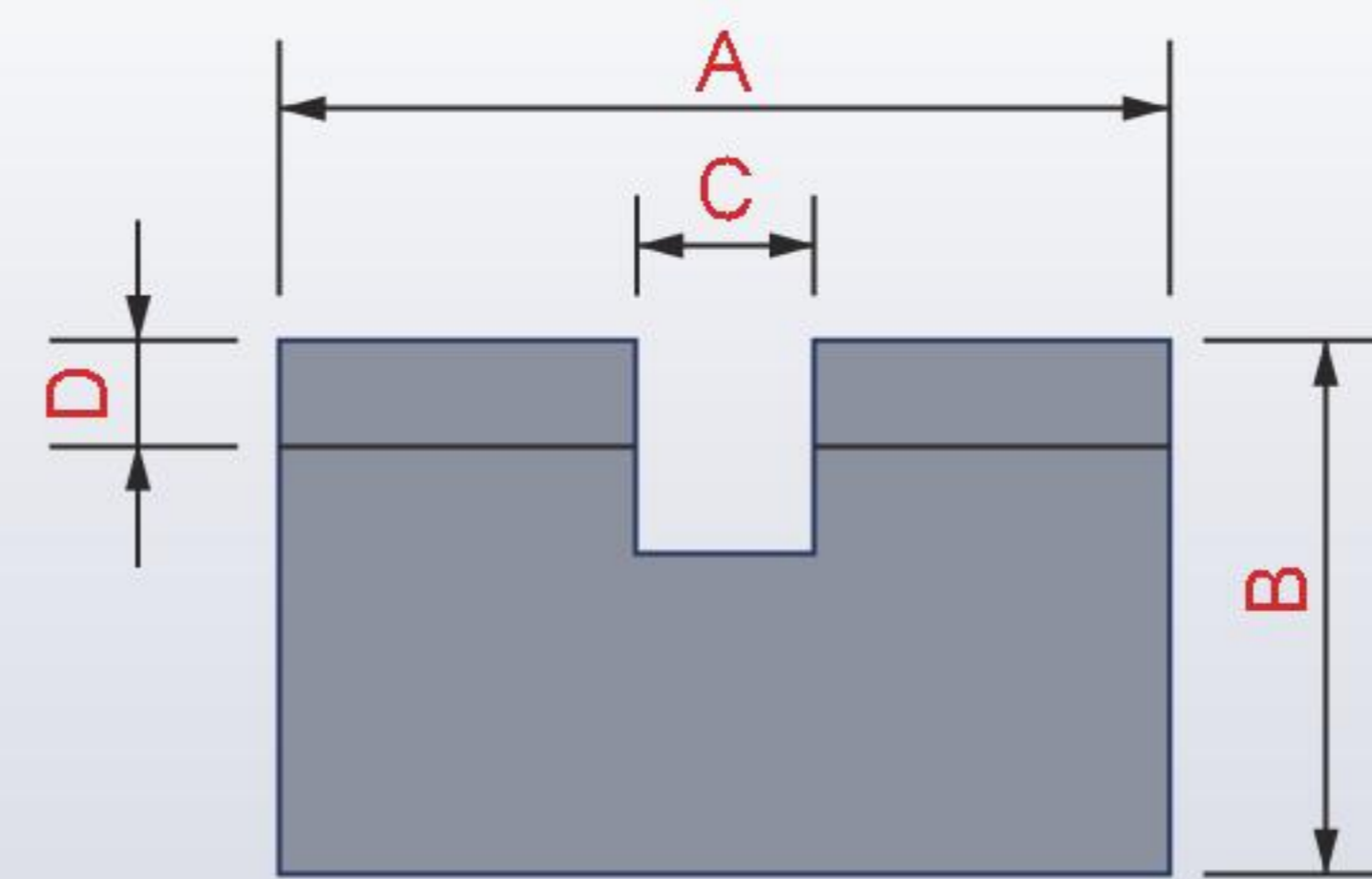
At high speeds, the threaded holes for lock or balance screws generate high frequency noise and subsequent vibration. Our answer to this is the noise elimination screw-in plugs (option). Made of Polycarbonate Fiber, these plugs are extremely light and stable. An added benefit is the elimination of any rust build up.



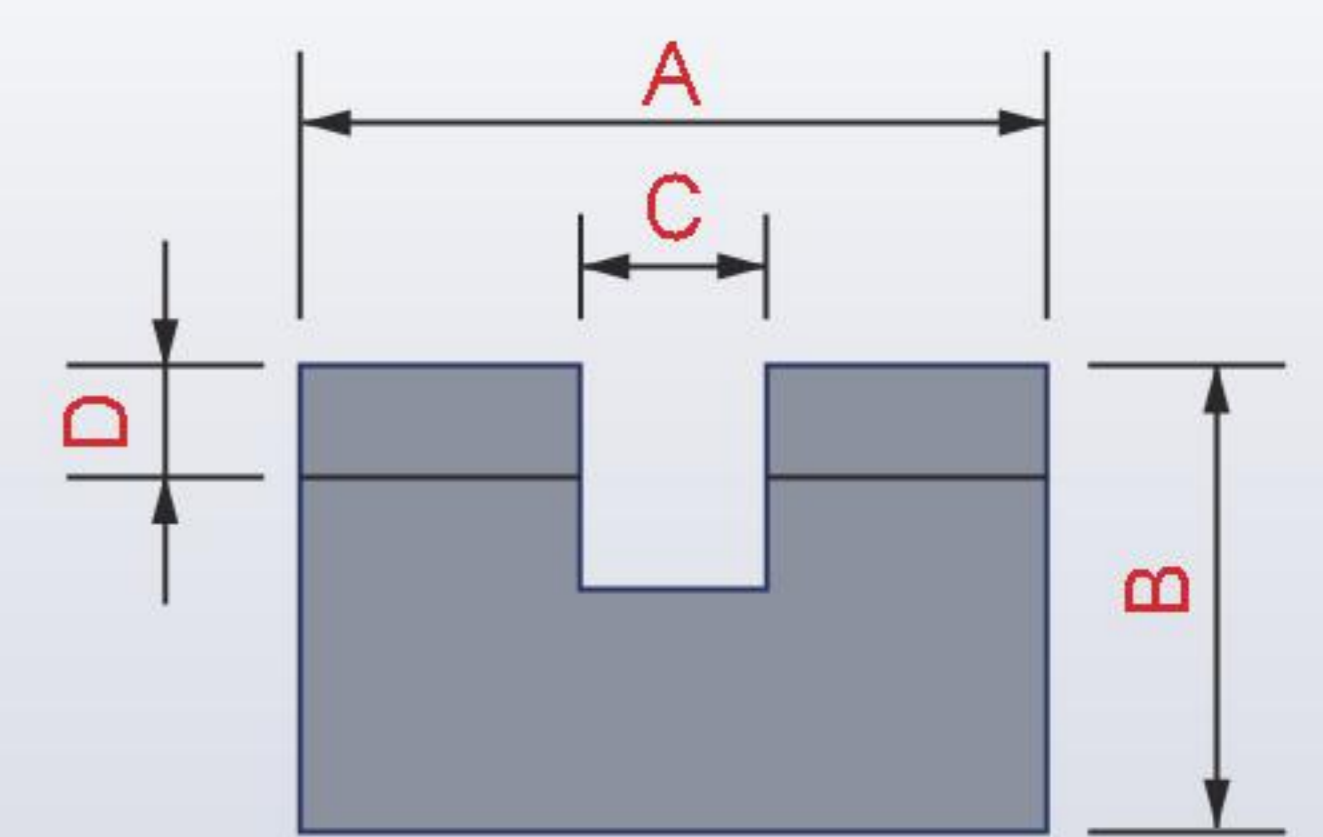
M8 x P1.25



M6 x P1



M5 x P0.8



M4 x P0.7

Noise Elimination Screw-in Plugs (Option) Specifications

A

B

C

D

Weight in Grams

M4 x P0.7

ø4

2.5

1.0

0.6

0.025

M5 x P0.8

ø5

3.0

1.0

0.6

0.045

M6 x P1

ø6

3.0

1.0

0.6

0.075

M8 x P1.25

ø8

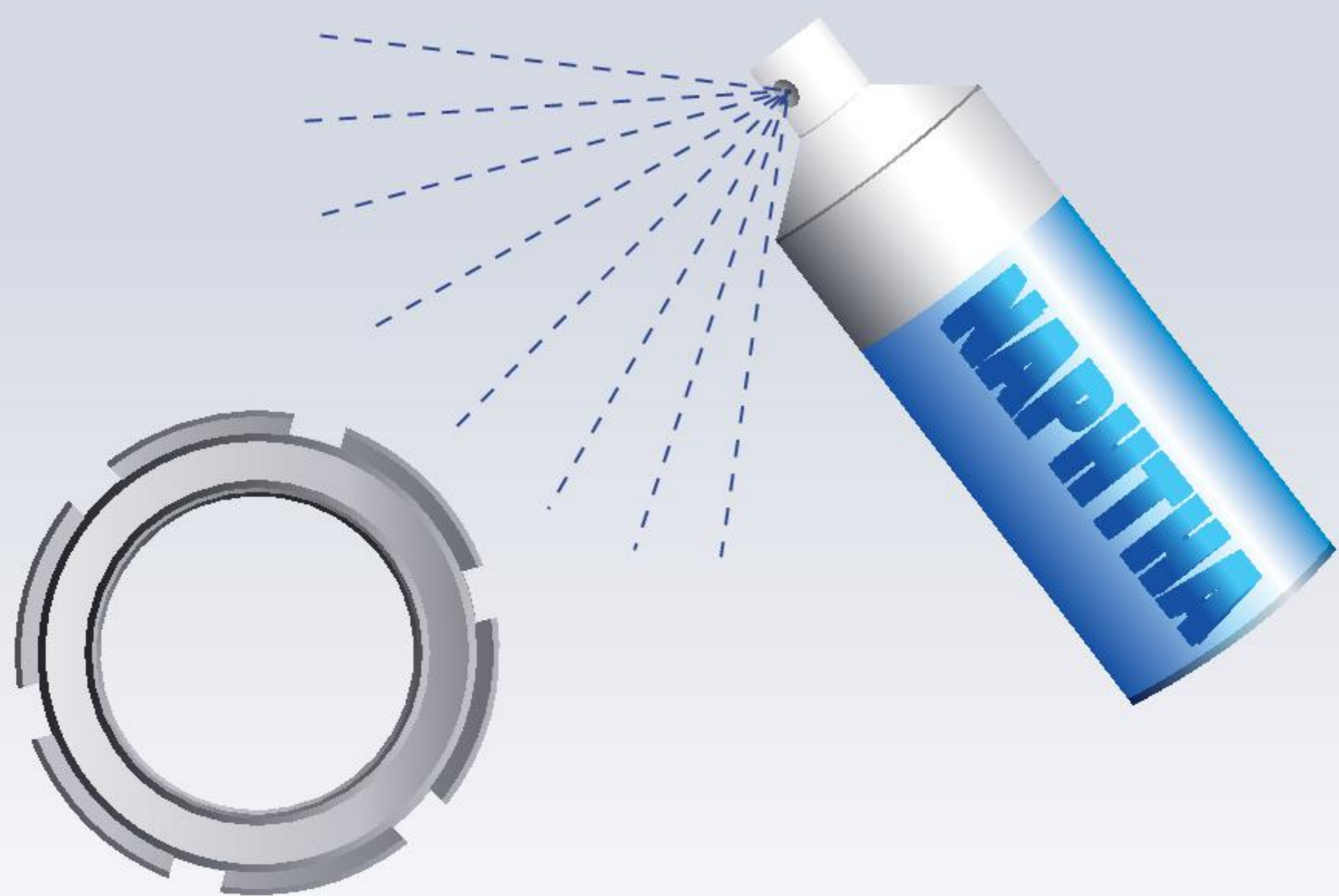
3.5

1.0

0.6

0.165

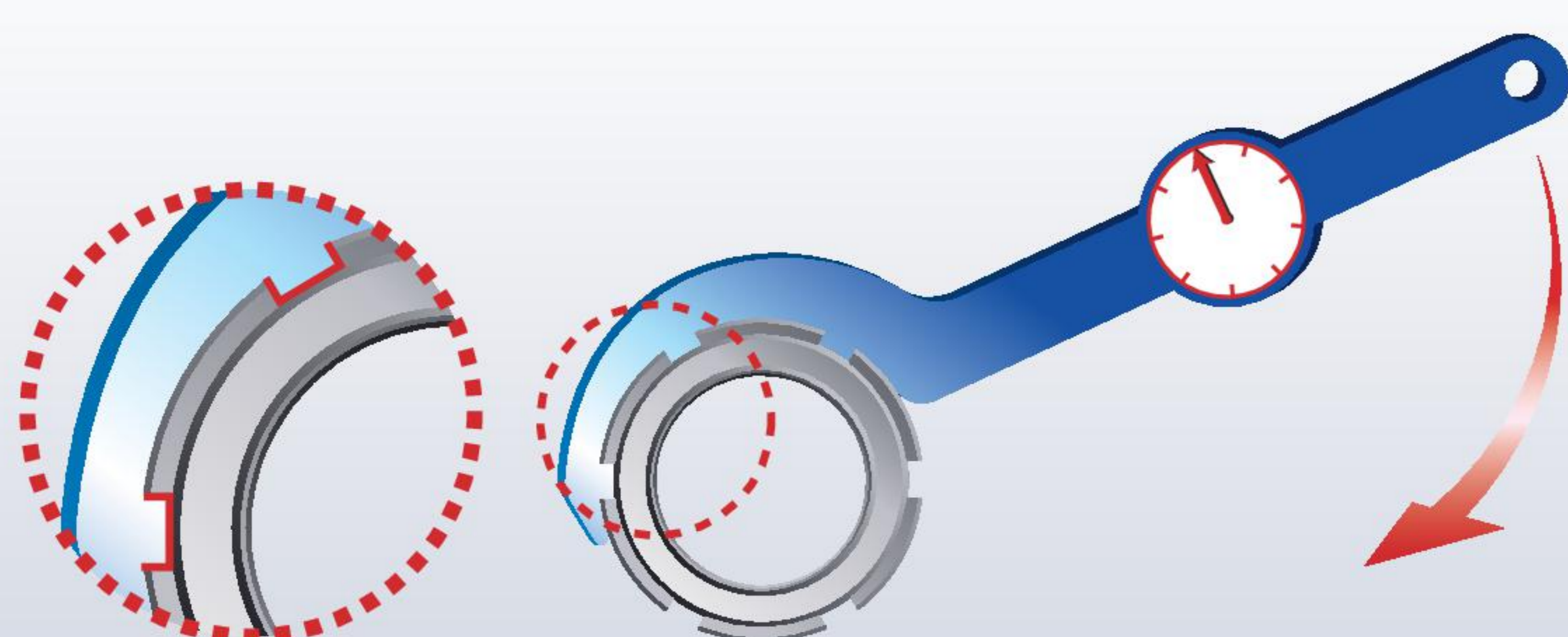
Specifics for Installation



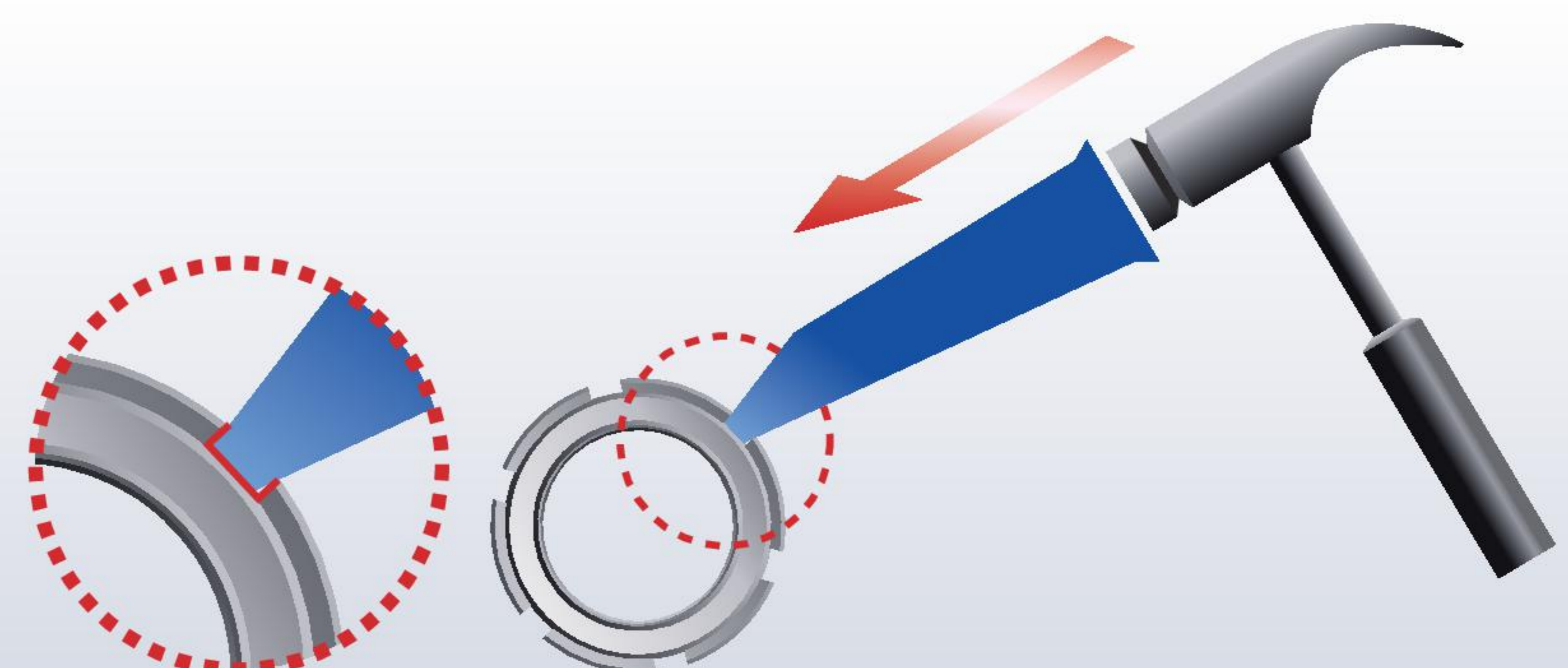
Clean the locknut with naphtha or appropriate industrial degreaser before installation.



Apply a small drop of lubricant to inner threads.

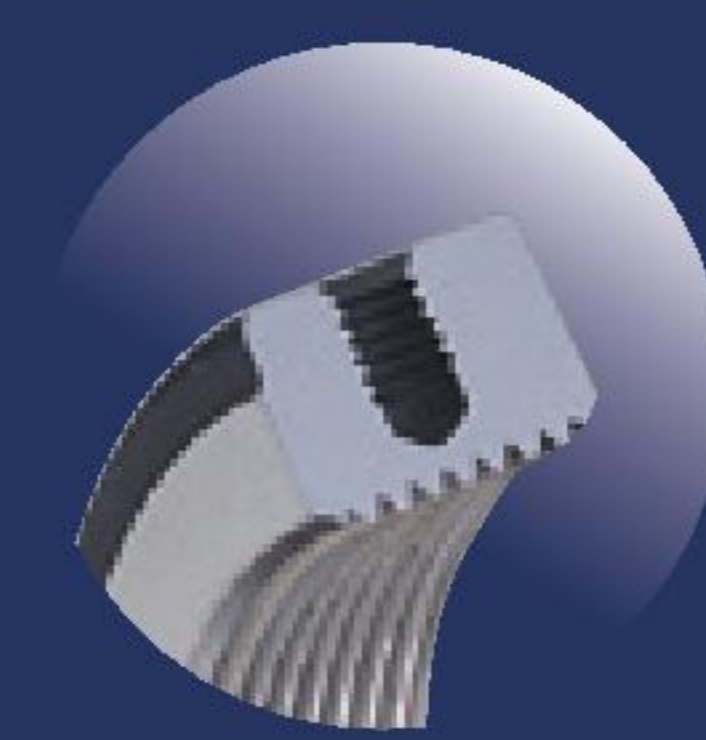
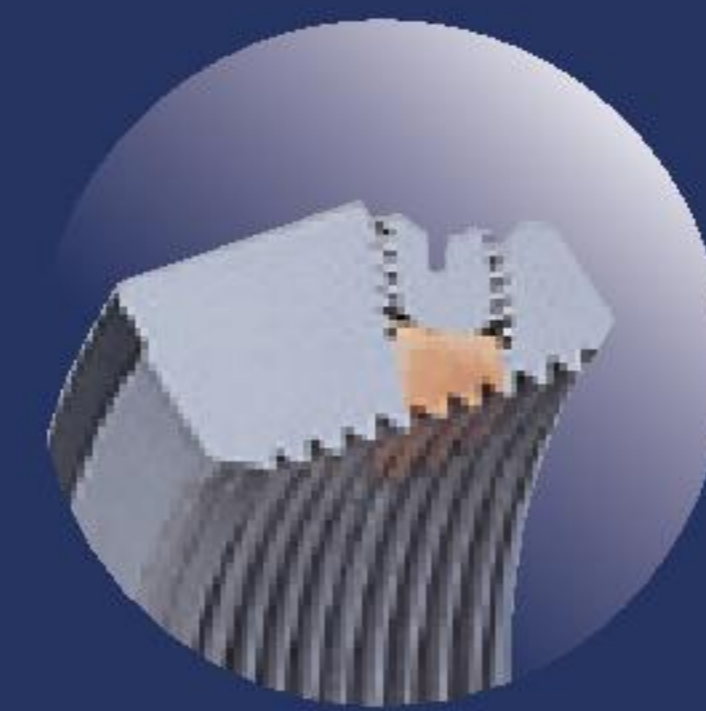


Use appropriate tools or spanner to set the correct preload.



Avoid applying direct pressure to any single point.





Scan Now!

YINSH PRECISION INDUSTRIAL CO., LTD.

No. 26, Lane 31, Chung Te 6 Rd., Sec. 1, Taichung, Taiwan 406

Tel: +886-4-2244-7899

E-mail: service@yinsh.com

Fax: +886-4-2245-2402

<http://www.yinsh.com>



**PRECISION
LOCKNUTS**



TUV NORD
ISO9001
ISO14001
OHSAS18001

