

ST series

DEEP HOLE DRILLING MACHINE

Bed Type

ST2000 / ST1500

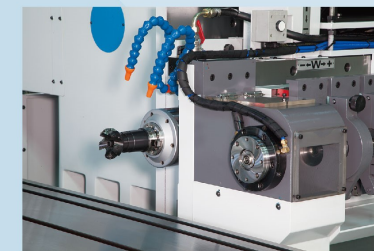
HONG JI

特性 Features :

- 此型數控深孔鑽孔機專門加工大型模具水道孔，模具頂出孔及射梢孔。
 - 寬厚高剛性立柱採用FC-32煉製並經退火處理，提供機台穩定加工。
 - 特殊快速刀具裝卸設計，大幅增加工作效率。
 - 另可加裝銑攻牙主軸及分度盤，提升機台複雜加工運用的能力。
- These types of machines with CNC control are designed for drilling waterlines, ejector pin holes of large injection molds.
 - The rigid honeycomb walled column gives a stable cutting condition. FC-32 castings have been stress relieved and annealed.
 - Special quick tool-changing design to increase work efficiency many times.
 - These types of machines also can be equipped with second spindle for milling & tapping and rotary table to increase machines' capacity for complex processes.



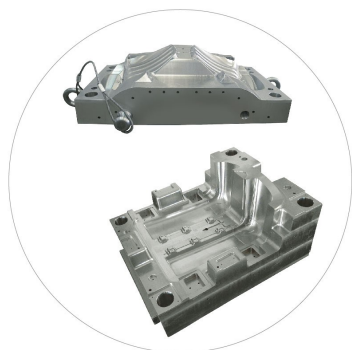
分度盤
CNC rotary table



銑攻主軸
Spindle for milling & tapping



全罩板金
Fully guard



規格 Specification	型號 Model	ST-2000	ST-1500
控制器 Controller	CNC	Fanuc / Mitsubishi / Siemens / Other	Fanuc / Mitsubishi / Siemens / Other
	主軸數 Spindle number	1	1
鑽孔能力 Drilling Capacity	鑽孔範圍 Drilling diameter	ø3-ø25mm(ø5-ø40mm)	ø3-ø25mm(ø5-ø40mm)
	鑽孔深度 Drilling depth (Z)	2,000mm	1,500mm
行程 Travel	X軸 Table cross travel (X)	2,200mm	1,600mm
	Y軸 Spindle vertical travel (Y)	1,200mm	1,000mm
	W軸 Column-moving travel (W) (Option)	500mm	400mm
速度 Speed	進給速 Drilling feed	10-250mm/min	10-250mm/min
	主軸轉速 Spindle rpm	0~6,000	0~6,000
	切削油壓 Pressure	0~100kg/cm ²	0~100kg/cm ²
高壓油泵 High pressure pump	出油量 Outflow	30~100L/min	30~100L/min
	油箱 Oil tank	1,500L	1,500L
工作台 Worktable	工作台尺寸 Table dimensions	1,600x2,600mm	1,300x1,800mm
	最大載重 Maximum loading weight	15,000kgs	10,000kgs
	其他功能 Optional function	Milling & Tapping (銑/攻牙)	Milling & Tapping (銑/攻牙)
其他 Other	其他配件 Optional accessories	Rotary table (分度盤)	Rotary table (分度盤)
	機台重量 Machine weight (kg)	23,000kg	19,000kg
	機台尺寸 Machine dimensions (including accessories)	7100x7000x3500mm	6800x6300x3500mm