

Automatic  
Tool  
Changer **ATC**

*We honor the aged wisdom of precision !*

Automatic  
Tool  
Changer **ATC**



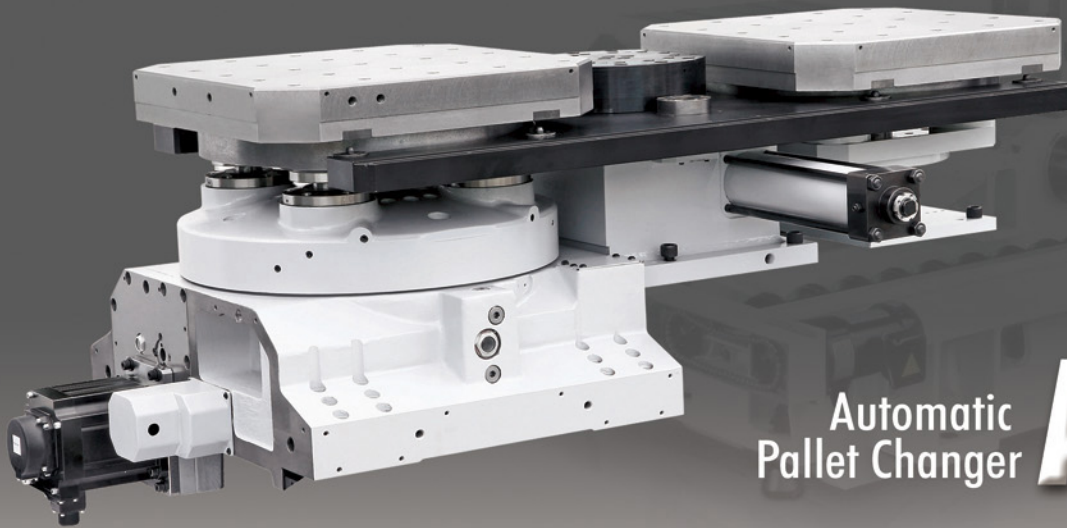
Automatic  
Pallet Changer **APC**



歐  
權  
科  
技

Professional  
Manufactured

Automatic  
Tool  
Changer **ATC**

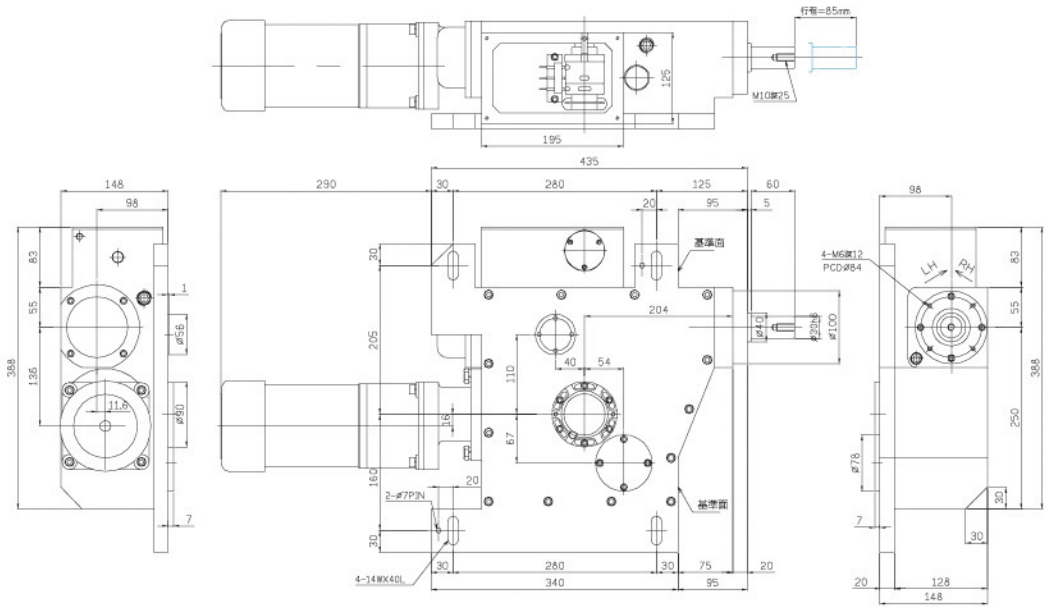


Automatic  
Pallet Changer **APC**

## BT30 Automatic Tool Changer (ATC series)

001 系列 SERIES

立式自動換刀機構

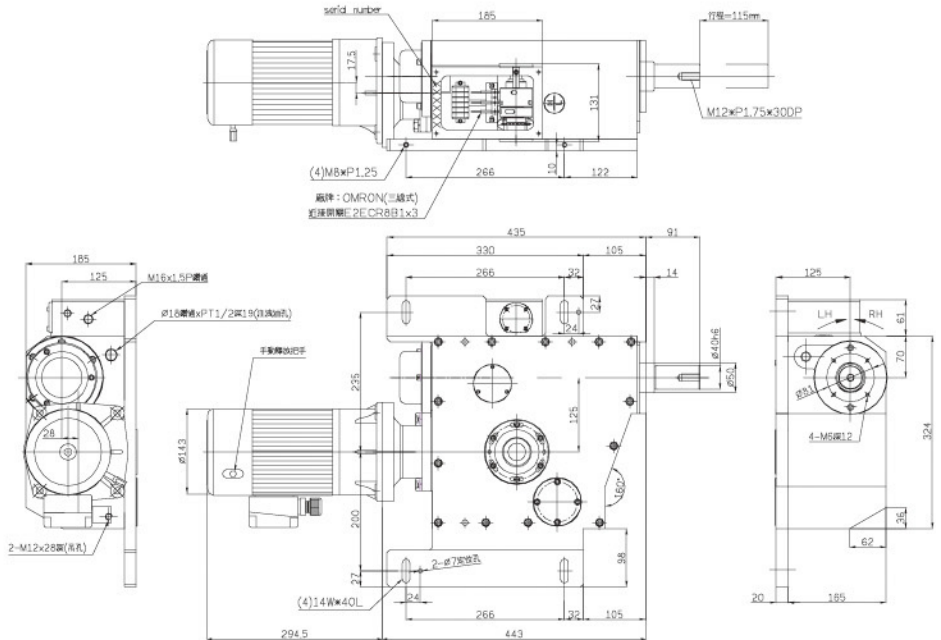


換刀時間 TOOL CHANGE TIME	拉刀行程 STROKE OF ARM LIFTING	最大荷重 MAX LOAD	精度 ACCURACY	驅動馬力 POWER OF MOTOR	製品重量 MACHINE WEIGHT
50Hz=0.99sec (4kg/側) 50Hz=0.99sec (4kg/side) 60Hz=0.84sec (4kg/側) 60Hz=0.84sec (4kg/side)	85mm	4.5kg/單側 4.5kg/single side (依換刀時間快慢而定 According to tool changing time)	分割精度 60" Index Accuracy 重複精度 10" Repeatability 行程精度 0.1mm Stroke Accuracy	1/3HP	90kg

## BT40 Automatic Tool Changer (ATC series)

002 系列 SERIES

立式自動換刀機構

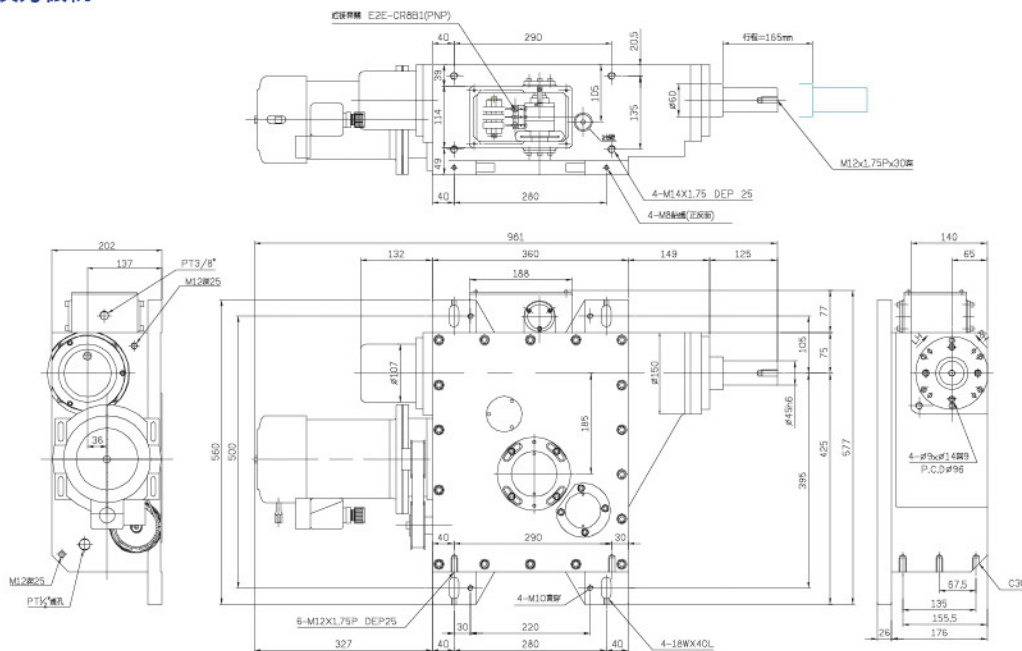


換刀時間 TOOL CHANGE TIME	拉刀行程 STROKE OF ARM LIFTING	最大荷重 MAX LOAD	精度 ACCURACY	驅動馬力 POWER OF MOTOR	製品重量 MACHINE WEIGHT
50Hz=1.55sec (8kg/側) 50Hz=1.55sec (8kg/side) 60Hz=1.31sec (8kg/側) 60Hz=1.31sec (8kg/side)	115mm	8kg/單側 8kg/single side (依換刀時間快慢而定 According to tool changing time)	分割精度 60" Index Accuracy 重複精度 10" Repeatability 行程精度 0.1mm Stroke Accuracy	3/4HP	115kg

# BT50 Automatic Tool Changer (ATC series)

003 系列 SERIES

立式自動換刀機構



換刀時間 TOOL CHANGE TIME	拉刀行程 STROKE OF ARM LIFTING	最大荷重 MAX LOAD	精度 ACCURACY	驅動馬力 POWER OF MOTOR	製品重量 MACHINE WEIGHT
50Hz=2.91sec (17kg/側) 50Hz=2.91sec (17kg/side) 60Hz=2.45sec (17kg/側) 60Hz=2.45sec (17kg/side)	165mm	20kg/單側 20kg/single side (依換刀時間快慢而定 According to tool changing time)	分割精度 60" Index Accuracy 重複精度 10" Repeatability 行程精度 0.1mm Stroke Accuracy	1.5HP	200kg

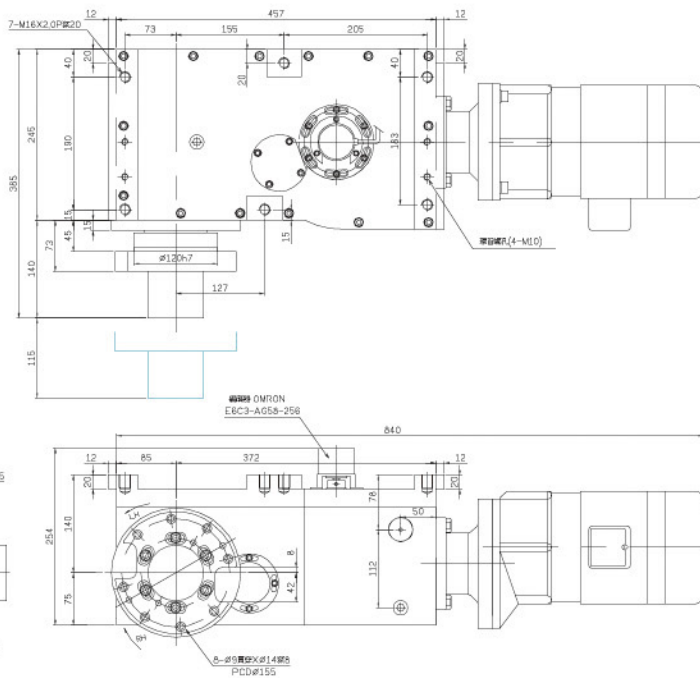
# BT40 Automatic Tool Changer (ATC series)

042 臥式系列

臥式自動換刀機構



HORIZONTAL SERIES



換刀時間 TOOL CHANGE TIME	拉刀行程 STROKE OF ARM LIFTING	最大荷重 MAX LOAD	精度 ACCURACY	驅動馬力 POWER OF MOTOR	製品重量 MACHINE WEIGHT
50Hz=1.98sec (7kg/側) 50Hz=1.98sec (7kg/side) 60Hz=1.61sec (7kg/側) 60Hz=1.61sec (7kg/side)	115mm	8kg/單側 8kg/single side (依換刀時間快慢而定 According to tool changing time)	分割精度 60" Index Accuracy 重複精度 10" Repeatability 行程精度 0.1mm Stroke Accuracy	1.5HP	160kg

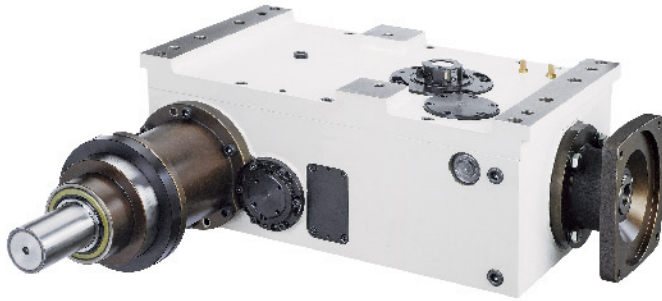




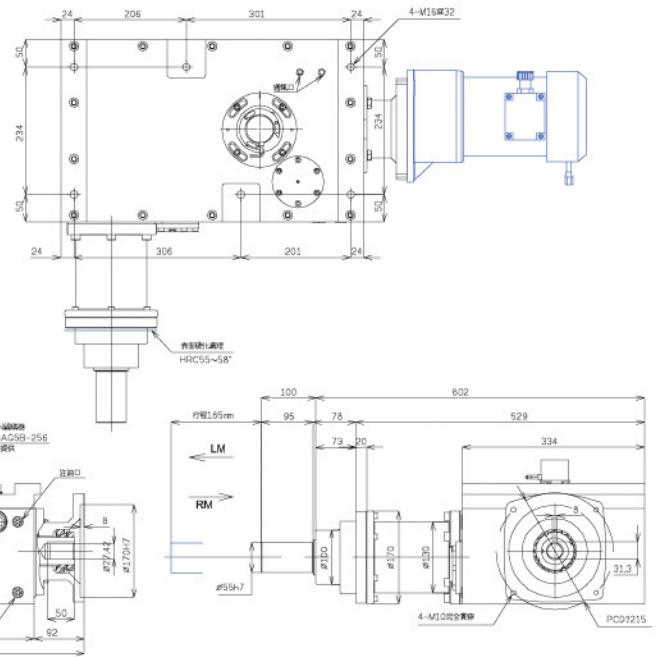
## BT50 044 臥式系列

### Automatic Tool Changer (ATC series)

臥式自動換刀機構



HORIZONTAL SERIES



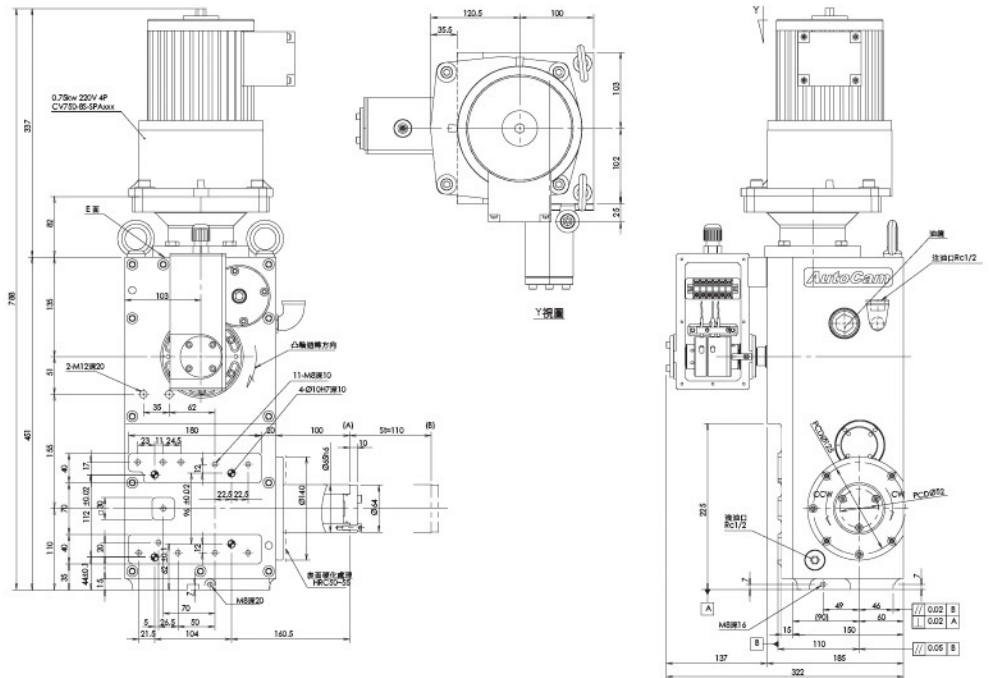
TECHNOLOGY  
HIGH PRECISION  
HIGH QUALITY

換刀時間 TOOL CHANGE TIME	拉刀行程 STROKE OF ARM LIFTING	最大荷重 MAX LOAD	精度 ACCURACY	驅動馬力 POWER OF MOTOR	製品重量 MACHINE WEIGHT
50Hz=3.4sec (15kg/側) 50Hz=3.4sec (15kg/side) 60Hz=2.9sec (15kg/側) 60Hz=2.9sec (15kg/side)	165mm	20kg/單側 20kg/single side (依換刀時間快慢而定 According to tool changing time)	分割精度 60° Index Accuracy 重複精度 10° Repeatability 行程精度 0.1mm Stroke Accuracy	2HP	90kg

## BT40 005 系列 SERIES

### Automatic Tool Changer (ATC series)

臥式自動換刀機構



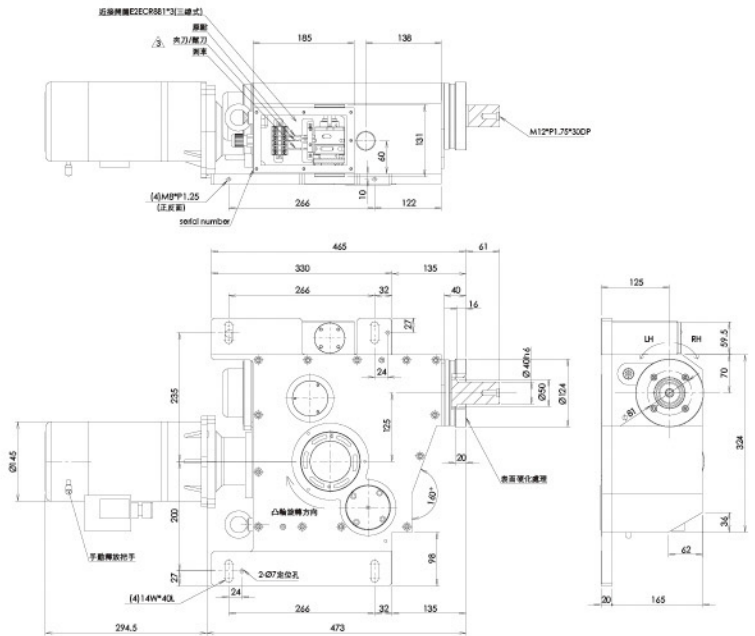
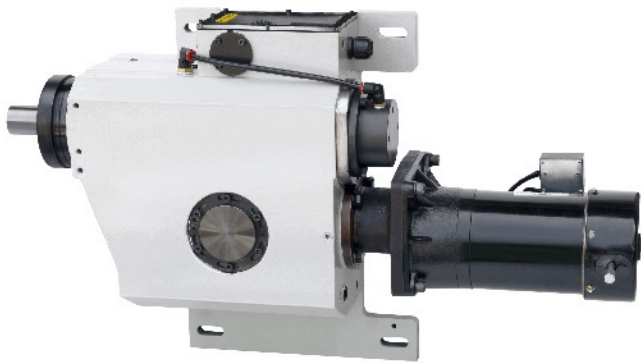
換刀時間 TOOL CHANGE TIME	拉刀行程 STROKE OF ARM LIFTING	最大荷重 MAX LOAD	精度 ACCURACY	驅動馬力 POWER OF MOTOR	製品重量 MACHINE WEIGHT
60Hz=1.15sec (15kg/側) 60Hz=1.15sec (15kg/side)	115mm	8 kg/單側 8 kg/single side (依換刀時間快慢而定 According to tool changing time)	分割精度 60° Index Accuracy	1HP	100kg

# BT40

002 系列 SERIES

## Automatic Tool Changer (ATC series)

臥式自動換刀機構



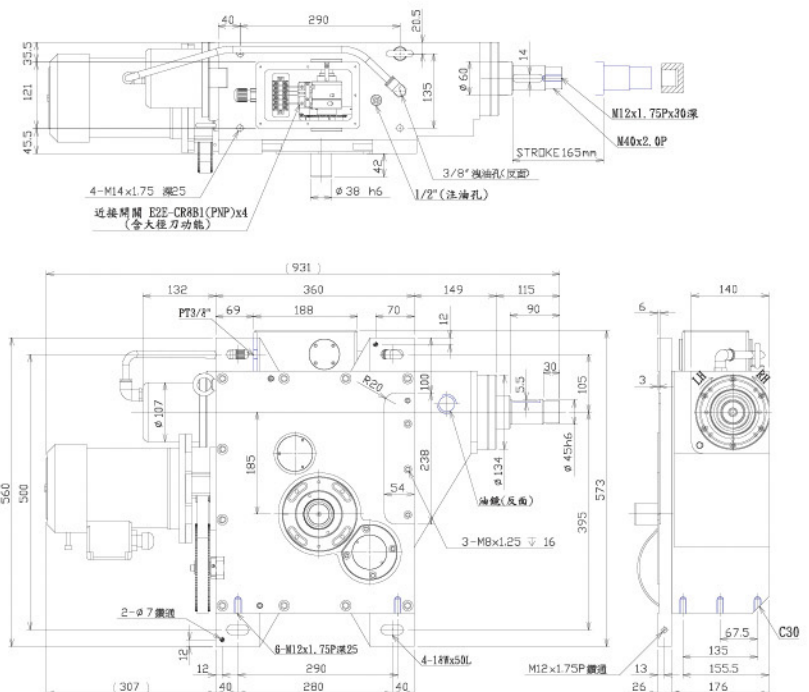
換刀時間 TOOL CHANGE TIME	拉刀行程 STROKE OF ARM LIFTING	最大荷重 MAX LOAD	精度 ACCURACY	驅動馬力 POWER OF MOTOR	製品重量 MACHINE WEIGHT
50Hz=1.55sec (8kg/側) 50Hz=1.55sec (8kg/side) 60Hz=1.31sec (8kg/側) 60Hz=1.31sec (8kg/side)	115mm	8kg/單側 8kg/single side (依換刀時間快慢而定 According to tool changing time)	分割精度 60" Index Accuracy 重複精度 10" Repeatability 行程精度 0.1mm Stroke Accuracy	3/4HP	115kg

# BT50

003 系列 SERIES

## Automatic Tool Changer (ATC series)

臥式自動換刀機構



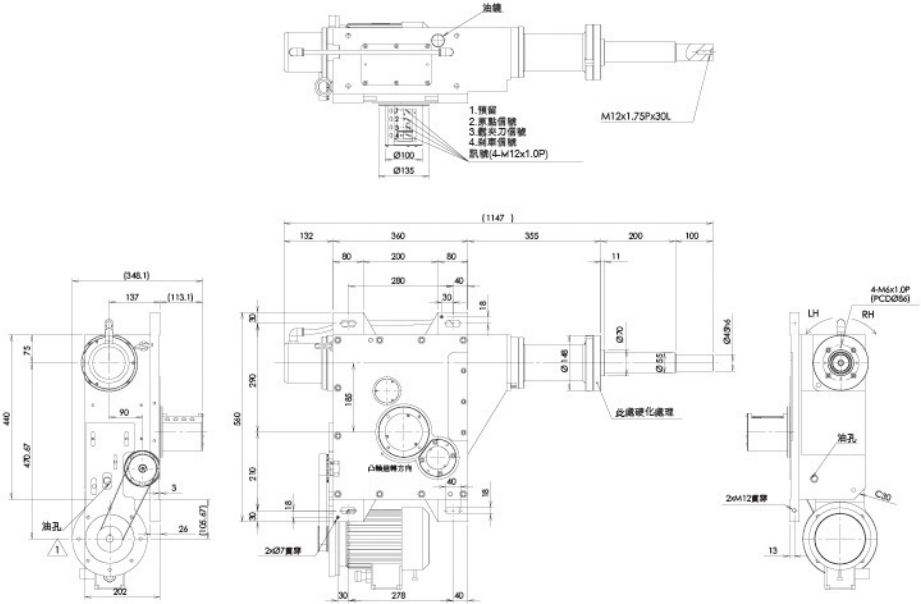
換刀時間 TOOL CHANGE TIME	拉刀行程 STROKE OF ARM LIFTING	最大荷重 MAX LOAD	精度 ACCURACY	驅動馬力 POWER OF MOTOR	製品重量 MACHINE WEIGHT
50Hz=2.91sec (17kg/側) 50Hz=2.91sec (17kg/side) 60Hz=2.45sec (17kg/側) 60Hz=2.45sec (17kg/side)	165mm	20kg/單側 20kg/single side (依換刀時間快慢而定 According to tool changing time)	分割精度 60" Index Accuracy 重複精度 10" Repeatability 行程精度 0.1mm Stroke Accuracy	1.5HP	200kg



## BT50 Automatic Tool Changer (ATC series)

003 龍門系列

倒立式換刀機構



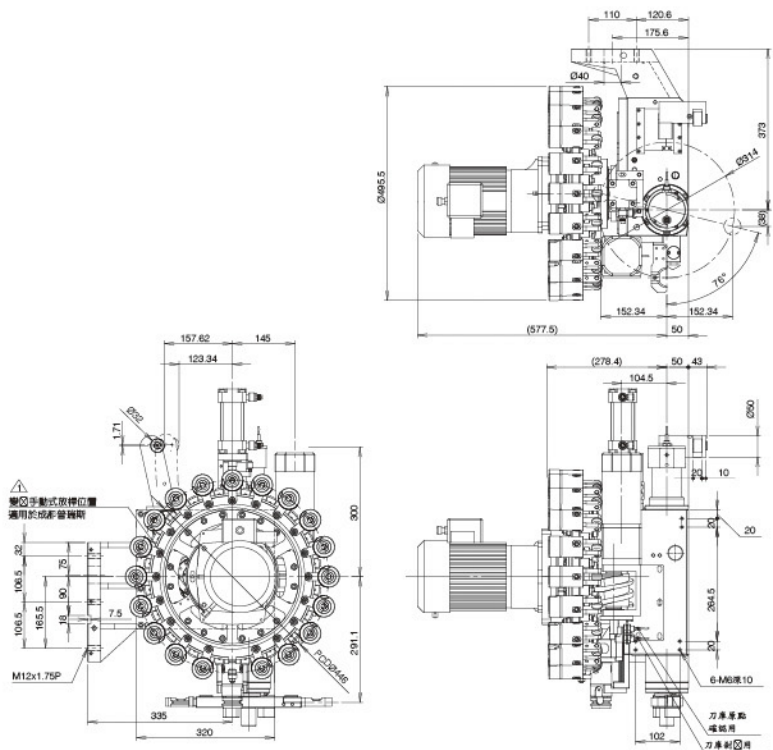
換刀時間 TOOL CHANGE TIME	拉刀行程 STROKE OF ARM LIFTING	最大荷重 MAX LOAD	精度 ACCURACY	驅動馬力 POWER OF MOTOR	製品重量 MACHINE WEIGHT
50Hz=3.4sec (15kg/側) 50Hz=3.4sec (15kg/side) 60Hz=2.9sec (15kg/側) 60Hz=2.9sec (15kg/side)	165mm	20kg/單側 20kg/single side (依換刀時間快慢而定 According to tool changing time)	分割精度 60° Index Accuracy 重複精度 10° Repeatability 行程精度 0.1mm Stroke Accuracy	2HP	90kg

## 3020A

005 系列 SERIES

### Mechanical Synchronous Unclamping Mechanish

機械式同動打刀



換刀時間 TOOL CHANGE TIME	拉刀行程 STROKE OF ARM LIFTING	刀把規格 TOOL TYPE	打刀角度 OUTPUT ANGLE OF UNCLAMPING	刀具數量 TOOL CAPACITY	刀具最大外徑 MAX TOOL DIAMETER	扣刀角度 ANGLE OF TAKING TOOL
60Hz=0.86sec	85mm	BT30/CAT/pin	10.33°	20	鄰刀: Ø62 Neighbor tool 鄰空刀: Ø130 Neighbor empty	82°

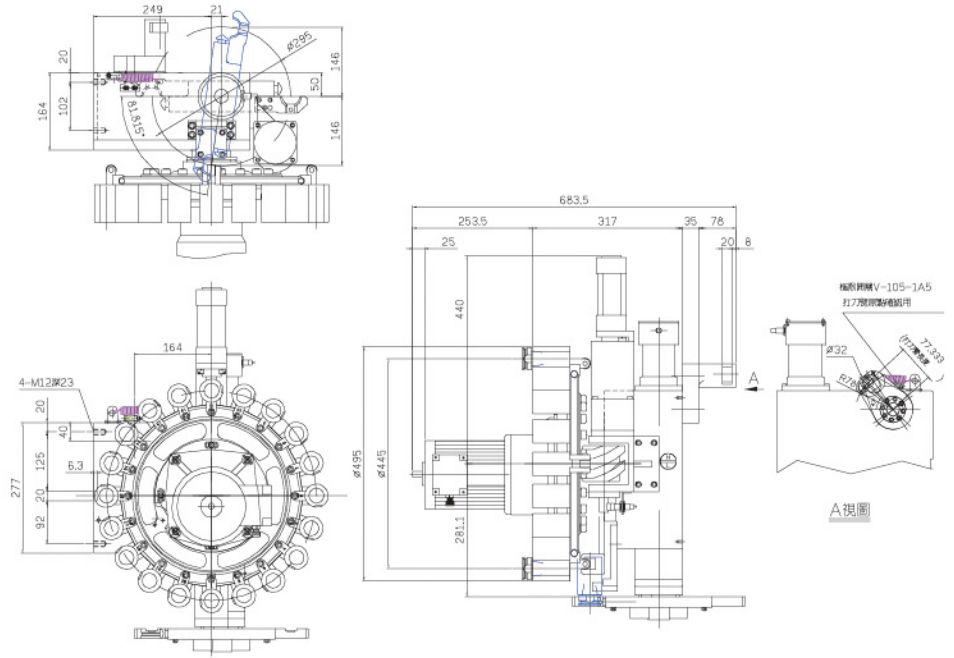
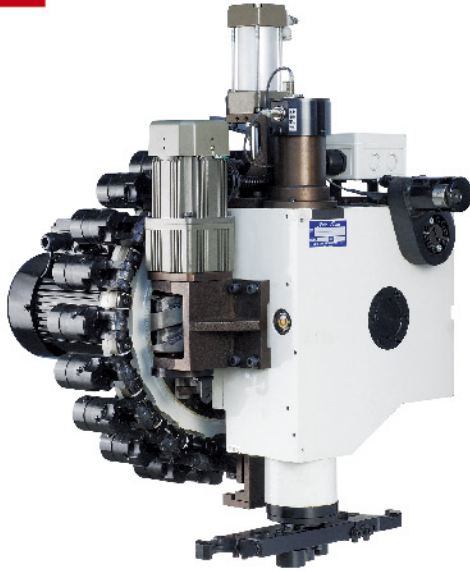


# 3020B

005 系列 SERIES

## Mechanical Synchronous Unclamping Mechanism

機械式同動打刀



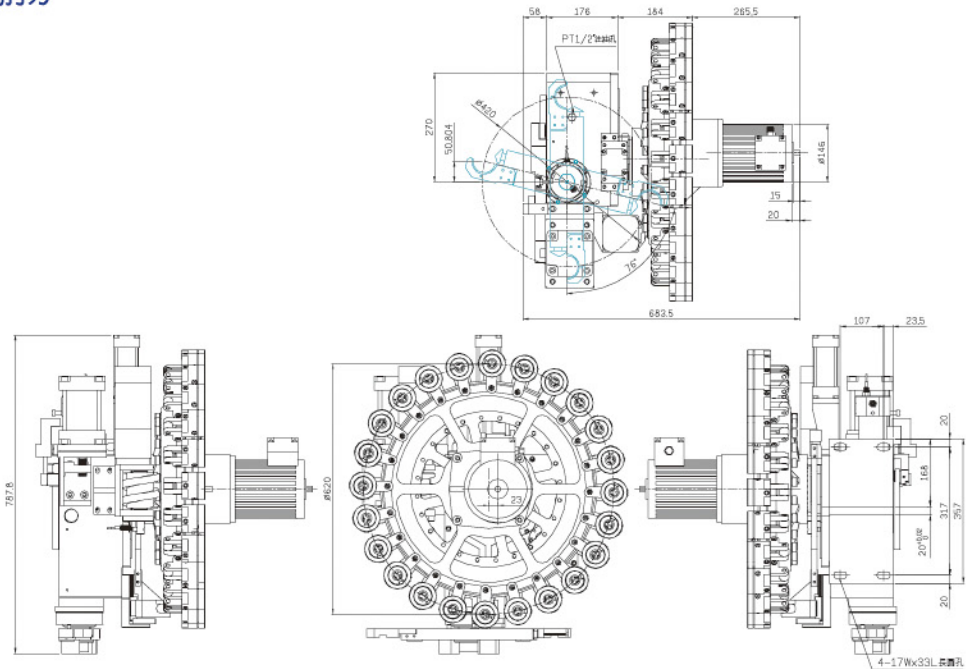
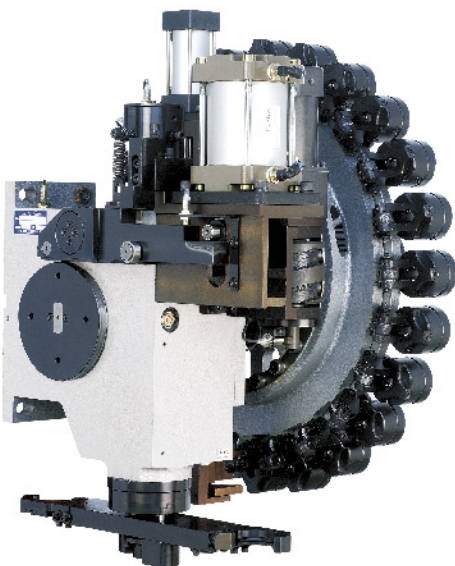
換刀時間 TOOL CHANGE TIME	拉刀行程 STROKE OF ARM LIFTING	刀把規格 TOOL TYPE	打刀角度 OUTPUT ANGLE OF UNCLAMPING	刀具數量 TOOL CAPACITY	刀具最大外徑 MAX TOOL DIAMETER	扣刀角度 ANGLE OF TAKING TOOL
60Hz=0.86sec	85mm	BT30/CAT/pin	10.33°	20	鄰刀: Ø62 Neighbor tool 鄰空刀: Ø130 Neighbor empty	82°

# HSK63

009 系列 SERIES

## Mechanical Synchronous Unclamping Mechanism

機械式同動打刀

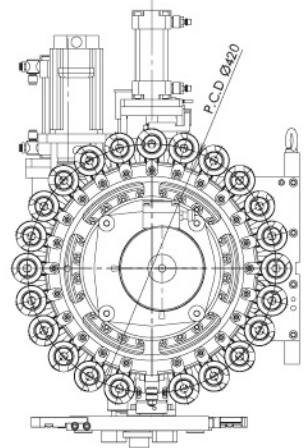
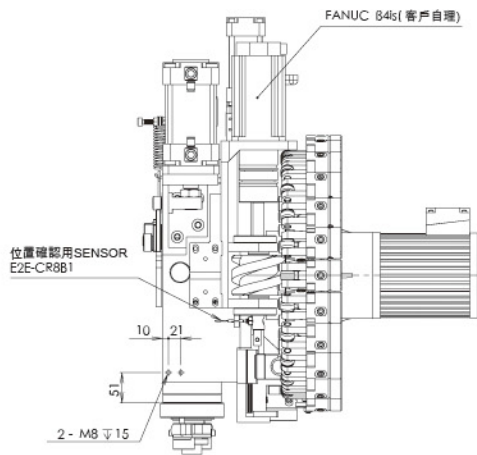
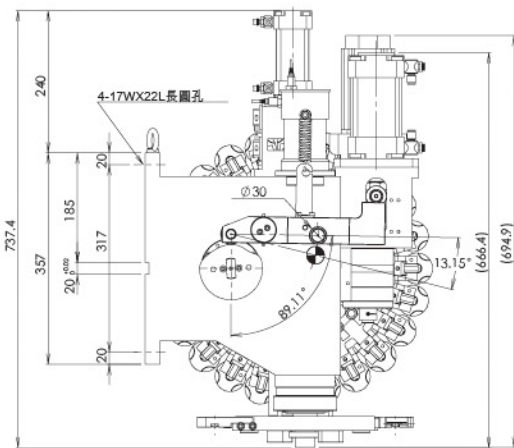
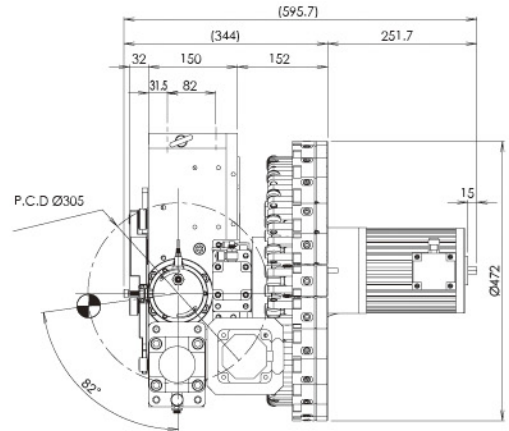
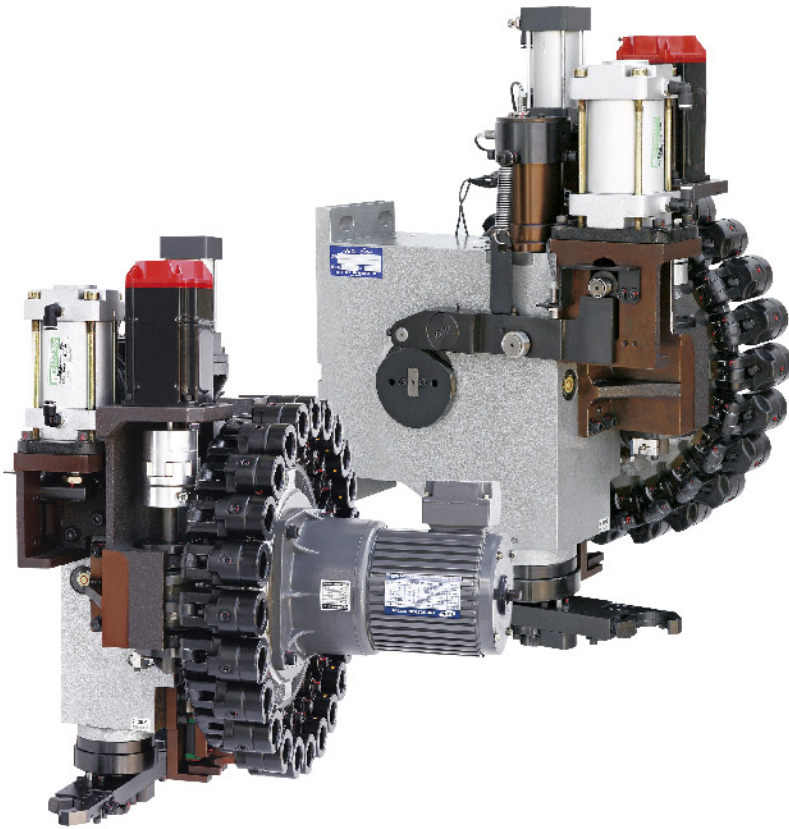


換刀時間 TOOL CHANGE TIME	拉刀行程 STROKE OF ARM LIFTING	刀具數量 TOOL CAPACITY	刀具最大外徑 MAX TOOL DIAMETER	扣刀角度 ANGLE OF TAKING TOOL
60Hz=0.87sec	115mm	24	鄰刀: Ø80 Neighbor tool 鄰空刀: Ø160 Neighbor empty	76°

## HSK40 Mechanical Synchronous Unclamping Mechanism

008 系列 SERIES

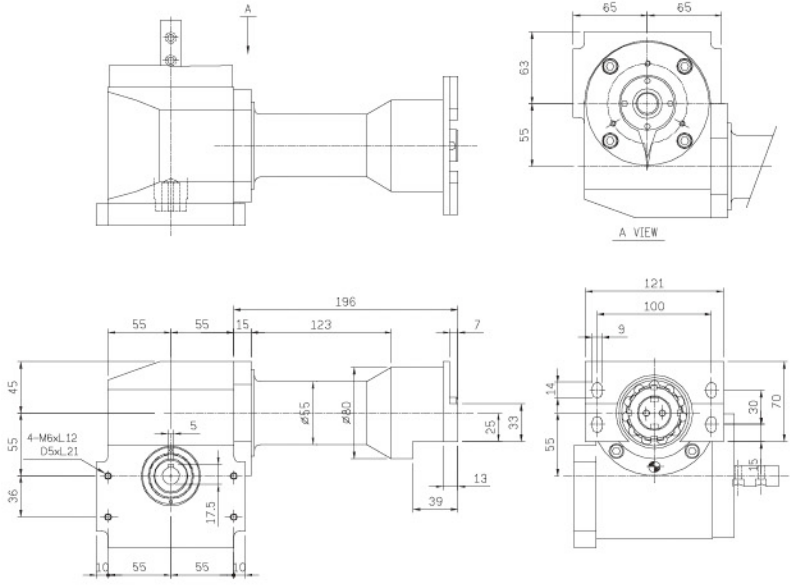
機械式同動打刀



換刀時間 TOOL CHANGE TIME	拉刀行程 STROKE OF ARM LIFTING	最大荷重 MAX LOAD	精度 ACCURACY	驅動馬力 POWER OF MOTOR	製品重量 MACHINE WEIGHT
50Hz=1.98sec (7kg/側) 50Hz=1.98sec (7kg/side) 60Hz=1.61sec (7kg/側) 60Hz=1.61sec (7kg/side)	115mm	8kg/單側 8kg/single side (依換刀時間快慢而定 According to tool changing time)	分割精度 60° Index Accuracy 重複精度 10° Repeatability 行程精度 0.1mm Stroke Accuracy	1.5HP	160kg

# BT30 Tapping Center Type

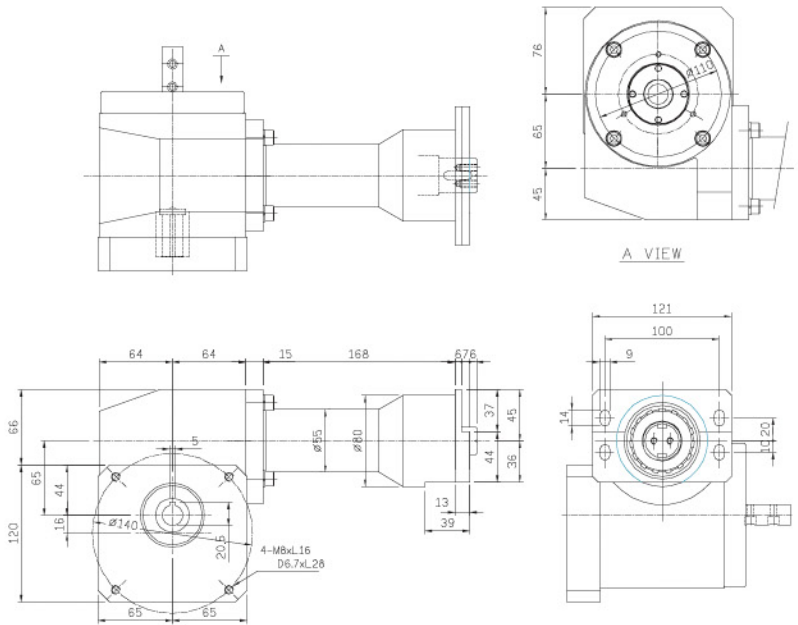
O10系列 SERIES 傘型刀庫用分割器



分割數 INDEX NUMBER	運動曲線 MOTION CURVE
3分割 3 index	MS曲線 Modified trapezoid motion curve

# BT40 Tapping Center Type

O11 系列 SERIES 傘型刀庫用分割器

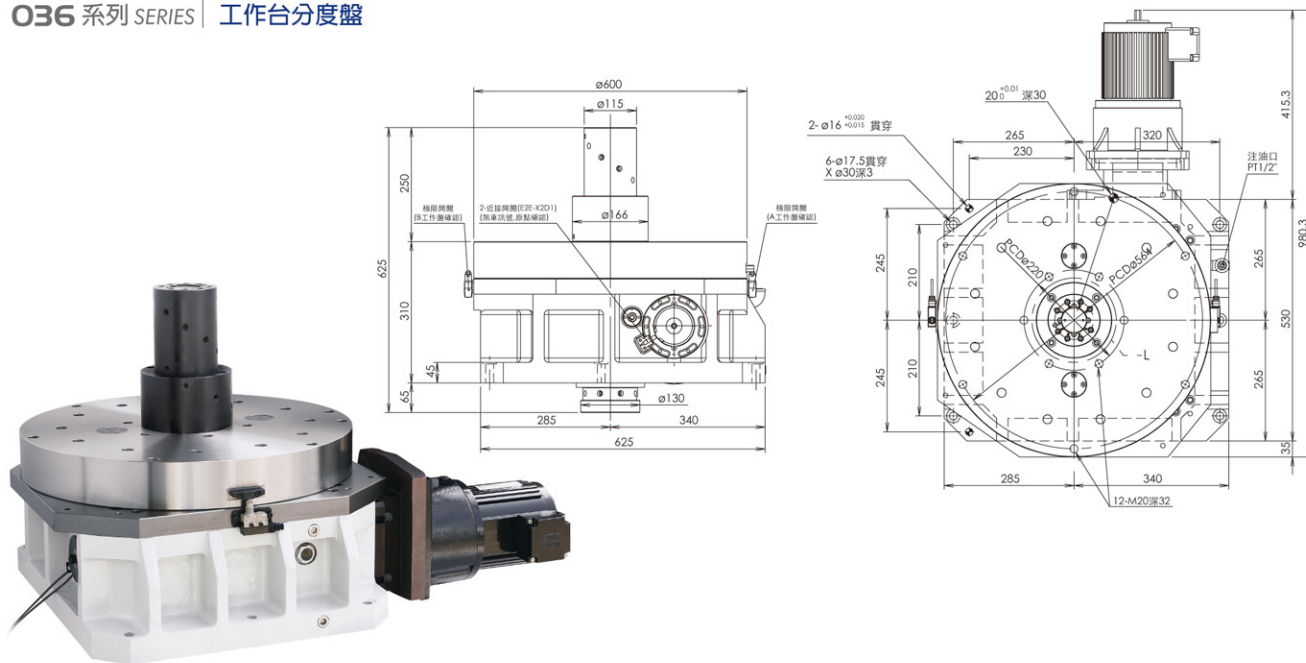


分割數 INDEX NUMBER	運動曲線 MOTION CURVE
3分割 3 index	MS曲線 Modified trapezoid motion curve



## APC Automatic Pallet Changer

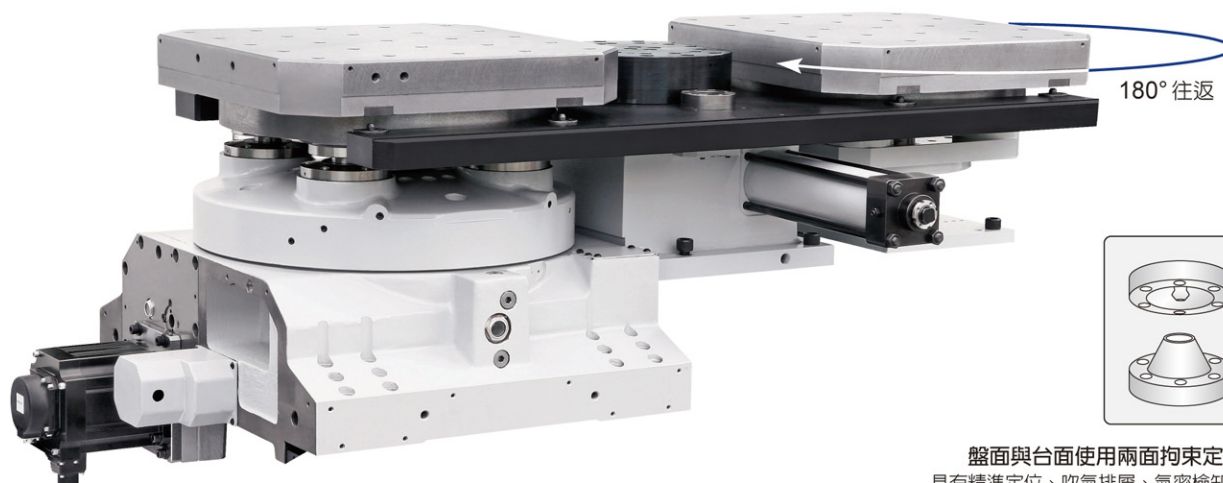
036 系列 SERIES 工作台分度盤



分割數 DIVISION NUMBER	離合器型式 CLUTCH TYPE	扭力 TORQUE	精度 ACCURACY	容許負載 ALLOWABLE LOAD	交換時間 CHANGE TIME	馬達功率/減速比 MOTOR POWER / REDUCTION RATIO	潤滑油 LUBRICATING OIL	中心油壓分油裝置 THE CENTER HYDRAULIC OIL DEVICE
2 (180°)	3片式	容許定格扭力 30.4 kg-m (/50rpm) 鎖緊扭力 7000 kgf	割出精度 5" 重複精度 1"	F 7000 kgf FxL 2300 kg-m FxH 560 kg-m 容許最大壓力 30 MPa	負載/單邊(時間) 200kg 3.8秒 300kg 4.3秒 400kg 5.2秒	750 W/1:120	潤滑油 ISO VG100-150 潤滑油量 10公升 總質量 500	PT1/4" 8 x 8

## APC Automatic Pallet Changer

035 系列 SERIES 臥式托盤式交換台/雙工作台分度盤



盤面與台面使用兩面拘束定位錐  
具有精準定位、吹氣排屑、氣密檢知功能

工作台尺寸 PALL DIMENSION	工作台數 NUMBER OF PALLETS	積載荷重/單工作台 MAX. LOAD OF EACH PALLLET	交換時間 CHANGE TIME	上昇/下降行程 CHANGE STATION LIFT UP STROKE	上昇/下降驅動源 CHANGE STATION LIFT UP DRIVE	旋回驅動源 CHANGE STATION ROTARY DRIVE	段取ST位置訂位 SETUP STATION LOCATE
500 x 500mm	2	600kg (Total 600x2=1200kg)	8 sec	60 mm	Hydraulic Cylinder (6MPa 19L/min)	Hydraulic Cylinder (6MPa 15L/min)	Air Cylinder (0.4MPa)

*High Rigidity • High Speed • Durability*



歐權科技股份有限公司  
Auto Cam Technology Co., Ltd.  
台中市西屯區工業四十二路17號  
No.17, Rd. 42, Taichung Industrial  
Park, Taichung city, Taiwan, R.O.C.

TEL: 886-4-23551301  
FAX: 886-4-23550811  
www.autocam.com.tw  
E-mail:  
sales@autocam.com.tw  
overseas@autocam.com.tw

