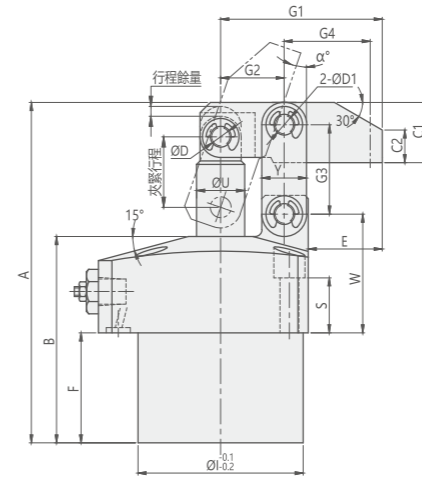
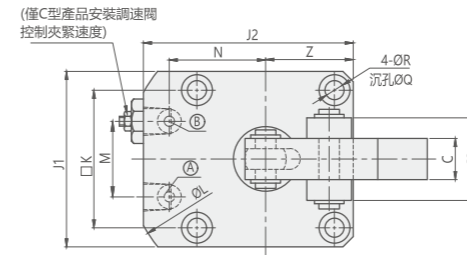


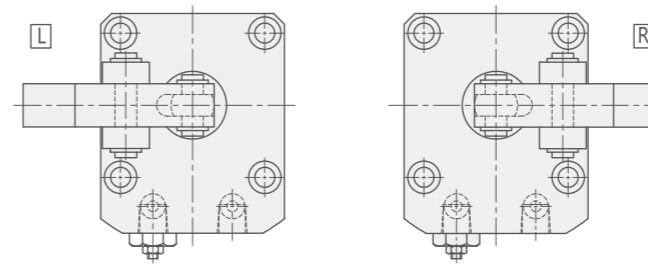
CLKA

高動力&紮實型槓桿式油壓缸

CLKA HYDRAULIC LEVERAGE CLAMP



壓臂安裝方向 Lever Direction



Ⓐ 夾持油孔 Clamping port
Ⓑ 放鬆油孔 Unclamping port

MODEL ITEM	CLKA -036	CLKA -040	CLKA -048	CLKA -055	CLKA -065	CLKA -075	CLKA -090	CLKA -105
A	78.5	87.5	99	110.5	127.5	151	180	209
J2	49	54	61	69	81	94.5	109.5	127
J1	40	45	51	60	70	85	100	120
I	36	40	48	55	65	75	90	105
B	48	54	60	65	73.5	84	101	115
F	23	29	32	37	43.5	47	61	65
C	10	12	12	16	19	22	25	32
Z	20	22.5	25.5	30	35	42.5	50	60
K	31.4	34	40	47	55	63	75	88
L	66	72	81	88	106	116	136	152
C1	12.5	14	16	20	25	32	38	45
C2	6	8	8	12	17	24	30	37
N	23.5	26	30	33.5	39.5	45	52.5	60
M	16	18	22	24	30	32	37	45
Q	7.5	9	9	11	11	14	17.5	20
R	4.5	5.5	5.5	6.8	6.8	9	11	14
S	15.5	15	16	13.5	16	17.5	17	23
W	30	30.5	34.5	35.5	39	48	52.5	64
G3	20	22	26	30	35.5	43.5	52.5	64
Y	11	13	13	16	19	25	28	32
C3	19	21	24	28	37	40	49	64
G2	14.5	16	18.5	21	24.5	30	36	44
D	5	6	6	6	8	10	12	15
D1	5	6	6	8	10	12	15	18
G1	37	40	47	55	61.5	72.5	82.5	100
α	19.6	20.2	18.9	19.3	20	21.4	22.4	23.1
E	17	17.5	21.5	25	26.5	30	32.5	40
G4	19	20.5	23.5	29	32	37.5	41.5	51
ΦU	Φ10	Φ12	Φ14	Φ16	Φ20	Φ22	Φ28	Φ35
配管式油口 PORT WITH LINE TYPE	2-PT1/8	2-PT1/8	2-PT1/8	2-PT1/8	2-PT1/4	2-PT1/4	2-PT3/8	2-PT3/8
油孔O型圈 (C/G型) O-RING HOLE (C/G TYPE)	P5	P5	P5	P5	P7	P7	P7	P7

產品特性

此系列產品配件採用優化設計,與傳統產品比較夾緊能力提高了。產品支撐點部位與缸體採用一體化結構,使體積更加紮實,提高了產品強度。產品採用了專用防塵設計,提高了防塵和密封性,實現了高密封性。產品法蘭下部採用縮小設計,適合夾具要求的緊湊化和輕量化。

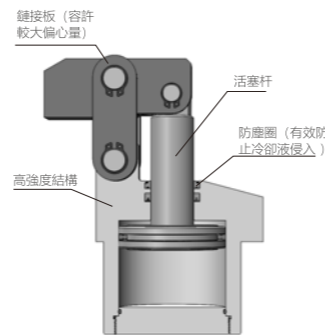
最大操作壓力: 70 kgf/cm²
最小操作壓力: 10 kgf/cm²

FEATURES

Product with optimal design,so the clamping capacity is better than others clamps.Product with the integrated structure on support site and cylinder body,so made product will be more impact,and strength will be improved.Product with special dust proof design,to make sure a high sealing performance.Product with lower flange design,more suitable for compact and light fixture.

Max. operating pressure: 70 kgf/cm²
Min. operating pressure:10 kgf/cm²

剖面圖 Sectional view



注意事項

夾緊及放鬆作動速度需適當放緩。
可接受訂製, 歡迎與本公司洽詢。

NOTE

The acting speed of clamping-unclamping should be slowed down.
Orders with customized request are available, welcome to contact us.

訂購標示法 ORDERING INDICATION

示例: CLKA - 036CML

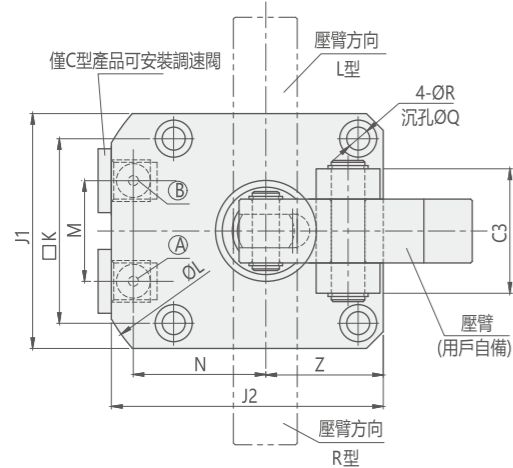
CLKA	系列 Series	CLKA
036	主體尺寸 Body size	036: ΦI=36 040: ΦI=40 048: ΦI=48 055: ΦI=55 065: ΦI=65 075: ΦI=75 090: ΦI=90 105: ΦI=105
C	油口型式 Port type	空白: 配管式 G: 油路板式 C: 油路板式附調速 Blank: Line type G: Manifold type C: Manifold with flow type
M	檢測方式 Lever direction	無符號: 無 (標準) D: 探頭用雙桿型 M: 適用於空氣傳感版式連接型 N: 適用於空氣感測器配管型 No sign: No (standard) D: Double end rod option for probe M: Suitable for air sensor type connection N: Suitable for air sensor piping type
L	壓臂安裝方向 Lever direction	空白: 標準 L: 左 R: 右 Blank: Standard L: Left R: Right

規格參數表 SPECIFICATION

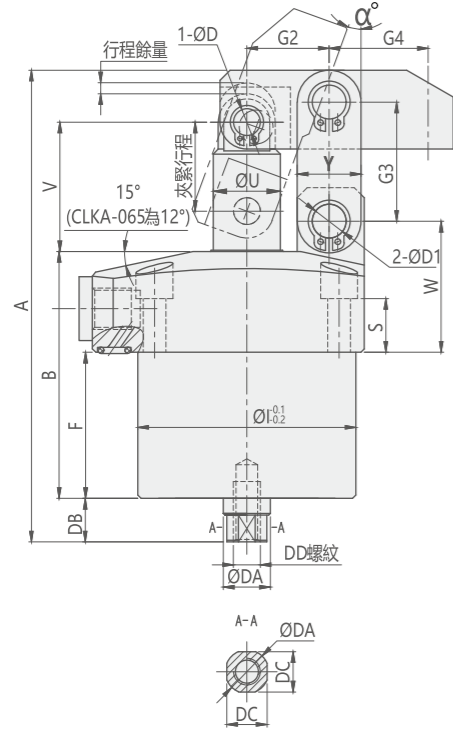
型號	理論夾持力 (70 kgf/cm ²)	夾緊行程	總行程	推出容積	拉入容積	推出受壓面積	拉入受壓面積	使用溫度範圍	使用流體
MODEL	CLAMPING FORCE AT 70 kgf/cm ² (kgf)	CLAMPING STROKE (mm)	TOTAL STROKE(mm)	CYLINDER CAPACITY CLAMP(cm ³)	CYLINDER CAPACITY UNCLAMP(cm ³)	EFF.PISTON AREA CLAMP(cm ²)	EFF.PISTON AREA UNCLAMP(cm ²)	RANGE OF TEMPERATURE(°C)	USABLE FLUID
CLKA-036	203	16	18.5	7.03	5.57	3.80	3.01	-10~+70°C	相當於ISO黏度等級的ISO-VG-32一般液壓油 General Hydraulic Oil Equivalent to ISO-VG-32
CLKA-040	268	17.5	20.5	10.07	7.75	4.91	3.78	-10~+70°C	
CLKA-048	443	20.5	23.5	18.89	15.28	8.04	6.5	-10~+70°C	
CLKA-055	636	23	26	32.66	27.43	12.56	10.55	-10~+70°C	
CLKA-065	1052	26.5	29.5	57.91	48.65	19.63	16.49	-10~+70°C	
CLKA-075	1745	32	35	109.06	95.76	31.16	27.36	-10~+70°C	
CLKA-090	2093	38	41	141.37	132.55	34.48	32.33	-10~+70°C	
CLKA-105	3034	46	49	246.18	199.04	50.24	40.62	-10~+70°C	

Unit:mm

註：本圖為CLKA-GD型夾持狀態



- Ⓐ 夾持油孔 Clamping port
- Ⓑ 放鬆油孔 Unclamping port



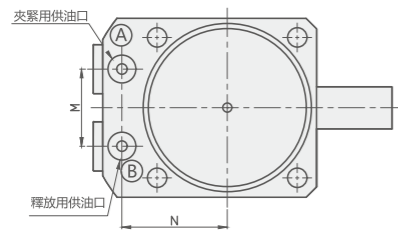
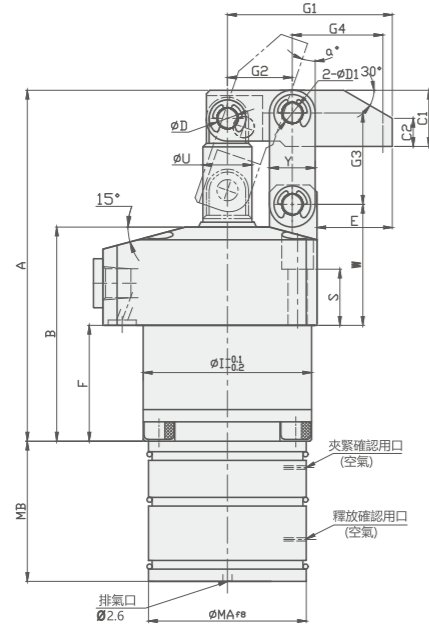
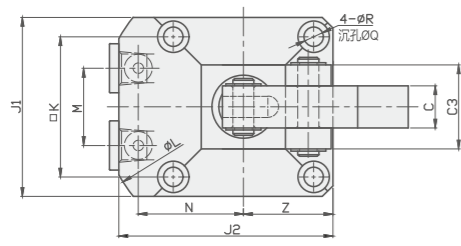
MODEL ITEM	CLKA-036D	CLKA-040D	CLKA-048D	CLKA-055D	CLKA-065D	CLKA-075D	CLKA-090D	CLKA-105D
A	89	100.5	112	123.5	140.5	164	193	222
J2	49	54	61	69	81	94.5	109.5	127
J1	40	45	51	60	70	85	100	120
I	36	40	48	55	65	75	90	105
B	48	54	60	65	73.5	84	101	115
F	23	29	32	37	43.5	47	61	65
Z	20	22.5	25.5	30	35	42.5	50	60
K	31.4	34	40	47	55	63	75	88
L	66	72	81	88	106	116	136	152
G4	19	20.5	23.5	29	32	37.5	41.5	51
α	19.6	20.2	18.9	19.3	20	21.4	22.4	23.1
N	23.5	26	30	33.5	39.5	45	52.5	60
M	16	18	22	24	30	32	37	45
Q	7.5	9	9	11	11	14	17.5	20
R	4.5	5.5	5.5	6.8	6.8	9	11	14
S	15.5	15	16	13.5	16	17.5	17	23
W	30	30.5	34.5	35.5	39	48	52.5	64
G3	20	22	26	30	35.5	43.5	52.5	64
Y	11	13	13	16	19	25	28	32
C3	19	21	24	28	37	40	49	64
G2	14.5	16	18.5	21	24.5	30	36	44
D	5	6	6	6	8	10	12	15
D1	5	6	6	8	10	12	15	18
ΦDA	8	12	14	14	14	18	18	18
DB	10.5	13	13	13	13	13	13	13
DC	6	10	12	12	12	16	16	16
DD名稱x深度(Nominal x Depth)	M4×10	M6×15	M8×18	M8×18	M8×18	M10×21	M10×21	M10×21
ΦU	Φ10	Φ12	Φ14	Φ16	Φ20	Φ22	Φ28	Φ35
配管式油口 PORT WITH LINE TYPE	2-PT1/8	2-PT1/8	2-PT1/8	2-PT1/8	2-PT1/4	2-PT1/4	2-PT3/8	2-PT3/8
油孔O型圈 (C/G型) O-RING HOLE (C/G TYPE)	P5	P5	P5	P5	P7	P7	P7	P7

規格參數表 SPECIFICATION

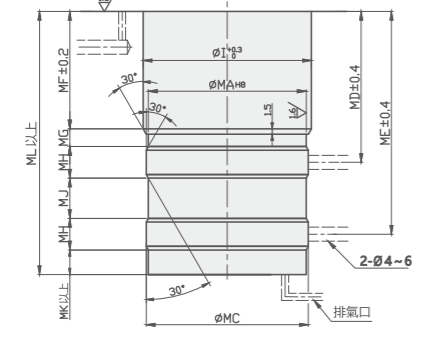
型號	理論夾持力 (70 kgf/cm ²)	夾緊行程	總行程	推出容積	拉入容積	推出受壓面積	拉入受壓面積	使用溫度範圍	使用液體
MODEL	CLAMPING FORCE AT 70 kgf/cm ² (kgf)	CLAMPING STROKE (mm)	TOTAL STROKE (mm)	CYLINDER CAPACITY CLAMP (cm ³)	CYLINDER CAPACITY UNCLAMP (cm ³)	EFF.PISTON AREA CLAMP (cm ²)	EFF.PISTON AREA UNCLAMP (cm ²)	RANGE OF TEMPERATURE (°C)	USABLE FLUID
CLKA-036D	214	16	18.5	7.4	6.9	4.02	3.55	-10~+70°C	相當於ISO黏度等級的ISO-VG-32一般液壓油 General Hydraulic Oil Equivalent to ISO-VG-32
CLKA-040D	228	17.5	20.5	8.6	8.6	4.18	4.18	-10~+70°C	
CLKA-048D	304	20.5	23.5	13.0	13	5.53	5.53	-10~+70°C	
CLKA-055D	409	23	26	21.0	19.8	8.08	7.61	-10~+70°C	
CLKA-065D	771	26.5	29.5	42.4	37.7	14.4	12.8	-10~+70°C	
CLKA-075D	1187	32	35	74.2	69.8	21.2	19.94	-10~+70°C	
CLKA-090D	2052	38	41	138.5	123.7	33.8	30.2	-10~+70°C	
CLKA-105D	2880	46	49	233.8	197.8	47.7	40.35	-10~+70°C	



注：本圖以CLKA-GM型夾持狀態



注：安裝部分加工尺寸

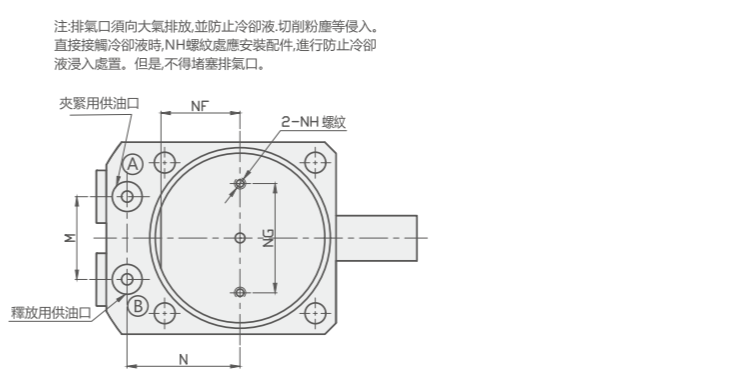
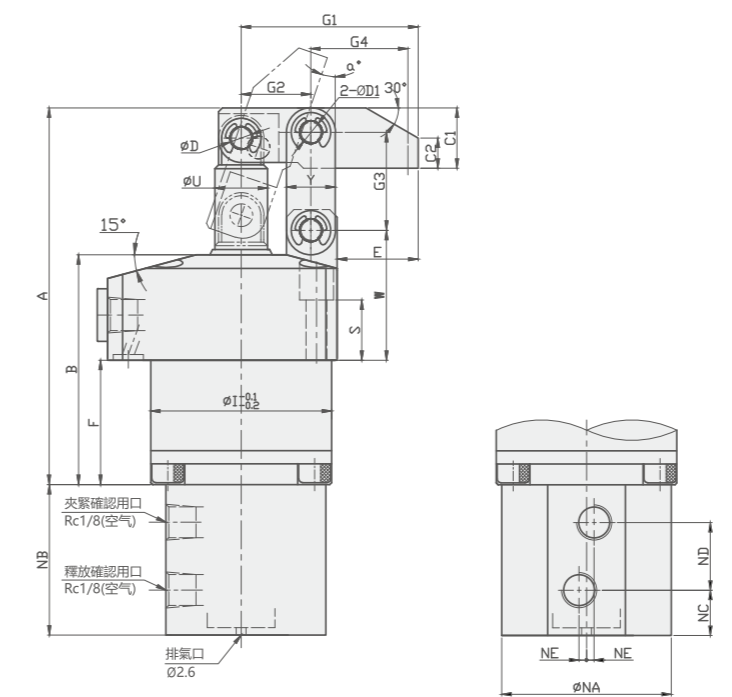
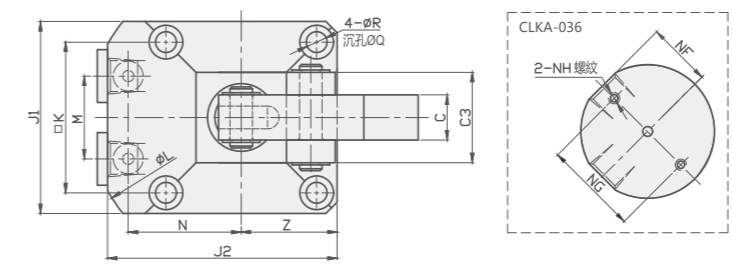


- Ⓐ 夾持油孔 Clamping port
- Ⓑ 放鬆油孔 Unclamping port

Unit:mm

MODEL ITEM	CLKA-036M	CLKA-040M	CLKA-048M	CLKA-055M	CLKA-065M	CLKA-075M	CLKA-090M	CLKA-105M
A	78.5	88.5	100	114	134.5	153	186	223
J2	49	54	61	69	81	94.5	109.5	127
J1	40	45	51	60	70	85	100	120
I	36	40	48	55	65	75	90	105
B	48	55	61	68.5	80.5	88	107	129
F	23	30	33	40.5	50.5	49	67	79
C	10	12	12	16	19	22	25	32
Z	20	22.5	25.5	30	35	42.5	50	60
K	31.4	34	40	47	55	63	75	88
L	66	72	81	88	106	116	136	152
C1	12.5	14	16	20	25	32	38	45
C2	6	8	8	12	17	24	30	37
N	23.5	26	30	33.5	39.5	45	52.5	60
M	16	18	22	24	30	32	37	45
Q	7.5	9	9	11	11	14	17.5	20
R	4.5	5.5	5.5	6.8	6.8	9	11	14
S	15.5	15	16	13.5	16	17.5	17	23
W	30	30.5	34.5	35.5	39	48	52.5	64
G3	20	22	26	30	35.5	43.5	52.5	64
Y	11	13	13	16	19	25	28	32
C3	19	21	24	28	37	40	49	64
G2	14.5	16	18.5	21	24.5	30	36	44
D	5	6	6	6	8	10	12	15
D1	5	6	6	8	10	12	15	18
G1	37	40	47	55	61.5	72.5	82.5	100
α	19.6	20.2	18.9	19.3	20	21.4	22.4	23.1
E	17	17.5	21.5	25	26.5	30	32.5	40
G4	19	20.5	23.5	29	32	37.5	41.5	51
ΦU	Φ10	Φ12	Φ14	Φ16	Φ20	Φ22	Φ28	Φ35
配置式油口 PORT WITH LINE TYPE	2-PT1/8	2-PT1/8	2-PT1/8	2-PT1/8	2-PT1/4	2-PT1/4	2-PT3/8	2-PT3/8
油孔O型圈 (C/G型) O-RING HOLE	P5	P5	P5	P5	P7	P7	P7	P7
MAf8	34.5 ^{-0.03} _{-0.06}	38 ^{-0.03} _{-0.06}	45 ^{-0.03} _{-0.06}	45 ^{-0.03} _{-0.06}	45 ^{-0.03} _{-0.06}	53 ^{-0.03} _{-0.07}	53 ^{-0.03} _{-0.07}	53 ^{-0.03} _{-0.07}
MAH8	34.5 ^{+0.04} ₀	38 ^{+0.04} ₀	45 ^{+0.04} ₀	45 ^{+0.04} ₀	45 ^{+0.04} ₀	53 ^{+0.04} ₀	53 ^{+0.04} ₀	53 ^{+0.04} ₀
MB	31	36	40	40	40	59.5	59.5	59.5
MC	35.7	39.2	46.2	46.2	46.2	54.2	54.2	54.2
MD	32.5	40	43	50.5	60.5	61	79	91
ME	45.5	56.5	63.5	71	81	93.5	111.5	123.5
MF	23.5	30.5	33.5	41	51	49.5	67.5	79.5
MG	4.5	5	5	5	5	5.5	5.5	5.5
MH	9	9	9	9	9	12	12	12
MJ	4	7.5	11.5	11.5	11.5	20.5	20.5	20.5
MK	6	7	7	7	7	11	11	11
ML	56	68	75	82.5	92.5	110.5	128.5	140.5

注：本圖以CLKA-GN型夾持狀態

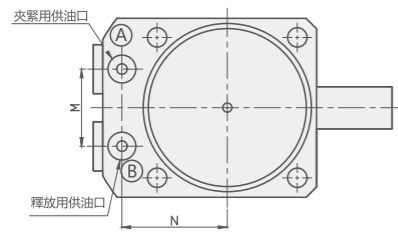
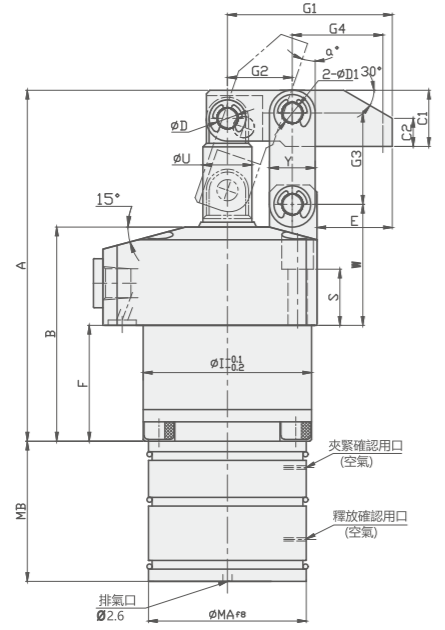
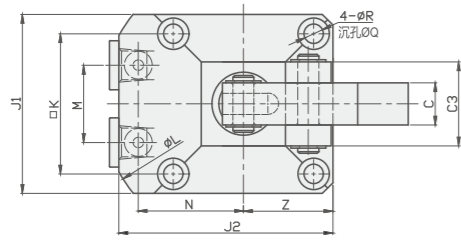


- Ⓐ 夾持油孔 Clamping port
- Ⓑ 放鬆油孔 Unclamping port

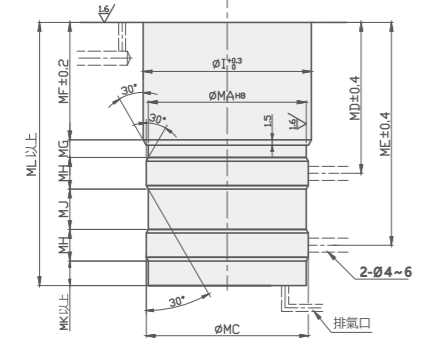
Unit:mm

MODEL ITEM	CLKA-036N	CLKA-040N	CLKA-048N	CLKA-055N	CLKA-065N	CLKA-075N	CLKA-090N	CLKA-105N
A	78.5	88.5	100	114	134.5	153	186	223
J2	49	54	61	69	81	94.5	109.5	127
J1	40	45	51	60	70	85	100	120
I	36	40	48	55	65	75	90	105
B	48	55	61	68.5	80.5	86	107	129
F	23	30	33	40.5	45	49	67	79
C	10	12	12	16	19	22	25	32
Z	20	22.5	25.5	30	35	42.5	50	60
K	31.4	34	40	47	55	63	75	88
L	66	72	81	88	106	116	136	152
C1	12.5	14	16	20	25	32	38	45
C2	6	8	8	12	17	24	30	37
N	23.5	26	30	33.5	39.5	45	52.5	60
M	16	18	22	24	30	32	37	45
Q	7.5	9	9	11	11	14	17.5	20
R	4.5	5.5	5.5	6.8	6.8	9	11	14
S	15.5	15	16	13.5	16	17.5	17	23
W	30	30.5	34.5	35.5	39	48	52.5	64
G3	20	22	26	30	35.5	43.5	52.5	64
Y	11	13	13	16	19	25	28	32
C3	19	21	24	28	37	40	49	64
G2	14.5	16	18.5	21	24.5	30	36	44
D	5	6	6	6	8	10	12	15
D1	5	6	6	8	10	12	15	18
G1	37	40	47	55	61.5	72.5	82.5	100
α	19.6	20.2	18.9	19.3	20	21.4	22.4	23.1
E	17	17.5	21.5	25	26.5	30	32.5	40
G4	19	20.5	23.5	29	32	37.5	41.5	51
ΦU	Φ10	Φ12	Φ14	Φ16	Φ20	Φ22	Φ28	Φ35
配置式油口 PORT WITH LINE TYPE	2-PT1/8	2-PT1/8	2-PT1/8	2-PT1/8	2-PT1/4	2-PT1/4	2-PT3/8	2-PT3/8
油孔O型圈 (C/G型) O-RING HOLE (C/G TYPE)	P5	P5	P5	P5	P7	P7	P7	P7
ΦNA	35.5	39.5	45	45	45	53	53	53
NB	31	36	40	40	40	59.5	59.5	59.5
NC	9	8.5	12	12	12	20	20	20
ND	12.5	17.5	18	18	18	29.5	29.5	29.5
NE	-	1	2	2	2	3	3	3
NF	17	18.5	20	20	20	24	24	24
NG	25	29	29	29	29	38	38	38
NH(公稱×深度) (Nominal ×Depth)	M3×0.5×6	M3×0.5×6	M3×0.5×6	M3×0.5×6	M3×0.5×6	M4×0.7×7	M4×0.7×7	M4×0.7×7

注：本圖以CLKA-GM型夾持狀態



注：安裝部分加工尺寸

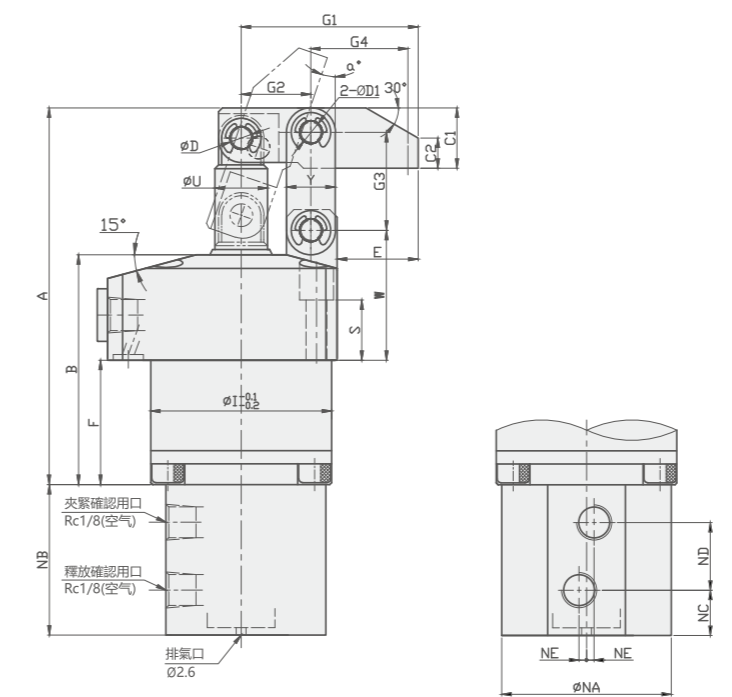
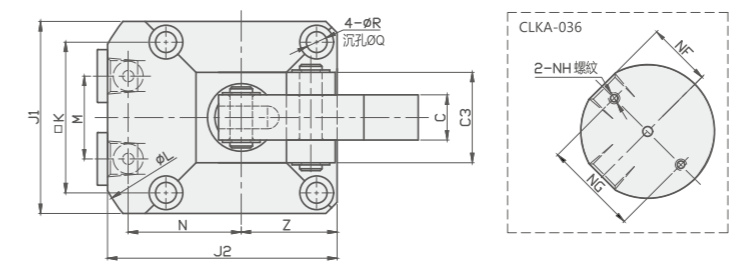


- Ⓐ 夾持油孔 Clamping port
- Ⓑ 放鬆油孔 Unclamping port

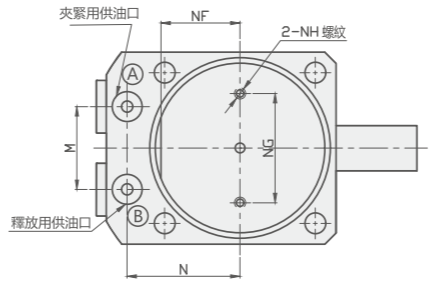
Unit:mm

MODEL ITEM	CLKA-036M	CLKA-040M	CLKA-048M	CLKA-055M	CLKA-065M	CLKA-075M	CLKA-090M	CLKA-105M
A	78.5	88.5	100	114	134.5	153	186	223
J2	49	54	61	69	81	94.5	109.5	127
J1	40	45	51	60	70	85	100	120
I	36	40	48	55	65	75	90	105
B	48	55	61	68.5	80.5	88	107	129
F	23	30	33	40.5	50.5	49	67	79
C	10	12	12	16	19	22	25	32
Z	20	22.5	25.5	30	35	42.5	50	60
K	31.4	34	40	47	55	63	75	88
L	66	72	81	88	106	116	136	152
C1	12.5	14	16	20	25	32	38	45
C2	6	8	8	12	17	24	30	37
N	23.5	26	30	33.5	39.5	45	52.5	60
M	16	18	22	24	30	32	37	45
Q	7.5	9	9	11	11	14	17.5	20
R	4.5	5.5	5.5	6.8	6.8	9	11	14
S	15.5	15	16	13.5	16	17.5	17	23
W	30	30.5	34.5	35.5	39	48	52.5	64
G3	20	22	26	30	35.5	43.5	52.5	64
Y	11	13	13	16	19	25	28	32
C3	19	21	24	28	37	40	49	64
G2	14.5	16	18.5	21	24.5	30	36	44
D	5	6	6	6	8	10	12	15
D1	5	6	6	8	10	12	15	18
G1	37	40	47	55	61.5	72.5	82.5	100
α	19.6	20.2	18.9	19.3	20	21.4	22.4	23.1
E	17	17.5	21.5	25	26.5	30	32.5	40
G4	19	20.5	23.5	29	32	37.5	41.5	51
ΦU	Φ10	Φ12	Φ14	Φ16	Φ20	Φ22	Φ28	Φ35
配置式油口 PORT WITH LINE TYPE	2-PT1/8	2-PT1/8	2-PT1/8	2-PT1/8	2-PT1/4	2-PT1/4	2-PT3/8	2-PT3/8
油孔O型圈 (C/G型) O-RING HOLE	P5	P5	P5	P5	P7	P7	P7	P7
MAf8	34.5 ^{-0.03} _{-0.06}	38 ^{-0.03} _{-0.06}	45 ^{-0.03} _{-0.06}	45 ^{-0.03} _{-0.06}	45 ^{-0.03} _{-0.06}	53 ^{-0.03} _{-0.07}	53 ^{-0.03} _{-0.07}	53 ^{-0.03} _{-0.07}
MAH8	34.5 ^{+0.04} ₀	38 ^{+0.04} ₀	45 ^{+0.04} ₀	45 ^{+0.04} ₀	45 ^{+0.04} ₀	53 ^{+0.04} ₀	53 ^{+0.04} ₀	53 ^{+0.04} ₀
MB	31	36	40	40	40	59.5	59.5	59.5
MC	35.7	39.2	46.2	46.2	46.2	54.2	54.2	54.2
MD	32.5	40	43	50.5	60.5	61	79	91
ME	45.5	56.5	63.5	71	81	93.5	111.5	123.5
MF	23.5	30.5	33.5	41	51	49.5	67.5	79.5
MG	4.5	5	5	5	5	5.5	5.5	5.5
MH	9	9	9	9	9	12	12	12
MJ	4	7.5	11.5	11.5	11.5	20.5	20.5	20.5
MK	6	7	7	7	7	11	11	11
ML	56	68	75	82.5	92.5	110.5	128.5	140.5

注：本圖以CLKA-GN型夾持狀態



注：排氣口須向大氣排放，並防止冷卻液、切削粉塵等侵入。直接接觸冷卻液時，NH螺紋處應安裝配件，進行防止冷卻液浸入處置，但是不得堵塞排氣口。



- Ⓐ 夾持油孔 Clamping port
- Ⓑ 放鬆油孔 Unclamping port

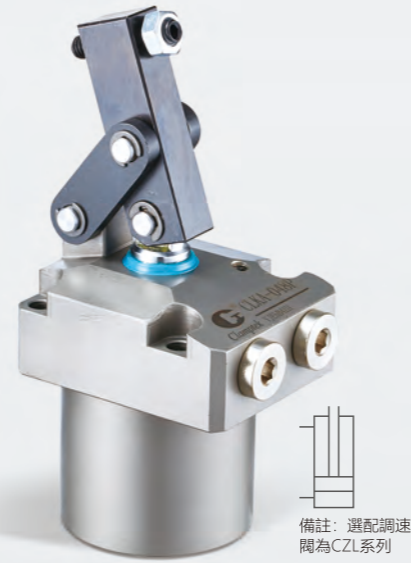
Unit:mm

MODEL ITEM	CLKA-036N	CLKA-040N	CLKA-048N	CLKA-055N	CLKA-065N	CLKA-075N	CLKA-090N	CLKA-105N
A	78.5	88.5	100	114	134.5	153	186	223
J2	49	54	61	69	81	94.5	109.5	127
J1	40	45	51	60	70	85	100	120
I	36	40	48	55	65	75	90	105
B	48	55	61	68.5	80.5	86	107	129
F	23	30	33	40.5	45	49	67	79
C	10	12	12	16	19	22	25	32
Z	20	22.5	25.5	30	35	42.5	50	60
K	31.4	34	40	47	55	63	75	88
L	66	72	81	88	106	116	136	152
C1	12.5	14	16	20	25	32	38	45
C2	6	8	8	12	17	24	30	37
N	23.5	26	30	33.5	39.5	45	52.5	60
M	16	18	22	24	30	32	37	45
Q	7.5	9	9	11	11	14	17.5	20
R	4.5	5.5	5.5	6.8	6.8	9	11	14
S	15.5	15	16	13.5	16	17.5	17	23
W	30	30.5	34.5	35.5	39	48	52.5	64
G3	20	22	26	30	35.5	43.5	52.5	64
Y	11	13	13	16	19	25	28	32
C3	19	21	24	28	37	40	49	64
G2	14.5	16	18.5	21	24.5	30	36	44
D	5	6	6	6	8	10	12	15
D1	5	6	6	8	10	12	15	18
G1	37	40	47	55	61.5	72.5	82.5	100
α	19.6	20.2	18.9	19.3	20	21.4	22.4	23.1
E	17	17.5	21.5	25	26.5	30	32.5	40
G4	19	20.5	23.5	29	32	37.5	41.5	51
ΦU	Φ10	Φ12	Φ14	Φ16	Φ20	Φ22	Φ28	Φ35
配置式油口 PORT WITH LINE TYPE	2-PT1/8	2-PT1/8	2-PT1/8	2-PT1/8	2-PT1/4	2-PT1/4	2-PT3/8	2-PT3/8
油孔O型圈 (C/G型) O-RING HOLE (C/G TYPE)	P5	P5	P5	P5	P7	P7	P7	P7
ΦNA	35.5	39.5	45	45	45	53	53	53
NB	31	36	40	40	40	59.5	59.5	59.5
NC	9	8.5	12	12	12	20	20	20
ND	12.5	17.5	18	18	18	29.5	29.5	29.5
NE	-	1	2	2	2	3	3	3
NF	17	18.5	20	20	20	24	24	24
NG	25	29	29	29	29	38	38	38
NH(公稱×深度) (Nominal ×Depth)	M3×0.5×6	M3×0.5×6	M3×0.5×6	M3×0.5×6	M3×0.5×6	M4×0.7×7	M4×0.7×7	M4×0.7×7

CLKA-P

高動力&紮實型油壓缸

CLKA-P HYDRAULIC LEVERAGE CLAMP



備註：選配調速閥為CZL系列

產品特性

此系列產品配件採用優化設計,與傳統產品比較夾緊能力提高了。產品支撐點部位與缸體採用一體化結構,使體積更加紮實,提高了產品強度。產品採用了專用防塵設計,提高了防塵和密封性,實現了高密封性。產品法蘭下部採用縮小設計,適合夾具要求的緊湊化和輕量化。

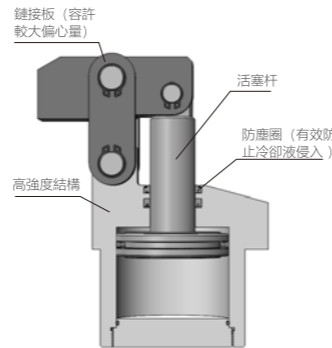
最大操作壓力: 70 kgf/cm²
 最小操作壓力: 10 kgf/cm²

FEATURES

Product with optimal design,so the clamping capacity is better than others clamps.Product with the integrated structure on support site and cylinder body,so made product will be more impact,and strength will be improved.Product with special dust proof design,to make sure a high sealing performance.Product with lower flange design,more suitable for compact and light fixture.

Max. operating pressure: 70 kgf/cm²
 Min. operating pressure:10 kgf/cm²

剖面圖 Sectional view



注意事項

夾緊及放鬆作動速度需適當放緩。
 可接受訂製，歡迎與本公司洽詢。

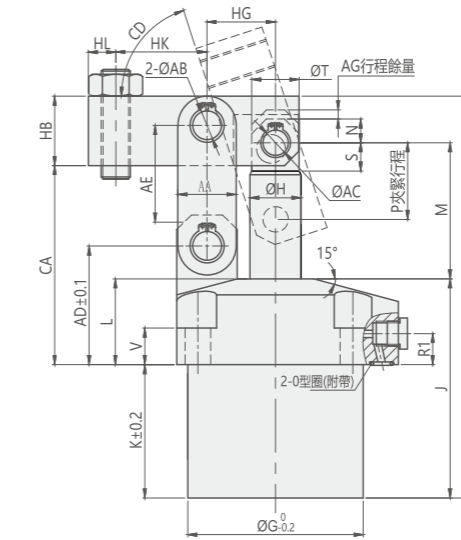
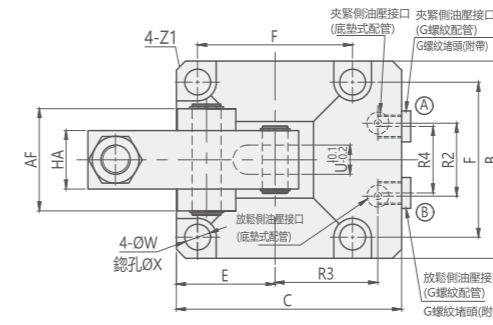
NOTE

The acting speed of clamping-unclamping should be slowed down.
 Orders with customized request are available, welcome to contact us.

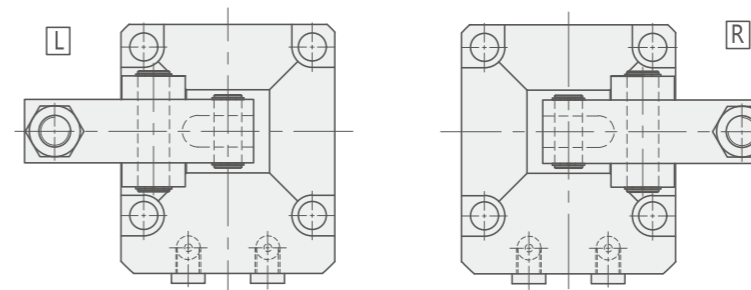
訂購標示法 ORDERING INDICATION

示例: CLKA - 040PL

CLKA-P	系列 Series	CLKA-P	
040	040/048/055/065/075/105		
L	壓臂安裝方向 Lever direction	空白: 標準 R: 右 L: 左	Blank: Standard R:Right L:Left



壓臂安裝方向 Lever Direction



Ⓐ 夾持油孔 Clamping port
 Ⓑ 放鬆油孔 Unclamping port

Unit:mm

MODEL ITEM	CLKA -040P	CLKA -048P	CLKA -055P	CLKA -065P	CLKA -075P	CLKA -105P
A	97	108	119.5	140	166	199
B	45	50	57	70	86	108
C	55	60	66	82	96	120
E	22.5	25	28.5	35	43	54
F	35	40	46	56	68	88
G	39	47	53	63	78	100
H	12	14	14	16	22.4	28
J	60	66	71	83	95	112
K	33.5	39.5	42.5	47	55	65
L	26.5	26.5	28.5	36	40	47
M	28.5	32	34.5	40	49	61.5
N	5	6	6	8	11	13
P	17.5	20.5	23	26.5	33	42
Q	2	2	2	2	2.5	2.5
R1	12.5	12.5	12.5	14	14	21
R2	22	24	28	36	45	50
R3	25	28	30.5	36	42	57
R4	20	22	26	30	38	50
S	6.5	7	7	9	10.8	14.5
T	10	12	12	14	20	26
U	6	6	8	10	11	16
V	18	17	17	20	20	20
W	5.5	5.5	6.8	9	11	14
X	10	10	12	15	18.5	20
Y	G/1/8	G1/8	G1/8	G1/4	G1/4	G3/8
Z1	C1.5	C2.5	C2.5	C3	C3.5	C5.5
O型圈O-Ring	P7	P7	P7	P8	P8	P10
AA	11	13	15	19	25	32
AB	6 ^{+0.012} ₀	6 ^{+0.012} ₀	8 ^{+0.015} ₀	10 ^{+0.015} ₀	14 ^{+0.018} ₀	16 ^{+0.018} ₀
AC	6 ^{+0.012} ₀	6 ^{+0.012} ₀	6 ^{+0.012} ₀	8 ^{+0.015} ₀	12 ^{+0.018} ₀	14 ^{+0.018} ₀
AD	34	36	39	48	54.5	65
AE	24	26	30	35.5	44	53
AF	21	21	28	37	46	56
AG	3	3	3	3	3	3
BC	4	4	4	6	6	8
CA	49.5	52.5	57	68	80	96
CB	48	59.6	67.3	78.7	98.2	133.5
CC	80.2	92.5	101.3	120.4	144.7	189.2
CD	約69°	約71°	約70°	約70°	約69°	約72°
HA	12	12	16	19	22	32
HB	14	16	20	25	31	38
HG	16.5	18.5	21	24.5	30.5	37.5
HK	20	23.5	29	32	39	50
HL	6	6	8	10	11	15

規格參數表 SPECIFICATION

型號	理論夾持力 (70 kgf/cm ²)	夾緊行程	總行程	推出容積	拉入容積	推出受壓面積	拉入受壓面積	使用溫度範圍	使用液體
MODEL	CLAMPING FORCE AT 70 kgf/cm ² (kgf)	CLAMPING STROKE (mm)	TOTAL STROKE(mm)	CYLINDER CAPACITY CLAMP(cm ³)	CYLINDER CAPACITY UNCLAMP(cm ³)	EFF.PISTON AREA CLAMP(cm ²)	EFF.PISTON AREA UNCLAMP(cm ²)	RANGE OF TEMPERATURE(°C)	USABLE FLUID
CLKA-040P	283	17.5	20.5	10	7.7	4.9	3.77	0~+70°C	相當於ISO黏度等級的ISO-VG-32一般液壓油 General Hydraulic Oil Equivalent to ISO-VG-32
CLKA-048P	391	20.5	23.5	16.7	13	7.1	5.56	0~+70°C	
CLKA-055P	486	23	26	25	21	9.6	8.06	0~+70°C	
CLKA-065P	814	26.5	29.5	44.8	38.9	15.2	13.2	0~+70°C	
CLKA-075P	1346	33	36	88.6	74.5	24.6	20.66	0~+70°C	
CLKA-105P	2020	42	45	173.3	145.5	38.5	32.35	0~+70°C	