



www.sesamemotor.com



Made in Taiwan

伺服專用減速機

小型感應馬達

齒輪馬達

世協電機品牌故事

世協電機發展沿革-- 從技術突破到國際品牌的堅持之路

1990年，台灣正值機械製造業蓬勃發展的時代，各類設備與零組件需求日益攀升，小型交流馬達作為關鍵驅動元件之一，市場潛力明顯可見。我們看見了突破的機會，也發現了這個產業的瓶頸，於是選擇走上一條不同的路——以技術創新與品質堅持，打造屬於台灣的專業小型交流馬達品牌——「世協電機」。

與其說世協電機的誕生是一家新創企業的起點，不如說它是一場對市場現況的挑戰與革新。當時市場上，輸出6W至90W的各家品牌小型交流馬達產品在品質上參差不齊，無法滿足日益精密的工業需求。世協電機自成立之初，即以技術創新與品質堅持為核心價值，成功研發出台灣首款斜齒齒軸小型交流馬達，以低噪音、高扭力、運轉平穩等特性迅速打響品牌知名度，並在短短六年間，成為國內小型交流馬達市場的領導品牌。

隨著市場對驅動系統的整合性需求不斷提升，我們不僅專注於小型交流馬達本身的技術突破，更將其與減速機結合，有效放大扭力、降低轉速，延伸出更多樣化的應用，精準對應自動化設備、搬運設備、輸送系統、包裝設備等產業的實際需求。這樣的組合設計不僅提高了效率與可靠性，也協助客戶簡化設計流程、節省安裝空間與成本，成為工業自動化系統中不可或缺的關鍵驅動模組。

延續在小型交流馬達領域的競爭優勢與市場一片好評中，世協電機積極擴充產品線，開發輸出功率範圍涵蓋 100W 至 2.2kW (約3HP) 的齒輪減速馬達，滿足中小型機械設備對穩定動力輸出的多樣化需求。這一階段的技術升級，不僅提升了產品的應用深度，也標誌著世協電機從「單一零組件供應商」逐步轉型為「驅動解決方案夥伴」的重要起點。

The SESAME Motor Brand Story

From Breakthrough to a Trusted Brand — The Journey of Sesame Motor

The Journey of Innovation: Pioneering Taiwan's Small AC Motor Industry

In 1990, as Taiwan's machinery industry entered a period of rapid growth, the demand for compact, high-performance drive components surged. Spotting both a gap and an opportunity, we founded **SESAME Motor**—a brand built on **technological innovation and a commitment to quality**, aiming to elevate Taiwan's presence in the small AC motor market.

While many motors on the market offered outputs from 6W to 90W, their quality varied and often failed to meet the increasing precision needs of industrial automation. From the very beginning, SESAME focused on solving this problem. We developed Taiwan's **first helical gear shaft small AC motor**, designed for **low noise, high torque, and stable operation**. This innovation not only set a new benchmark for performance but also quickly established SESAME as a trusted name in the industry.

As industrial systems evolved, we saw the growing need for **integrated drive solutions**. By combining our motors with precision gear reducers, we enhanced torque output and optimized speed control—expanding applications in **automated equipment, conveyors, transport systems, and packaging lines**. This integration helped customers improve efficiency, save installation space, reduce costs, and streamline their mechanical designs.

Backed by market success and strong customer feedback, SESAME expanded its product portfolio to include **gear motors from 100W to 2.2kW**, catering to mid-sized machinery and diversified power needs. This milestone marked our transition from a single-component supplier to a comprehensive **motion solution partner**.



把握時代契機，打造台灣自主精密傳動品牌的世代轉型

2000年前後，全球製造業快速邁入自動化轉型。歐美日等先進國家已建立完整的機械自動化體系，亞洲新興市場則加速導入 PLC 控制、伺服驅動與高精度設備，帶動對穩定、高效、精密傳動元件的龐大需求。當時高階零組件高度仰賴歐美進口，價格高、交期長，成為製造升級的瓶頸。世協電機洞察契機，結合多年齒輪與減速機製造經驗，投入行星減速機的自主研發，致力打造具備歐美等級性能，卻更具交期與成本優勢的台灣解決方案。

從首顆試作開始，世協已成功開發超過40種行星減速機產品系列，取得多項國際專利，產品可與全球知名大廠90%以上的機型無縫替換。堅持100%台灣製造，我們在品質與效率間找到最佳平衡。即使面對疫情與供應鏈動盪，仍穩健拓展歐美亞三大市場，逆勢成長。如今，世協行星減速機以自有品牌銷售遍及全球50多國，並於30國設有代理據點，與國際知名同業並駕齊驅，成為值得信賴的高階傳動品牌。

從財務會計專業到卓越領導：制度化管理的轉捩點

2006年，原本為公司簽證會計師的現任董事長江豐洲受推舉接管經營。憑藉專業會計背景與深厚的經營洞察，從外部顧問的角色轉為企業的引領者。他以專業財會人的視角，看見企業潛力與優化空間，積極導入制度化管理，並親自組建研發與管理團隊，著手打造標準化的製造流程與作業指導體系。透過系統化升級，讓產品品質更穩定、交貨速度更迅速，將交期壓縮至數天之內。這不僅大幅提升了客戶滿意度，也奠定了企業邁向國際品質水準的重要基石。



Seizing the Moment: Building a Precision Gear Brand Made in Taiwan

Around the year 2000, global manufacturing rapidly shifted toward automation. While Europe, the U.S., and Japan had already established mature automation systems, emerging Asian markets accelerated their adoption of PLC control, servo systems, and high-precision equipment. Yet, high-performance components remained reliant on costly, slow-imported Western brands. SESAME recognized the opportunity and leveraged its expertise in gear and reducer manufacturing to launch the **independent development of planetary gear reducers**. Our goal: to deliver European-grade performance with better cost and lead time advantages—fully made in Taiwan.

Starting with our first prototype, we've since developed over **40 planetary gearbox series**, secured multiple international patents, and achieved over **90% compatibility with leading global brands**. Maintaining 100% Taiwan-based production, we've found the perfect balance between quality and efficiency. Even amidst global disruptions like the pandemic and supply chain instability, SESAME continued to grow across **Europe, Asia, and the Americas**. Today, SESAME planetary gear reducers are sold under our own brand in **over 50 countries**, with a strong presence in **30+ global distribution points**. We stand shoulder to shoulder with world-renowned brands—recognized as a trusted name in high-performance transmission.

Leadership Transformation: From Financial Expertise to Systematic Growth

In 2006, Mr. Feng-Chou Chiang—formerly the company's external certified accountant—was appointed as CEO. With a strong financial background and sharp business insight, he transitioned from advisor to visionary leader. By introducing **systematic management**, Mr. Chiang rebuilt the R&D and operations teams and implemented **standardized production processes**. These reforms improved product consistency and drastically reduced lead times to just a few days. This transformation laid the foundation for SESAME to meet international standards and achieve high customer satisfaction.



品牌蛻變：從技術實力邁向全球視野

意識到品牌形象在國際市場中的重要性，世協電機全面重塑品牌識別系統，將品牌名稱

“SESAME”正式納入Logo設計，並以鮮明的紅色作為主色調，象徵活力與穩健。這一改變不僅提升了品牌辨識度，強化了品牌記憶點，隨著在全球三大洲各重要國家完成「世協SESAME Motor」商標註冊，也展現世協電機走向國際舞台的信心與企圖。這場品牌重塑，不只是視覺更新，更是世協電機從技術製造者蛻變為價值傳遞者的躍進，為日後行銷推廣與國際拓展奠定基礎。

同時，世協電機陸續取得UL、CE、CCC等多項國際產品認證及ISO管理系統驗證，讓產品具備國際通行資格，不僅站穩國內市占，也成功進軍全球市場。

穩健發展：從租賃到自有廠房，奠基永續未來

秉持「企業要穩，就要立足扎實」的信念，世協電機於2009年購置土地並興建新廠，2010年正式遷入自有廠區。這不僅結束了過去長年租賃廠房的不穩定局面，也象徵著世協電機正式邁入永續經營的新階段。

品質至上：不是口號，而是信仰

對世協電機而言，「品質」從來不是一句行銷用語，而是企業價值的核心。江董事長強調：「你做出來的產品，要能夠讓客戶滿意。客戶的信任，是企業永續經營的根基。」這份對品質的執著，不僅內化為每一位員工的日常準則，也讓世協電機在競爭激烈的機電市場中屹立不搖，成為眾多知名企業長期合作的首選供應商。

結語：從台灣出發，邁向國際的動力夥伴

35年來，世協電機用一步一腳印的態度，從台灣在地品牌走向國際化的專業製造商。我們相信，唯有專業、誠信與創新，才能真正贏得客戶的信任。未來，世協電機將持續以穩定品質、良善服務與技術升級為核心動力，為客戶創造價值，成為更多產業背後最堅實的驅動力量。



RoHS **CE** **CCC** **C** **UL** **US**



Brand Evolution: From Engineering Expertise to Global Presence

Understanding the importance of brand identity in the global marketplace, SESAME Motor underwent a complete **brand identity overhaul**. The brand name “SESAME” was officially incorporated into the logo, paired with a bold red color to symbolize vitality and reliability. This visual refresh enhanced brand recognition and reinforced brand memory across international markets. With trademark registrations completed in major countries across three continents, SESAME is ready to take the global stage with confidence and determination. More than a design update, this brand transformation reflects SESAME’s evolution—from technical manufacturer to **value-driven brand ambassador**—laying a strong foundation for global marketing and strategic expansion.

At the same time, SESAME has achieved **UL, CE, CCC, and ISO certifications**, securing qualifications for global market access and strengthening our position as a top-tier brand in both domestic and international markets.

Built to Last: Our Own Manufacturing Base

In 2009, SESAME acquired land and began construction on a new facility. By 2010, the company had moved into its **wholly owned headquarters and production plant**. This shift marked the end of years of leased operations and the beginning of a new era of **sustainable growth and long-term commitment**.

Our Belief: Quality, Always

At SESAME, quality is never just a marketing buzzword—it’s a deeply held conviction. As Chairman Chiang emphasizes,

"The products you make must satisfy your customers. Their trust is the foundation of sustainable business."

This dedication to quality has become second nature for every SESAME team member. It is the reason we have remained resilient in the competitive electromechanical industry and continue to be the **preferred long-term partner for leading companies worldwide**.

From Taiwan to the World —Your Trusted Motion Partner

For over 35 years, SESAME Motor has taken one steady step after another—from a local Taiwanese brand to a globally recognized motion solution manufacturer. We believe that only **professionalism, integrity, and innovation** can earn lasting customer trust.

Moving forward, we will continue to elevate our quality, service, and technology to **create lasting value for our partners**, and become the **driving force behind the world’s most dynamic industries**.

Premium Type
極精密型


PGH



PHL



PUL



PHF



PUR



PHFR

Precision Type
精密型


PGLH



PGEH



PGCH



PUA



PGF



PGL



PGE



PGC



PGSH



PGRH



PGFR



PGR



PGCHR

Primary Type
泛用型


PEE



PAE



PBE



PGS



PAN



PEC



PAC



PBC



PNS



PAER



PANR



PACR



PNSR

AGV/AMR Gearboxes
AGV/AMR 專用行星式減速機


PGV



PGVR

Servo Spiral Bevel Gearboxes
多輸出軸螺旋傘齒輪減速機


PT/PTS

Stainless Steel Gearboxes
不鏽鋼行星式減速機


SGC



SGE

Hollow Shaft Gearboxes
滾珠螺桿專用行星式減速機


PGW



PGWR

Ultra High Stiffness & Rigidity Gearboxes
超高剛性、超高扭矩行星式減速機

Frame Size > 300 mm
框號 > 300 mm
PGHA/PGHX

In-line
平行出力軸

Right Angle
直角型

Ultra High Stiffness & Rigidity Gearboxes

超高剛性、超高扭矩行星式減速機

NEW



Features

- Frame size 220 mm up to 300 mm and above. Customization available.
- Designed for large double column machine center or horizontal machine tools.
- Extra high torque and stiffness, no distortion or shake under high loading.
- Backlash as low as 1 arc-minute, ultimate performance.
- IP65 enclosure and service life synthetic lubricant.

特點

- 框號220 mm起，最大可達300 mm以上。可依特殊需求客製。
- 大型龍門機床、臥式鏜銑床、橡塑膠機械專用。
- 超高剛性、超高扭矩。高負荷或急起急停時不扭曲變形、無震盪。刀塔可立即加工，無需等待。
- 極精密背隙可達1弧分，高階應用性能。
- IP65防護等級、全合成潤滑油、終身免保養。

Hollow Shaft Gearboxes

滾珠螺桿專用行星式減速機



Features

- In-line planetary gearhead with zero slip clamping mechanism.
- Ready to mount to ball screw modules or cartesian robotics.
- Alloy steel precision gears, ratios up to 1000:1.
- Lubricated for life and IP65 sealing.
- Low noise, low vibration, maintenance-free.

特點

- 輸入輸出端鎖緊環皆經動平衡分析，確保同心度及零滑差動力傳遞。
- 滾珠螺桿或單軸機器人專用。
- 特殊齒輪加工至最佳精度與耐磨耗度。
- 高效率、低噪音、最高減速比1000:1。
- IP65防護等級、全合成潤滑油、終身免保養。

Stainless Steel Planetary Gearboxes

不鏽鋼行星式減速機



Features

- Corrosion resistance, fast and easy to clean.
- For food, pharmaceutical, cosmetics, aerospace, anti-magnetic industries and machinery.
- Permanent laser engraving label, IP65 enclosure, lubricated for life.
- Customized requirements or high level IP protection are available.

特點

- 抗腐蝕不鏽鋼材質，圓滑外形清洗簡便。
- 可選配食品級潤滑油，無汙染，終身免換油、免保養、省成本。
- 適用食品、製藥、化學、生技、航太、抗磁性等嚴苛應用環境。
- 可接受客製化特殊需求。例如低溫使用環境、IP67防塵防水等級、升級抗腐蝕能力等。

Planetary Gearboxes for AGVs & AMRs 無人搬運車、自主移動機器人專用減速機

NEW



Features

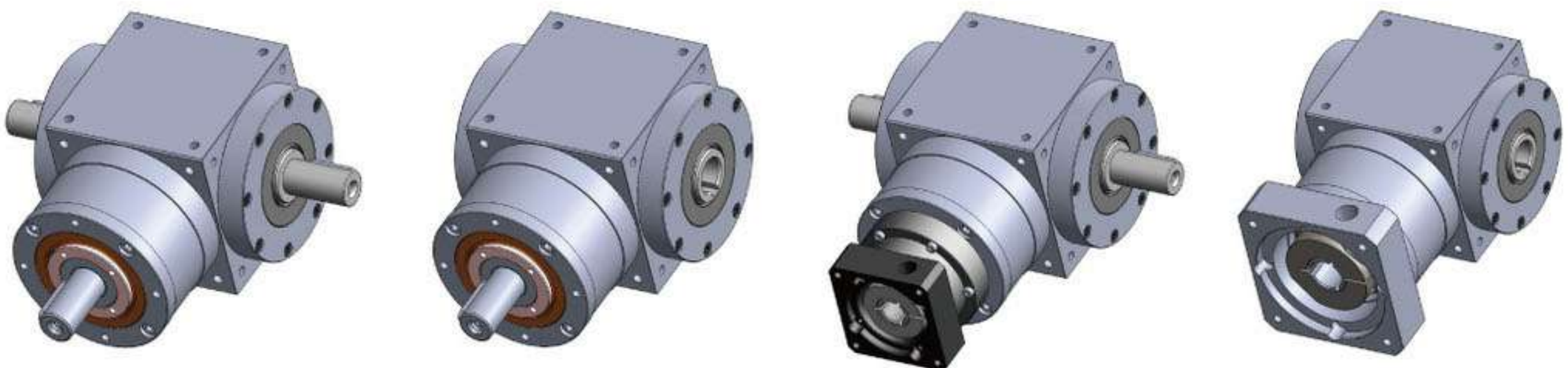
- Designed for AGVs and AMRs driving units. High rigidity and radial load capacity.
- Direct mounting of motor and wheel to save installation space.
- Low backlash, low noise, high efficiency.
- IP65 enclosure and service life synthetic lubricant.

特點

- AGV與AMR驅動模組專用。高扭轉剛性、高徑向負載能力。
- 減速機直結馬達與驅動輪，節省安裝空間。
- 精密背隙、傳動效率高、低噪音。
- IP65防護等級、全合成潤滑油、終身免換油、免保養。
- 馬達連接板適用各廠牌伺服馬達與直流馬達。

Spiral Bevel Gearboxes 多輸出軸螺旋傘齒輪減速機

NEW



Features

- Compact and rigid design ensure performance within light and small gearbox size.
- High rigidity, low noise, low vibration.
- 7 frame sizes, 22 ratios, max. ratio 500:1, multi configurations.
- Tapered roller bearings, high axial and radial load capacity.
- Lubricated for life and IP65 sealing.
- High operating efficiency more than 98%.

特點

- 結構緊湊，高剛性設計，確保在體積小、重量輕的情況下能達到最高性能。
- 高強度、高剛性、低噪音、低震動。
- 7種框號、22種減速比、最高減速比500:1，多樣化機種規格搭配選擇。
- 錐狀軸承應用，高徑向負載與荷重能力。
- 傳動效率>98%，大大節省能源成本。
- IP65防護等級，不洩漏、免保養、終身免換油。

AC Motors (6W-90W) + Speed Reducers 小型感應馬達(6W-90W)+減速機



Features & Types

- Uni-directional and continuous operation.
- Variable AC power input options.
- Output 6W up to 90W.
- Wide ranges of model work with magnetic brake, speed reducer and control circuits.
- Thermo switch available (optional).
- CE (EMC & LVD) 、UL 、CCC certified.

特色與機型

- 對應全球電壓規格，提供AC電源即可運轉。
- 6W~90W輸出，可依需求結合減速機、剎車器或控制回路使用。
- 機種齊全：可逆式馬達、無段變速馬達、煞車馬達、離合煞車馬達、轉矩馬達。
- 內建溫控保護開關(選配)。
- CE (EMC & LVD)、UL、CCC認證。
- 最適合單向連續運轉、正逆轉之自動化輸送設備。

Speed Reducers 減速機



Features & Types

- Integrated gear box contributes precision and efficiency.
- Ball bearing + closed gear box ensure radial and axial loading capacity.
- Low noise and long service life.
- BLDC compatible (GB series).
- Gear ratio 3~180.

特色與機型

- 與馬達結合可降低轉速、提高轉矩、應用廣泛。
- 一體成形齒箱，精度高、效率佳。
- 可承受更高之側向力與軸向力。
- 滾珠軸承+封閉式齒箱設計，低噪音、壽命長。
- 無刷直流馬達專用GB系列。
- 減速比3~180比。

Variable Speed Motors (6W-90W) / Assembled Type Speed Controller 調速馬達(6W-90W) / 組合型速度控制器



Circuits, capacitor and variable resistor are assembled in controller, which is attached to motor via extended cable. Ready-to-use once power is supplied.

Features

- Easy wiring and speed control.
- Built-in electronic brake circuits for instant braking.
- Wide range of variable speeds.
- Parallel rotation performance.
- High-responsive and great stability in speed control.
- Connection with other control systems is available.

控制用迴路、運轉電容及可變電阻等均組合在控制器內，並採用延長線與馬達連結，只要接上電源即可使用。

特點

- 配線簡單，速度控制容易。
- 內建電子式煞車迴路，具瞬時剎車功能。
- 速度變化範圍寬廣。
- 具備並列運轉之功能。
- 高應答性、高安定性之速度變化。
- 能與其他控制系統連結。

Variable Speed Motors (6W-90W) / Separated Type Speed Controller 調速馬達(6W-90W) / 分離型速度控制器



According to different purposes and needs, induction and reversible motors equipped with generators will adopt various wiring methods and controller types.

Features

- Easy wiring and speed control.
- Built-in electronic brake circuits for instant braking.
- Wide range of variable speeds.
- Parallel rotation performance.
- High-responsive and great stability in speed control.
- Connection with other control systems is available.

附轉速發電機的感應式與可逆式馬達，可依據用途及需求而採用不同的配線方式與控制器連結。

特點

- 配線簡單，速度控制容易。
- 內建電子式煞車迴路，具瞬時剎車功能。
- 速度變化範圍寬廣。
- 具備並列運轉之功能。
- 高應答性、高安定性之速度變化。
- 能與其他控制系統連結。

Gear Motors 齒輪馬達



Features & Types

- Impact size and structure with precision gear process ensure low vibration and noise.
- Aluminum housing benefits heat diffusion.
- Output 100W (1/8HP) up to 2200W (3HP).
- Wide range of application with brake and various AC power supply options.
- Thermo switch available (optional).
- CE (EMC & LVD) 、UL 、CCC certified. IP65 enclosure (optional).

特色與機型

- 體積小、結構緊湊，齒輪經精密加工，振動小、噪音低。
- 輕量化鋁壓鑄材質齒箱，散熱性佳。可搭配煞車器，應用廣泛。
- 對應全球電壓規格，100W (1/8HP) ~ 2200W (3HP) 足瓦輸出。內建溫控保護開關(選配)。
- CE (EMC & LVD)、UL、CCC認證。IP65防護等級(選配)。

Gear Motors 組合式齒輪馬達



Features & Types

- Modular products for the optimum flexibility. Gear ratio 3~180.
- Impact size and structure with precision gear process ensure low vibration and noise.
- Aluminum housing benefits heat diffusion.
- Output 100W (1/8HP) up to 750W (1HP).
- Wide range of application with brake and various AC power supply options.
- Thermo switch available (optional). IP65 enclosure (optional).

特色與機型

- 組合式馬達與減速機設計，彈性搭配各式減速比使用。減速比3~180比。
- 體積小、結構緊湊，齒輪經精密加工，振動小、噪音低。
- 輕量化鋁壓鑄材質齒箱，散熱性佳。可搭配煞車器，應用廣泛。
- 對應全球電壓規格，100W (1/8HP) ~ 750W (1HP) 足瓦輸出。
- 內建溫控保護開關(選配)。IP65防護等級(選配)。

Why Sesame Motor?

Sesame Motor is an ISO 9001 and ISO14001 certified company offering CE, CCC, UL certified power transmission products. We offer expertise to assist in selecting the appropriate solutions to meet your needs from pre-sales consultative discussion, order follow up to delivery, and everything related to products usages and maintenance. There are more than 30 agents and distributors providing global users with application analysis and after-sales services. We deliver products that consistently meet customer requirements, satisfaction and offer service that can be relied on.

為什麼要選擇世協的產品?

世協已分別取得ISO9001和ISO14001的驗證，所提供的馬達與齒輪馬達產品亦取得UL、CE、CCC等國際驗證，產品線更擴及全系列的伺服馬達專用行星式減速機、螺旋傘齒輪減速機與諧波減速機。我們提供專業，協助您選擇合適的解決方案來滿足您的需求，從售前諮詢討論、訂單進度掌握到交貨，以及與產品安裝、使用與維修相關的任何問題。SESAME不僅是國內高市佔率品牌，而且已行銷全球50多個國家，擁有30多家代理商和經銷商，為全球客戶提供應用分析與售後服務。我們不僅能提供滿足客戶需求的產品，更能提供值得信賴的服務。





世協電機股份有限公司
SESAME MOTOR CORP.

429013 台中市神岡區和睦路一段599號

599, Sec 1, Hemu Rd., Shengang,

Taichung 429013, Taiwan

TEL: +886-4-2561-0011

FAX: +886-4-2562-7766

info@sesamemotor.com.tw

www.sesamemotor.com



V4.1

RoHS **CE** **CCC** **cUL[®]US**

