

ST series

DEEP HOLE DRILLING MACHINE

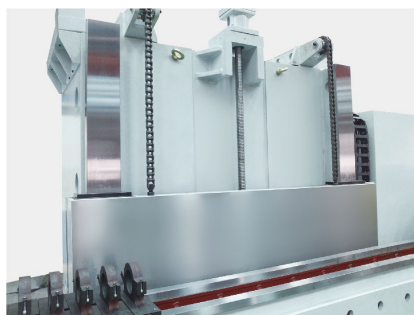
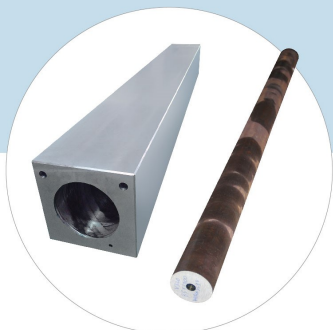
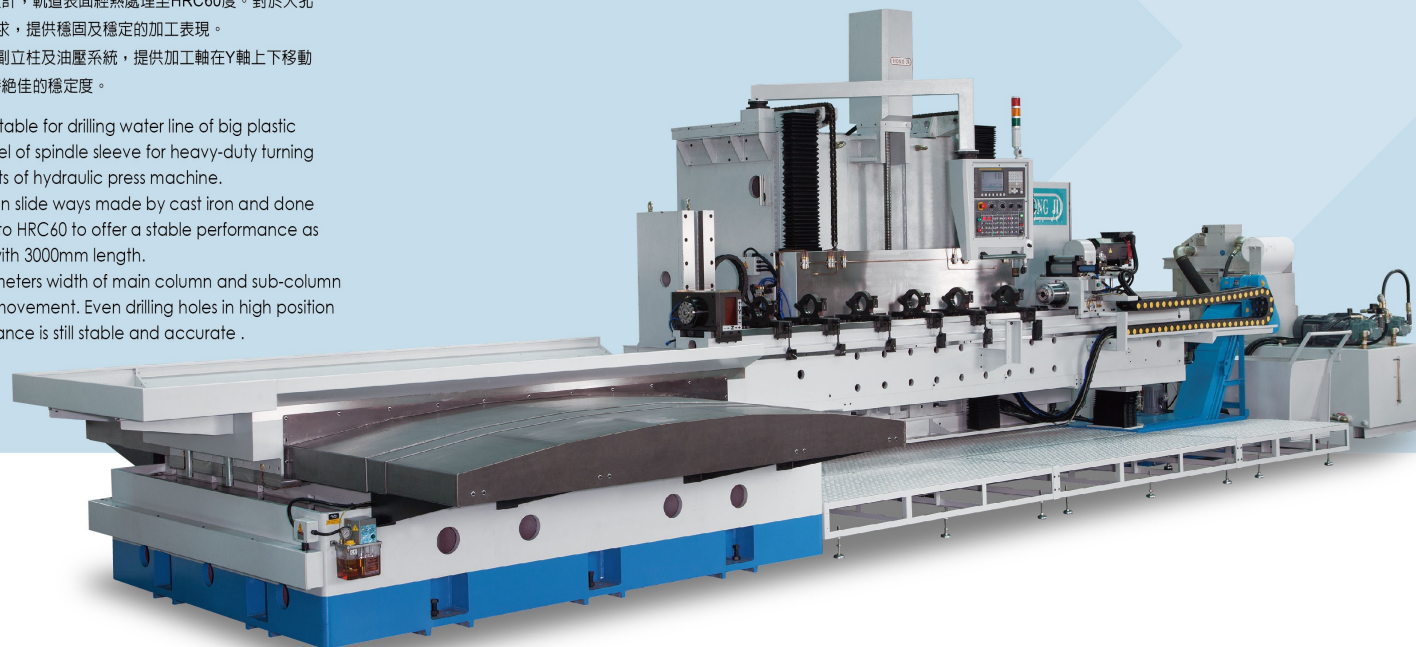
Bed Type

ST3000

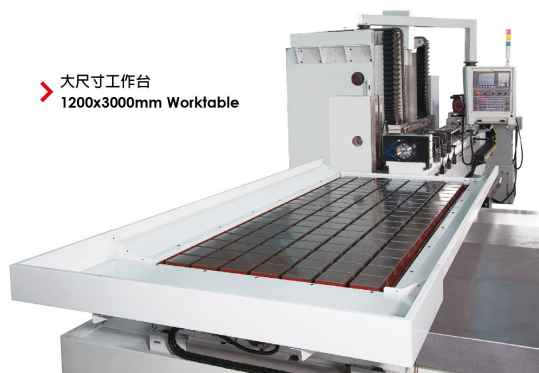
HONG JI®

特性 Features :

- ST3000深孔加工機適合加工大型模具水孔、大型機械零件冷卻孔和油路孔等。
- 全機軌道採用硬軌設計，軌道表面經熱處理至HRC60度。對於大孔徑及深度3米鑽孔需求，提供穩固及穩定的加工表現。
- 面寬2米大立柱搭配副立柱及油壓系統，提供加工軸在Y軸上下移動及高位加工時，保持絕佳的穩定度。
- This machine is suitable for drilling water line of big plastic moulds, oil channel of spindle sleeve for heavy-duty turning machine and parts of hydraulic press machine.
- All axes are harden slide ways made by cast iron and done surface hardness to HRC60 to offer a stable performance as drilling big holes with 3000mm length.
- Equipped with 2 meters width of main column and sub-column to support Y-axis movement. Even drilling holes in high position of Y-axis, performance is still stable and accurate.



2米寬立柱
2 meter wide column



大尺寸工作台
1200x3000mm Worktable

規格 Specification	型號 Model	ST-3000
控制器 Controller	CNC	Fanuc / Mitsubishi / Siemens / Other
鑽孔能力 Drilling Capacity	主軸數 Spindle number	1
	鑽孔範圍 Drilling diameter	ø5-ø40mm
	鑽孔深度 Drilling depth (Z)	3,000mm
行程 Travel	X軸 Table cross travel (X)	1,000mm
	Y軸 Spindle vertical travel (Y)	800mm
速度 Speed	進給速 Drilling feed	10-250mm/min
	主軸轉速 Spindle rpm	0~6,000
高壓油泵 High pressure pump	切削油壓 Pressure	0~80kg/cm ²
	出油量 Outflow	30~100L/min
	油箱 Oil tank	1,500L
工作台 Worktable	工作台尺寸 Table dimensions	1,200x3,000mm
	最大載重 Maximum loading weight	20,000kgs
	其他功能 Optional function	Milling&Tapping
其他 Other	機台重量 Machine weight (Kg)	38,000kgs
	機台尺寸 Machine dimensions (including accessories)	3700x11200x3300mm