



Powerful



Prevent lifting

MC UNIVERSAL POWER TILTING VICE

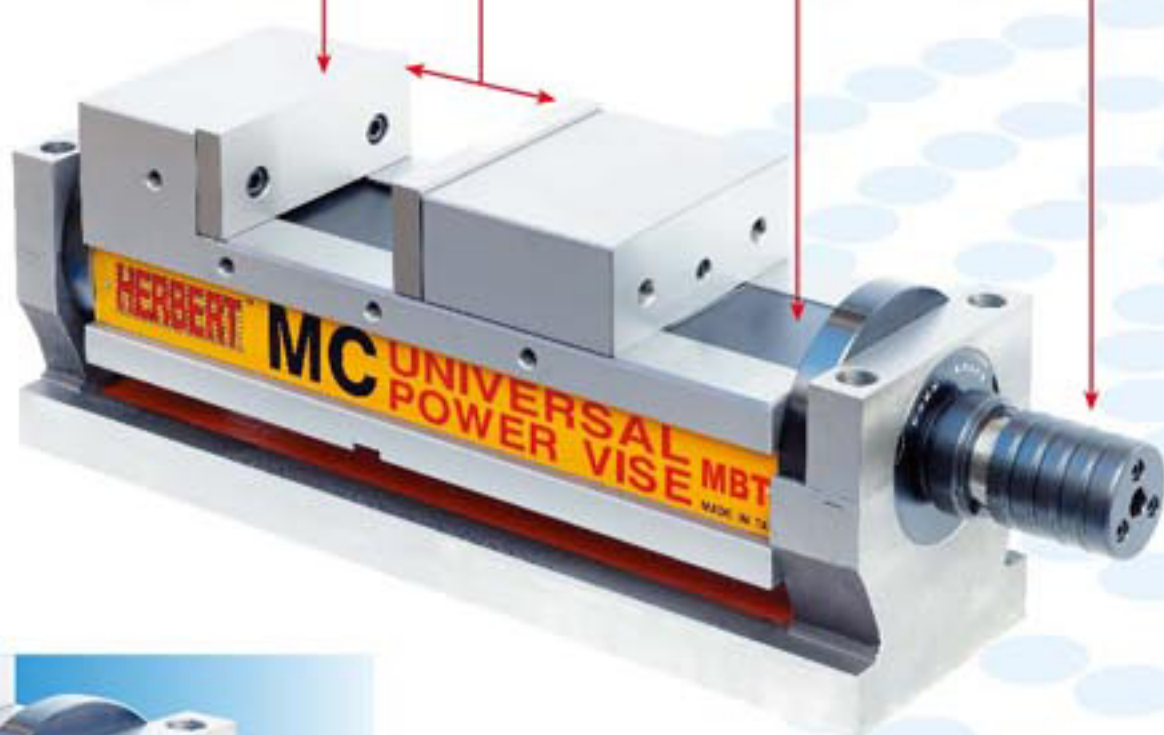
CORNER Most kindly design to considered every tiny point.

The jaw more deeper than those of same grade vice.. Can clamping higher work piece correctly.

New development patented, oil-free powerful mechanical boost system, which gives greater clamping and never collapsing pressure.

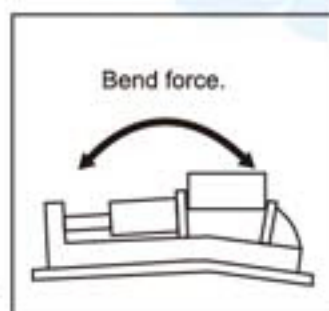
Double opening than those of same grade vice. Can easy clamp longer work piece.

Chip cover adopted, preventing chips falling into causing bad motion.



FEATURES:

- The vice different form conventional vice, than can be adjusted angle of workpiece directly, perpendicular direction adjustable angle from 0X to 50X, which can read process angles accurately.

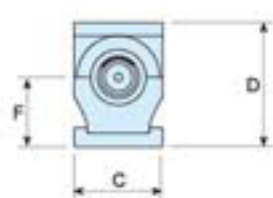
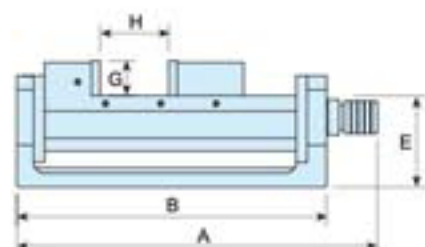


High strength. High accuracy.

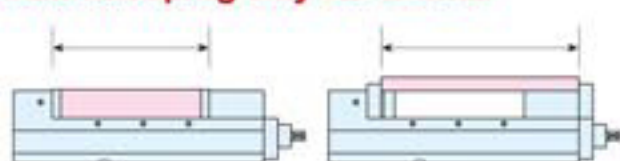
Perpendicular rib structure with strain of vice. It could hardly

— 19 —

ISO-9001:2008



Two clamping way for choice

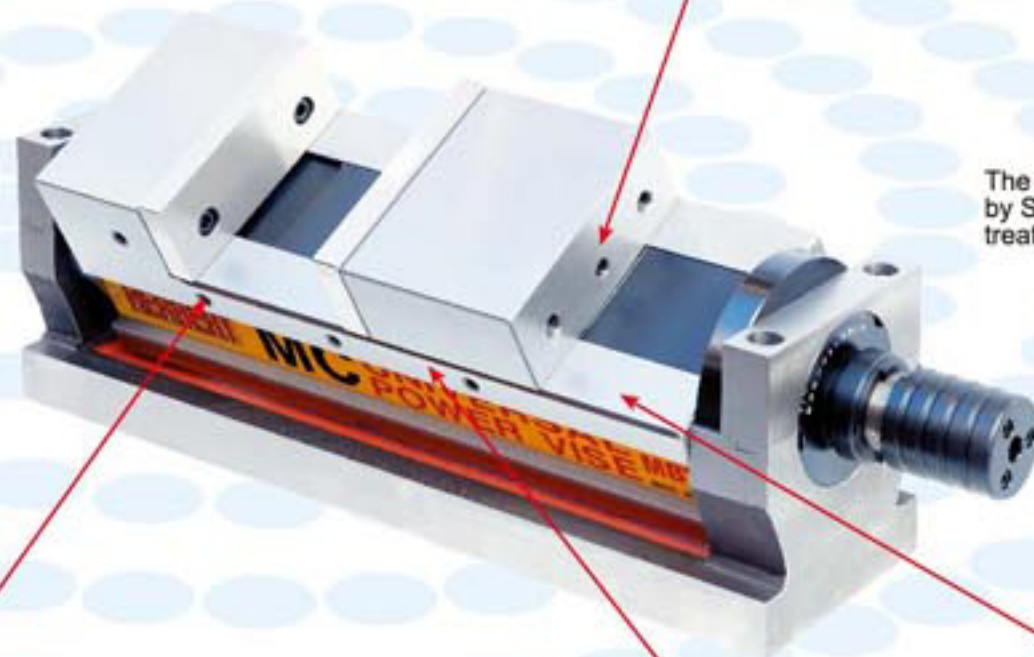


MODEL	A	B	C	D	E	F	G	H	adjustable angle	N.W.	G.W.	POWER
MBT-160	645	550	160	225	165	126	63	200	0°-50°	75kg	80kg	5500kgf

PATENT NUMBER
184869 201150 249761
256258
GERMANY 201125447
CHINA ZL01231630X



This unit had prevent lifting structure, when clamping in down direction power also acting, so the workpiece and movable parts lift very small, furthermore, the body and solid jaw is a combination structure, it does not tilt.



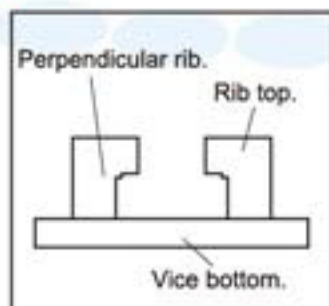
The whole Swivel Base are made by Stainless Steel, with harden treatment, durable and high accurate.

Standard Accessories

- 1.Handle-1 set
- 2.Guide key-2pcs
- 3.Screw-M6x10Lx2pcs
- 4.Chip cover
- 5.Vise locked block-4pcs

Optional Accessories

- 1.Special application jaw plates
- 2.Vise positioner
- 3.Swivel Base
- 4.Opening jaw plates
- 5.Sleeve spanner



Ductile cast iron spring.



Microphotograph for ductile cast iron



The common contact face and slide face of movable parts both with good wear resistance of treat treatment (over HRC45°)

which has great resistance to bending due to clamping to bring bend.

Ductile cast iron is fit to produce rigid precision items, which have three times strength than same grade vise due to used ductile cast iron.

— 20 —