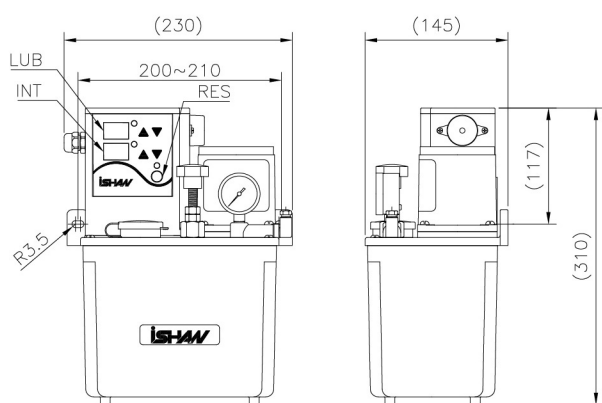


YAE-A1

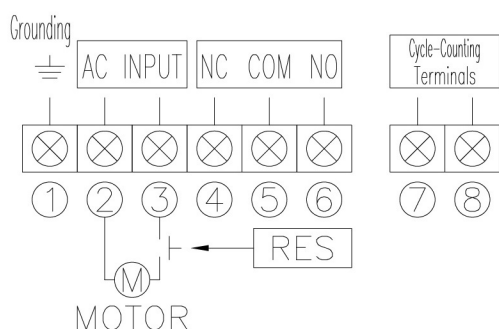
Resistant Type Electric Lubricator



3L



3L



YAE-A1 Resistant Type Electric Lubricator

1. CE mark
2. Three operation modes as follows
 - (a) Lubrication : run lubrication time after the pump is switched on.
 - (b) Intermittence : run intermittent time after the pump is switched on.
 - (c) Memory : run previous action and remaining time after the pump is switched on.
3. Lubrication and intermittent time are adjustable.
4. Lubrication (second/minute) and intermittent (second/minute/hour/cycle) time units are adjustable.
5. The intervals can be set up based on machine operation cycle.
6. The indicator on the panel can display the operation of the lubricator.
7. Check valve equipped to prevent the reverse flow.
8. The motor is designed to continuously run.
9. The over temperature/load protector is attached to protect the motor.
10. The pressure relief valve equipped on the lubricator can prolong the system life and reduce damage on the gear pump and tubing.
11. Float switch(NO contact) is designed to output signal and alarm when the lubricant is insufficient.
12. Pressure switch is upon request.
13. "RES" key can force the lubricator to feed the lubricant.
14. Feed the lubricant through proportion devices or other metering distributors.

Model	YAE-A1		YAE-A1P1	
Voltage (Single Phase)	110V or 220V			
Consumption Power (W)	56			
Output Power (W)	25			
Capacity of Terminal Output	0.5A			
Lubrication time (second/minute)	1-999			
Intermittent Time (second/minute/hour/cycle)	1-999			
Output Bore	Ø4 or Ø6			
Max. Output Pressure MPa (kgf/cm²)	1 (10)			
Output Volume (cc/ min)	250 (Standard), 400 (Option)			
Pressure Release device	X			
Float Switch	O			
Pressure Switch	X		O	
Pressure Gauge	O			
Alarm Beeper	O			
Tank Capacity (L)	3	4	4(Metal)	8
Weight (kg)	4.2	4.5	4.9	10.3

Order Code | YAE - A1 **P1** **003** **P** B 0 - **1** **06** **B**

Control type	Pressure monitoring	Reservoir	Reservoir material	Mounting	Oil return device	Voltage	Output bore	Output
A1 = Digital timer	P1 = with Null = without	003 = 3L 004 = 4L 006 = 6L 008 = 8L 020 = 20L	P = Resin (3/4L) S = Steel (6L up) A = Aluminum (Only 4L)	B= Rear bracket	0 = without	1 = 110V 2 = 220V	04 = 4mm 06 = 6mm	B = 25W 250 c.c./min. C = 25W 400 c.c./min.