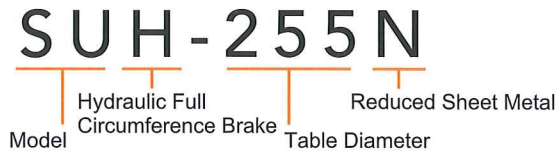


SUH series CNC ROTARY TABLE Hydraulic Full Circumference Brake

- Table diameter provides a choice of Ø255, Ø320, Ø400, Ø500, Ø630 and Ø800mm.
- Employs high rigidity, extra large radial and axial bearing.
- Upon request, models with table diameter of Ø255, Ø320 and Ø400mm can be equipped with Japanese made worm/worm gear.
- Designed with the new full circumference brake that features even braking force without run-out. High torque, easy lubrication as well as compact, rigid and enclosed structure ensure high cutting quality.
- Big hole design makes machining more convenient. Manufactured from high quality, durable cast iron. Increased body thickness increases load resistance capability. Large through-hole diameter. High strength, heavy cutting resistance as well as high precision.
- Various sheet metal guards are available to suit various brands of motors. Contact us for detail.

SUH-255	SUH-320
SUH-400	SUH-500
SUH-630	SUH-800

Model Identification of Rotary Table

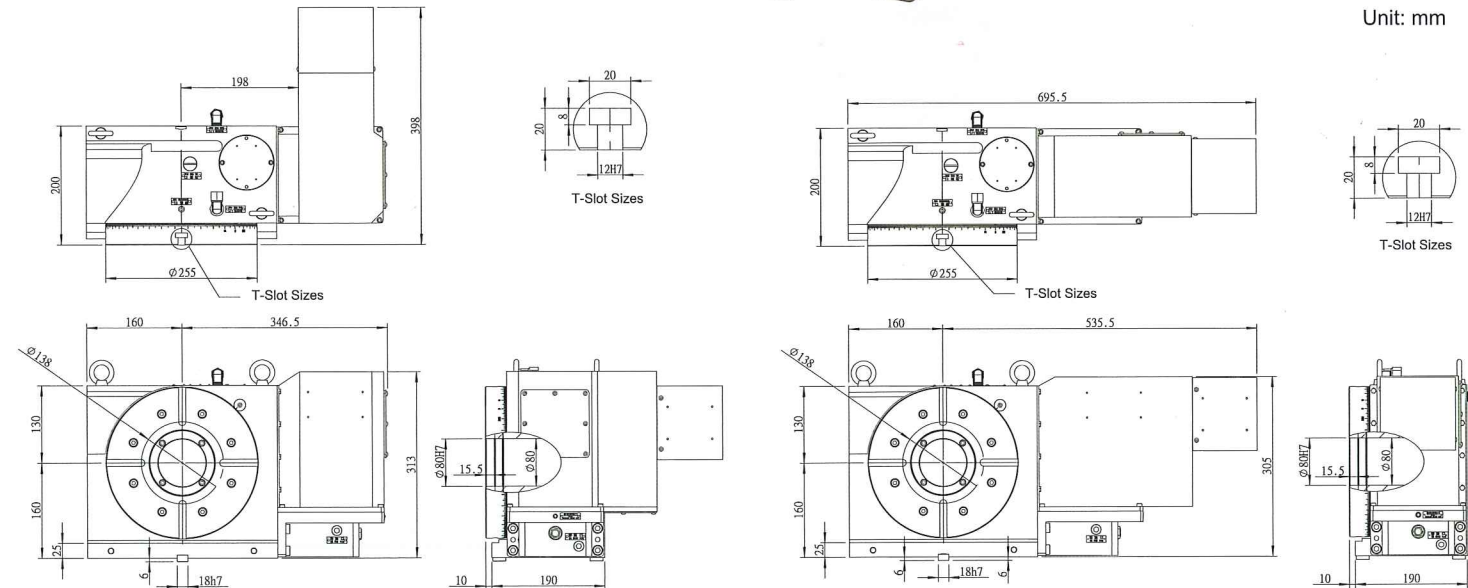


MODEL	UNIT	SUH-255	SUH-320	SUH-400	SUH-500	SUH-630	SUH-800	
Table diameter	mm	Ø255	Ø320	Ø400	Ø500	Ø630	Ø800	
Center hole diameter	mm	Ø80H7	Ø120H7	Ø120H7	Ø220H7	Ø280H7	Ø280H7	
Through-hole diameter	mm	Large hole Ø80	Large hole Ø120	Large hole Ø120	Large hole Ø220	Large hole Ø280	Large hole Ø280	
Height of center (Vertical)	mm	160	210	255	310	400	480	
Height of table (Horizontal)	mm	200	235	250	290	325	345	
T-slot width of table	mm	12H7	14H7	14H7	18H7	18H7	18H7	
Width of guide block	mm	18h7	18h7	18h7	18h7	18h7	22h7	
Min. increment	deg.	0.001	0.001	0.001	0.001	0.001	0.001	
Indexing accuracy	sec.	15	15	15	15	15	15	
Repeatability	sec.	4	4	4	4	4	4	
Clamping method	Hyd. pressure	kg/cm ²	35	35	35	35	35	
Clamping torque	N.m	600	1150	2000	3700	6000	6000	
Servo motor model	FANUC	-	α4i / β8is	α12i / β22is	α12i / β22is	α12i / β22is	α22i	
	Mitsubishi	-	HF-154S	HF-204S	HF-204S/HF-303S	HF-204S/HF-303S	HF-354S	HF-354S
Teeth ratio	-	1 : 120	1 : 120	1 : 120	1 : 180	1 : 180	1 : 180	
Max. table speed (FANUC α motor)	rpm	33.3	25	25	16.6	16.6	16.6	
Allowable load capacity	Vertical	kg	110	170	220	350	980	1050
	Horizontal	kg	260	370	520	600	2000	2000
	With tailstock	kg	260	370	520	600	2000	2000
Allowable cutting force (Clamped status)	F	N	20000	30000	40000	40000	49000	50000
	FxL	N.m	1120	1800	4000	5000	8500	10000
	FxL	N.m	700	1180	2500	3200	4500	5200
Allowable torque of worm gear	N.m	550	780	1700	2500	4300	5000	
Allowable inertia $J = \frac{W \cdot D^2}{8}$	kg.m ²	2.07	4.5	10	19	45.5	122	
Weight (Motor excluded)	kg	108	195	314	406	686	1102	

The specifications, dimensions and design characteristics shown in this catalogue are subject to change without prior notice.

Dimensional Drawings:

SUH-255

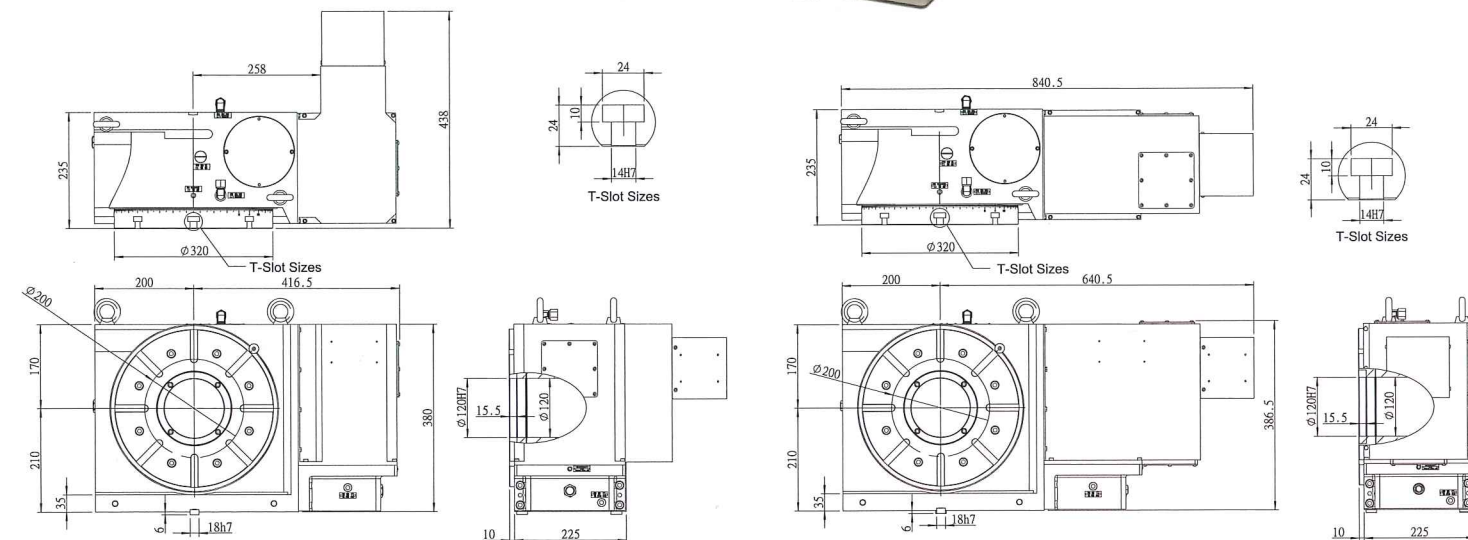


SUH-255N

SUH-255

Unit: mm

SUH-320



SUH-320N

SUH-320

Unit: mm

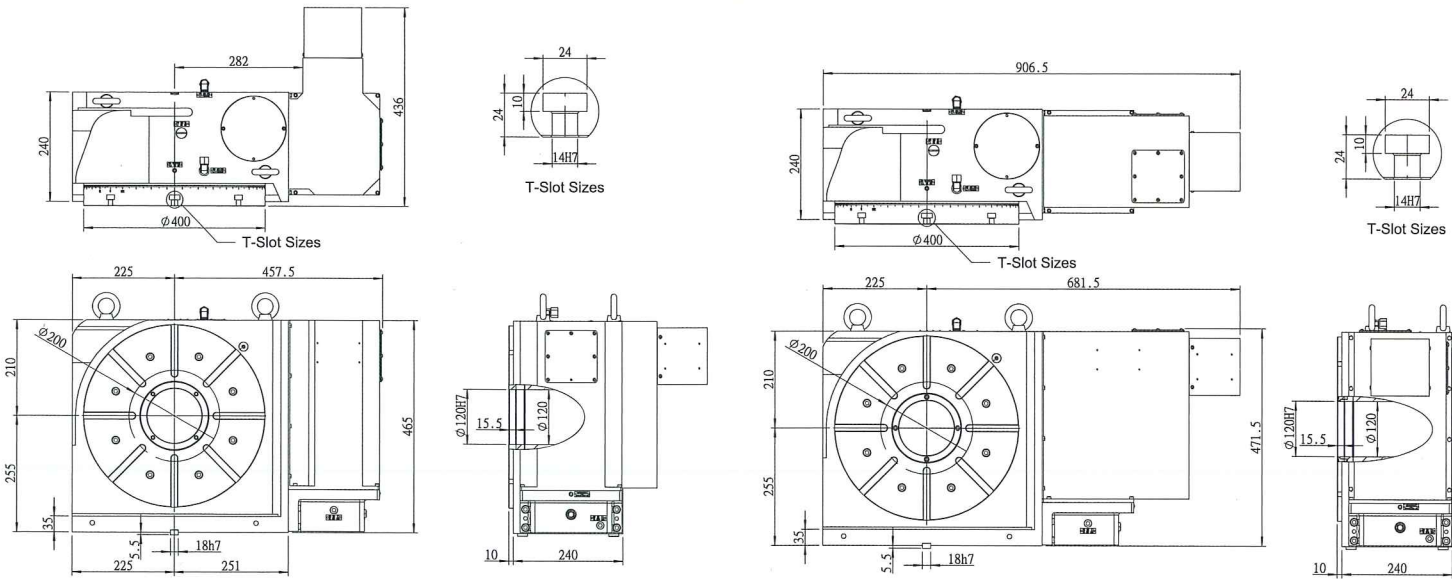
* PAINTING COLOR: Choice of shining silver or yellow color.

Dimensional Drawings:

SUH-400



Unit: mm

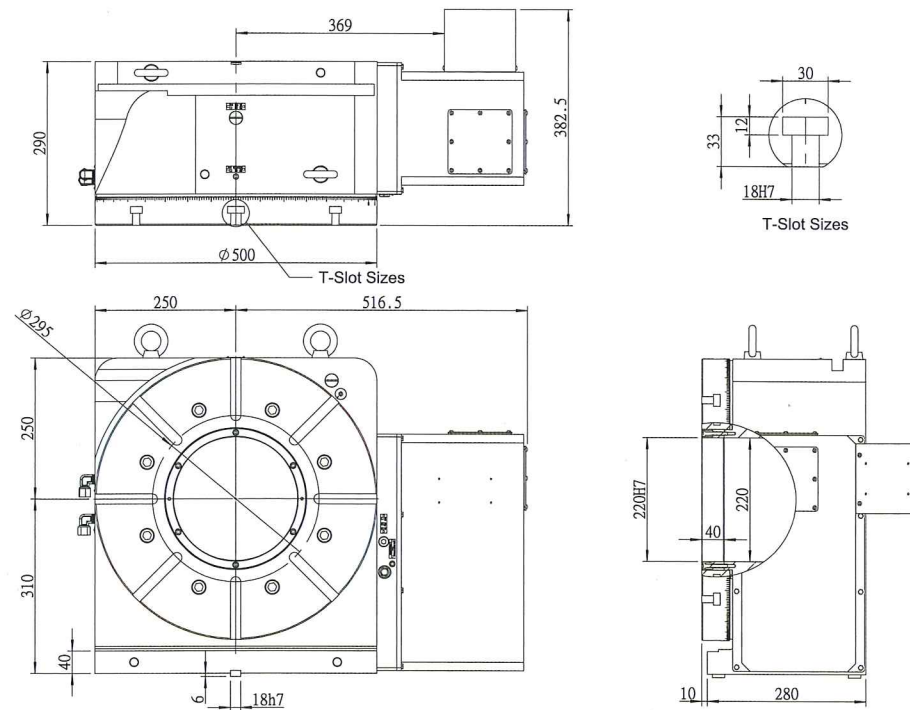


SUH-400N

SUH-400

SUH-500

Unit: mm

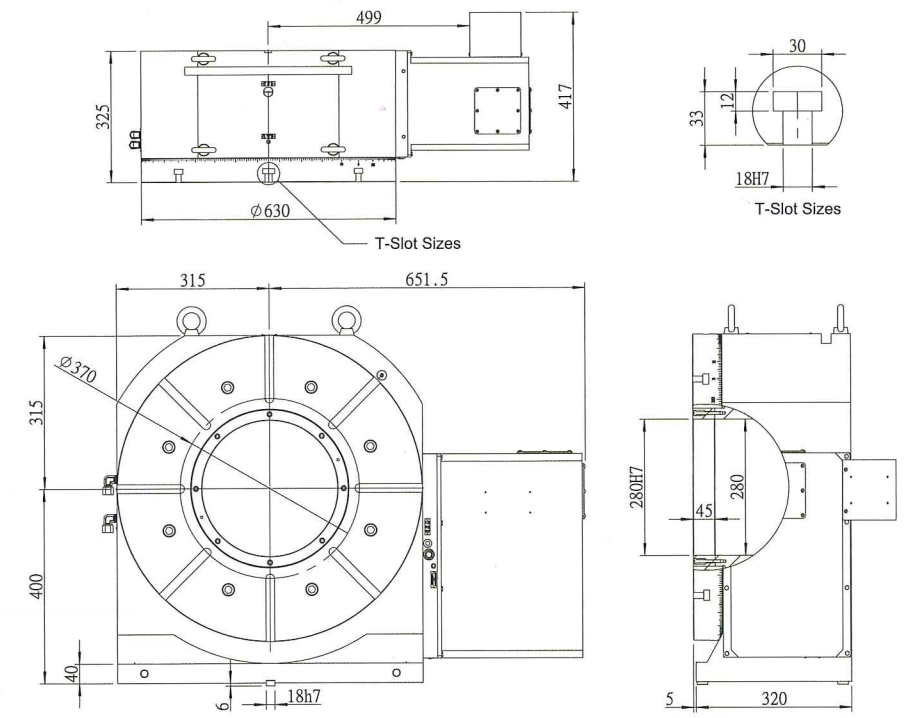


* PAINTING COLOR: Choice of shining silver or yellow color.

Dimensional Drawings:

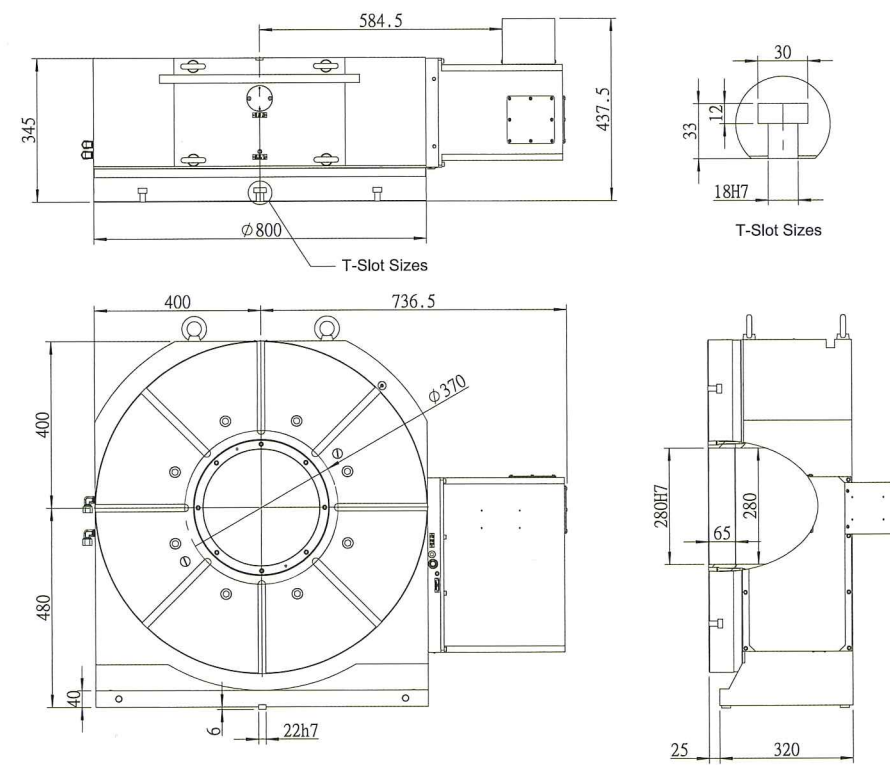
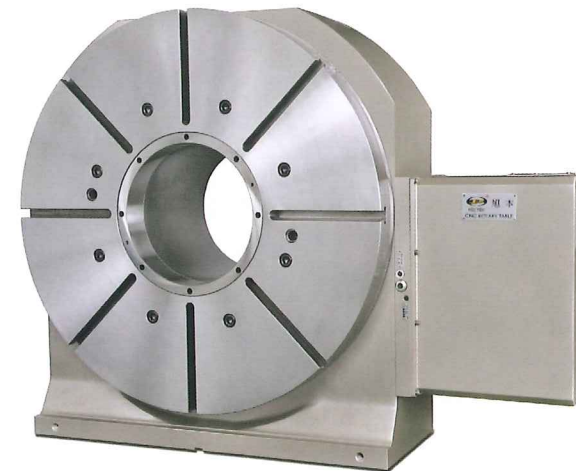
SUH-630

Unit: mm



SUH-800

Unit: mm



* PAINTING COLOR: Choice of shining silver or yellow color.