

NS/NU



BENCH TYPE MANUAL BRAKE

- 1 Two pieces counter weight. (Except 22 gauge machine).
- 2 Hand brake NS model, including one pair of bendingails.
- 3 Box & pan brake NU model, including fingers assortment of 51mm x 5 + 76mm x 6 + 101mm x 5 = 16pcs (2" x 5 + 3" x 6 + 4" * 5 = 16 pcs)

STANDARD ACCESSORIES

BOX & PAN BRAKE

MODEL	NU-4822	NU-4816	NU-5016	NU-6016	NU-7216	NU-9616	NU-12016
Capacity Mild Steel	0.8mm x 1220mm (22GA x 48")	1.6mm x 1230mm (16GA x 48")	1.6mm x 1270mm (16GA x 50")	1.6mm x 1550mm (16GA x 61")	1.6mm x 1830mm (16GA x 72")	1.6mm x 2440mm (16GA x 96")	1.6mm x 3048mm (16GA x 120")
Max. Lift of Beam	22mm (7/8")	44mm (1-3/4")	44mm (1-3/4")	44mm (1-3/4")	44mm (1-3/4")	44mm (1-3/4")	44mm (1-3/4")
Beam Adjustment	8mm (5/16")	16mm (5/8")	16mm (5/8")	16mm (5/8")	NIL	NIL	NIL
Packing Size(mm)	1630x450x700	1630x600x750	1670x600x750	2000x650x820	2400x650x1050	3050x650x1100	3650x650x1150
Packing Weight	130kgs	210kgs	230kgs	280kgs	500kgs	830kgs	1,000kgs

STRAIGHT HAND BRAKE

MODEL	NS-4822	NS-4816	NS-5016	NS-6016	NS-7216	NS-9616	NS-12016
Capacity Mild Steel	0.8mm x 1232mm (22GA x 48-1/2")	1.6mm x 1232mm (16GA x 48-1/2")	1.6mm x 1270mm (16GA x 50")	1.6mm x 1550mm (15GA x 61")	1.6mm x 1855mm (16GA x 72")	1.6mm x 2465mm (16GA x 96")	1.6mm x 3075mm (16GA x 120")
Max. Lift of Beam	22mm (7/8")	44mm (1-3/4")	44mm (1-3/4")	44mm (1-3/4")	44mm (1-3/4")	44mm (1-3/4")	44mm (1-3/4")
Beam Adjustment	8mm (5/16")	16mm (5/8")	16mm (5/8")	16mm (5/8")	NIL	NIL	NIL
Packing Size(mm)	1630x450x680	1630x550x750	1610x600x750	2000x650x820	2400x650x1000	3050x650x1050	3650x650x1100
Packing Weight	130kgs	190kgs	210kgs	250kgs	550kgs	775kgs	930kgs

All specifications & design are subject to change without prior price.

FINTEK INDUSTRY COMPANY LIMITED

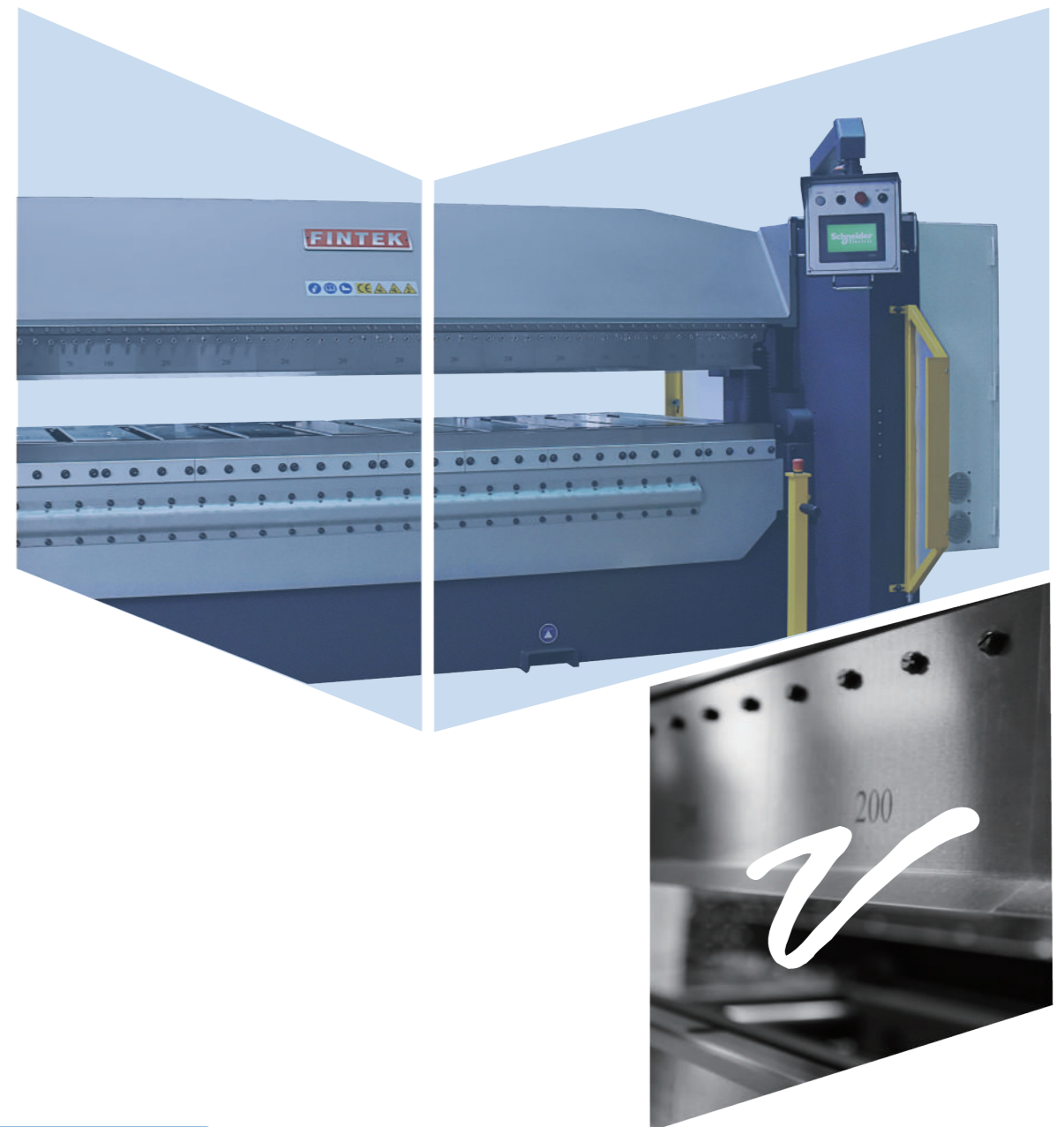
P.O.BOX 1481 TAIPEI, TAIWAN. TEL: +886-2-2523-6891

Email: fintek.tw@gmail.com FAX:+886-2-2523-5419



Folding

Sheet Metal Forming Solution



www.fintekwell.com



VHS



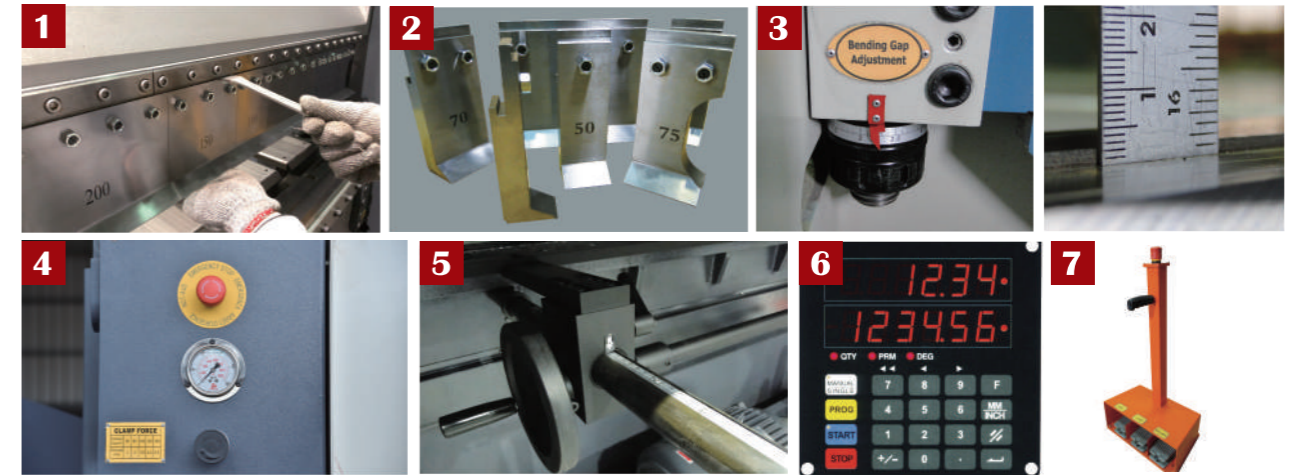
VHS-1035

(Optional Schneider 2-Axis NC Controller & CE Conformity)

HYDRAULIC UP & DOWN FOLDING MACHINE

MODEL	VHS-0635	VHS-0835	VHS-1035
Bending Length	2035 mm	2540 mm	3100 mm
Bending Capacity	Mild Steel	3.5 mm	3.5 mm
	Stainless Steel	2.5 mm	2.5 mm
Bending Angle	0 - 150°	0 - 150°	0 - 150°
Max. Open Height (Without Upper Blade Set)	300 mm	300 mm	300 mm
Box Height (Standard 4" Bending Tools)	100 mm(4")	100 mm(4")	100 mm(4")
Min Reverse Bend	35 mm	35 mm	35 mm
Motor	5 HP	7.5 HP	7.5 HP
Packing Dimension	3420 x 1500 x 1750 mm	3920 x 1750 x 1860 mm	4370 x 1770 x 1890 mm
Packing Weight	2540 kgs	3900 kgs	4520 kgs

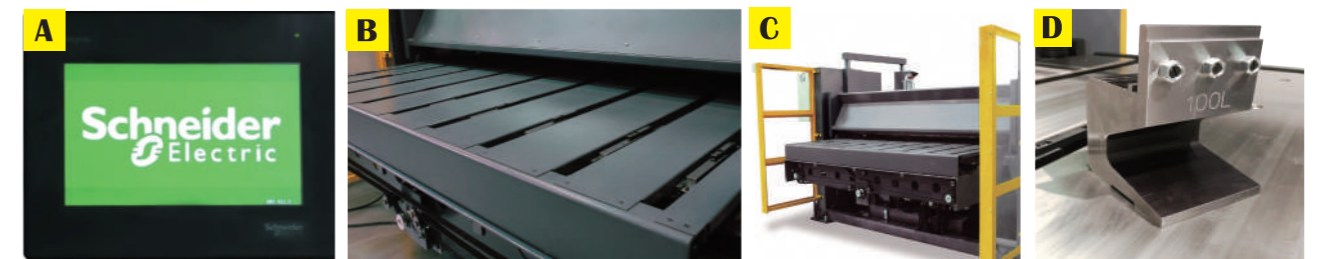
STANDARD ACCESSORIES



- 1 Quickly change tool holder device.
- 2 Segmented 100 mm(4") tools
- 3 Gap clearance manual adjustor.
- 4 Hydraulic pressure adjustor
- 5 Manual back gauge 600mm.
- 6 M15S NC angle controller.
- 7 Three functions foot pedal unit.
- 8 Standard insert bar width 30 mm

ACCESSORIES

OPTIONAL ACCESSORIES



- 2-Axis NC control system included :
 - A 1. 7" TOUCH screen controller.
 - B 2. 800 mm motorized back gauge
- C CE conformity.
- D Special tool shape / size / quantity.
- E Segmented bottom die
- F Custom insert bar on request

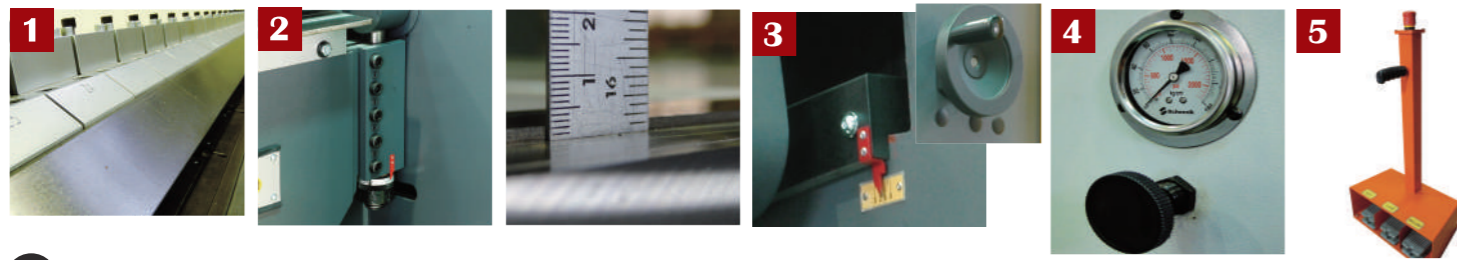
VH-HC



VH-1035-6HC
(Optional Schneider 2-Axis NC Controller & CE Conformity)

HYDRAULIC FOLDING MACHINE

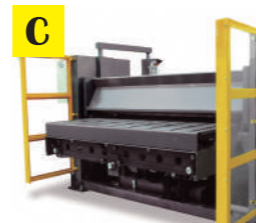
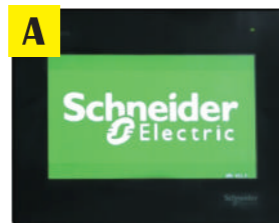
STANDARD ACCESSORIES



- 1** Standard segmented or straight upper blade. Standard segmented or straight upper blade.
- 2** Gap clearance manual adjustor.
- 3** Hold-down pressure adjusted by hand-wheel.
- 4** Hydraulic pressure adjustable at front side.
- 5** Three functions foot pedal.

OPTIONAL ACCESSORIES

- A** 2-Axis NC control system included :
 - 1. 7" TOUCH screen controller.
 - 2. 800 mm motorized back gauge
- B** Extended back gauge upto 1000 / 1250 mm.
- C** CE conformity.
- D** Radius fingers or customized shape



SEGMENTED TYPE

MODEL	VH-0625-6HC	VH-0635-6HC	VH-0645-6HC	VH-0665-6HC	VH-0825-6HC	VH-0835-6HC	VH-0845-6HC	VH-0865-6HC	VH-1025-6HC	
Bending Capacity	Bending Length	2035mm	2035mm	2035mm	2035mm	2540mm	2540mm	2540mm	2540mm	3100mm
	Mild Steel	2.5mm	3.5mm	4.5mm	6.5mm	2.5mm	3.5mm	4.5mm	6.5mm	2.5mm
	Stainless Steel	1.6mm	2.5mm	3.0mm	4.0mm	1.6mm	2.5mm	3.0mm	4.0mm	1.2mm
Bending Angle	0-135°	0-135°	0-135°	0-135°	0-135°	0-135°	0-135°	0-135°	0-135°	0-135°
Min Reverse Bend	15mm	25mm	30mm	35mm	15mm	25mm	30mm	35mm	15mm	
Motor (HP)	3	5	7.5	10	3	5	7.5	10	3	
Packing Size	3000x1100x1750	3000x1100x1750	3300x1550x1900	3300x1550x1900	3850x1700x1800	3850x1700x1860	3900x1700x1900	3900x1750x2050	4300x1770x1890	
Packing Weight	2100kgs	2450kgs	3200kgs	3710kgs	3400kgs	3900kgs	5100kgs	6200kgs	4000kgs	

MODEL	VH-1035-6HC	VH-1045-6HC	VH-1065-6HC	VH-1220-6HC	VH-1235-6HC	VH-1245-6HC	VH-4020-6HC	VH-4035-6HC	VH-4045-6HC	
Bending Capacity	Bending Length	3100mm	3100mm	3100mm	3710mm	3710mm	3710mm	4010mm	4010mm	4010mm
	Mild Steel	3.5mm	4.5mm	6.5mm	2.0mm	3.5mm	4.5mm	2.0mm	3.5mm	4.5mm
	Stainless Steel	2.5mm	3.0mm	4.0mm	1.2mm	2.5mm	3.0mm	1.2mm	2.5mm	3.0mm
Bending Angle	0-135°	0-135°	0-135°	0-135°	0-135°	0-135°	0-135°	0-135°	0-135°	
Min Reverse Bend	25mm	30mm	35mm	25mm	30mm	35mm	25mm	30mm	35mm	
Motor (HP)	5	7.5	10	3	5	7.5	3	5	7.5	
Packing Size	4300x1770x1890	4500x1750x1950	4500x1750x2050	5200x7750x1950	5200x1750x1950	5300x1750x2050	5600x1750x2050	5600x1800x2050	5600x1800x2150	
Packing Weight	4520kgs	5500kgs	7100kgs	5200kgs	5500kgs	7000kgs	5000kgs	6500kgs	8000kgs	

SPECIFICATION

STRAIGHT TYPE

MODEL	VH-0625-HC	VH-0635-HC	VH-0645-HC	VH-0665-HC	VH-0825-HC	VH-0835-HC	VH-0845-HC	VH-0865-HC	VH-1025-HC	
Bending Capacity	Bending Length	2035mm	2035mm	2035mm	2035mm	2540mm	2540mm	2540mm	2540mm	3100mm
	Mild Steel	2.5mm	3.5mm	4.5mm	6.5mm	2.5mm	3.5mm	4.5mm	6.5mm	2.5mm
	Stainless Steel	1.6mm	2.5mm	3.0mm	4.0mm	1.6mm	2.5mm	3.0mm	4.0mm	1.2mm
Bending Angle	0-135°	0-135°	0-135°	0-135°	0-135°	0-135°	0-135°	0-135°	0-135°	
Min Reverse Bend	15mm	25mm	30mm	35mm	15mm	25mm	30mm	35mm	15mm	
Motor (HP)	3	5	7.5	10	3	5	7.5	10	3	
Packing Size	3000x1100x1750	3000x1100x1750	3300x1550x1900	3300x1550x1900	3850x1700x1800	3850x1700x1860	3900x1700x1900	3900x1750x2050	4300x1770x1890	
Packing Weight	1950kgs	2200kgs	3050kgs	3550kgs	3200kgs	3700kgs	4900kgs	6000kgs	3700kgs	

MODEL	VH-1035-HC	VH-1045-HC	VH-1065-HC	VH-1220-HC	VH-1235-HC	VH-1245-HC	VH-4020-HC	VH-4035-HC	VH-4045-HC	
Bending Capacity	Bending Length	3100mm	3100mm	3100mm	3710mm	3710mm	3710mm	4010mm	4010mm	4010mm
	Mild Steel	3.5mm	4.5mm	6.5mm	2.0mm	3.5mm	4.5mm	2.0mm	3.5mm	4.5mm
	Stainless Steel	2.5mm	3.0mm	4.0mm	1.2mm	2.5mm	3.0mm	1.2mm	2.5mm	3.0mm
Bending Angle	0-135°	0-135°	0-135°	0-135°	0-135°	0-135°	0-135°	0-135°	0-135°	
Min Reverse Bend	25mm	30mm	35mm	25mm	30mm	35mm	25mm	30mm	35mm	
Motor (HP)	5	7.5	10	3	5	7.5	3	5	7.5	
Packing Size	4300x1770x1890	4500x1750x1950	4500x1750x2050	5200x7750x1950	5200x1750x1950	5300x1750x2050	5600x1750x2050	5600x1800x2050	5600x1800x2150	
Packing Weight	4220kgs	5200kgs	6800kgs	4850kgs	5150kgs	6650kgs	4600kgs	6100kgs	7600kgs	

All specifications & design are subject to change without prior price.

VH



VH-810-6

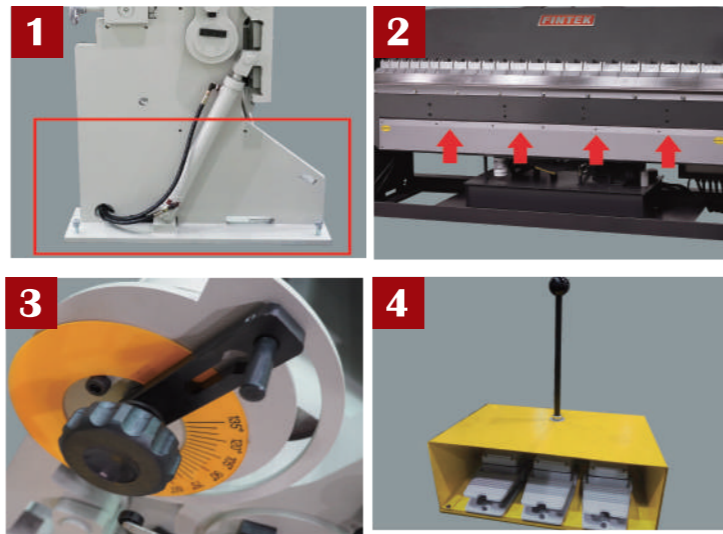


VH-812-6

HYDRAULIC BRAKE

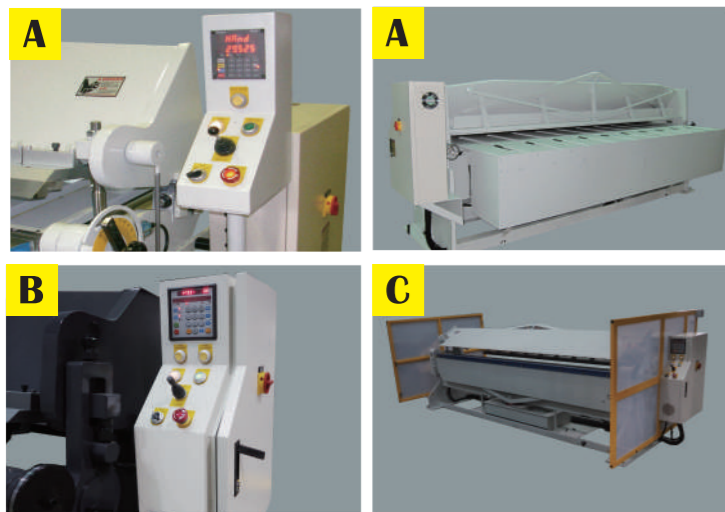
STANDARD ACCESSORIES

- 1 Rigid machine base design (for VH-810-6, VH-1010-6 only).
- 2 Adjustable table crowning design (for VH-810-6, VH-1010-6 only).
- 3 Bending angle adjustment setup
- 4 Three functions foot pedal.



OPTIONAL ACCESSORIES

- A 800mm (or 1250mm) NC back gauge with digital display unit and platform.
- B 2 axes NC included back gauge 800mm & angle setting.
- C CE conformity.
- D Metric specification machine on request.



BOX & PAN BRAKE

MODEL	VH-412-6	VH-410-6	VH-612-6	VH-610-6	VH-812-6	VH-810-6	VH-1014-6
Bending Capacity	Bending Length	1220mm(48")	1220mm(48")	1830mm(72")	1830mm(72")	2440mm(96")	3048mm(120")
	Mild Steel	2.5mm(12GA)	3.5mm(10GA)	2.5mm(12GA)	3.5mm(10GA)	2.5mm(12GA)	2.0mm(14GA)
	Stainless Steel	1.6mm(16GA)	2.5mm(12GA)	1.6mm(16GA)	2.5mm(12GA)	1.6mm(16GA)	1.2mm(18GA)
Bending Angle	0-135°	0-135°	0-135°	0-135°	0-135°	0-135°	0-135°
Beam Adjustment	25mm(1")	25mm(1")	25mm(1")	25mm(1")	25mm(1")	25mm(1")	25mm(1")
Min Reverse Bend	16mm(½")	25mm(1")	16mm(½")	25mm(1")	16mm(½")	25mm(1")	16mm(½")
Motor	2HP	3HP	3HP	5HP	3HP	5HP	3HP
Packing Size(mm)	2100x1160x1570	2200x1300x1680	2700x1050x1680	2800x1100x1750	3350x1050x1680	3500x1100x1750	3900x1050x1660
Packing Weight	1000kgs	1850kgs	1400kgs	2400kgs	1700kgs	3000kgs	2250kgs

MODEL	VH-1010-6	VH-1216-6	VH-1214-6	VH-1210-6	VH-4020-6	VH-4016-6	VH-4014-6
Bending Capacity	Bending Length	3048mm(120")	3710mm(145")	3710mm(145")	3710mm(145")	4010mm(157")	4010mm(157")
	Mild Steel	3.5mm(10GA)	1.6mm(16GA)	2.0mm(14GA)	3.5mm(10GA)	1.0mm(20GA)	1.6mm(16GA)
	Stainless Steel	2.5mm(12GA)	0.8mm(22GA)	1.2mm(18GA)	2.5mm(12GA)	0.6mm(24GA)	0.8mm(22GA)
Bending Angle	0-135°	0-135°	0-135°	0-135°	0-135°	0-135°	0-135°
Beam Adjustment	25mm(1")	25mm(1")	25mm(1")	25mm(1")	25mm(1")	25mm(1")	25mm(1")
Min Reverse Bend	25mm(1")	16mm(½")	16mm(½")	25mm(1")	16mm(½")	16mm(½")	16mm(½")
Motor	5 HP	3HP	5HP	5HP	3HP	3HP	5HP
Packing Size(mm)	4000x1100x1750	4600x1160x1700	4600x1160x1700	4600x1160x1700	5050x1100x1750	5050x1100x1750	5050x1100x1750
Packing Weight	2480kgs	2800kgs	3700kgs	4000kgs	4000kgs	4200kgs	4500kgs

SPECIFICATION

STRAIGHT BRAKE

MODEL	VH-412	VH-410	VH-612	VH-610	VH-812	VH-810	VH-1014
Bending Capacity	Bending Length	1220mm(48")	1220mm(48")	1830mm(72")	1830mm(72")	2440mm(96")	3048mm(120")
	Mild Steel	2.5mm(12GA)	3.5mm(10GA)	2.5mm(12GA)	3.5mm(10GA)	2.5mm(12GA)	2.0mm(14GA)
	Stainless Steel	1.6mm(16GA)	2.5mm(12GA)	1.6mm(16GA)	2.5mm(12GA)	1.6mm(16GA)	1.2mm(18GA)
Bending Angle	0-135°	0-135°	0-135°	0-135°	0-135°	0-135°	0-135°
Beam Adjustment	25mm(1")	25mm(1")	25mm(1")	25mm(1")	25mm(1")	25mm(1")	25mm(1")
Min Reverse Bend	16mm(½")	25mm(1")	16mm(½")	25mm(1")	16mm(½")	25mm(1")	16mm(½")
Motor	2HP	3HP	3HP	5HP	3HP	5HP	3HP
Packing Size(mm)	2100x1160x1570	2200x1300x1680	2700x1050x1680	2800x1100x1750	3350x1050x1680	3500x1100x1750	3900x1050x1660
Packing Weight	900kgs	1700kgs	1200kgs	2200kgs	1500kgs	2800kgs	2000kgs

MODEL	VH-1010	VH-1216	VH-1214	VH-1210	VH-4020	VH-4016	VH-4014
Bending Capacity	Bending Length	3048mm(120")	3710mm(145")	3710mm(145")	3710mm(145")	4010mm(157")	4010mm(157")
	Mild Steel	3.5mm(10GA)	1.6mm(16GA)	2.0mm(14GA)	3.5mm(10GA)	1.0mm(20GA)	1.6mm(16GA)
	Stainless Steel	2.5mm(12GA)	0.8mm(22GA)	1.2mm(18GA)	2.5mm(12GA)	0.6mm(24GA)	0.8mm(22GA)
Bending Angle	0-135°	0-135°	0-135°	0-135°	0-135°	0-135°	0-135°
Beam Adjustment	25mm(1")	25mm(1")	25mm(1")	25mm(1")	25mm(1")	25mm(1")	25mm(1")
Min Reverse Bend	25mm(1")	16mm(½")	16mm(½")	25mm(1")	16mm(½")	16mm(½")	16mm(½")
Motor	5HP	3HP	5HP	5HP	3HP	3HP	5HP
Packing Size(mm)	4000x1100x1750	4600x1160x1700	4600x1160x1700	4600x1160x1700	5050x1100x1750	5050x1100x1750	5050x1100x1750
Packing Weight	3150kgs	2600kgs	2800kgs	3700kgs	3700kgs	3900kgs	4200kgs

All specifications & design are subject to change without prior price.

V



V-812-6



V-412-6

FLOOR TYPE MANUAL BRAKE



V-816



V-1016

BOX & PAN HAND BRAKE

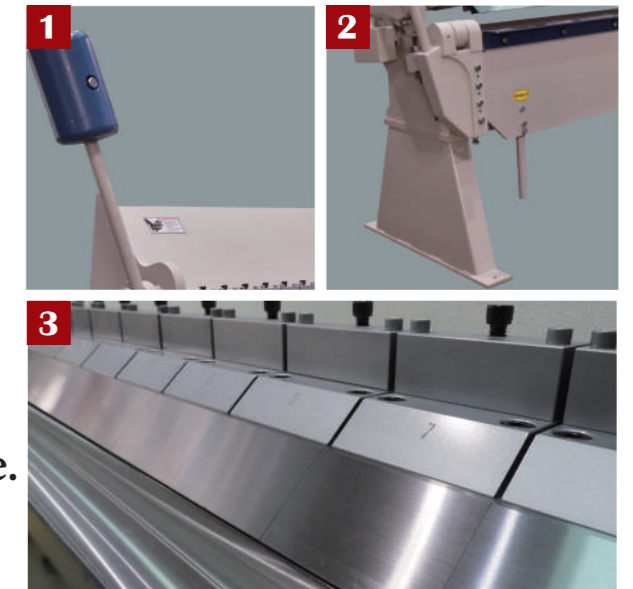
MODEL	V-412-6	V-612-6	V-812-6	V-816-6	V-1014-6	V-1016-6	V-1218-6	V-4022-6	
Bending Capacity	Bending Length	1220mm(48")	1830mm(72")	2440mm(96")	2440mm(96")	3048mm(120")	3048mm(120")	3700mm(145")	4000mm(157")
	Mild Steel	2.5mm(12GA)	2.5mm(12GA)	2.5mm(12GA)	1.6mm(16GA)	2.0mm(14GA)	1.6mm(16GA)	1.2mm(18GA)	0.8mm(22GA)
	Stainless Steel	1.6mm(16GA)	1.6mm(16GA)	1.6mm(16GA)	1.0mm(20GA)	1.2mm(18GA)	1.0mm(20GA)	0.8mm(22GA)	0.6mm(24GA)
Bending Angle	0-135°	0-135°	0-135°	0-135°	0-135°	0-135°	0-135°	0-135°	
Beam Adjustment	25mm(1")	25mm(1")	25mm(1")	25mm(1")	25mm(1")	25mm(1")	25mm(1")	25mm(1")	
Min Reverse Bend	16mm(5/8")	16mm(5/8")	16mm(5/8")	16mm(5/8")	16mm(5/8")	16mm(5/8")	16mm(5/8")	16mm(5/8")	
Packing Size(mm)	1800x850x1100	2450x850x1100	3120x850x1150	3120x850x1100	3700x850x1100	3700x850x1150	4250x850x1200	4700x900x1200	
Packing Weight	900kgs	1100kgs	1460kgs	1150kgs	1550kgs	1450kgs	2450kgs	2700kgs	

All specifications & design are subject to change without prior price.

SPECIFICATION

STANDARD ACCESSORIES

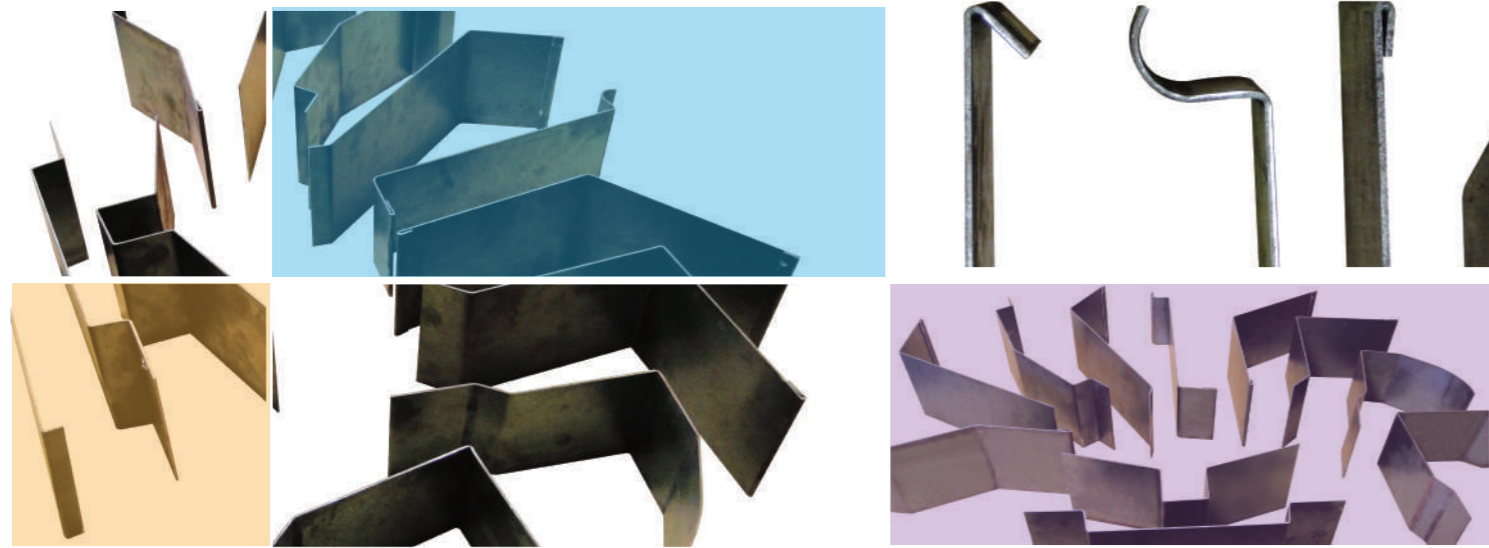
- 1 Two Pieces Counter Weight.
- 2 Rigid floor stand structure
- 3 Segmented or straight upper blade.



STRAIGHT HAND BRAKE

MODEL	V-412	V-612	V-812	V-816	V-1014	V-1016	V-1218	V-4022	
Bending Capacity	Bending Length	1232mm(48-1/2")	1855mm(73")	2465mm(97")	2465mm(97")	3075mm(121")	3075mm(121")	3700mm(145")	4000mm(157")
	Mild Steel	2.5mm(12GA)	2.5mm(12GA)	2.5mm(12GA)	1.6mm(16GA)	2.0mm(14GA)	1.6mm(16GA)	1.2mm(18GA)	0.8mm(22GA)
	Stainless Steel	1.6mm(16GA)	1.6mm(16GA)	1.6mm(16GA)	1.0mm(20GA)	1.2mm(18GA)	1.0mm(20GA)	0.8mm(22GA)	0.6mm(24GA)
Bending Angle	0-135°	0-135°	0-135°	0-135°	0-135°	0-135°	0-135°	0-135°	
Beam Adjustment	25mm(1")	25mm(1")	25mm(1")	25mm(1")	25mm(1")	25mm(1")	25mm(1")	25mm(1")	
Min Reverse Bend	16mm(5/8")	16mm(5/8")	16mm(5/8")	16mm(5/8")	16mm(5/8")	16mm(5/8")	16mm(5/8")	16mm(5/8")	
Packing Size(mm)	1800x850x1000	2450x850x1000	3120x850x1000	3120x850x1000	3700x850x1000	3700x850x1000	4250x850x1200	4700x900x1200	
Packing Weight	600kgs	750kgs	1200kgs	750kgs	1500kgs	1300kgs	1800kgs	2200kgs	

All specifications & design are subject to change without prior price.



STANDARD FINGERS WIDTH, AND NUMERS (UP/DOWN FOLDER)

MODEL	200mm	180mm	150mm	100mm	70mm	65mm	60mm	55mm	50mm	40mm	35mm	30mm	R75mm	Total Length/QTY
VHS-06	5	1	1	1	1	1	1	1	2	1	1	1	2	2035mm / 19
VHS-08	7	1	1	2	1	1	1	2	1	1	1	1	2	2540mm / 22
VHS-10	10	1	1	1	1	2	1	1	2	1	1	1	2	3100mm / 25

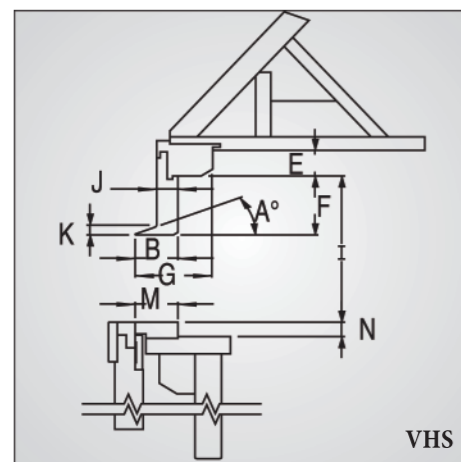
(HYDRAULIC FOLDER)

MODEL	VH-06HC	VH-08HC	VH-10HC	VH-12HC	VH-40HC
75mm	6	6	6	6	6
100mm	3	4	5	5	5
125mm	8	10	10	10	10
150mm	2	3	6	10	12
Total quantity	19	23	27	31	33
Total length	2050mm	2550mm	3100mm	3700mm	4000mm

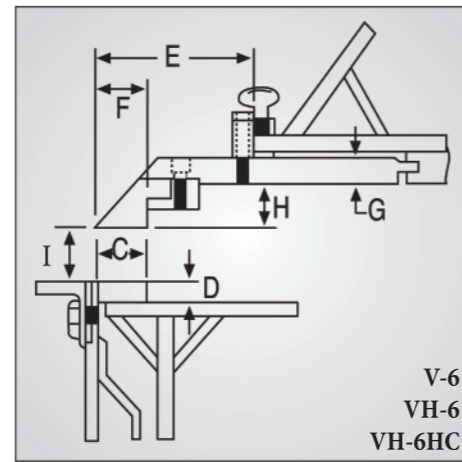
(HYDRAULIC / MANUAL BOX & PAN BRAKE)

MODEL	V-4 / VH-4	V-6 / VH-6	V-8 / VH-8	V-10 / VH-10	V-12 / VH-12	V-40 / VH-40
76mm/3"	3	6	6	6	6	6
102mm/4"	2	3	4	4	6	6
127mm/5"	5	6	10	10	10	10
152mm/6"	1	2	2	6	9	11
Total quantity	11	17	22	26	31	33
Total length	1219mm/4'	1828mm/6'	2438mm/8'	3046mm/10'	3706mm/4'	4010mm/13'

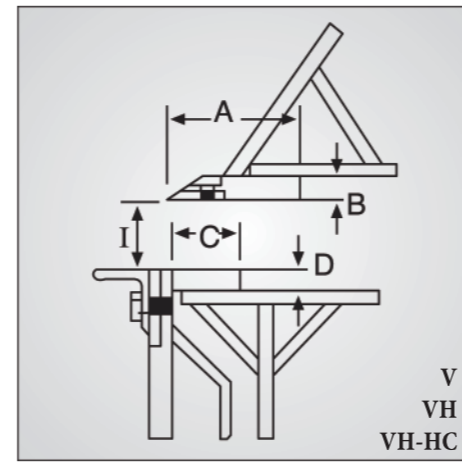
· The Above specifications subject to change without prior notice.



Up/Down Box & Pan Brake



Manual Box & Pam Brake
Hydraulic Box & Pan Brake



Manual Straight Brake
Hydraulic Straight Brake

OVERLOOK

DIMENSIONS

MODEL	V-412	V-812	V-816	V-1218	V-412-6	V-616-6	V-812-6	V-1016-6	VH-412	VH-1216	VH-410	VH-1010	VH-412-6	VH-1216-6	VH-410-6	VH-0525HC	VH-0525-6HC	VH-0525HC	VH-0635HC	VH-0835HC	VH-1035HC	VH-1235HC	VH-4035HC	VH-0535-6HC	VH-0635-6HC	VH-0835-6HC	VH-1035-6HC	VH-1235-6HC	VH-4035-6HC	VHS-0635
A	100	100	100	100					138	138					100			138	138	138	138	138	138							30
B	30	30	30	30					34	34					30			34	34	34	34	34	34							48
C	50	50	50	50	50	50	50	50	50	50			50	50	50			50	50	50	50	50	50	50	50	50	50	50	50	50
D	23	23	23	23	23	23	23	23	23	23			23	23	23			23	23	23	23	23	23	23	23	23	23	23	23	23
E					150	150	150	150					150	150				150	150	150	150	150	150	150	150	150	150	150	150	47
F					50	50	50	50					50	73				73	73	73	73	73	73	73	73	73	73	73	73	100
G					30	20	30	25					30	30				36.5	36.5	36.5	36.5	36.5	36.5	36.5	36.5	36.5	36.5	36.5	36.5	86
H					33	33	33	33					48	33				48	48	48	48	48	48	48	48	48	48	48	48	48
I	40	53	53	53	40	40	53	53	100	70			100	70	100			100	100	100	100	100	100	100	100	100	100	100	100	300
J																														24
K																														18
M																														48
N																														25

· The Above specifications subject to change without prior notice.