



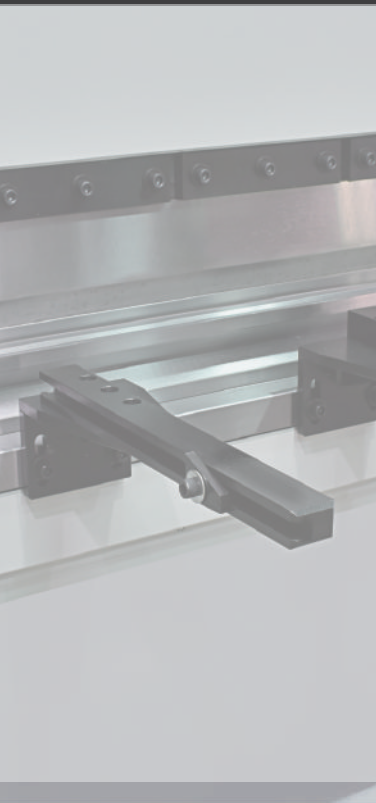
# Press Brake

Sheet Metal Forming Solution



[www.fintekwell.com](http://www.fintekwell.com)

**30 - 45 TON**



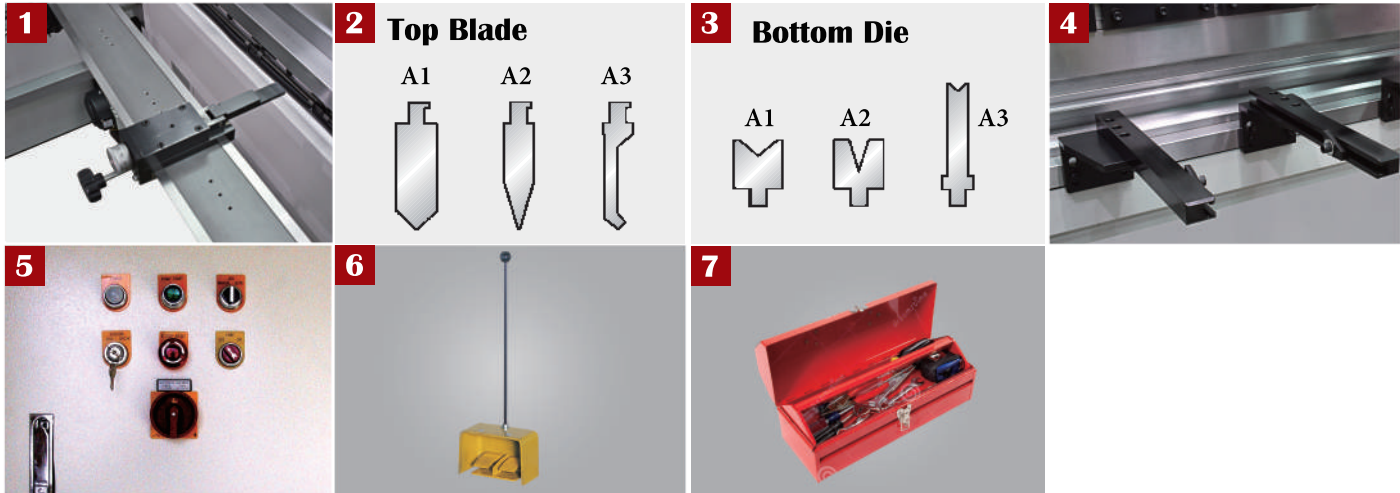
**PB-4515NC**

**HYDRAULIC PRESS BRAKE**

MODEL	PB-3012	PB-3015	PB-3020	PB-4515
Bending Length Capacity	1270 mm	1550 mm	2000 mm	1550 mm
Maximum Pressure	30 Ton	30 Ton	30 Ton	45 Ton
Bending Thickness	2.5mm	2.0mm	1.5mm	3.0mm
Distance Between Housings	970mm	1250mm	1550mm	1250mm
Ram Stroke	150 mm	150 mm	150 mm	150 mm
Table Width	Bottom Die Holder	Bottom Die Holder	Bottom Die Holder	Bottom Die Holder
Distance between Table/Ram surface	250 mm	250 mm	250 mm	250 mm
Oil Tank	20 Gallon	24 Gallon	24 Gallon	28 Gallon
Main Motor	3 HP	3 HP	3 HP	5 HP
Approach Speed	80 mm/sec.	80 mm/sec.	80 mm/sec.	80 mm/sec.
Bending Speed	7 mm/sec.	7 mm/sec.	7 mm/sec.	7 mm/sec.
Return Speed	60 mm/sec.	60 mm/sec.	60 mm/sec.	60 mm/sec.
Power Back Gauge	600mm	600mm	600mm	600mm
Back Gauge Motor	1/2 HP	1/2 HP	1/2 HP	1/2 HP
Throat Depth	200mm	200mm	200mm	200mm
Gross Weight	1200 kgs	1500 kgs	2400 kgs	2800 kgs
Packing Size	1400 x 1200 x 2050 mm	1700 x 1200 x 2050 mm	2300 x 1200 x 2050 mm	1900 x 1300 x 2200 mm

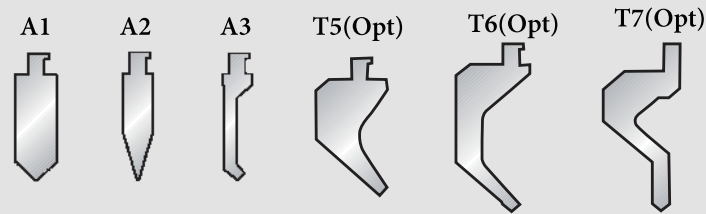
· All specifications & design are subject to change without prior notice.

## STANDARD ACCESSORIES

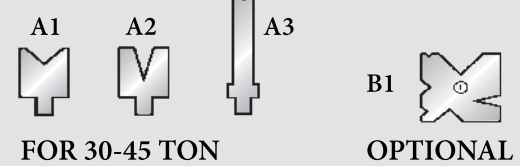


### A WIDE VARIETY OF STANDARD TOOLING

#### Top Blade



#### Bottom Die



- 1** Manual back gauge micro adjustor.
- 2** One top blade. (see standard tooling chart A1-3)
- 3** One bottom blade. (see standard tooling chart A1-3)
- 4** Front supporting arm.
- 5** Control panel with low voltage switches / buttons.
- 6** Foot switch w / safety protection housing.
- 7** Tool box w / maintenance tools and leveling pads.

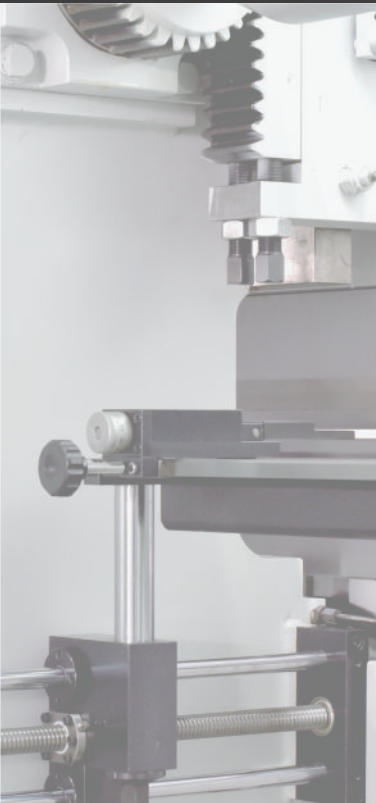
## ACCESSORIES for 30-45 ton

## OPTIONAL ACCESSORIES



- A** Power bending angle setting device. (Optional for PB-3012/3015/3020/4515)
- B** Power ballscrew back gauge w/counter display and frontal control.
- C** 2 Axes (Depth & Length Axis) NC control system.
- D** Bottom-die/table hydraulic crowning auto compensation.
- E** 4-face bottom die for PB-3012/3015/3020/4515 (Multi-size v-slot design).
- F** Safety sensor protection system.
- G** Deeper throat.
- H** Special blade and die.
- I** Power grease injecting system.

## 60 - 80 TON



**PB-6032NC**

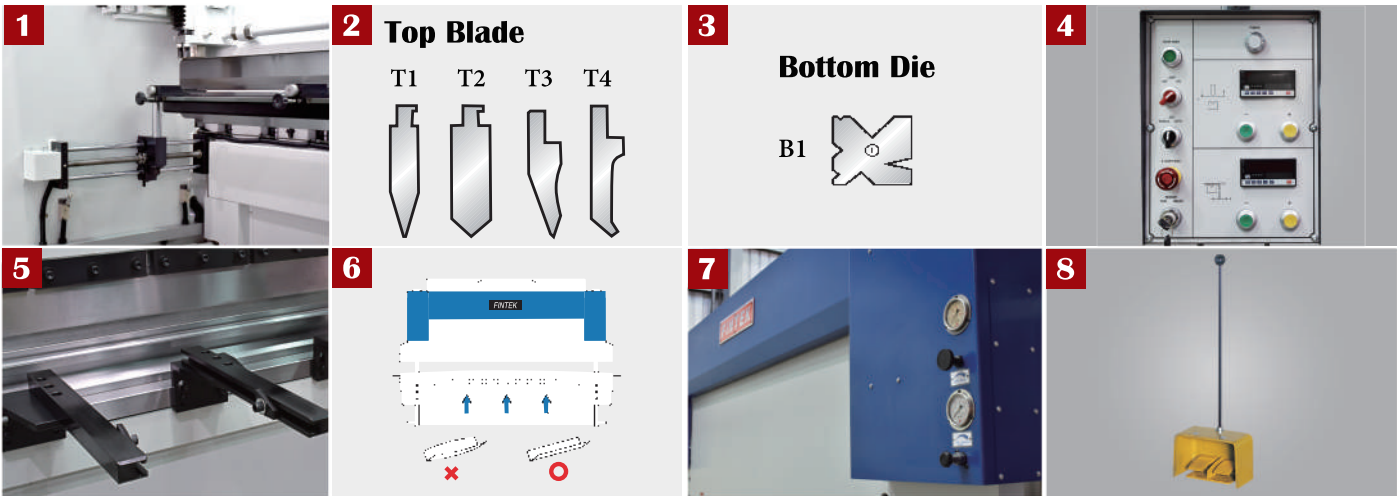
## HYDRAULIC PRESS BRAKE

MODEL	PB-6020	PB-6026	PB-6032	PB-8020	PB-8026	PB-8026
Bending Length Capacity	2000 mm	2600 mm	3200 mm	2000 mm	2600 mm	3200 mm
Maximum Pressure	60 Ton	60 Ton	60 Ton	80 Ton	80 Ton	80 Ton
Bending Thickness	4.0mm	3.2mm	2.5mm	5.0mm	4.0mm	3.2mm
Distance Between Housings	1550mm	2100mm	2600mm	1550mm	2100mm	2600mm
Ram Stroke	150 mm	150 mm	150 mm	150 mm	150 mm	150 mm
Table Width	160 mm	160 mm	160 mm	160 mm	160 mm	160 mm
Distance between Table/Ram surface	300 mm	300 mm	300 mm	300 mm	300 mm	300 mm
Oil Tank	35 Gallon	35 Gallon	35 Gallon	35 Gallon	35 Gallon	35 Gallon
Main Motor	7.5 HP	7.5 HP	7.5 HP	10 HP	10 HP	10 HP
Approach Speed	80 mm/sec.	80 mm/sec.	80 mm/sec.	80 mm/sec.	80 mm/sec.	80 mm/sec.
Bending Speed	7 mm/sec.	7 mm/sec.	7 mm/sec.	6 mm/sec.	6 mm/sec.	6 mm/sec.
Return Speed	60 mm/sec.	60 mm/sec.	60 mm/sec.	60 mm/sec.	60 mm/sec.	60 mm/sec.
Power Back Gauge	600mm	600mm	600mm	600mm	600mm	600mm
Back Gauge Motor	1/2 HP	1/2 HP	1/2 HP	1/2 HP	1/2 HP	1/2 HP
Throat Depth	200mm	200mm	200mm	200mm	200mm	200mm
Gross Weight	3500 kgs	4000 kgs	4500 kgs	4000 kgs	5000 kgs	5600 kgs
Packing Size	2300 x 1550 x 2400 mm	2900 x 1550 x 2430 mm	3500 x 1550 x 2450 mm	2400 x 1600 x 2400 mm	3000 x 1600 x 2430 mm	3600 x 1600 x 2450 mm

· All specifications & design are subject to change without prior notice.

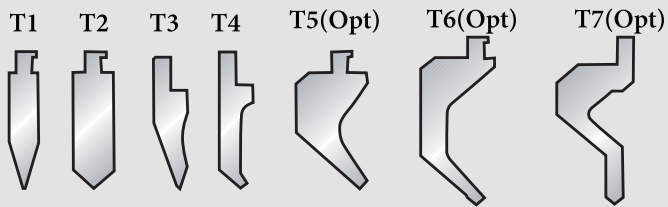


## STANDARD ACCESSORIES



### A WIDE VARIETY OF STANDARD TOOLING

#### Top Blade



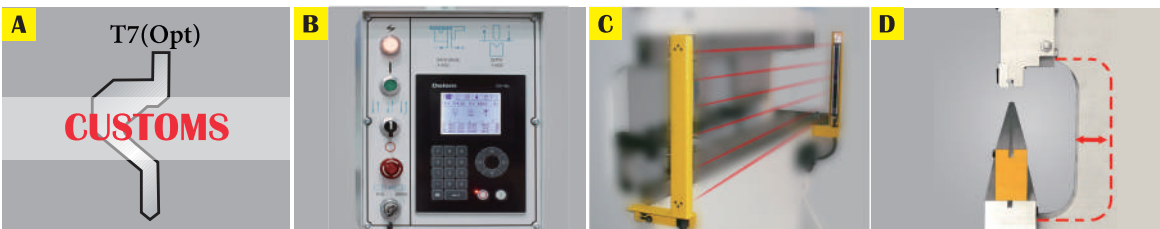
#### Bottom Die



- ① Power ballscrew back gauge w/counter display and frontal control.
- ② One top blade.(see standard tooling chart)
- ③ One bottom die.(see standard tooling chart)
- ④ Powered bending angle setting device.
- ⑤ Front support arm.
- ⑥ Bottom-die/ table hydraulic crowning auto compensation.
- ⑦ Main bending forces and table crowning forces easy adjusted at front.
- ⑧ Foot switch w/safety protection housing.
- ⑨ Tool box w/maintenance tools and leveling pads.

## ACCESSORIES for 60-80 ton

## OPTIONAL ACCESSORIES



- Ⓐ Customized top blade.
- Ⓑ 2 axes (depth & length axis) NC control system.
- Ⓒ Safety sensor protection system.
- Ⓓ Deeper throat.
- Ⓔ Special blade and die.
- Ⓕ Power grease injecting system.

# 110 - 220 TON



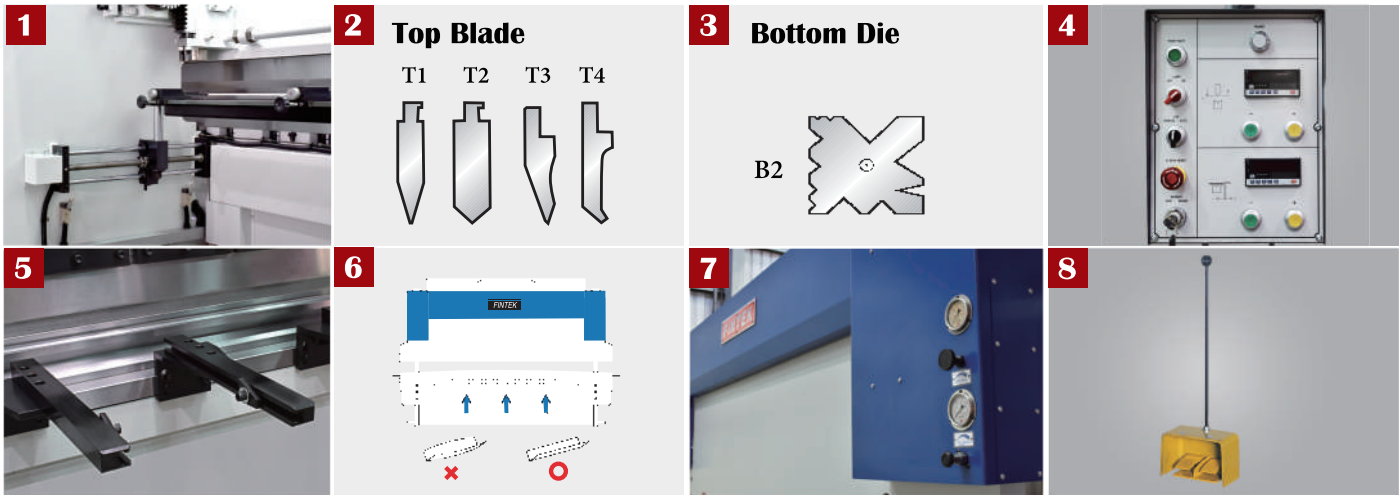
**PB-22040**

## HYDRAULIC PRESS BRAKE

MODEL	PB-11026	PB-11032	PB-11040	PB-16026	PB-16032	PB-16040	PB-22026	PB-22032	PB-22040
Bending Length Capacity	2600 mm	3200 mm	4000 mm	2000 mm	3200 mm	4000 mm	2600 mm	3200 mm	4000 mm
Maximum Pressure	110 Ton	110 Ton	110 Ton	160 Ton	160 Ton	160 Ton	220 Ton	220 Ton	220 Ton
Bending Thickness	4.5mm	3.5mm	2.5mm	6.5mm	5.0mm	4.3mm	9.0mm	8.0mm	6.5mm
Distance Between Housings	2100mm	2600mm	3400mm	2100mm	2550mm	3350mm	2100mm	2500mm	3300mm
Ram Stroke	200 mm	200 mm	200 mm	200 mm	200 mm	200 mm	200 mm	200 mm	200 mm
Table Width	200 mm	200 mm	200 mm	200 mm	200 mm	200 mm	200 mm	200 mm	200 mm
Distance between Table/Ram surface	350 mm	350 mm	350 mm	400 mm	400 mm	400 mm	400 mm	400 mm	400 mm
Oil Tank	55 Gallon	55 Gallon	55 Gallon	80 Gallon	80 Gallon	80 Gallon	100 Gallon	100 Gallon	100 Gallon
Main Motor	10 HP	10 HP	10 HP	15 HP	15 HP	15 HP	20 HP	20 HP	20 HP
Approach Speed	80 mm/sec.	80 mm/sec.	80 mm/sec.	80 mm/sec.	80 mm/sec.	80 mm/sec.	80 mm/sec.	80 mm/sec.	80 mm/sec.
Bending Speed	6 mm/sec.	6 mm/sec.	6 mm/sec.	6 mm/sec.	6 mm/sec.	6 mm/sec.	6 mm/sec.	6 mm/sec.	6 mm/sec.
Return Speed	60 mm/sec.	60 mm/sec.	60 mm/sec.	60 mm/sec.	60 mm/sec.	60 mm/sec.	60 mm/sec.	60 mm/sec.	60 mm/sec.
Power Back Gauge	600mm	600mm	600mm	600mm	600mm	600mm	600mm	600mm	600mm
Back Gauge Motor	1/2 HP	1/2 HP	1/2 HP	1/2 HP	1/2 HP	1/2 HP	1/2 HP	1/2 HP	1/2 HP
Throat Depth	250mm	250mm	250mm	250mm	250mm	250mm	250mm	250mm	250mm
Gross Weight	6200 kgs	7000 kgs	9000 kgs	8000 kgs	10000 kgs	13000 kgs	11000 kgs	12000 kgs	15000 kgs
Packing Size	3050 x 1650 x 2500 mm	3650 x 1650 x 2550 mm	4450 x 1800 x 2600 mm	3050 x 1800 x 2650 mm	3650 x 1800 x 2700 mm	4500 x 1800 x 2800 mm	3100 x 1950 x 2900 mm	3700 x 2000 x 2950 mm	4500 x 1800 x 3200 mm

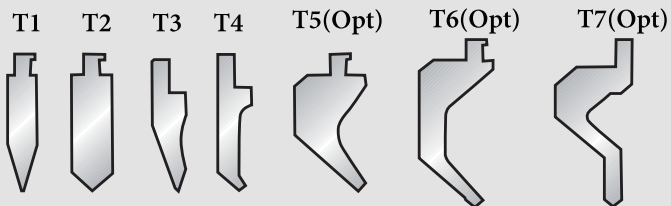
· All specifications & design are subject to change without prior notice.

## STANDARD ACCESSORIES



### A WIDE VARIETY OF STANDARD TOOLING

#### Top Blade



#### Bottom Die

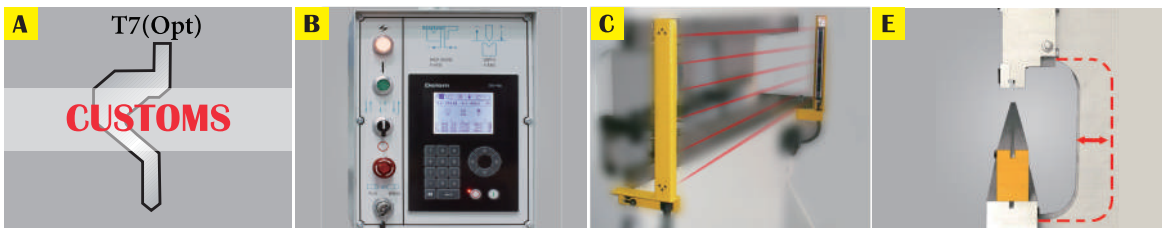


FOR 110-220 TON

- |  |   |
|--|---|
| <ul style="list-style-type: none"> <li>1 Power ballscrew back gauge w/counter display and frontal control</li> <li>2 One top blade. (see standard tooling chart)</li> <li>3 One bottom die. (see standard tooling chart)</li> <li>4 Powered bending angle setting device.</li> <li>5 Front support arm.</li> </ul> | <ul style="list-style-type: none"> <li>6 Bottom-die / table hydraulic crowning auto compensation.</li> <li>7 Main bending forces and table crowning forces easy adjusted at front.</li> <li>8 Foot switch w/ safety protection housing.</li> <li>9 Tool box w / maintenance tools and leveling pads.</li> </ul> |
|--|---|

## ACCESSORIES for 110-220 ton

## OPTIONAL ACCESSORIES



- |  |  |
|--|--|
| <ul style="list-style-type: none"> <li>A Customized top blade.</li> <li>B 2 axes (depth &amp; length axis) NC control system.</li> <li>C Safety sensor protection system.</li> </ul> | <ul style="list-style-type: none"> <li>D Deeper throat.</li> <li>E Special blade and die.</li> <li>F Power grease injecting system.</li> </ul> |
|--|--|

## HYDRAULIC PRESS BRAKE FEATURE

### 1. OVERSIZED HYDRAULIC OIL TANK, HIGH PERFORMANCE PUMP

The big tank capacity and high performance pump increases oil flow smoothness and better oil cooling efficiency.

### 3. RIGID CONSTRUCTION

The entire machine frame is manufactured from high-tension steel plates, which has longer using years.

### 5. ACCURATE DEPTH OF BENDING

High accuracy depth positioning is controlled by mechanical stops inside cylinder, assuring accurate angle of bending at all times.

### 2. BLADE

One piece top blade.

One piece 4-face bottom die. (multi-size v-slot)

### 4. DEPENDABLE HYDRAULIC SYSTEM

High quality solenoid valves and two powerful cylinders, featuring powerful force output and stable motions.

Two-step downward speed design, which greatly shortens operating time.



### 6. HIGH ACCURACY NC CONTROLLER

Two axes NC controller (Opt.), Automatic bending and back gauge with programable function, more accuracy and efficiency.

### 7. POWER BACK GAUGE

The motorized back gauge is transmitted by high precision ball screw, tolerance is within  $\pm 0.1$  mm.

