

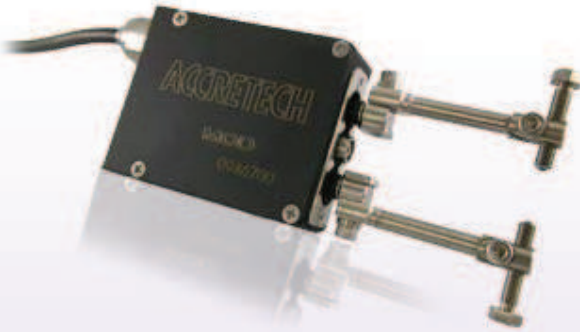
MODgage

線上量測外徑量測頭

In process Measuring head dedicated for Outer Diameter

組合圖/Configurations

- ▶ DELCOM 100
- ▶ DELCOM 300
- ▶ DELCOM 400
- ▶ PULCOM V4
- ▶ PULCOM V6
- ▶ PULCOM V7
- ▶ PULCOM V8
- ▶ PULCOM V10A



外徑專用機型 / For Outer diameter

MOD 是一款非常容易操作用來量測外徑的儀器
同樣他的耐久性也非常高，可以用在惡劣的加工環境

MOD can be used easily with simple structure that specializes in outer diameter measurement.

Also, since it has excellent durability, making it ideal for harsh environments.

高精度 / High precision

重複精度: $\leq 0.2 \mu\text{m} / 4 \sigma$

Repeatability: $\leq 0.2 \mu\text{m} / 4 \sigma$

可以抵抗溫度變化 / Resistant to temperature change

在量測啟動或結束時面臨溫度變化都可以維持原有的精度

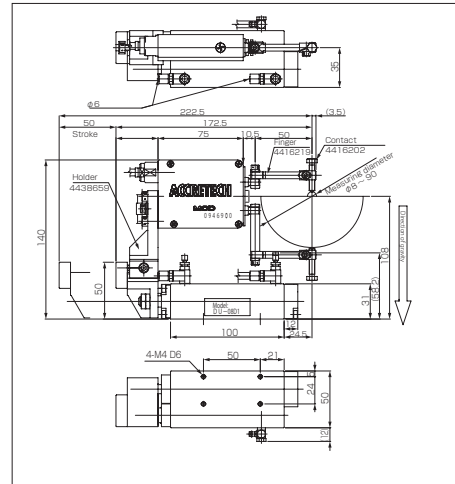
A stable precision is maintained even when starting up after a break or under a factory environment where the temperature changes.

節省空間 / Space-saving

總體積長度高度，比 Σ gage 縮小了 30%

The miniaturization of the length, the height of the body, and about 30% was achieved compared with the Σ gage.

應用 / Application

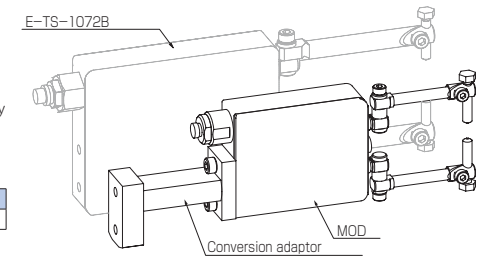


Product name	Product code	Model	Specifications
Measuring heads	0946900	MOD	P3
Finger	4416219	A071453-1006	L=50
Contact	4416202	A262126	SR1.5 DIA
Holder	4438659	651921-0003	
Air drive unit	0970450	ADU-S05L	

跟舊有的款式可以相容 / Compatible with conventional equipment

■ LVDT 可以被 PULCOM Σ (E-DT-1072B) 取代
For small measuring head with LVDT, it can be replaced with any PULCOM Σ (E-DT-1072B).

Conversion adaptor	Product code
Σ (E-TS-1072B) \leftrightarrow MOD	4304024



樣式圖 / Specifications

Model	MOD	
Product code	0946900	0946901
Measuring range	$\sim \phi 90$ (Less than 8 is make to order)	
Repeatability	$\leq 0.2 \mu\text{m} / 4 \sigma$	
Linear Range	-200 μm \sim +500 μm	
Linearity	0.1 \sim 0.5% F.S.	
Pre travel (one side)	0.24 0.28 mm	
Measuring force	1.5 \pm 0.15 N	
Waterproof standard	IP67 compliant	
Number of output	1	
Diameters and Length of a Cable	$\phi 6 \times 3 \text{ m}$	$\phi 6 \times 6 \text{ m}$
Head weight	Approx. 0.6 kg (Excluding Cable, Finger and Contact)	

外觀圖 / Outer Appearance/Dimension Diagram

