

# TIMI

## TELECENTRIC IMAGE MEASUREMENT INSTRUMENT

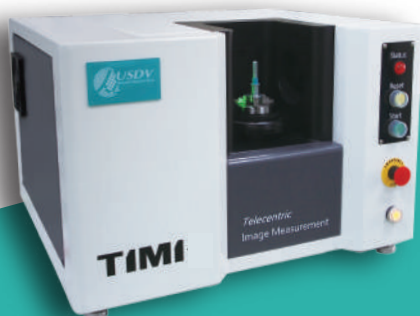
**Large field-of-view measurement with micron-level precision.**

**The upright shaft can be measured in 360° rotation, particularly for the measurement of geometric tolerance.**

**User-friendly interface and SM (Select-to-Measure) method makes measurement easy to get started.**

**Configure a measurement script and press a button to measure all the dimensions of the object.**

**Real-time monitor in-process QC with fast, dense and accurate measurement.**



# Select-to-Measure Shaft Size

## Basic Measurement

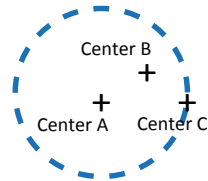
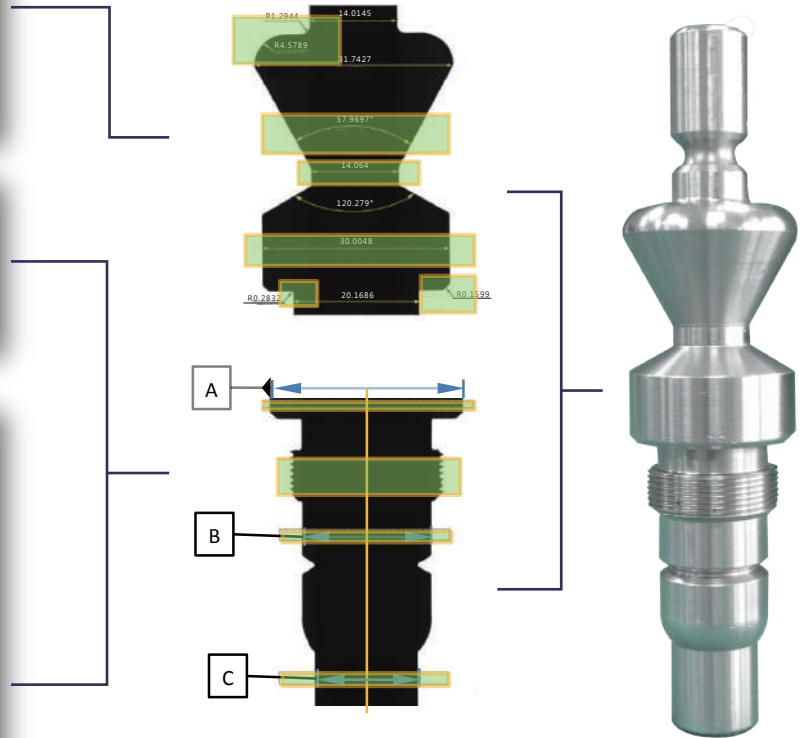
Arc radius · Diameter · Length · Angle · Chamfer

## Mechanical Thread

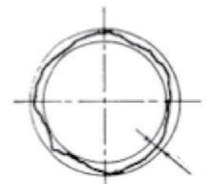
O.D. · I.D. · P.D. · Pitch · Thread Angle · Helix Angle

## Geometric Measurement

- **Position tolerance**  
Concentricity
- **Form tolerance**  
Straightness · Roundness · Cylindricity
- **Directional tolerance**  
Parallelism · Verticality · Slope
- **Runout tolerance**  
Runout

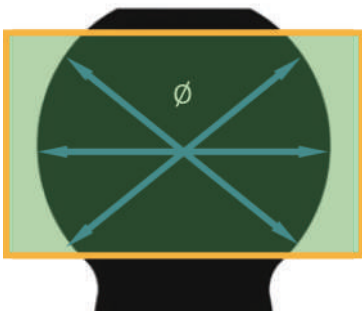


Center position of concentricity

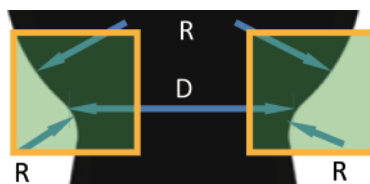


Diameter change of roundness

## Multiple R-Measurement



Tri-directional Diameter

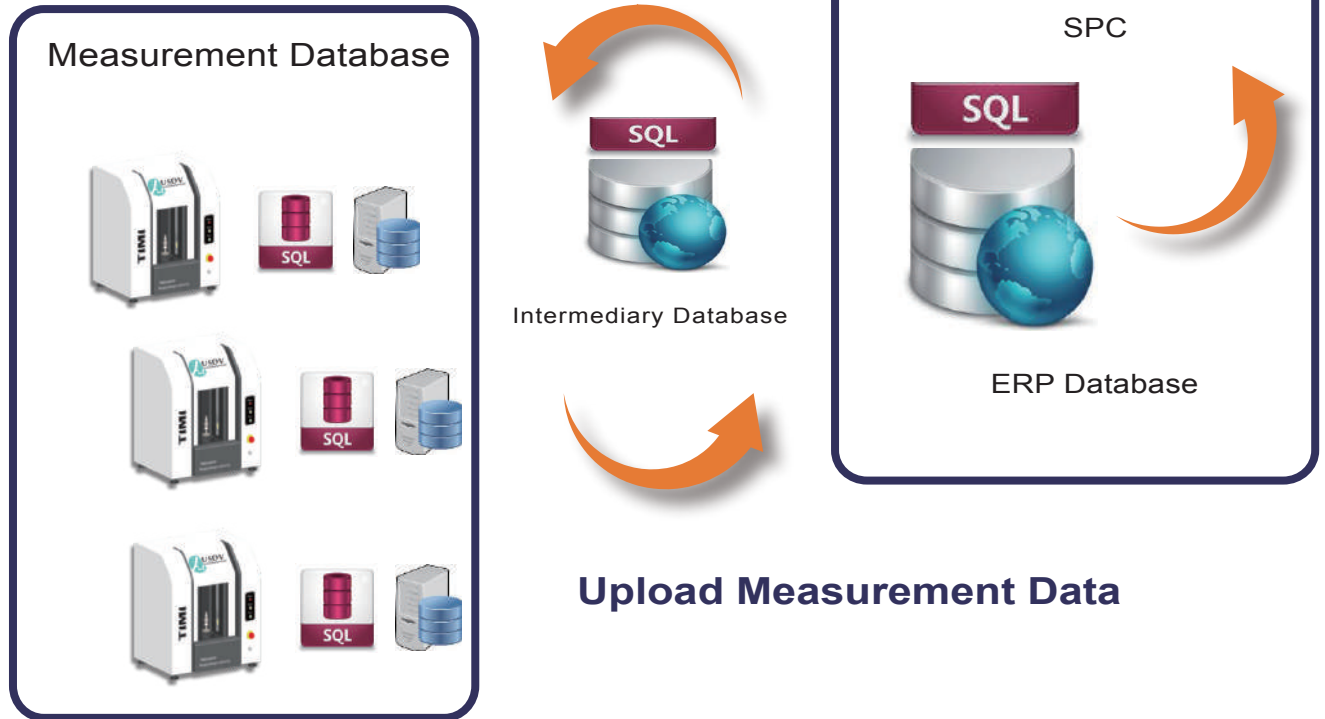


Two Rs & one transfer point



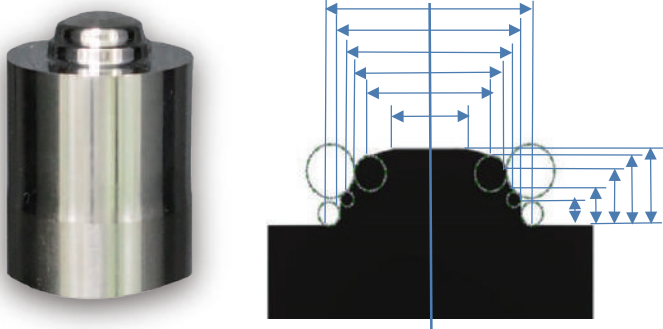
R between two lines & two transfer points

## Download Production Information

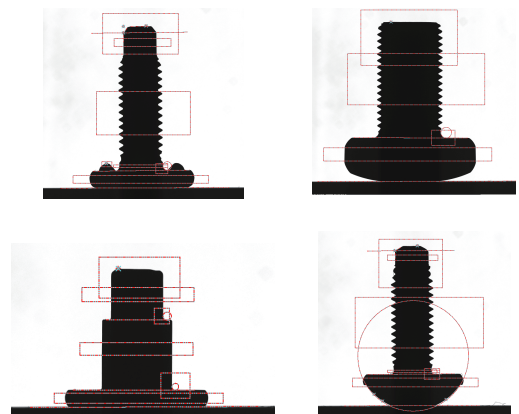


## Cases of Automatic Measurement

### Punch Measurement



### Fastener Measurement



## Product Specification

Type	Precision		Auto/Semi-auto		Flash	
Model	TIMI90P	TIMI34P	TIMI34RZ/Z	TIMI16RZ/Z	TIMI45RF	TIMI45F
Field of View	90mm*28mm	34mm*28mm	34mm*28mm	16mm*13mm	45mm*37mm	45mm*37mm
Measuring Length	≥300mm	≥300mm	300mm	150mm	--	--
Image Resolution	14μm	14μm	14μm	7μm	19μm	19μm
Repetition Accuracy	±0.3μm	±0.2μm	±0.3μm	±0.2μm	±0.5μm	±0.5μm
Precision	±3μm	±2μm	±3μm	±2μm	±5μm	±5μm
R-axis Resolution	≤0.1°	≤0.1°	≤0.1°/ --	≤0.1°/ --	≤0.1°	--
Z-axis Resolution	1μm	1μm	10μm	10μm	--	--
Clamping Method	Both sides	Both sides	One side	One side	One side	One side
Reference Size	880mm(W) 720mm(D) 1880mm(H)		860mm(W) 680mm(D) 1825mm(H)		715mm(W) 650mm(D) 450mm(H)	
Power	Single-phase 110V,10A					

※Precision is estimated as  $\pm 2\sigma$  by measuring original standard gauge.

Universal Standard Vision Technology Corporation

No.10,Jingke E. Rd.,Nantun Dist.,Taichung City 408,Taiwan.

TEL:(+886)4-2359-8363 FAX:(+886)4-2359-8365

Web:www.usdvision.com

E-mail:service@usdvision.com

