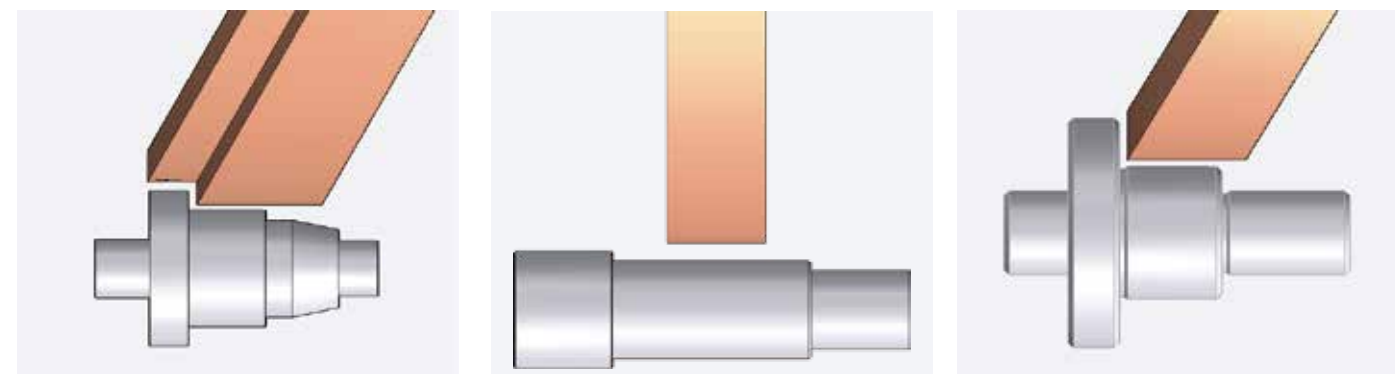


CNC Cylindrical Grinder Mini Genie - EGP-2520

EGP-2520 CNC • Printed in Taiwan • E2 • 08/2019 • en



Grinder Professionals

e-tech USA
6435 Alondra Blvd, Paramount,
CA.90723
E-mail : info@supertecusa.com
TEL : (562) 220-1675

e-tech Asian Operation Center
No.36, Ln.686, Sec.4, Changping Rd.,
Daya Dist., Taichung City 428
Taiwan(R.O.C)
E-mail : info@etecht.com
TEL : 886-425686418
WEB: www.etecht.com

1 EGP Series high Precision CNC Cylindrical Grinder

EGP Series grinders are designed for high precision, high efficiency, and ease of operation. They are suitable for various applications including but not limited to automatic, aerospace, medical instrument, tooling, job shop, and mold industries.

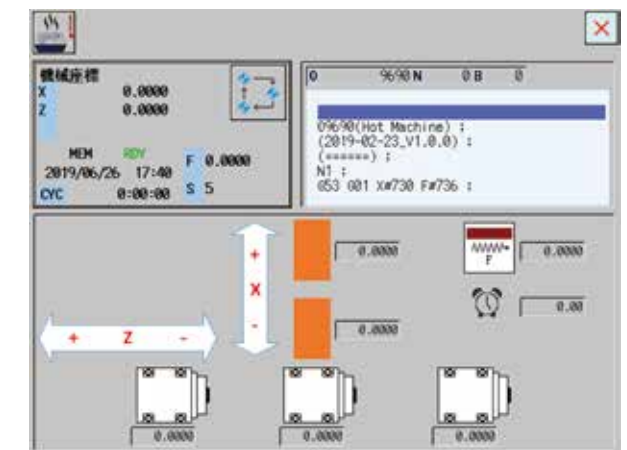
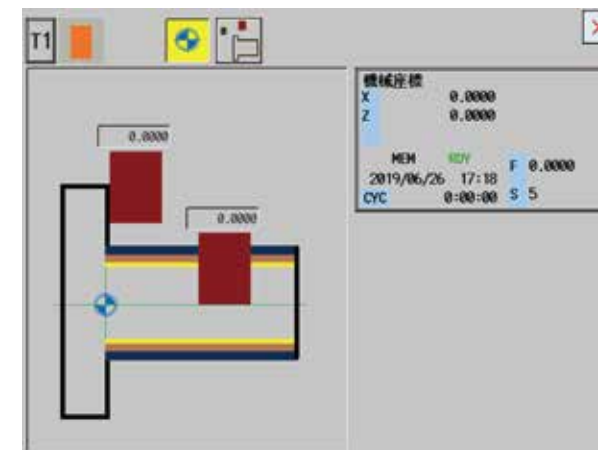
Features

- EGP2520CNC is a high-efficiency cylindrical grinding machine with ultimate reduction in footprint. With a floorspace requirement of less than 1.8 m² and 500mm diameter grinding wheel, it is suitable for small workpieces machining. Distance between center is designed to be 200mm, the center height is 125mm, and the maximum weight of workpiece can be processed is 5kg.



CNC Controller

- Etech Machinery continues its years of software development experience to install easy-learned I-Grind software in EGP-2520. It can grind various spare parts efficiently with the easy-setting software, and can be combined with multiple measurement systems or even automatic machining system.

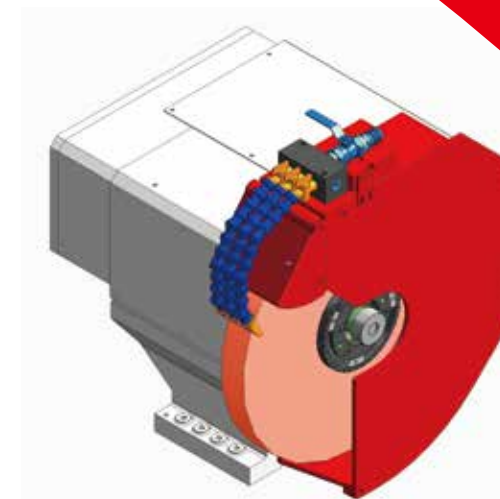
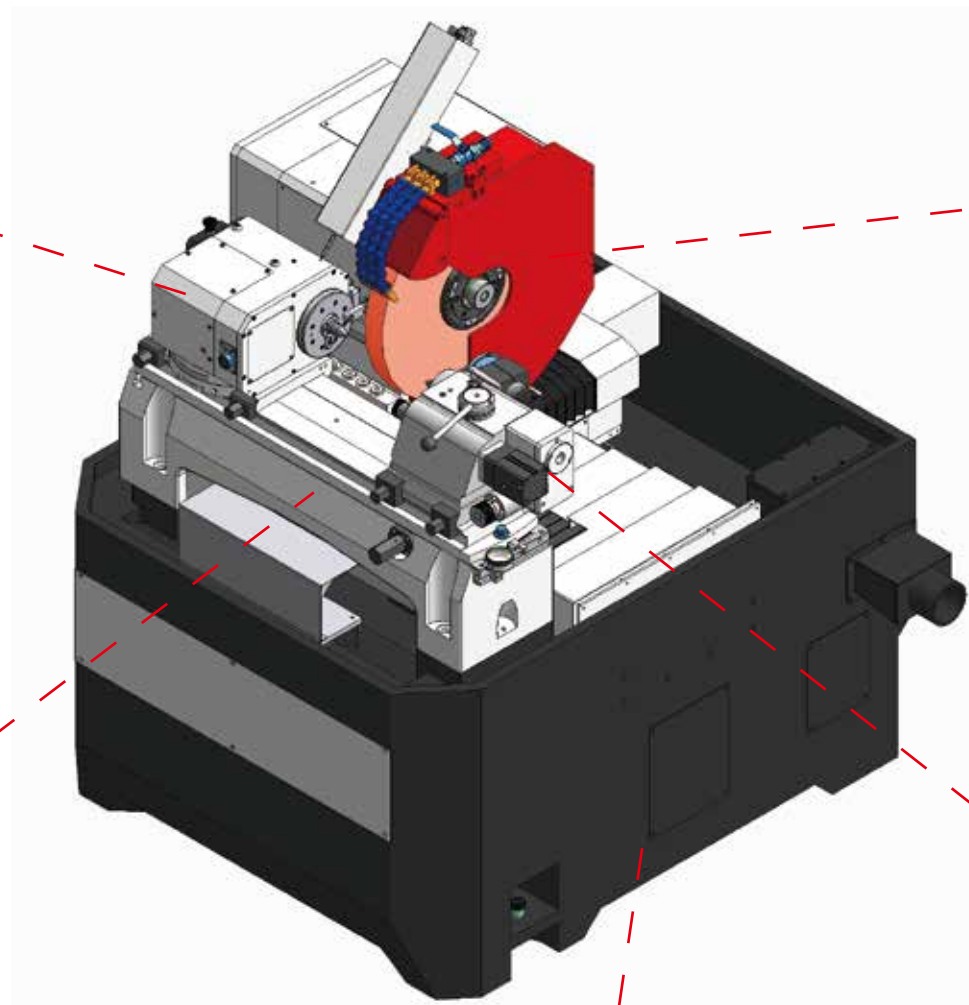


- OD Grinding / End Face Grinding / Form Grinding
- Form Dressing w/Auto compensation
- Multiple Section Grinding Sequences
- Setup Parameter Storage
- Graphic Parameter Instruction



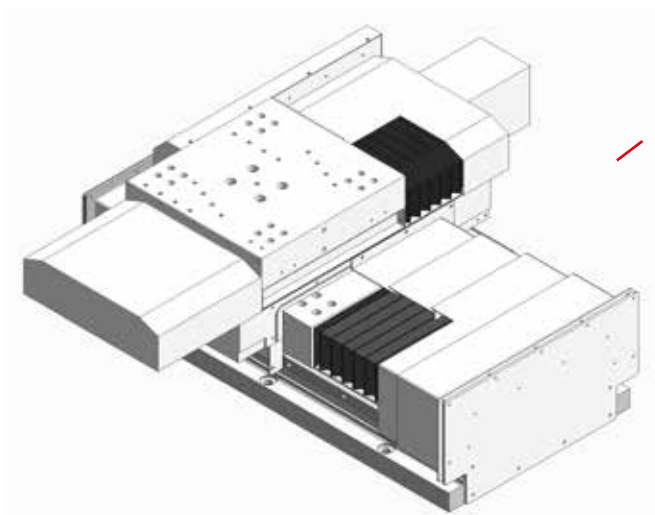
Work Head

NN bearing designed work spindle offers heavy duty load capacity, optimal rotation accuracy, and high rigidity. The servo motor drive offers steady speed and torque during the grinding operation. A positive air purge system keeps grinding swarf and coolant out of the work head, thus it prolongs its life.



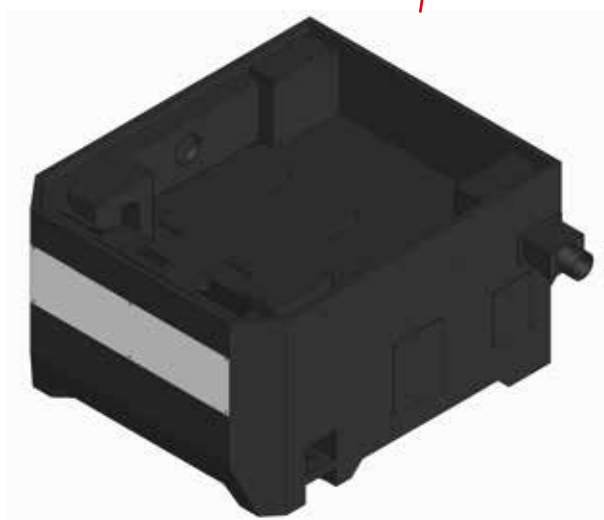
Wheel Head

NN bearing designed work spindle with high power motor provides enough power to outer diameter 510mm of wheel head, and improves processing efficiency. The angle of wheel head could be choose as 0 or 20 degree.



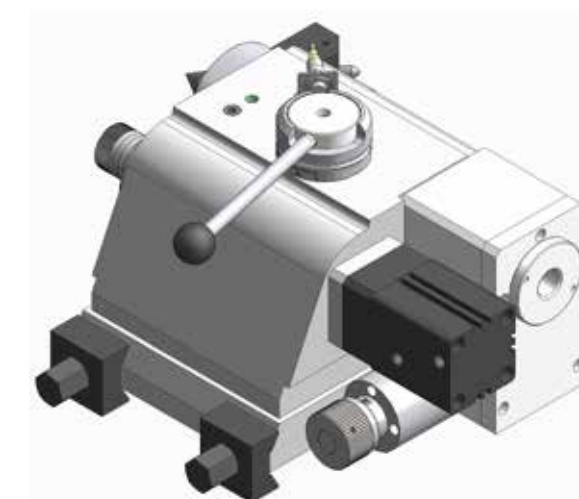
Cross Slides

The structure of cross slides is made of artificial granite. Its good thermostability compensates for temporary temperature changes. (Roller bearing and straight lead rail with Heidenhain linear scale)



Machine Base

Bath type of machine base is made in Meehanite cast iron, which experience natural aging and twice stress relief to make machine base itself more stable and durable.

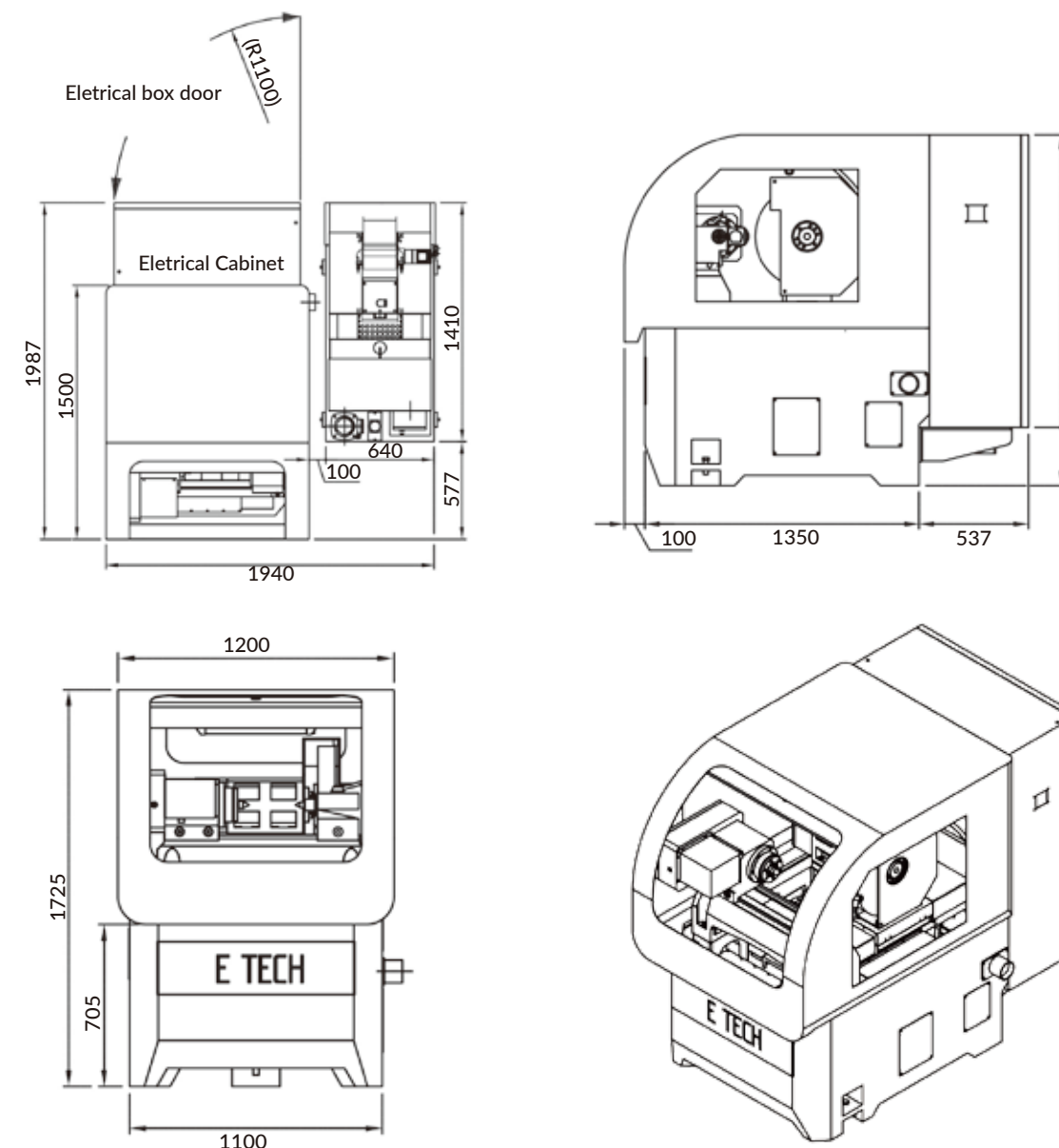


Tail Stock

Oil-bath tail stock remains lubrication and makes the machine more durable. Tailstock taper adjustment feature makes workpiece setting faster.

Model		EGP-2520	
Grinding Capacity	Swing over table	mm	φ250
	Distance between centers	mm	200
	Max. grinding diameter	mm	φ230
	Max. load held between center	kg	20
	Center distance between spindle and slide table	mm	130
Grinding Wheel	Diameter x Width x Bore	mm	φ510×50×φ152.4
	Motor rapid power / max. torque	Kw/Nm	5.5/27.6
	Wheel speed	rpm	1250 (Opt. 1650)
	Spindle type	-	bearing spindle
	Wheel head angle	deg	0 or 20
Work Head	Max. manual swiveling angle	deg	90
	Spindle speed (infinite variable)	rpm	10 ~ 600
	Motor rated power / max. torque	kw	0.75
	Center taper	-	MT3 (Opt. MT4)
	Center working	-	Fixed or Rotary
Tailstock	Diameter of bore	mm	φ20
	Tailstock quill travel	mm	25
	Center taper	-	MT3 (Opt. MT4)
X Axis	Micro-taper adjustment	mm	±0.04
	Travel	mm	200
	Max. rapid feedrate	m/min	6
	Heidenhain linear scale resolution	Um	0.05
	Min. increment	mm	0.0001
Z Axis	Servo motor rated power	Kw	1.2(F) / 1.5(M)
	Guide way	-	linear way
	Travel	mm	270
	Swiveling angle	deg	0
	Max. rapid feedrate	m/min	8
Motor	Min. increment	mm	0.0001
	Servo motor rated power	Kw	1.2(F) / 1.5(M)
	Guide way	-	linear way
Machine	Hydraulic pump	Kw	0.38
	Coolant pump	Kw	0.2
Machine	Net Weight	kg	2500
	Measurement	mm	1200 x 2000 x 1800

Measurement



Standard Accessories

- Infinite variable workhead w/servo motor
- Fanuc CNC Controller (0i TF) / (Opt. Mitsubishi M80)
- Carbide center tip (MT3/C10)
- Diamond Dresser and Stand
- Automatic wheel speed change (15 steps)
- X Axis Heidenhain linear scale (resolution 0.05 um)
- Levelling bolts and blocks
- Operation manual and part lists
- Grinding Wheel + Wheel Flange
- Full-enclosed splash guard
- Standard coolant tank 140L
- MPG handwheel 2 Axes control
- Auto lubrication system
- Roller type balancing stand/arbor
- LED working light
- Tools and Tool Box
- Electricity cabinet w/ heat exchanger
- Wheel Extractor
- 4-color indication signal light
- Electrical wiring diagram

Optional Accessories

- FANUC 0i-TF iGrind program
- Mitsubishi controller (M80) iGrind program
- Electrical cabinet air conditioner
- Workhead upgrade to MT4
- Tailstock upgrade to MT4
- Roller type balancing stand/ arbor
- CE standard electrical cabinet
- Automation with robot arm
- Touch probe
- Transformer
- Workpiece carrier
- Workpiece supporting seat, 2pc / set
- 2 Point Steady Rest
- 3-jaw scroll chuck
- BS VM25 Integration system (OD gauging+ crash & gap control + dynamic balance system)
- BS VM15 Integration system (OD gauging+ crash & gap control)
- Hydraulic tailstock (w/ foot pedal)
- Z Axis Heidenhain linear scale (resolution 0.05 um)
- Manual grinding wheel balance system (vibrator)
- Grinding wheel dynamic balance system
- Gap & crash control device
- Safety door lock
- Auto gauging device
- Coolant system with magnetic separator & paper filter
- Coolant system with magnetic separator
- Coolant system with paper filter
- Oil & mist collecting system
- Spare grinding wheel flange
- Full-Carbide center tip

* E-tech reserves the right to change specifications without notice