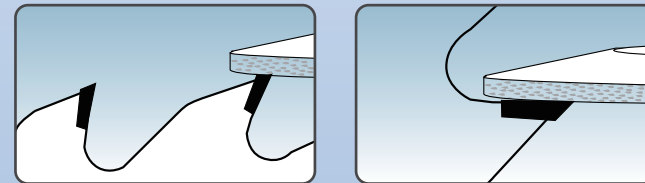


JF-286

CARBIDE TIP-TEETH SAW GRINDER



- Specially designed for grinding carbide saws easily and efficiently.
- High accuracy and easy set-up of center of the blade thickness.
- Parallelism of saw seat $\pm 0.005\text{mm}$ and with good durability.
- Both wheel guard and coolant tank are stainless steel.



JF-1600

(For super finish)

AUTOMATIC KNIFE GRINDER (Wheel moveable version)



- JF-1600 Grinding examples:
- Paper cutting knife
 - Single side cutting knife
 - Veneer cutting knife
 - Planer knife



JF-280

CARBIDE SAW GRINDER



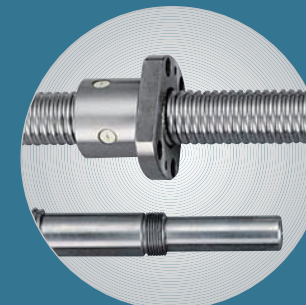
JF-280 Eccentric device system



JF-280 Work table with Linear bearing cross roller rail sets



JF-280 Index finger system



JF-1600 Grinding wheel back-front movement with ball screw sets

- Can obtain good, sharp knives by using a fine grinding wheel after a rough one.
- Force cooling system gets knives neither heated, transfigured nor annealed.
- Grinding wheel back-front movement with ball screw sets which obtain accurate and best result.
- With magnetic chuck parallelism $\pm 0.02\text{mm}$ and high accuracy.
- Equipped with variable speed motor for fine grinding wheel to grind high speed steel knives and carbide knives.
- Splash guard and coolant tank are stainless steel.